

LINNEA - 6 DRAWER DRESSER

URBAN OUTFITTERS

Assembly Instructions

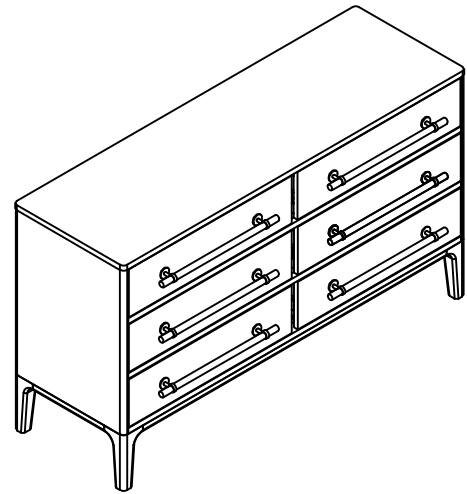
TOOLS REQUIRED BUT NOT INCLUDED:

Phillips head screw driver

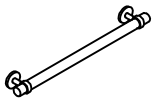
Do not throw away packing materials and carton until after assembly.
Assemble all parts on a clean smooth surface

CARE INSTRUCTIONS:

Avoid direct exposure to sunlight. Do not place over heat or Air conditioning vents.
Adjust levelers so that the furniture sits flat on uneven floors.
Blot spills do not rub, with a clean white cloth.
Do not use harsh chemicals.
Before cleaning any part test a small spot in a hidden area.
You may need to re-tighten all bolts after initial use.



PARTS INCLUDED

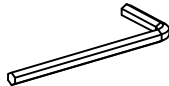


(A) Handle
Quantity: 6pcs

HARDWARE LIST



(1) Bolt
M6 x 25mm
Quantity: 12pcs



(2) Allen key
Quantity: 1pc

TIP KIT



(3) Anti-tip kits
Quantity: 2pcs



(4) Screw
M4 x 15mm
Quantity: 2pcs



(5) Screw
M4 x 25mm
Quantity: 2pcs



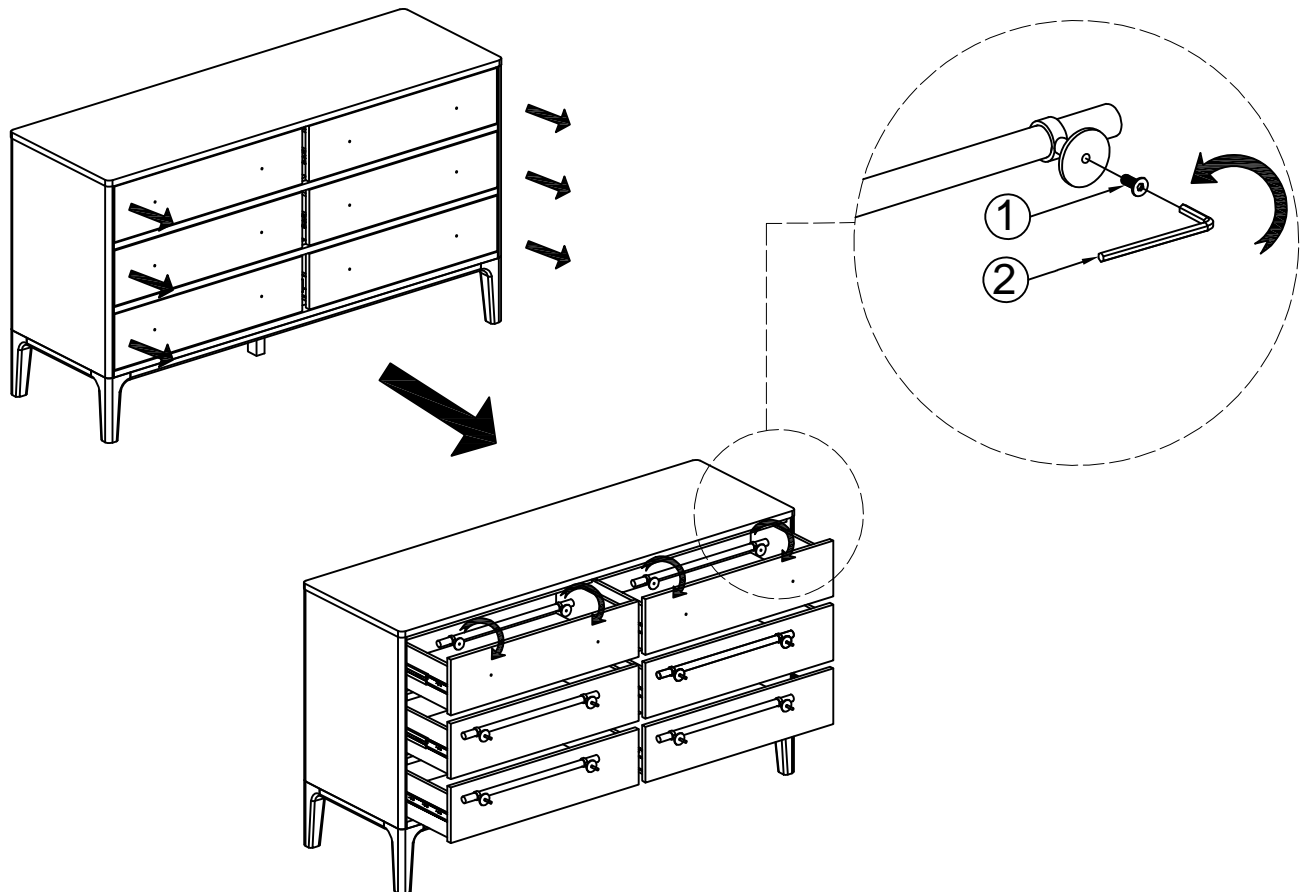
(6) Wall plugs
(2 is extra)
Quantity: 4pcs

LINNEA - 6 DRAWER DRESSER

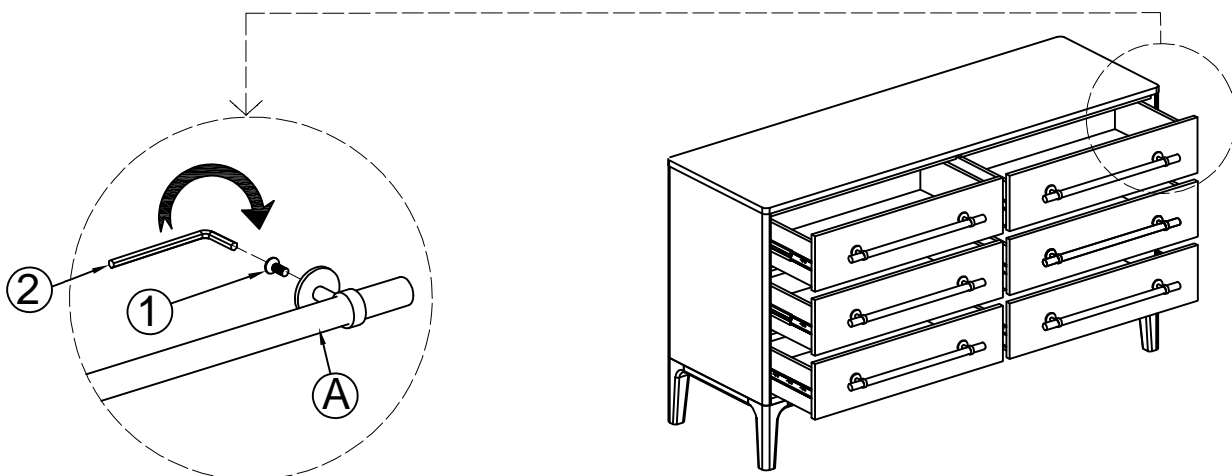
URBAN OUTFITTERS

Assembly Instructions

STEP 1. Pull the drawers out and locate the hardware inside. Unscrew handles inside drawers with allen key (2).



STEP 2. Align the handles (A) as shown. Insert the bolts (1) from the back and tighten with allen key (2).

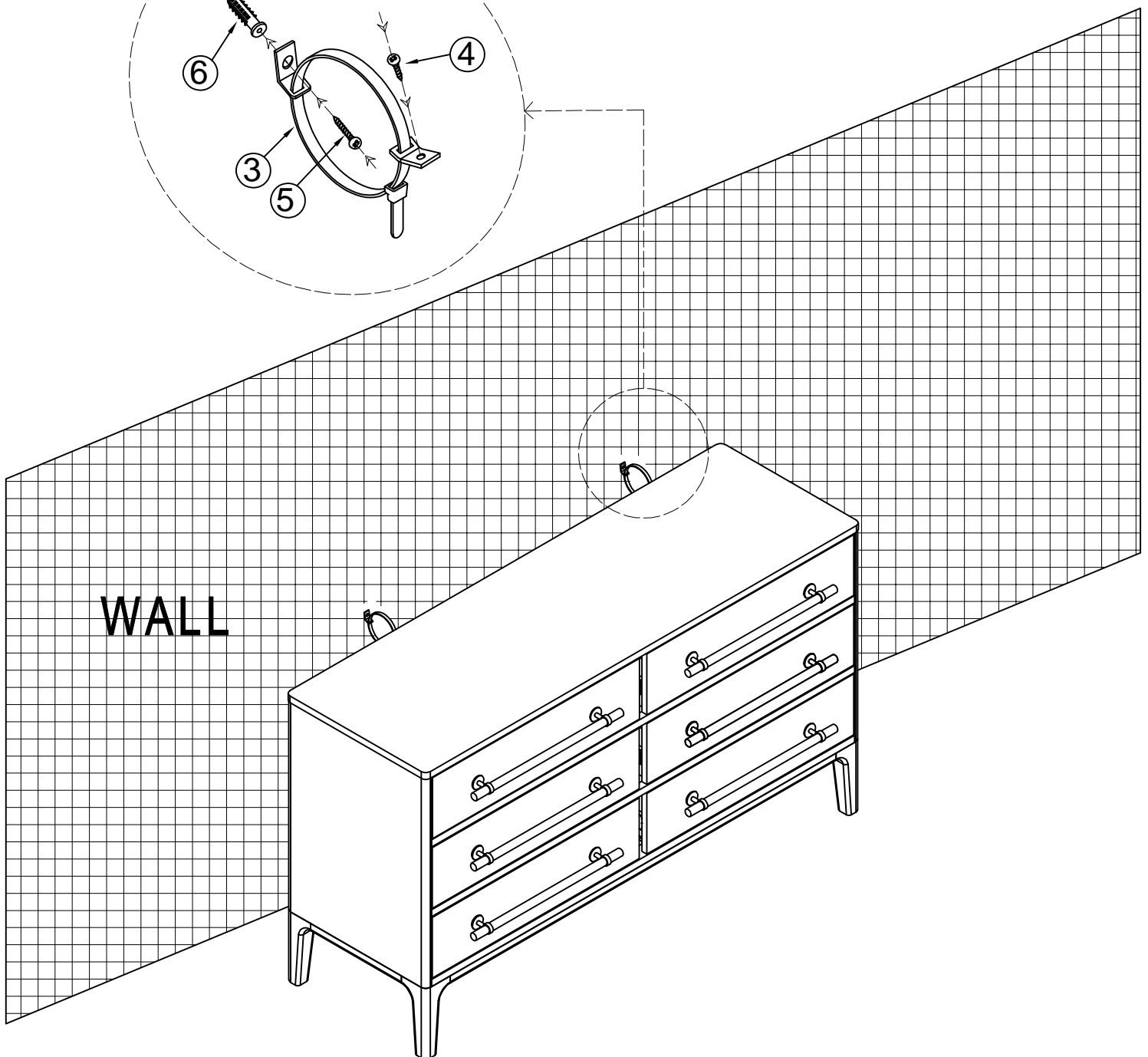
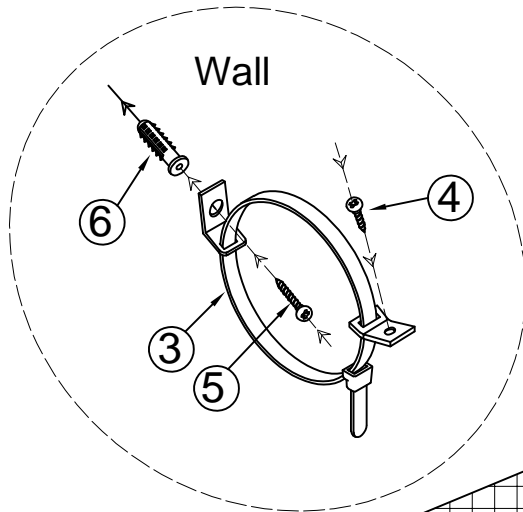


LINNEA - 6 DRAWER DRESSER

URBAN OUTFITTERS

Assembly Instructions

STEP 3. Align the anti tip brackets (3) to the top back of the case. Insert screws (4) and tighten completely. Do not over-tighten. Contact your local hardware store to purchase the correct anchors for your wall-type. Align the brackets to the wall and make sure they line up with the brackets on the back of the case. Screw the brackets to the wall using the correct anchors. Slide the case to the wall. Leaving a little bit of room between the case and the wall. Feed the Nylon Strap through both brackets and pull tight.



LINNEA - 6 DRAWER DRESSER

URBAN OUTFITTERS

Assembly Instructions

FINISH

