

COHEN FLUSH MOUNT

URBAN OUTFITTERS

Assembly Instructions

TOOLS REQUIRED BUT NOT INCLUDED:

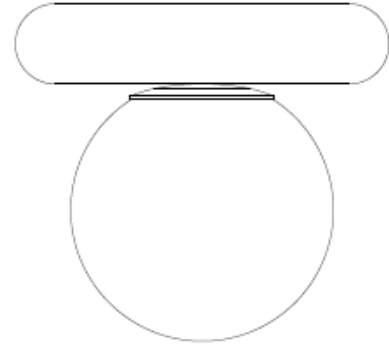
Phillips head screwdriver, Wire cutters

WARNINGS:

Do not throw away packing materials and carton until after assembly.
Assemble all parts on a clean smooth surface.
A licensed professional electrician should install direct wire fixtures.

CARE INSTRUCTIONS:

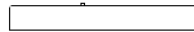
Avoid direct exposure to sunlight.
Do not place over heat or Air conditioning vents.
Blot spills do not rub, with a clean white cloth.
Do not use harsh chemicals.
Before cleaning any part test a small spot in a hidden area.
Use only a 6W (MAX) B type incandescent bulb or equivalent.
Do not use bulb that exceeds recommended wattage.



PARTS INCLUDED:



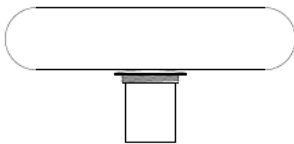
(A) Plastic Wire Nut Connector



(B) Mounting Plate



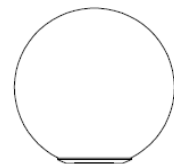
(C) Metal Mounting Screws
[8#-32T x 25mm] x2



(D) Lamp Body



(E) Metal Screws
[5/32-32T x 30mm] x2



(F) Glass Shade

COHEN FLUSH MOUNT

URBAN OUTFITTERS

Assembly Instructions

STEP 1

Insert the J-box wires through the center opening of the Mounting Plate (B). Attach the Mounting Plate (B) to the outlet box using the 2 J-Box Mounting Screws (C). Tighten each screw until the Mounting Plate (B) is firmly secured to the J-Box.

STEP 3

Carefully inspect the fixture's wires:

- Neutral fixture wire = white
- Hot fixture wire = black
- Ground wire = green
 - a) Wrap the ground wire of the junction box around the ground screw on the mounting plate and secure the screw
 - b) Attach the remaining ground wire from the junction box to the fixture ground wire with a wire nut, and wrap the connection with electrical tape
 - c) Attach the hot fixture wire from the pendant to the hot junction box wire.
 - d) Fasten each together with a wire nut and wrap the connection with electrical tape

DO NOT REVERSE THE HOT AND NEUTRAL CONNECTIONS OR SAFETY WILL BE COMPROMISED

STEP 4

Position the Lamp Body (D) under the Mounting Plate (B), aligning the holes on the Lamp Body (D) with the holes from the Mounting Plate (B). Insert the Metal Screws (E) and tighten to secure the Lamp Body (D) in place.

STEP 5

Insert the specified light bulb into the socket of Lamp Body (D). DO NOT EXCEED THE SPECIFIED WATTAGE.

STEP 6

Attach the Glass Shade (F) beneath the Lamp Holder and secure the Glass Shade (F) by rotating in a clockwise direction until tight.

STEP 7

Turn on switch, and enjoy your new lamp.

Use only a 6W (MAX) Type B LED bulb . Do not use bulb that exceeds recommended wattage.

