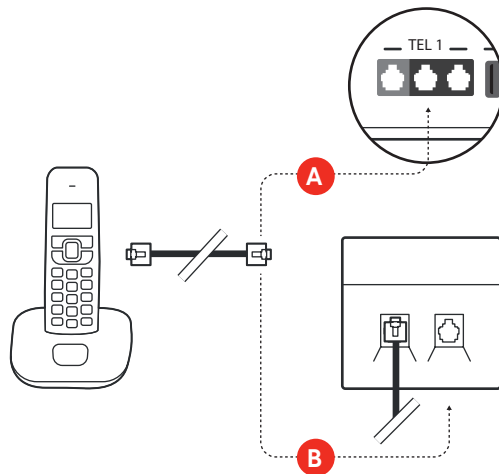


Connecting your phone



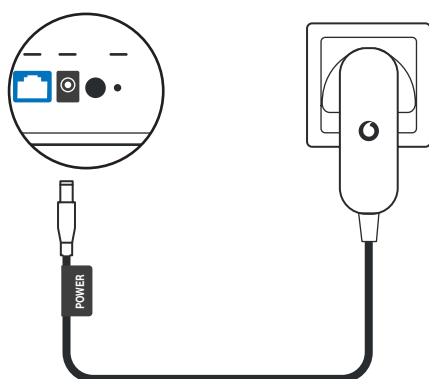
Plug one end of the phone cable into your telephone.

A If you have ordered a Broadband Voice service, plug the other end of the cable into the black telephone port on the back of the Vodafone Gigabox.

B If you have ordered a Landline Voice (PSTN) service, plug the other end of the cable directly into the phone socket on the wall.

Note:
You can confirm which voice service you have by checking your welcome letter or email.

Connecting the power cable

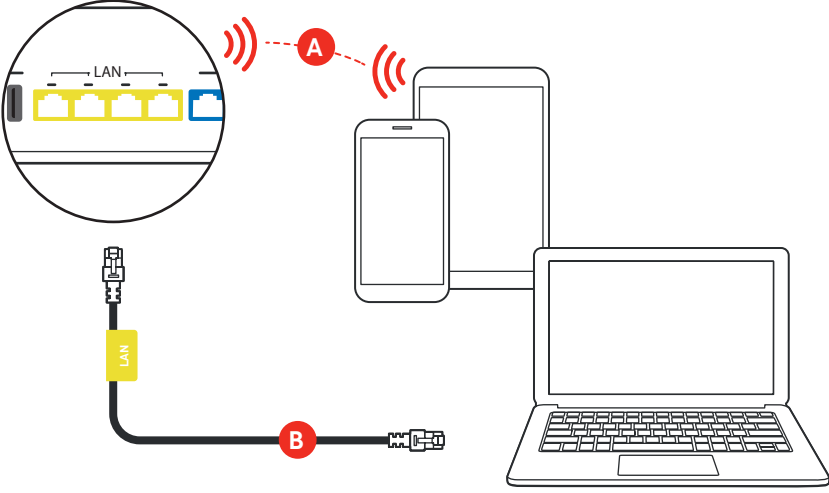


Plug the black labelled power cable into the power port on the back of the Gigabox and the power supply plug into the wall socket.

Press the power button on the Vodafone Gigabox.

Once you're connected to the internet the modem's internet light will turn from red to solid white.

Connecting devices to your network



A Wi-Fi: On your chosen device, search and connect to the Vodafone Wi-Fi network. The network name and password are on the bottom of the modem and look like this:

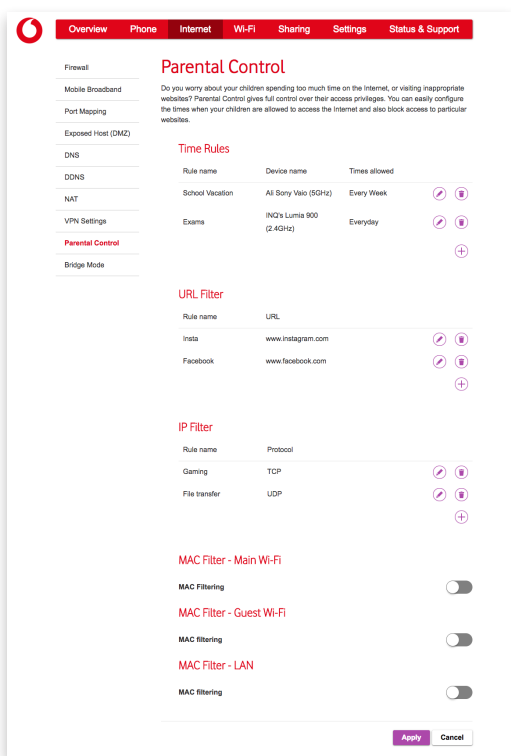


Tip:
For your convenience, you can find the Wi-Fi sticker in the Gift box and paste it inside this frame.

B Ethernet: Using the yellow labelled cable, plug one end into your device and the other end into one of the yellow Ethernet ports on the modem. You can connect up to four devices via Ethernet at the same time.

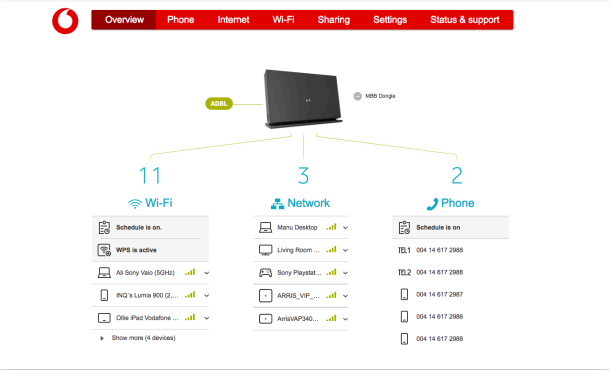
Vodafone Gigabox Online Portal

The Gigabox online portal allows you to set certain parental controls, which enable you to manage internet access by time, device and website.



To access the online portal please follow the below steps:

- 1 Open the internet browser on your device.
- 2 Enter the URL found on the label on the bottom of your Gigabox.
- 3 Enter the username and password also printed on the same label.



Vodafone recommends you change your Wi-Fi password once your modem has been set up. You can log into your Vodafone Gigabox online portal to change your password or this can also be changed from the modem app.

If you need help:
You'll find lots of helpful information at vodafone.ie/support

Or if you'd prefer, you can call us for free on **1907**.

Simple Setup Guide

Vodafone Gigabox

Your Vodafone Gigabox modem app



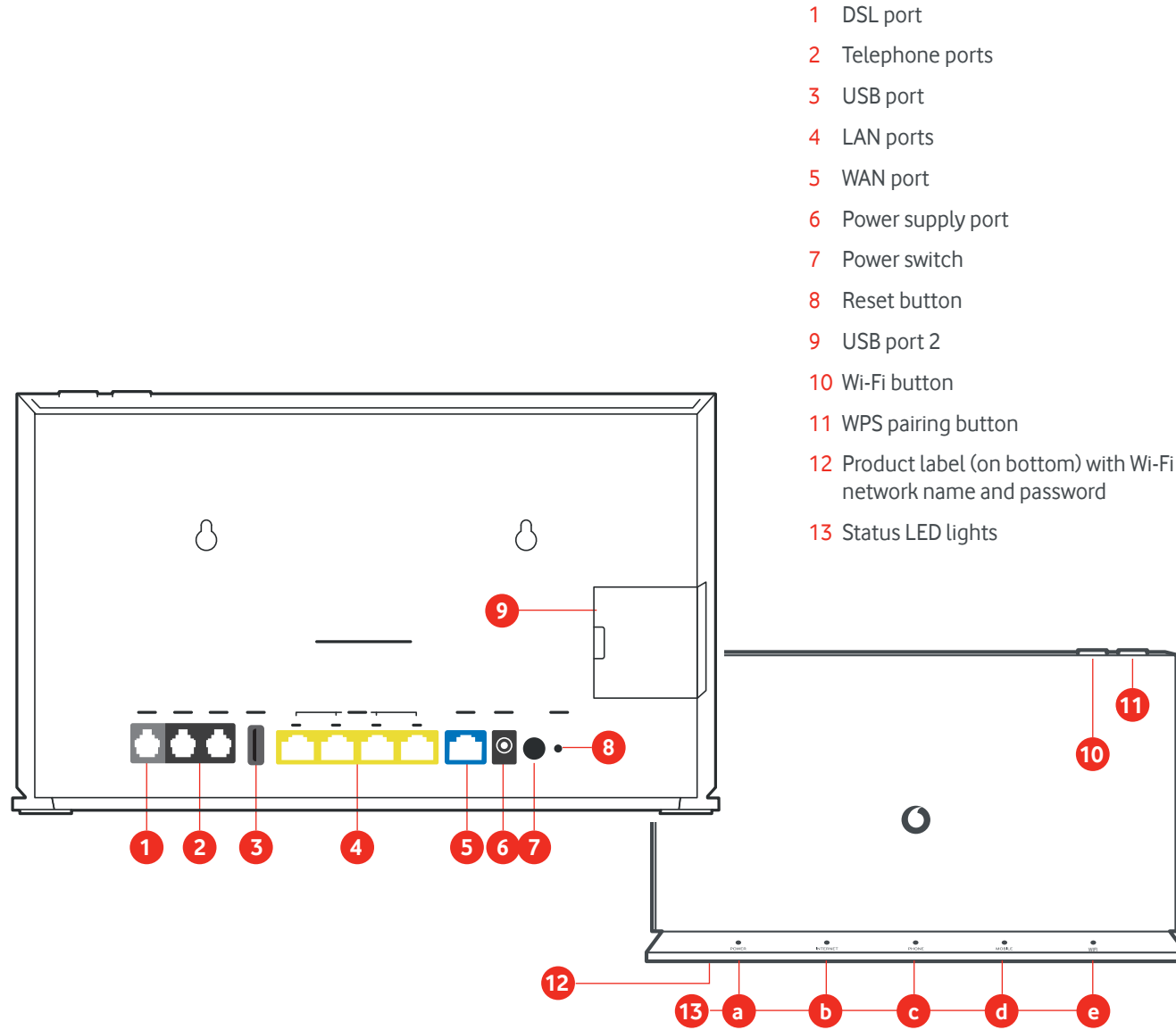
For easy to follow steps on setting up your Vodafone Gigabox simply download our dedicated modem app. The app allows you to:

- Turn your Wi-Fi on and off.
- Change the name of your Wi-Fi network.
- Easily search for and view the services connected to your Wi-Fi network and prioritise their access.

Search for the Vodafone Gigabox app in the Google or Apple store.



Your Gigabox explained



Valley Fold

Crease Fold

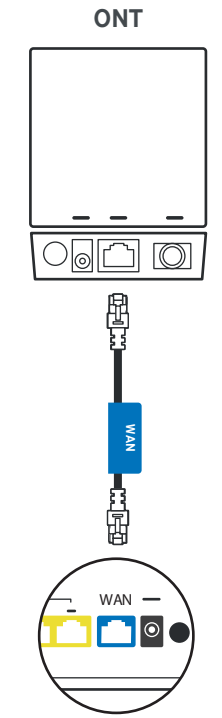
What do the LED lights and colours mean?

There are 5 status lights on the base of the modem.

Please note: It may take up to five minutes for your modem to connect to the internet when powered on for the first time. Please do not switch off your modem during this time.

- 13a: POWER**
 - White stable: Power is on
- 13b: INTERNET**
 - White blinking: Broadband connection is active
 - White stable: Successfully connected to the Internet
 - Red blinking fast: Connection error
- 13c: PHONE**
 - White stable: Broadband voice is working
 - White blinking slow: Call ongoing
 - Red stable: Broadband voice error
- 13d: MOBILE**
 - White stable: connected via 3G or 4G
- 13e: Wi-Fi**
 - White stable: Wi-Fi is on
 - White blinking slow: WPS (device) pairing in progress

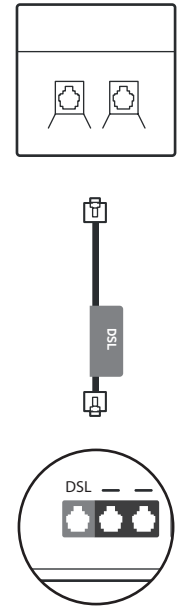
Connecting via Gigabit Broadband



Plug the blue labelled WAN cable into the LAN port on the bottom of the Gigabit ONT, plug the other end into the blue labelled WAN port on the back of the Vodafone Gigabox.

Valley Fold

Connecting via Simply Broadband



Plug the grey labelled DSL cable into the data port on the phone socket on the wall and plug the other end into the grey DSL port on the Vodafone Gigabox.

Crease Fold



© 2018 Vodafone Limited. All rights reserved to Vodafone or third party licensors and materials may not be used in any way or copied in whole or part without prior written permission of Vodafone Limited. Vodafone and the Vodafone logo are trademarks of Vodafone Group Plc or its associated companies.

Valley Fold