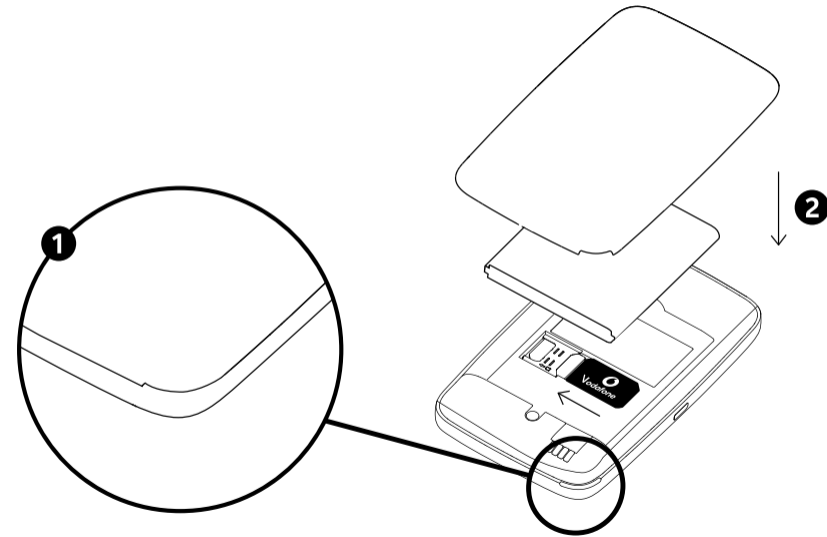
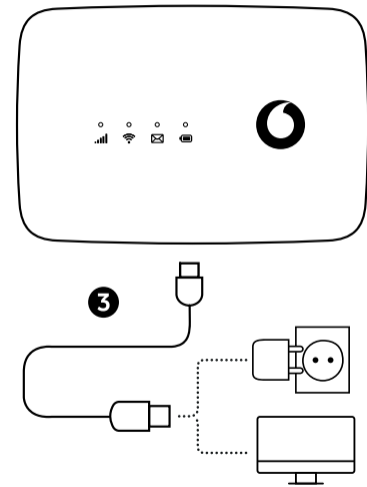


Open



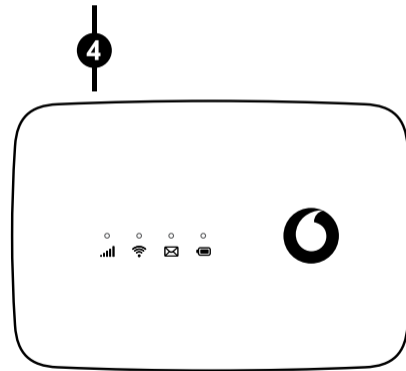
Insert battery

Charge

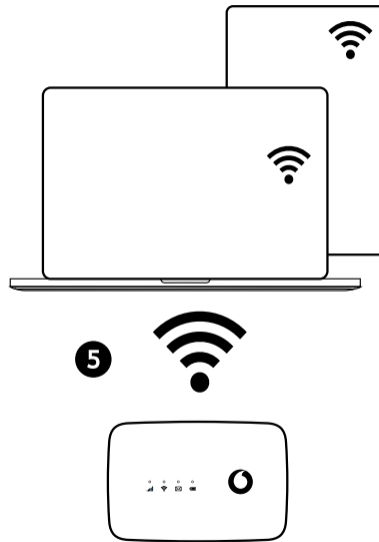


Start

Press and hold the power key



Connect



Choose Wi-Fi on your computer, smartphone or tablet settings, then select your Mobile Wi-Fi network name.

Enter the password to connect and open the web interface.

When you first connect to the network you may be asked to activate your SIM. If you're asked to unlock your SIM card, go to

<http://vodafonemobile.wifi> and enter the PIN for your SIM.

Turn over for more information about using your Vodafone Mobile WiFi.

Power-saving modes

After **30 seconds** without a button being pressed, all the LED lights will turn off. Press any button to turn them on again.

After **10 minutes** without the Wi-Fi being used, the mobile network connection will turn off. When you press any key or when a device accesses the Wi-Fi, the network will be connected again automatically.

After **30 minutes** without the Wi-Fi being used, the Wi-Fi network will turn off. Press any button to turn the Wi-Fi network back on.

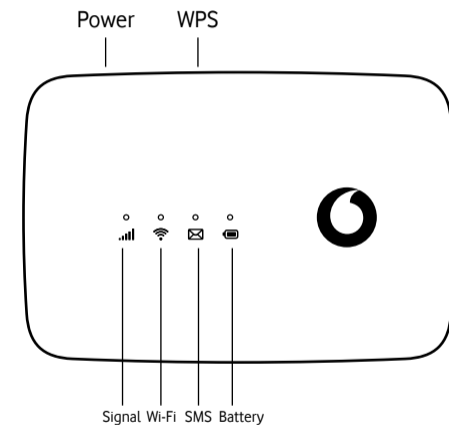
Using the web interface at vodafonemobile.wifi

You can find the web interface on **vodafonemobile.wifi** if it doesn't appear automatically when you connect. Then login using the password **admin**

Then you can see your network and Wi-Fi status, how much data you have used, get help and support, and even send and receive SMS messages from your computer.



Buttons and LED



What the lights mean

Signal

- Blue steady - Connected to 4G network
- Blue blinking - Connected to 3G network
- Purple steady - Connected to 2G network
- Red steady - Registered to the network, but not connected (no internet)
- Red blinking - No connection. This could be because the SIM card is not inserted correctly, or because there is no network signal.

Wi-Fi

Blue steady - Wi-Fi active

SMS

- Blue steady - New SMS
- Blue slow blinking - SMS Inbox full
- Blue fast blinking - Device update available at vodafonemobile.wifi
- No light - No SMS

Battery

- Blue steady - Fully charged
- Blue blinking - Charging
- Red steady - Battery low
- No light - Standby/not charging

The buttons

Power button

Press and hold for 3 seconds to turn the device on/off.

Short press to put the LED in either active or sleep mode.

Press and hold for 10 seconds to reboot the device.

WPS button

Press and hold for 3 seconds to turn on WPS.

Reset

Press both Power and WPS buttons at the same time for 13 seconds to reset the device to factory mode.

Vodafone 4G Mobile Hotspot

Model R219t

Quick Start Guide

