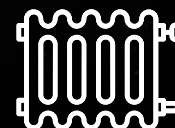


FloPlast



**Hot & Cold
Plumbing Systems**





FloFit+

The all-new flexible push-fit hot and cold plumbing system.

FloFit+ is a flexible and fully demountable push-fit plumbing system suitable for all domestic and small commercial hot & cold water installations, including central heating systems for both pressurised (unvented) and combi (vented) systems. FloFit+ enables the installer to undertake a faster, easier and more cost effective installation.

Independent testing confirms time savings of up to 40% compared with traditional plumbing materials. Therefore, FloFit+ offers a faster, easier and more cost effective installation.



System Benefits

FloFit+ has a wide range of fittings in 10mm, 15mm, 22mm and 28mm sizes, which are both WRAS approved for use with plastic and/or copper pipe, and Kitemarked to BS 7291 Parts 1, 2 & 3.



50 Year Guarantee

An unrivalled 50-year product guarantee is offered on all FloFit+ fittings and pipe.



BSI Accreditation

FloFit+ fittings are Kitemarked to BS 7291 Parts 1, 2 & 3, including 'Class S' (KM602628).



WRAS Approved

Fully WRAS certified under approval number 2009549.



Made In The UK

All FloFit+ fittings are manufactured at FloPlast's UK production facility in Kent.



Lightweight Design

Easy to handle and work with whilst remaining incredibly strong and durable.



Superior White Finish

FloFit+ fittings and pipe are produced with a maintenance free white finish.

**FloFit+ fittings
are available
with coloured
collet clips
for easy
identification.**



FloFit+ Fittings

Elbow



Size	Code
10mm	FB10
15mm	FB15
22mm	FB22
28mm	FB28

Tee



Size	Code
10mm	FT10
15mm	FT15
22mm	FT22
28mm	FT28

Coupling



Size	Code
10mm	FC10
15mm	FC15
22mm	FC22
28mm	FC28

Stop End



Size	Code
10mm	FE10
15mm	FE15
22mm	FE22
28mm	FE28

Pipe Insert



Size	Code
10mm	FXI10
15mm	FXI15
22mm	FXI22
28mm	FXI28

Reducing Coupling



Size	Code
15 x 10mm	FRC15
22 x 15mm	FRC22

Reducing Tee 15x10x10



Size	Code
15mm	FRT151010

Reducing Tee 15x15x10



Size	Code
15mm	FRT151510

Reducing Tee 15x15x22



Size	Code
15mm	FRT151522

Reducing Tee 22x15x15



Size	Code
22mm	FRT221515

FloFit+ Fittings

Reducing Tee 22x22x10



Size	Code
22mm	FRT222210

Reducing Tee 28x22x28



Size	Code
28mm	FRT282228

Bent Tap Connector



Size	Code
15mm	FBC1512

Reducing Tee 22x22x15



Size	Code
22mm	FRT222215

Reducing Tee 28x28x15



Size	Code
28mm	FRT282815

Tap Connector 15mm x 1/2"



Size	Code
15mm	FTC1512

Reducing Tee 22x22x28



Size	Code
22mm	FRT222228

Reducing Tee 28x28x22



Size	Code
28mm	FRT282822

Tap Connector 15mm x 3/4"



Size	Code
15mm	FTC1534

Reducing Tee 28x22x22



Size	Code
28mm	FRT282222

Reducing Tee 22x15x22



Size	Code
22mm	FRT221522

Tap Connector 22mm x 3/4"



Size	Code
22mm	FTC2234

FloFit+ Fittings

Stem Elbow



Size	Code
10mm	FS10
15mm	FS15
22mm	FS22

NOTE: A Pipe Insert is required when using a Stem Elbow or Stem Reducer.

Stem Reducer



Size	Code
10 x 15mm	FSR1015
15 x 22mm	FSR1522
15 x 28mm	FSR1528
22 x 28mm	FSR2228

NOTE: A Pipe Insert is required when using a Stem Elbow or Stem Reducer.

Manifold 4 Port



Size	Code
22x15mm	FM22415

Manifold 2 Port



Size	Code
22x15mm	FM22215

Flexi Hose



Size	Code
15mm x 1/2" x 300mm	FH10
15mm x 3/4" x 300mm	FH12
15 x 15 x 300mm	FH15
22mm x 3/4" x 300mm	FH20
22 x 22 x 300mm	FH22

Chrome ISO Valve



Size	Code
15 x 15mm	FV15

Collet Clip - Red Hot Water

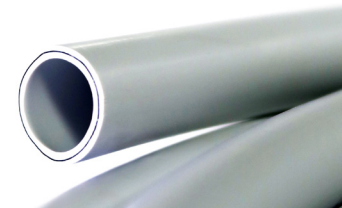


Size	Code
10mm	FCR10
15mm	FCR15
22mm	FCR22
28mm	FCR28

Collet Clip - Blue Cold Water



Size	Code
10mm	FCB10
15mm	FCB15
22mm	FCB22
28mm	FCB28



View more product
information & imagery:
www.floplast.co.uk



FloFit+ Pipe

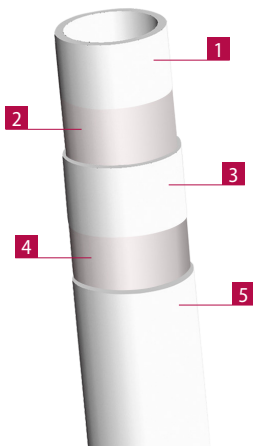
FloFit+ compatible pipe is available in either Polybutylene (PB) or PEX and benefits from full BS7291-Class S and WRAS approvals. This provides specifiers and installers full confidence in the quality and reliability of the range. Like the FloFit+ fittings, the pipe also benefits from an unbeatable **50 year guarantee**.

All pipe has been approved for hot and cold water distribution systems, underfloor heating systems and central/plumbing heating systems.

Easy-Lay Pipe is more flexible than other pipes allowing you to manoeuvre the pipe into awkward spaces with complete ease. It's quick and easy to uncoil and the flexible material makes cabling through joists a simple task.

PEX Pipe is tough, dependable and flexible, and remains amazingly reliable & incredibly efficient.

Regardless of material, it is critical that pipe inserts are used when installing the range, shown on page 6.



Easy-Lay PB Pipe

Size	Code
10mm x 25m Coil	123401
10mm x 50m Coil	123402
10mm x 100m Coil	123403
15mm x 3m Length	124400
15mm x 25m Coil	124401
15mm x 50m Coil	124402
15mm x 100m Coil	124403
22mm x 3m Length	125400
22mm x 25m Coil	125401
22mm x 50m Coil	125402
28mm x 25m Coil	126401
28mm x 50m Coil	126402

PEX Barrier Pipe

Size	Code
15mm x 3m Length	121400
22mm x 3m Length	122400
28mm x 3m Length	122413

Pipe Layering Information

- 1 PB/PEX inner pipe layer.
- 2 An adhesive layer bonding the inner pipe layer to the oxygen barrier.
- 3 Ethylene vinyl alcohol copolymer (EVOH) oxygen barrier layer.
- 4 An adhesive layer bonding the outer pipe layer to the oxygen barrier.
- 5 PB/PEX outer pipe layer.

Store Display

To help with promoting this range, FloPlast offer a self contained unit with shelving and dividers.

Contact your ASM for more details.

FloFit+ FSDU



Size	Code
710 x 1770 x 540mm	908018

Assembly

Figure 1

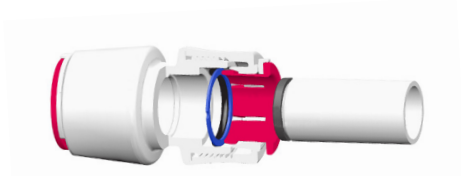


Figure 2

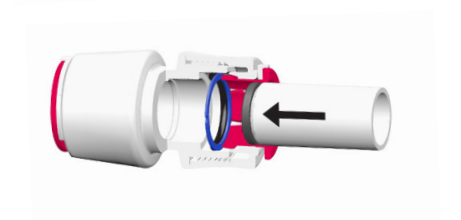


Figure 3

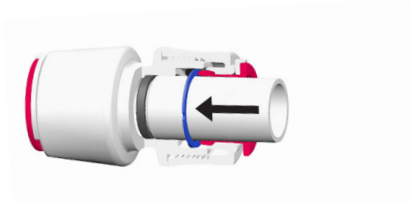
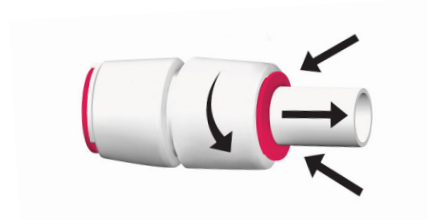


Figure 4



- 1 When making a joint with FloFit+, ensure that the pipe has been cut square and is free from burrs, scratches and sharp edges.
FloPlast recommend that all pipes are cut with pipe cutters and not hacksaws.
Do not use damaged or scratched pipes as this could cause a leak.
- 2 Before assembling the joint, ensure that the appropriate pipe insert has been inserted into the pipe. (Figure 1)
All joints with either FloFit+ fitting or compression fittings must include the correct pipe insert.
- 3 Mark the pipe to the required insert depth (see table) including the correct insert.
Push the pipe into the fitting to the stop point, the insert depth line (previously marked) should not be visible. (Figure 2 & 3).
Check the assembly to ensure that the pipe is fully locked by pulling the pipe away from the fitting.

Pipe Size	Insertion Depth
10mm	23mm
15mm	30mm
22mm	37mm
28mm	45mm

Copper Pipe Only – Before installing the pipe, remove the collet clip and then ensure that the collet is pushed into the body of the fitting. Install the pipe ensuring that it is fully inserted into the fitting. Pull the collet out and secure the joint sufficiently to enable the collet clip to be re-fitted. This ensures that the joint is locked.

Not to be used with Plated Copper Pipe.

- 4 To dismantle FloFit+ fittings, remove the collet clip, loosen the cap, pull the pipe back slightly and push the collet face towards the body of the fitting, then pull the pipe out of the socket. (Figure 4)
No tools are required to dismantle FloFit+ fittings.

Support



Technical Brochure

Full product and technical information alongside operating parameters and application guidance.



Installation Guide

Simple to understand installation guide for all applications including copper pipe and brass compression fittings.



FloPlast Website

Consumer friendly website with installation videos, additional imagery and FAQ's.





FloPlast

 **FloPlast Ltd**
Eurolink Business Park
Castle Road
Sittingbourne
Kent
ME10 3FP
United Kingdom

 +44 (0) 1795 431731

 +44 (0) 1795 431188

 sales@floplast.co.uk

 www.floplast.co.uk

