

MEET ALBERT WITHOUT COCOA FARMERS LIKE HIM, THERE IS NO CHOCOLATE



Together We Grow

Mondelez
International

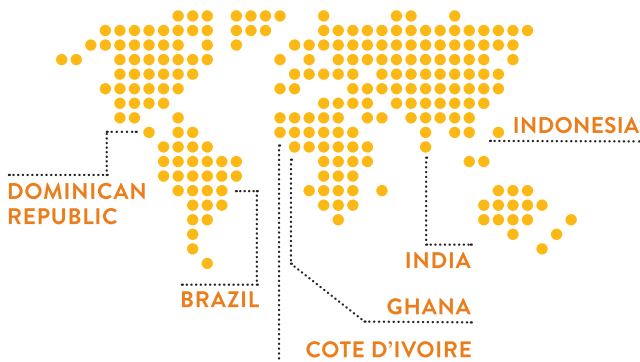


Without successful farmers and thriving cocoa-growing communities we cannot bring consumers the chocolate they love.



COCOA LIFE STANDS FOR POSITIVE LASTING CHANGE FOR COCOA COMMUNITIES

Launched in 2012, Cocoa Life will invest \$400 million to ensure a sustainable future for chocolate, reaching 200,000 cocoa farmers and 1 million community members by 2022 in Ghana, Côte d'Ivoire, Indonesia, India, the Dominican Republic, and Brazil.



WHY COCOA LIFE?



Empowered, thriving Cocoa Life farmers and their communities are the foundation of sustainable cocoa.



Partnerships between Cocoa Life farmers, communities and NGOs are key to finding real solutions and measurable change.



Cocoa Life is independently verified and sources Cocoa Life beans from farmer organizations, as part of our commitment to lasting positive change for cocoa communities.

OUR APPROACH

Cocoa Life is built on the vision that empowered thriving cocoa farming communities are the essential foundation for sustainable cocoa farming. Cocoa Life holds at its **core 3 non-negotiable principles**.

1. HOLISTIC AND FARMER-CENTRIC

Listening to farmers and their communities allows us to design interventions that lift people out of poverty and establish cocoa communities as desirable places to live.

2. COMMITTED TO PARTNERSHIPS

Joining together with farmer organizations, governments, NGOs, supply chain partners and communities helps us find real solutions that can lead to measurable transformations.

3. ALIGNED WITH OUR SOURCING

Striving to ensure all our partners, along all of our cocoa supply chains, support our approach and principles of integrity and accountability. By sourcing Cocoa Life beans from the farmer organizations, Cocoa Life farmers become active members of the supply chain.



IMPLEMENTING PARTNERS

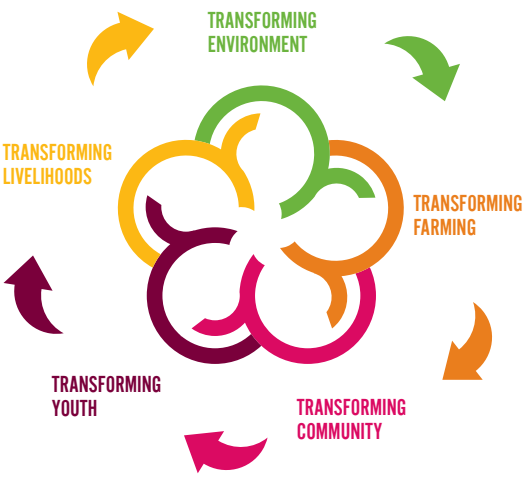
On the ground, Cocoa Life partners with NGOs like CARE International, World Vision, Voluntary Services Overseas (VSO), Solidaridad, Swisscontact and Save the Children among others, who have a long experience of working with cocoa communities to assess their needs and devise the action plans against which Mondelez International invests through Cocoa Life.

Cocoa Life also works closely with cocoa suppliers who have valuable on-the-ground expertise and existing relationships with farmer communities.

EXTERNAL ADVISORS

- **Aidan McQuade** from Anti-Slavery International – the world's leading anti-slavery charity.
- **Mil Niepold** – expert in finding solutions to social and human rights issues through dialogue.
- **Andrew Bovarnick** from the United Nations Development Programme – leader of UNDP's green commodities program.
- **David McLaughlin** from WWF – VP agriculture and specialist in sustainable supply chain transformation.
- **Jane Nyambura** from the Ethical Tea Partnership – expert on improving smallholders' livelihoods.

OUR FOCUS AREAS



Farming
Facilitating the adoption of improved agricultural practices
Providing access to improved planting materials, crop protection and financial services



Community
Empowering communities to lead their own development, with the help of the Community Action Plan



Youth
Encouraging quality education
Making cocoa farming a more attractive profession for young people



Livelihoods
Improving access to financial services
Promoting entrepreneurship and additional income



Environment
Maintaining cocoa ecosystems
Protecting the landscape

CROSS-CUTTING THEMES

Cocoa life has embedded women’s empowerment and the elimination of child labor as cross-cutting themes to support each of these five areas.

We believe our holistic approach centered on cocoa communities helps to address the root causes of child labor, like poverty and lack of community development.

We believe women are a catalyst for change and amplify the impact of our program. Increasing women’s involvement leads to improved financial management by farmers, better education of youth and more sustainable, thriving communities.



“ We receive training in good agricultural practices so our trees are stronger, we can grow more cocoa and make more money.”



“ We’re planting shade trees and learning how that helps reduce the impact of climate change.”



“ I’m working in the community nursery and I hope to be a cocoa farmer someday.”



“ I have a leadership role in developing our community’s action plan.”



“ I borrowed money from my savings group and turned my sewing skills into a business as a seamstress in my village.”

EVALUATION, LEARNING AND VERIFICATION

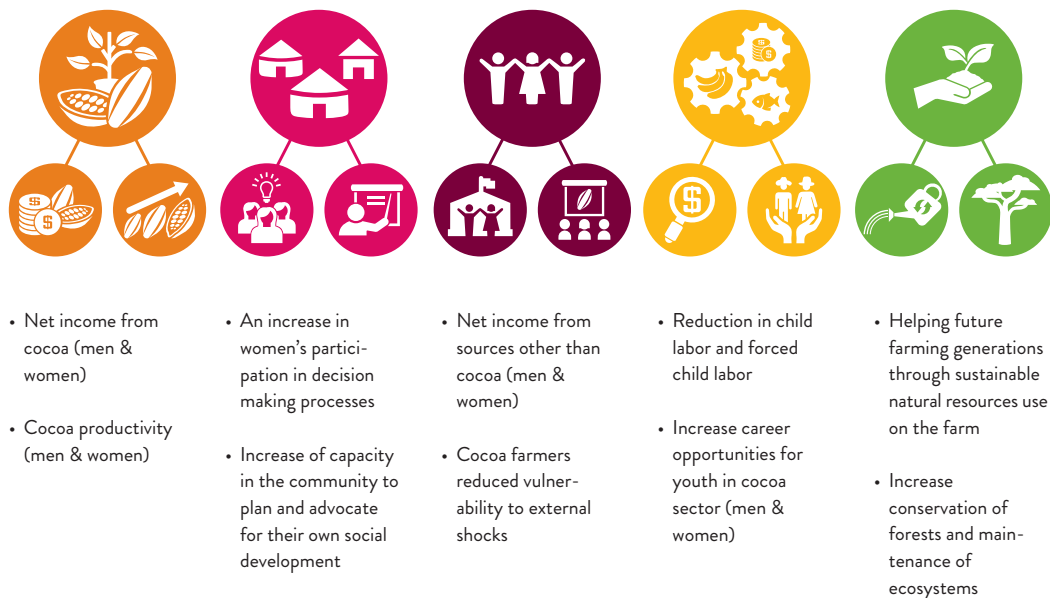
Cocoa Life is an industry leading, independently verified program.

To understand the impact and continuously improve the quality of our interventions on the ground, we commission annual outcome assessments and three-yearly evaluations of our impact on cocoa farming communities by IPSOS, an independent research agency on ten key performance indicators (KPIs), as shown in the chart below.

In Ghana, a Harvard impact survey has shown that farmer income has tripled since 2009 which is 49% more than the control communities. Cocoa yield has increased with 37% more than the control communities.

Further, as part of this independent verification process, FLOCERT is on an ongoing basis verifying the flow of cocoa from Cocoa Life communities into Mondelez International's supply chain and the benefits received by farmers.

MEASURING & EVALUATING OUR KPIS



OUR PROGRESS

By the end of 2016 we have worked with 92,000 farmers in 861 communities.

Our aim is to build on all these results and reach 200,000 farmers and impact 1 million members of cocoa farming communities by 2020.

To follow our progress visit www.cocoalife.org