

Key:

— Bold Line: Cut

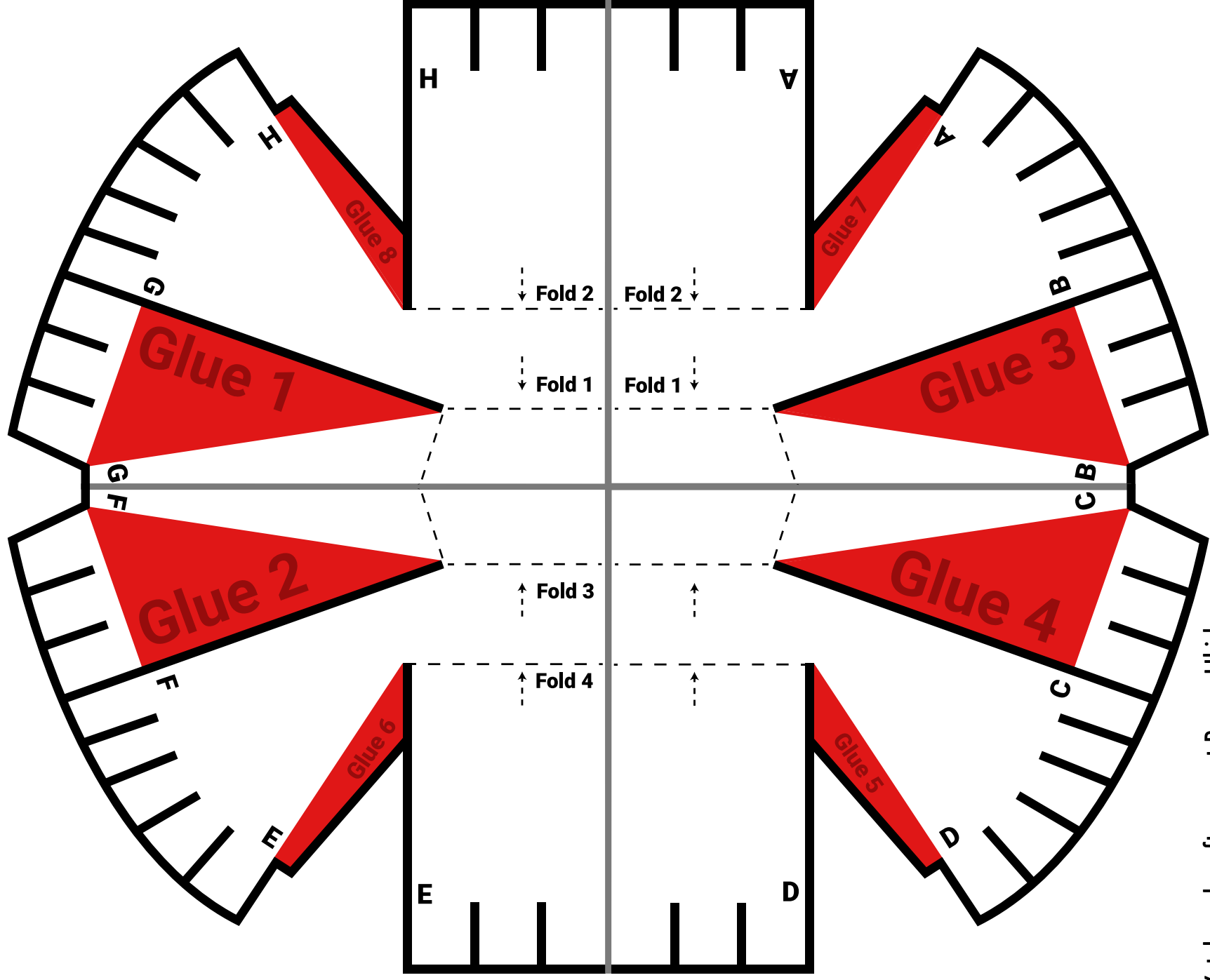
- - Dash Line: Fold

— Red Filled Areas: Glue

— Dark Gray Line: Cut (for middle)

Reference Sheet

Once you've printed all four quadrants, glue together as seen below to create a single large pattern.



Key:

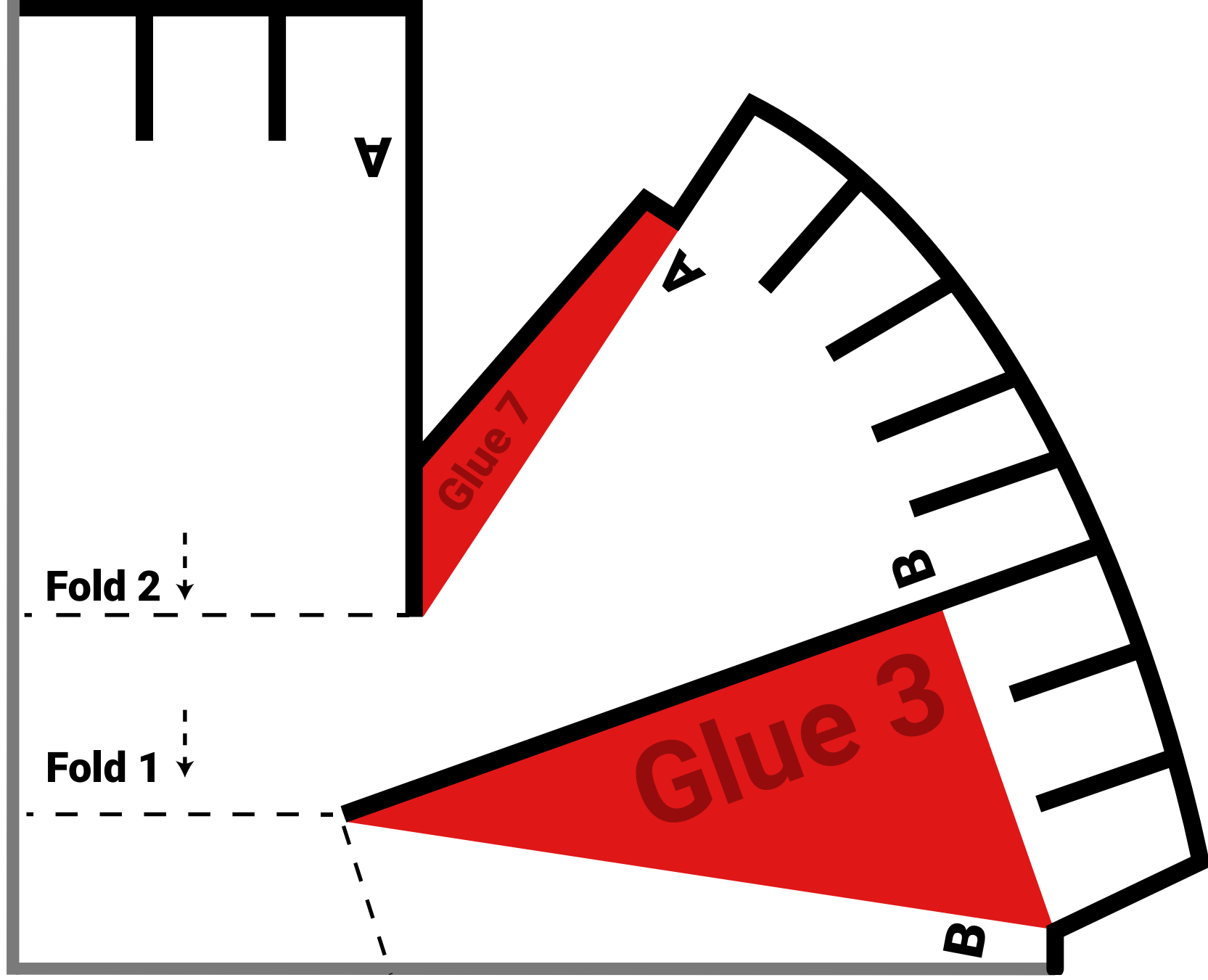
— Bold Line: Cut

- - - Dash Line: Fold

— Red Filled Areas: Glue

— Dark Gray Line: Cut (for middle)

Sides A and B



Key:

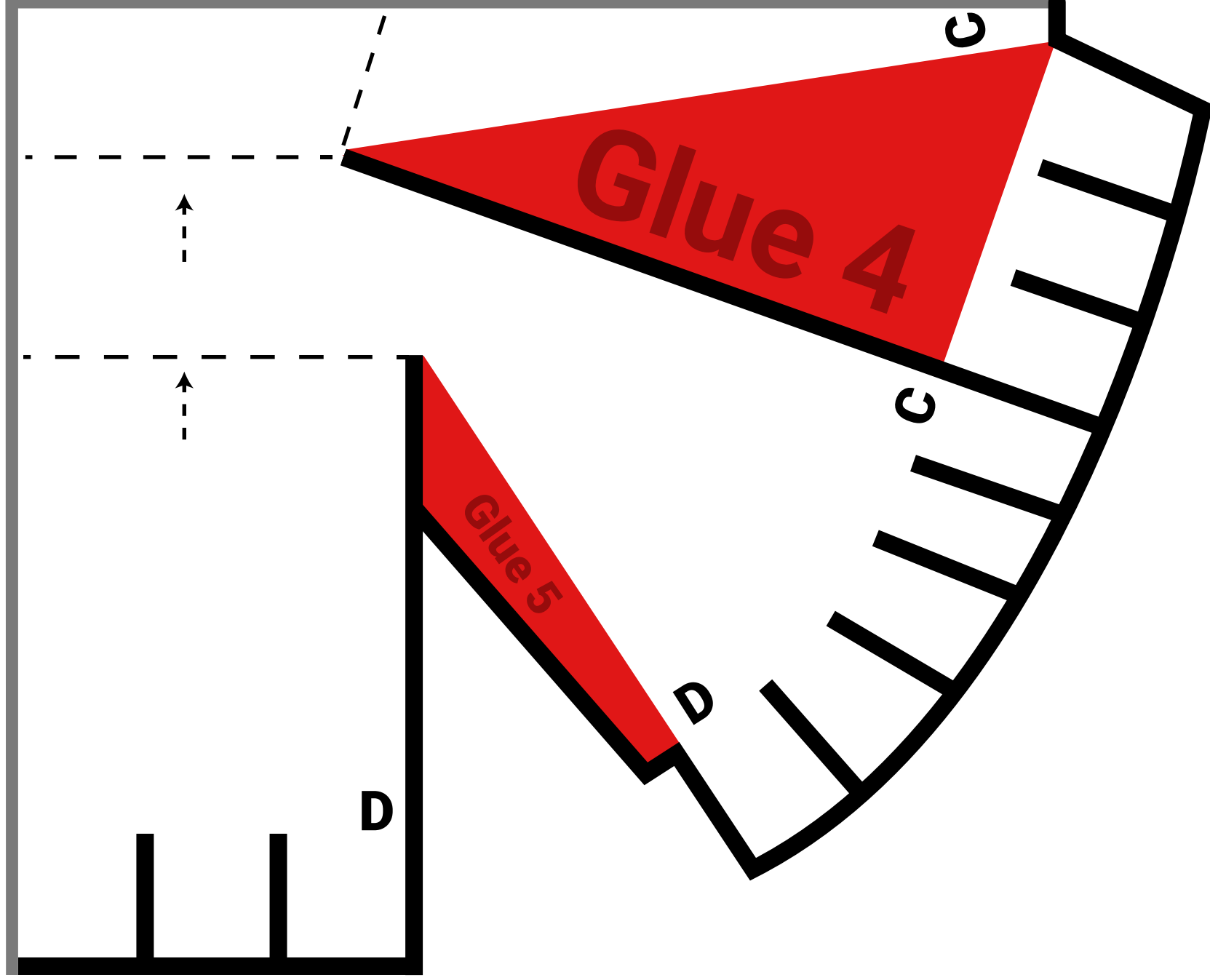
— Bold Line: Cut

- - - Dash Line: Fold

— Red Filled Areas: Glue

— Dark Gray Line: Cut (for middle)

Sides C and D



Key:

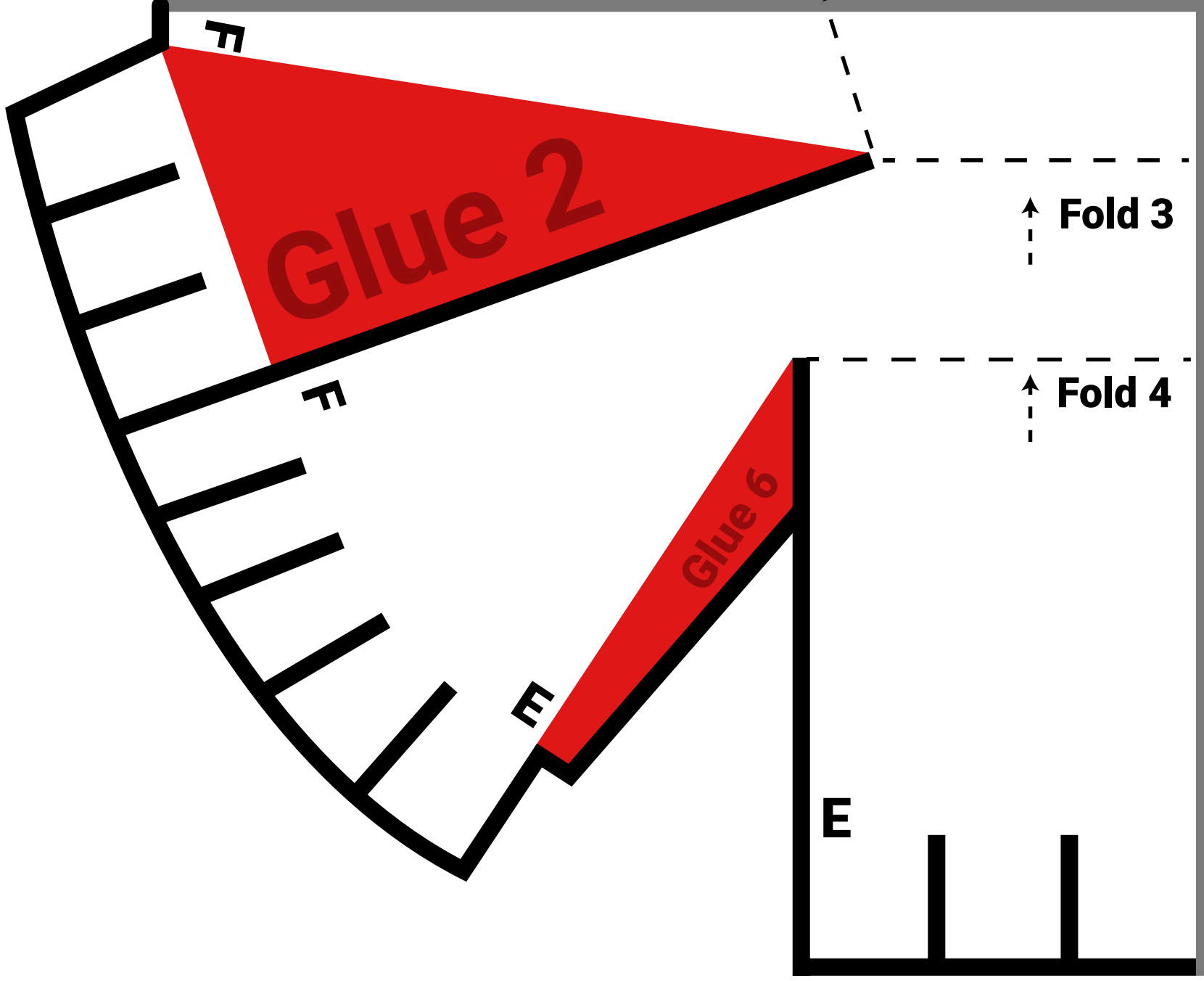
— Bold Line: Cut

- - - Dash Line: Fold

— Red Filled Areas: Glue

— Dark Gray Line: Cut (for middle)

Sides E and F



Key:

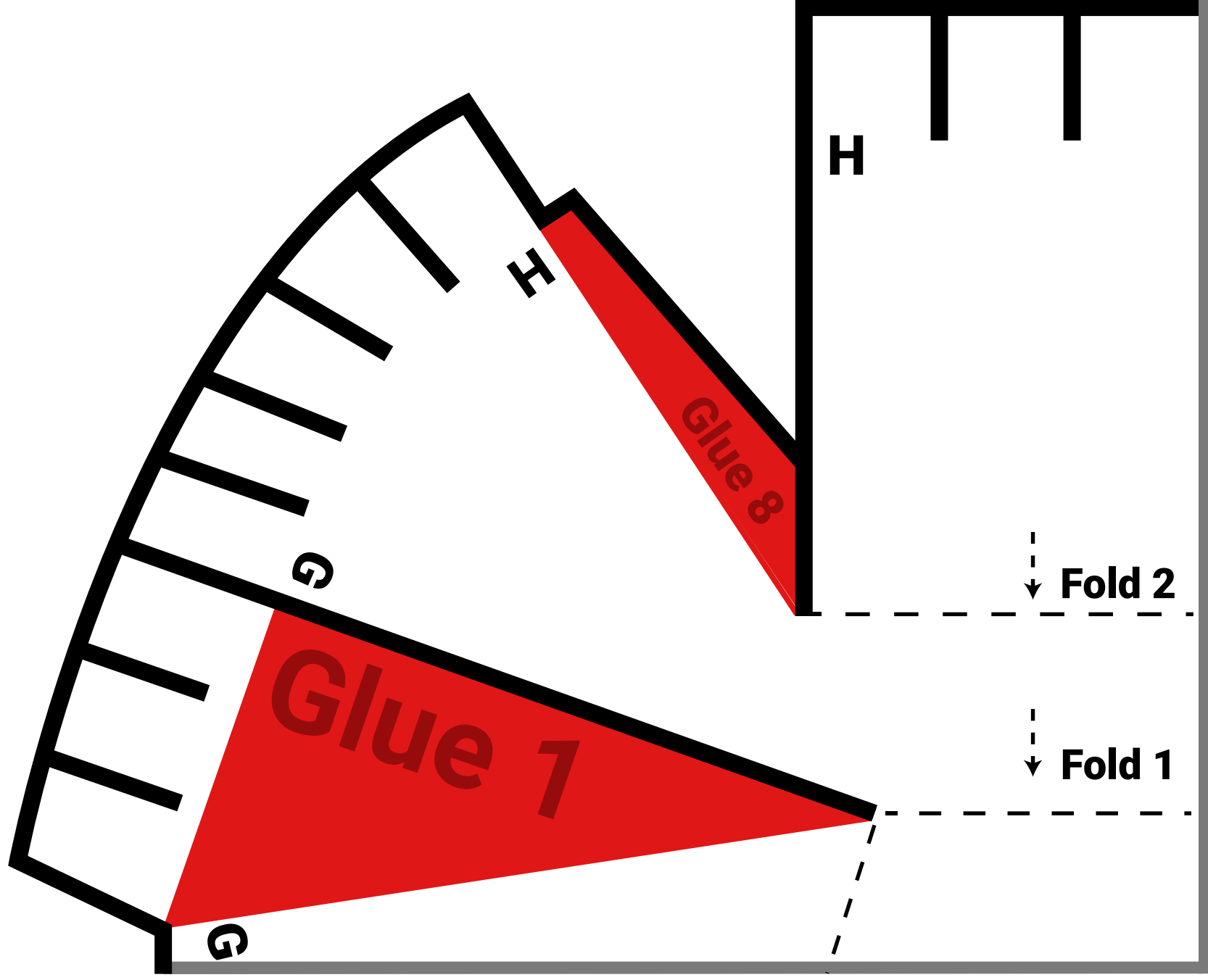
— Bold Line: Cut

- - - Dash Line: Fold

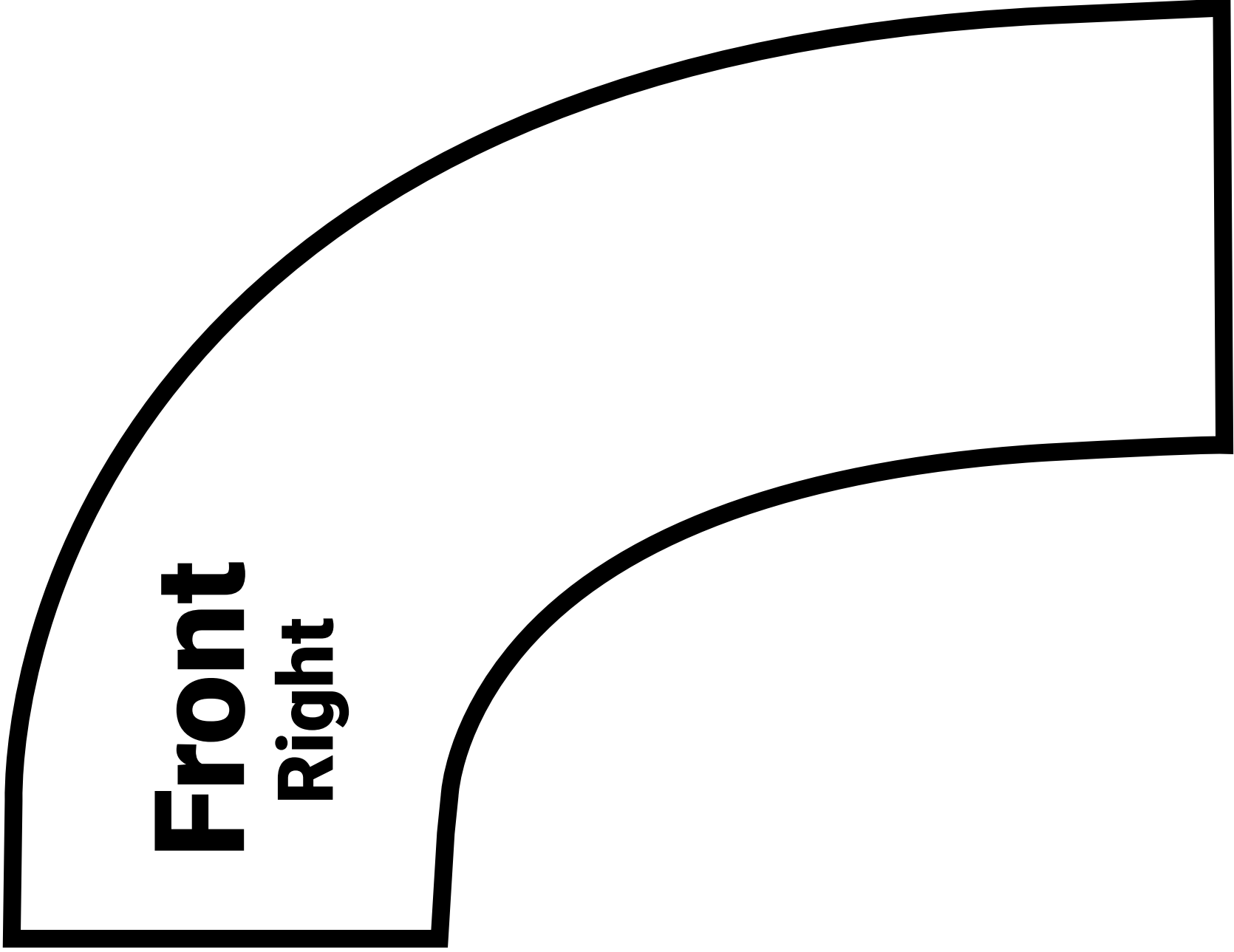
— Red Filled Areas: Glue

— Dark Gray Line: Cut (for middle)

Sides G and H

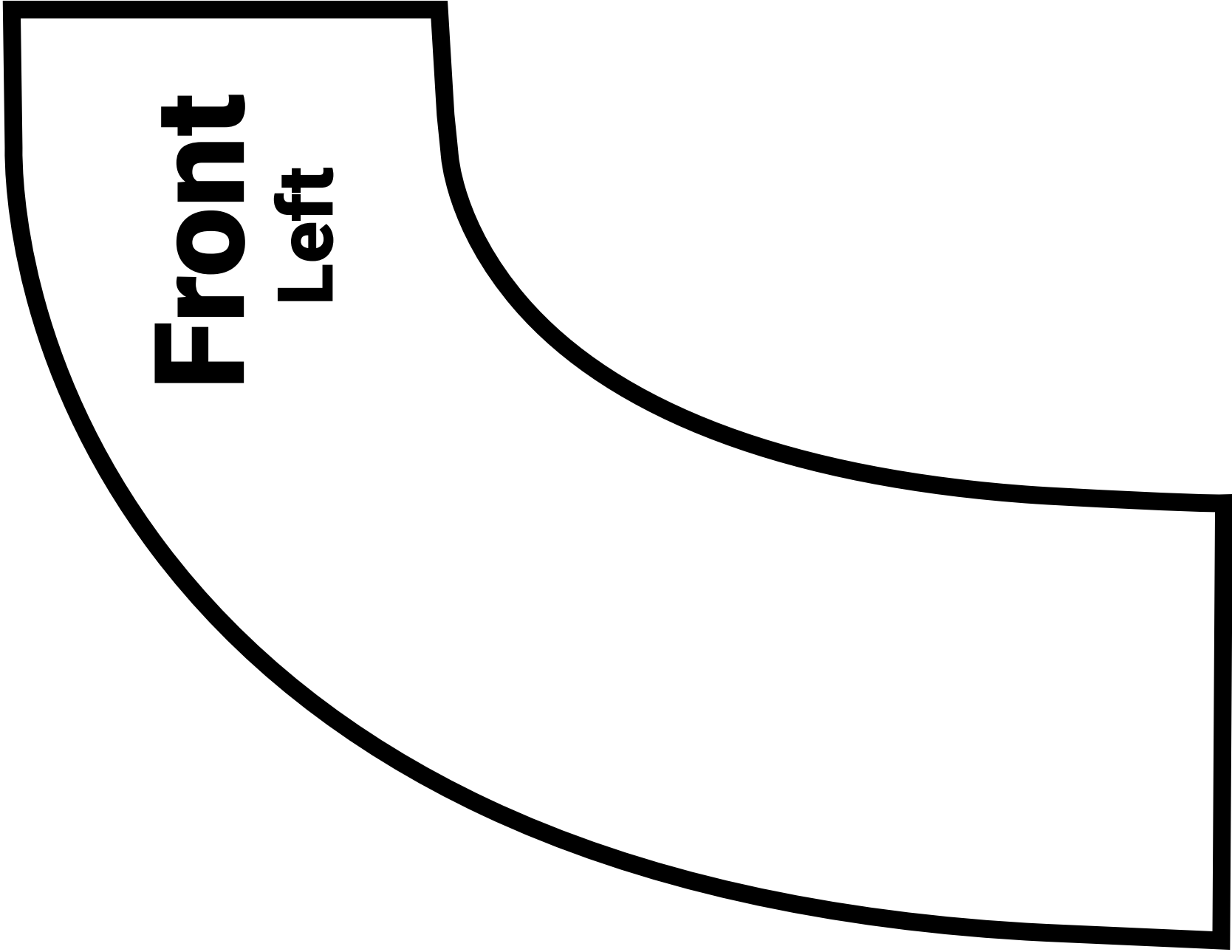


Front
Right



Back
Right

Front
Left



Back
Left

