



The House of Representatives | Worksheet



One of the main powers of a House representative is _____.



The House of Representatives is part of _____ of government.

Today, the House has _____ members, who are distributed among the 50 states in proportion to their total population.



While the Senate is designed to be a more deliberative body, the House is designed to _____.



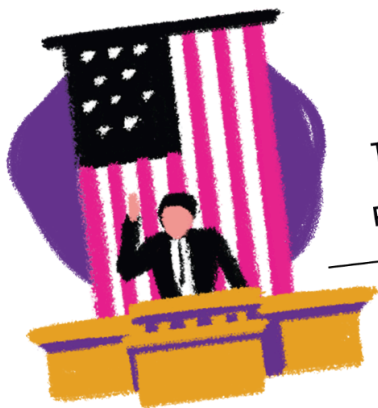
In order to be a House representative, a person must be a citizen of the United States for at least seven years, inhabit the state they represent, and be at least _____ years old.



A House member's term lasts _____ years.



The title of the leader of the House of Representatives is the _____.



Since its formation in 1789, the House is the only entity in the federal government that has always been _____.



Scan to watch episode:

The House of Representatives | Answer Key



One of the main powers of a House representative is **PROPOSING AND VOTING FOR LAWS.**



The House of Representatives is part of **THE LEGISLATIVE BRANCH** of government.

Today, the House has **435** members, who are distributed among the 50 states in proportion to their total population.



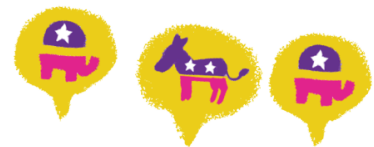
While the Senate is designed to be a more deliberative body, the House is designed to **DIRECTLY REFLECT THE WILL OF THE PEOPLE.**



A House member's term lasts **2** years.



In order to be a House representative, a person must be a citizen of the United States for at least seven years, inhabit the state they represent, and be at least **25** years old.



The title of the leader of the House of Representatives is the **SPEAKER OF THE HOUSE.**



Since its formation in 1789, the House is the only entity in the federal government that has always been **DIRECTLY ELECTED BY THE AMERICAN VOTERS.**