



THE OFFICE OF SHERIFF



The office of sheriff is often included in a state's , which lays out laws determining how a state is run.



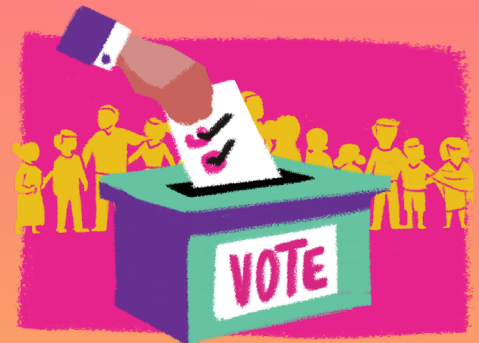
The office of sheriff is the only head of a law enforcement agency in the U.S. that is directly accountable to the .



The term comes from the Old English term "shire-reeve", which refers to a royal official who is appointed to oversee a shire in England.



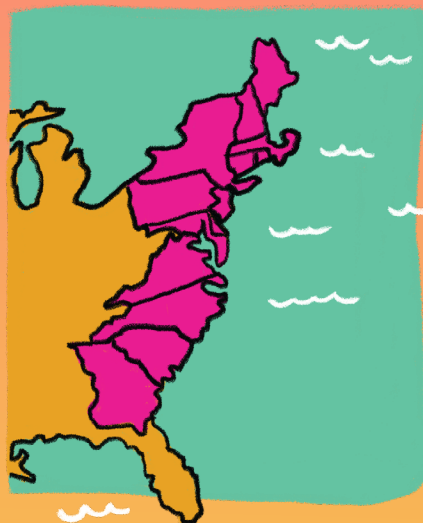
Sheriff duties vary across the country, but often include: making arrests, giving tickets and citations, taking charge of prisoners, and .



Sheriffs are often .



Sheriffs can also have several court related duties, including serving and enforcing warrants for arrest, serving as bailiff, and .



The brought the concept of a sheriff to its colonies, including North America.



In most states, a sheriff's term lasts for years.



THE OFFICE OF SHERIFF



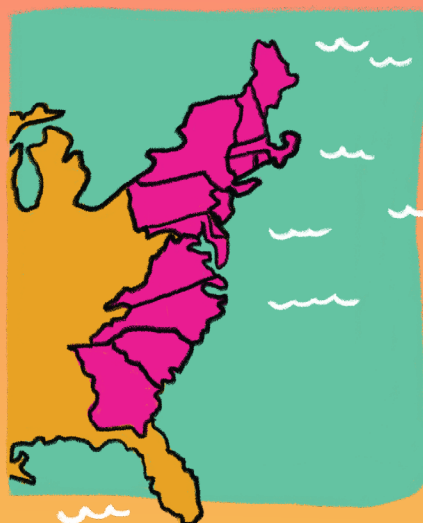
The office of sheriff is often included in a state's **CONSTITUTION**, which lays out laws determining how a state is run.



The office of sheriff is the only head of a law enforcement agency in the U.S. that is directly accountable to the **PEOPLE**.



Sheriff duties vary across the country, but often include: making arrests, giving tickets and citations, taking charge of prisoners, and **ENFORCING TRAFFIC LAWS**.



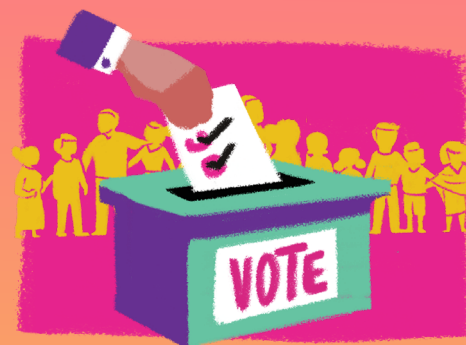
The **BRITISH EMPIRE** brought the concept of a sheriff to its colonies, including North America.



Sheriffs can also have several court related duties, including serving and enforcing warrants for arrest, serving as bailiff, and **OVERSEEING JURIES**.



The term **SHERIFF** comes from the Old English term "shire-reeve", which refers to a royal official who is appointed to oversee a shire in England.



Sheriffs are often **ELECTED BY VOTERS IN THEIR COUNTY**.



In most states, a sheriff's term lasts for **FOUR** years.