

**ROSTA APPLICATION
FOR AGRICULTURE**

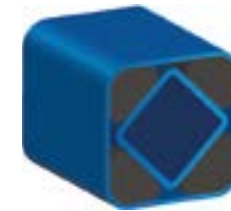
Excellence
Security
Flexibility

TILLAGE / SEEDING EQUIPMENT



ROSTA APPLICATION FOR AGRICULTURE

ROSTA DR® RUBBER SUSPENSION UNIT



Combined characteristics of a spring, a pivot bearing and a vibration/shock damper provide a perfect solution for down-forcing and stabilization of soil engaging tools for accurate working depth, even higher working speeds and changing conditions. It also offers a superior protection solution if some hard material hit the working areas.

Several extensive field tests were conducted when developing the new RUBMIX 16 compound with improved dynamic performance perfect for tillage applications. We offer torsion elements as well as rubber cords only to fit into your design and manufacturing.

Suitable to control each unit individually or for down-force of a combined section. Also, several elements can be integrated into a parallelogram structure often used in seeding, planting and tillage equipment.

High chemical resistance. If required, the elements are also available with galvanized construction for additional protection. This solution is maintenance-free and provides long service life and durability.

We provide engineering support for sizing and design. All technical drawings of standard elements can be downloaded directly from our website

www.rosta.com

TILLAGE / SEEDING EQUIPMENT



SKS MEKANIikka OY

Myynti

Martinkyläntie 50, PL 122, 01721 Vantaa

p. 020 764 5001, tekninen myynti

p. 020 764 5000, vaihde

sales.mekaniikka@sk.fi, www.sk.fi

