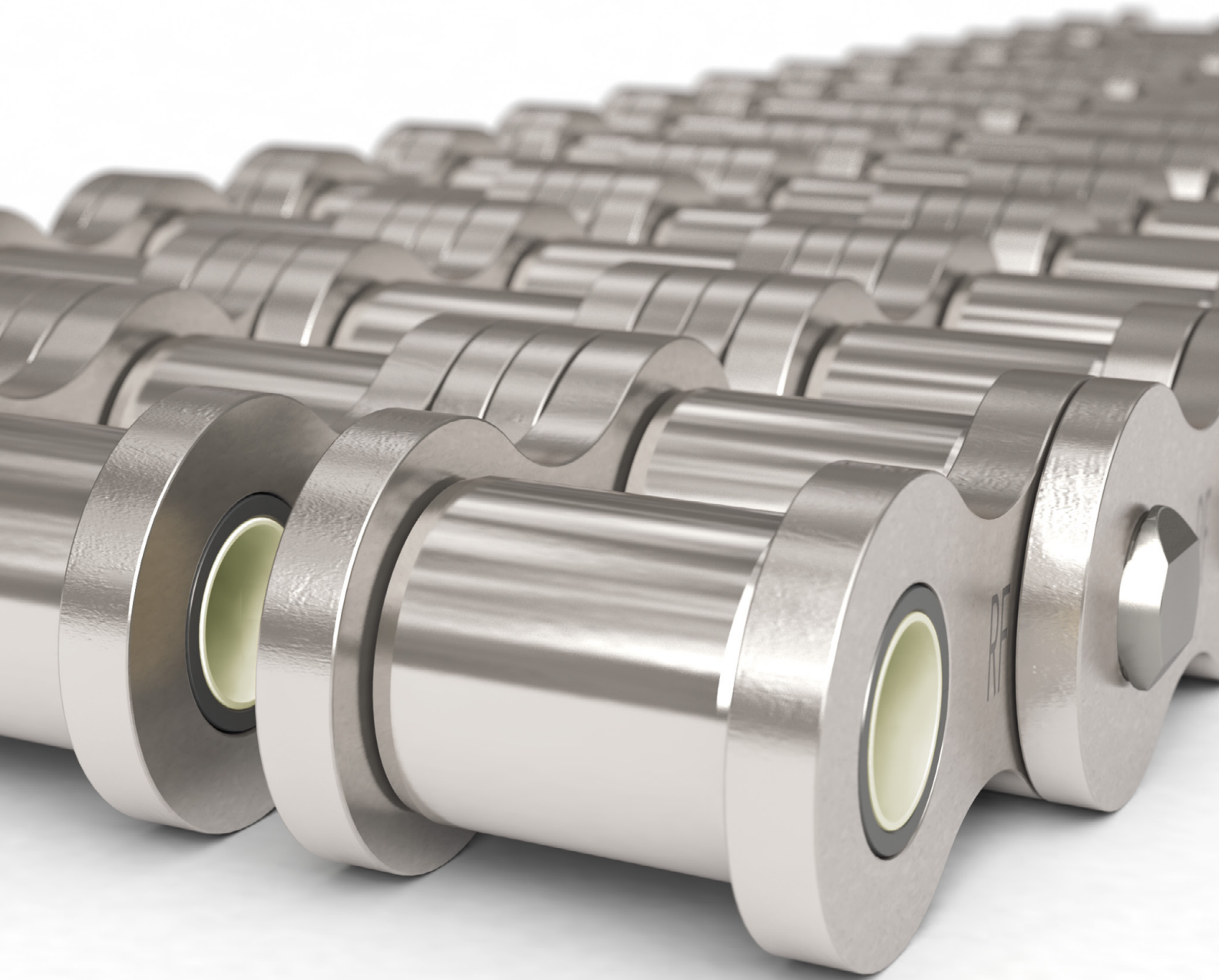




WIPPERMANN



## MARATHON RF

The high-performance stainless steel chain  
for the most demanding applications



High performance polymer bearing  
TRIGLEIT II



High performance polymer bearing  
TRIGLEIT Z



High performance polymer bearing  
TRIGLEIT FDA

## Highest freedom of maintenance and longest service life in all applications

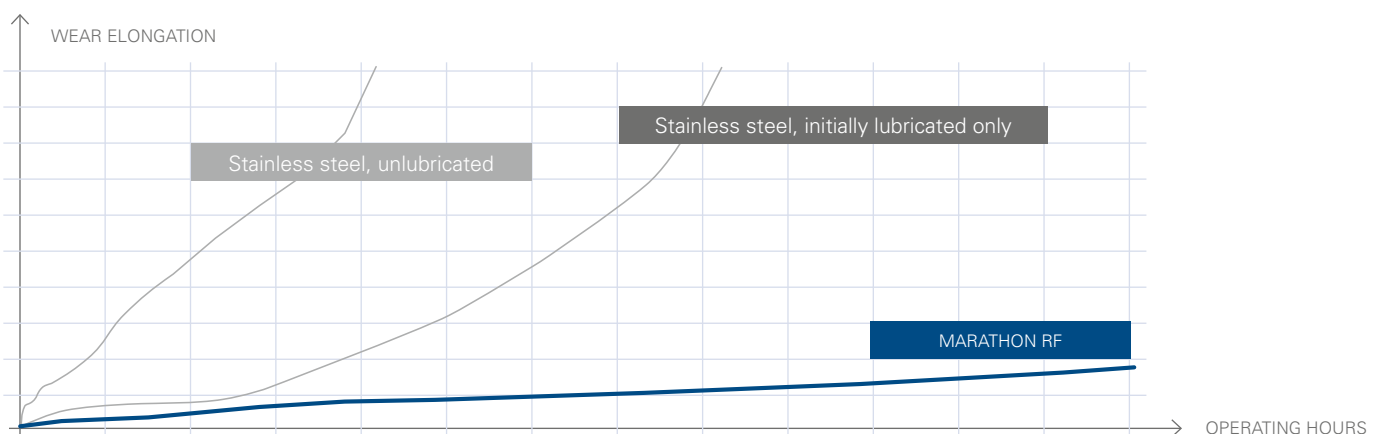
### Technical features

- Durable and low-friction polymer bearing
- All other chain components made of stainless steel grades
- Maximum chain speed  $v = 2,5$  m/s
- Working temperature  $-30^{\circ}\text{C}$  to  $+60^{\circ}\text{C}$  (TRIGLEIT II)
- Working temperature  $-100^{\circ}\text{C}$  to  $+200^{\circ}\text{C}$  (TRIGLEIT Z / TRIGLEIT FDA)
- Chain dimensions according to ISO 606; standard stainless steel sprockets can be used
- No relubrication required
- Relubrication possible
- Can also be supplied with extended pins, straight attachments, bent attachments and in special designs
- Information on chemical resistance on request
- Durable water resistance

### Application areas

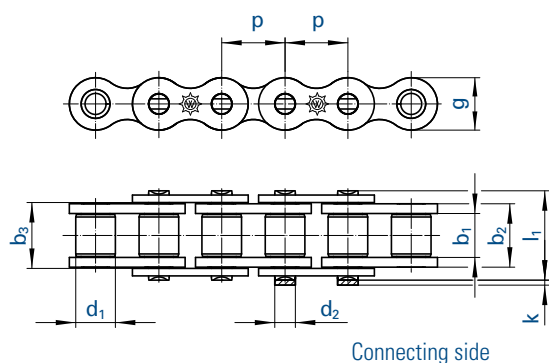
- Applications in which adequate lubrication is not guaranteed due to regular cleaning
- Applications in which lubricants are not permitted
- Packing industry
- Chemical industry
- Pharmaceutical industry
- Textile industry
- Food industry
- Sanitation industry
- Electrical industry
- Clean room applications
- Corrosive environments

### Results of long-term wear tests

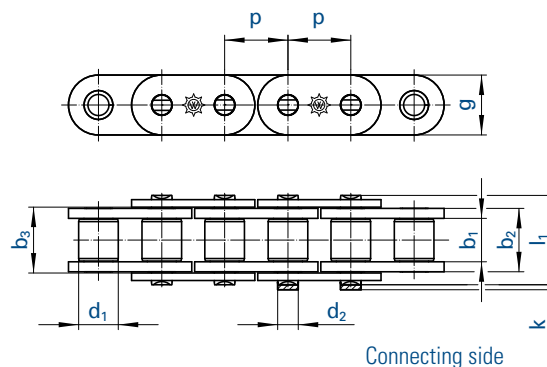




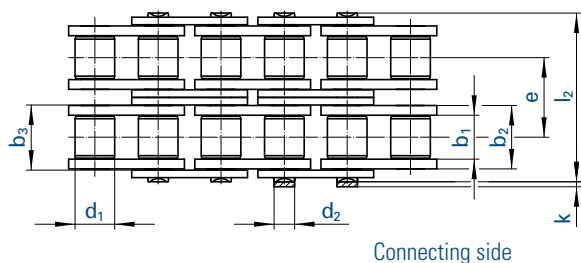
## Simplex chains



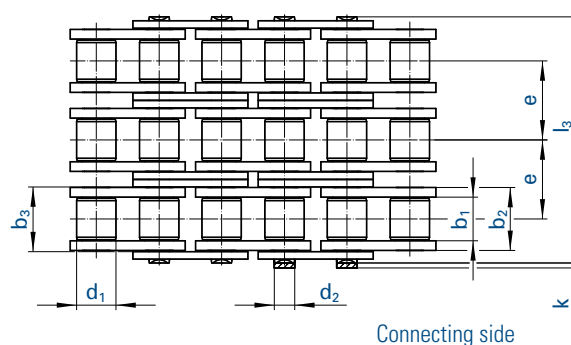
## Simplex chains (Type GL)



## Duplex chains



## Triplex chains



Chain		ISO	Pitch		Inner width	Inner link width	Outer plate width	Roller Ø	Pin Ø	Transverse pitch	Plate height	Projection over connecting link	Width over pin	Bearing area	Breaking load	Weight	Connecting links
No.	Ind.		mm	inch	b <sub>1</sub> min.	b <sub>2</sub> max.	b <sub>3</sub> min.	d <sub>1</sub> max.	d <sub>2</sub> max.	e	g max.	k max.	l max.	f	F <sub>B</sub> min.	q ≈	No.
462 RF MA	08 B-1	12,700	1/2	7,75	11,30	11,43	8,51	4,45	-	11,8	3,9	17,0	0,50	12,00	0,70	4,7,11,12,15	
501 RF MA	10 B-1	15,875	5/8	9,65	13,28	13,41	10,16	5,08	-	14,7	4,1	19,6	0,67	14,50	0,91	4,7,11,12,15	
513 RF MA	12 B-1	19,050	3/4	11,68	15,62	15,75	12,07	5,72	-	16,1	4,6	22,7	0,89	18,50	1,18	4,7,11,12,15	
548 RF MA	16 B-1	25,400	1	17,02	25,40	25,60	15,88	8,28	-	21,0	5,4	36,1	2,10	40,00	2,50	4,7,11,12	
D 462 RF MA	08 B-2	12,700	1/2	7,75	11,30	11,43	8,51	4,45	13,92	11,8	3,9	31,0	1,01	20,40	1,36	4,7,11,12,15	
D 501 RF MA	10 B-2	15,875	5/8	9,65	13,28	13,41	10,16	5,08	16,59	14,7	4,1	36,2	1,34	24,65	1,82	4,7,11,12,15	
D 513 RF MA	12 B-2	19,050	3/4	11,68	15,62	15,75	12,07	5,72	19,46	16,1	4,6	42,2	1,79	31,45	2,38	4,7,11,12,15	
D 548 RF MA	16 B-2	25,400	1	17,02	25,40	25,60	15,88	8,28	31,88	21,0	5,4	68,0	4,21	68,00	5,10	4,7,11,12	
T 462 RF MA	08 B-3	12,700	1/2	7,75	11,30	11,43	8,51	4,45	13,92	11,8	3,9	44,9	1,51	32,50	2,01	4,7,11,12,15	
T 501 RF MA	10 B-3	15,875	5/8	9,65	13,28	13,41	10,16	5,08	16,59	14,7	4,1	52,8	2,02	39,00	2,70	4,7,11,12,15	
T 513 RF MA	12 B-3	19,050	3/4	11,68	15,62	15,75	12,07	5,72	19,46	16,1	4,6	61,7	2,68	49,50	3,12	4,7,11,12,15	
T 548 RF MA	16 B-3	25,400	1	17,02	25,40	25,60	15,88	8,28	31,88	21,0	5,4	99,9	6,31	108,00	7,50	4,7,11,12	

Can also be supplied with attachments, straight plates (type series GL) and as double pitch roller chains (dimensions according to ISO 1275). Chains 548 available as type series GLs with plate height g = 21 mm (max.) and as type series GL with g = 24 mm (max.). Sprockets on request.

### Connecting links: According to ISO (...)



No. 4 (B)  
Inner link



No. 7 (A)  
Outer link  
(to be riveted)



No. 11 (E)  
Spring clip  
connecting link



No. 111 (S)  
Connecting link  
with cottered pin



No. 12 (L)  
Single  
cranked link



No. 15 (C)  
Double  
cranked link



## The MARATHON RF series: Powerful and economical thanks to perfectly combined components

Permanent water contact, dry running, extreme temperatures as well as contact with food or chemical substances: The combination of stainless steels with high-load and low-friction polymer bearings and individual materials for special applications on request enable precise adaptation to our customers' versatile fields of application.

The new generation of the MARATHON RF series offers a high degree of cost efficiency with optimum drive performance.

### As versatile as your requirements: TRIGLEIT polymer bearings

You define the application-specific focus for optimum performance and maximum cost efficiency of your drive solution. With three different materials, we offer the optimum bearing for every application.

TRIGLEIT polymer bearings	II	Z	FDA
Cost efficiency	•••	••	•
Wear	•••	••	••
Friction	•••	••	•
High temperatures	•	•••	••
FDA approval, direct food contact	-	-	•••
Chemicals	•	••	•••
Steam*	-	-	••
Water contact	•••	•••	•••
Dry running operation	•••	•••	•••

••• very good •• good • limited - not possible \*alternative solutions on request



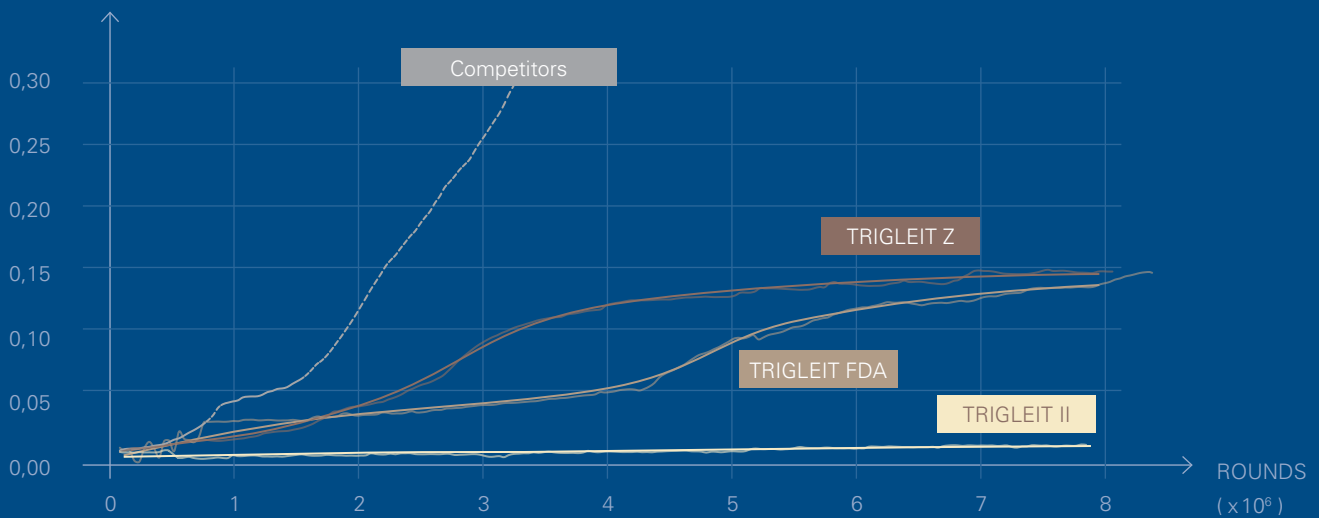
## TRIGLEIT polymer bearings: Best performance with regard to friction and wear

All Wippermann polymer bearings achieve top results in terms of friction and wear for dry running operation in their specific areas of application. If initial lubrication is possible, the service life of the chains can be increased by a multiple.

The new TRIGLEIT II combines corrosion protection with extremely high durability for long-term use in humid environments.

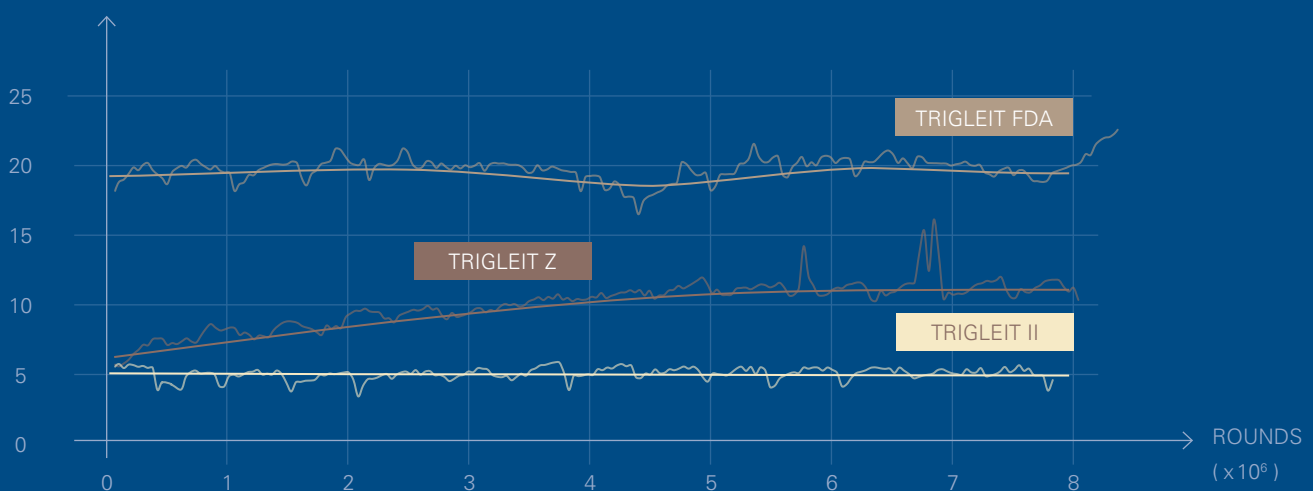
### MARATHON RF - wear elongation

ELONGATION (%)



### MARATHON RF - heating by friction losses

TEMPERATURE DIFFERENCE ( $^{\circ}\text{C}$ )



**WIPPERMANN jr. GmbH**  
Delsterner Straße 133  
58091 Hagen  
Germany

**Phone** +49 23317820  
**Fax** +49 2331782356  
**E-mail** [info@wippermann.com](mailto:info@wippermann.com)  
**Internet** [www.wippermann.com](http://www.wippermann.com)