



SKSCONTROL

Visual Stage G6.5

Stage automation software



Visual Stage G6.5 stage automation software for unlimited number of axis

Easy to use, intuitive Visual Stage G6.5 software for unlimited number of axis. Visual Stage has full show running functionality used on cruise ship theaters all over the world. As an example of shows run on cruise ships with Visual Stage G6 system are the Broadway musicals Hair and Chicago. Visual Stage software strengths are safety, reliability and ease of use.

The software can be used in number of different configurations depending on the venue scale and needs. Starting from single PC to redundant server configuration with multiple user interfaces and several redundant motion controller sections.



Safety

Software creates safety by being reliable, available and helping users to understand what is happening on their stage. Visual Stage software improves the stage safety by:

- Allowing the operators to concentrate on what is happening on the stage instead of software
- Using 3D visualization for error reporting and shortens the time from error to understanding what happened. Correct action can then be executed without guessing.
- Integrating and taking full advantage of the safety devices of the control system

Reliability

With highly modular architecture and automatic service discovery of Visual Stage software, any program component to run in any PC on the network. With this design, the system is really hard to keep down as any single computer can take full responsibility.

Ease of use

While operating the equipment and moving scenery, operators should be able to concentrate on the stage instead of the software. Visual Stage user interface is designed with this philosophy in mind and importantly it keeps the learning curve shallow and enables users to be familiar with their system quickly.

Features

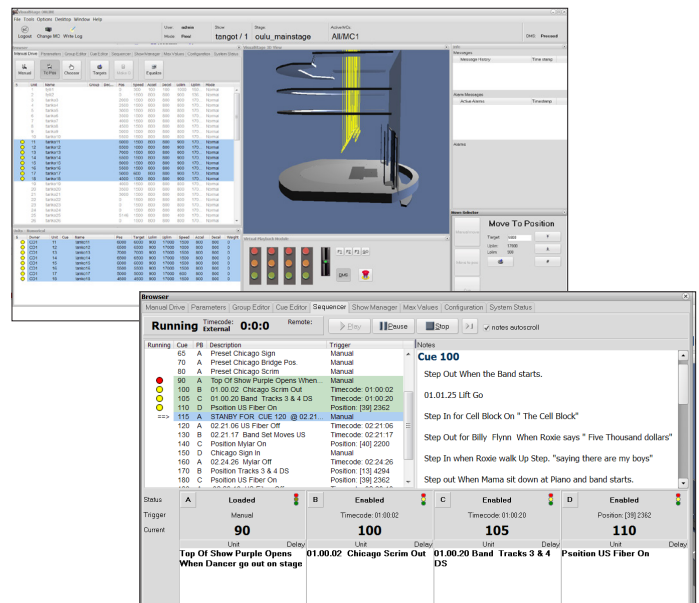
- Unlimited axis control software
- Up to 20 full user interfaces in the network
- External interfaces: SMPTE timecode, Digital I/O, Richmond GO commands
- Drive Engine motion control drivers for: SKS Control ACN, SKS Control MC400, Beckhoff, Generic Modbus TCP/UDP, Generic ADS
- Synchronous groups
- Safe groups

UI Features

- Selection modes: List, touch buttons, cue, groups
- Personal logins and user definable security groups and permissions
- User based axis restrictions
- Alarm list
- Message view
- Available in multiple languages
- Preset targets for axis

Real time views:

- Spread sheet view
- Selected axis view
- 3D view
- 2D bar graphics
- Show status
- 3D error reporting
- 3D alarm reporting



Show running features

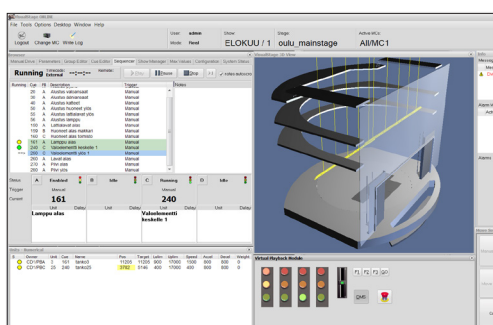
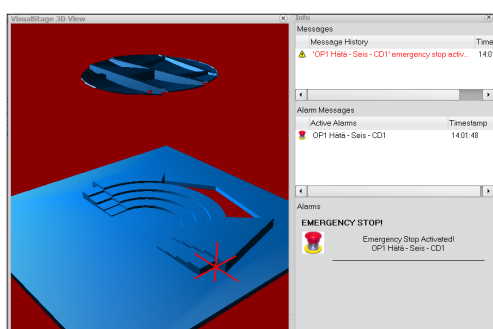
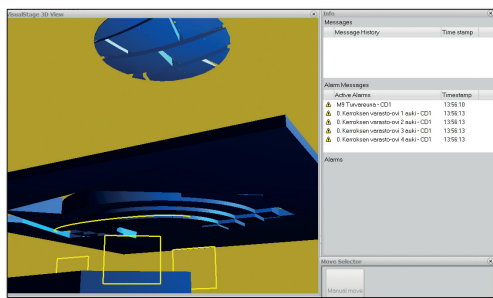
- Unlimited number of shows and cues
- 4 independent playbacks
- Intuitive user interface
- Several cue trigger modes: Manual, Autofollow, Timecode, Input, Richmond, Position
- Cue wide delays
- Safe cues
- Looping of cue sequences
- Axis programming by speed, acceleration, deceleration, delay and target
- Drag and drop out of sequence cue running
- Retrimming stage back or forward to any location in the show
- External cue execution from any control point

System features

- Visual Stage Offline for training, show creation and simulation
- Extensive system log
- Remote support integration
- Centralized backup location
- Zero configuration when adding user interfaces
- Supports multiple redundant motion controllers
- Runs on standard windows computer if needed in case of hardware failure
- Automatic service discovery for network reconfiguration

Supports

- Visual Stage G6 Control Desk
- Visual Stage G6 HOT
- Visual Stage G6 Server Rack
- Visual Stage G6 Playbacks



SKS Control Oy

Sales, design, production and service

Martinkyläntie 50, FI-01720 Vantaa
FINLAND

Phone: +358 20 764 5000
control@sks.fi
www.sks.fi

SKSGroup

SKS Control Oy
SKS Mekaniikka Oy
SKS Tehnika OÜ (Tallinna, Viro)

