



# TRC3010 System

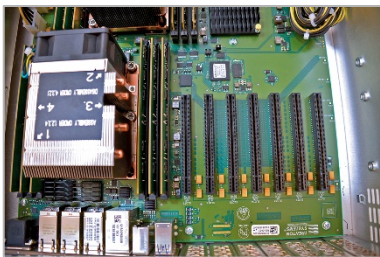
RUGGEDIZED | MADE IN USA



## Your Durable, Lightweight 3U Powerhouse

Trenton's resilient TRC3010 system is perfect for space-limited environments, no matter the conditions. Sitting at just over five inches in height and roughly 20 pounds, TRC3010 configurations are trusted choices for SWaP-conscious programs and applications globally.

### PRODUCT HIGHLIGHTS



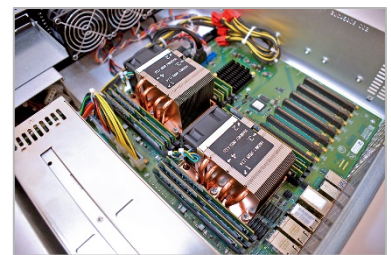
#### Up to 7 PCIe Slots

Seven PCIe Gen 3 slots located right on the board. You can even expand your selection of PCIe slots with Trenton's PCIe Expansion Kit.



#### Up to 9 SATA SSDs

The TRC3010 supports up to three 3.5" drive bays, or nine SATA 6 Gb/s drives. You'll have plenty of speed and capacity available to you.



#### Dual Xeon® CPUs

The TRC3010's motherboard utilizes some of the latest Intel® Xeon® SP Silver and Gold CPUs. Choose between three different processors.

---

## Section 2 / Technical Specifications

### MODEL NUMBER

TRC3010

### BOARD TYPE

Dual-processor [SSP8268 motherboard](#) with up to 1.5TB DDR-2933 across 12 ECC RDIMMS (six channels), seven 1GbE LAN Ports, 6 SATA 6G Ports, 10 USB 3.1 Gen 1 Ports (six on rear I/O, two on front I/O, two additional ports available via header), 1 VGA Port, 1 RS-232 Serial Port, and 2 U.2 Ports

### ENVIRONMENTAL

- ▶ Temperature: -10° C to 50° C (operating) and -40° C to 70° C (storage)
- ▶ Humidity: 5% to 90% non-condensing

### DRIVE BAYS

3 - front-access 3.5" bay

Options for a variety of SSD/HDD/ODD configurations

### CONSTRUCTION

Lightweight, rugged aluminum with corrosion-resistant coating

### COLOR

Black powdercoat front panel with logo standard. Customization/white boxing services available.

### POWER SUPPLY

Redundant PSU 1500W

*\*Other options available upon request*

### COOLING

3 - 92mm exhaust fans, 120CFM, each with chassis temperature monitoring speed control

### FRONT PANEL

LEDs for power, drive activity, and cooling fan statuses; power on and reset switches; two USB ports

### HOLD-DOWN BAR

Robust hold-down bar for the SHB/SBCs and the option cards for added security in high-vibration environments

### CONFIGURATION

The I/O slots, SHB I/O, 3.5" drive bays, and additional USB ports are accessible at the front and rear of the rack. The fans are located at the front of the chassis. The PSU is located at the rear of the chassis.

### DIMENSIONS

- ▶ 19.0" (W) x 5.25" (H) x 20" (D)
- ▶ 48.3cm (W) x 13.3cm (H) x 50.8cm (D)
- ▶ 25-26 lbs.

*\*Final system weight is dependent on specific system configuration.*





**Trenton Systems**  
1725 MacLeod Drive  
Lawrenceville, GA 30043

[www.trentonsystems.com](http://www.trentonsystems.com)  
t. 770.287.3100  
e. [info@trentonsystems.com](mailto:info@trentonsystems.com)

