

# Sensory<sup>TM</sup> Rating Sheet



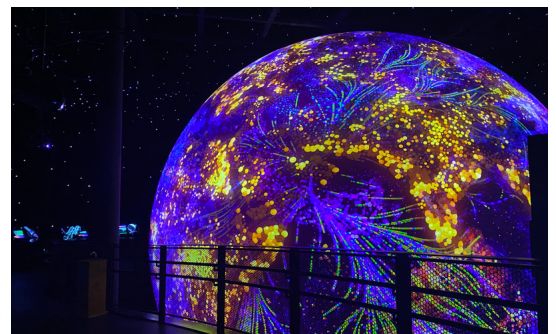
## Mobility Pavilion



- Flashing and Strobing Lights
- Bright Lights
- Simulated Lighting
- Very dark in some passage ways



- Elevator has a large Boom at end
- Complex sounds from multiple directions
- Simulated Thunder



- No strong scent when wearing mask



Those with Photosensitive Epilepsy need to take precautions

Recommended:  
Headphones & Sunglasses



- Nothing you have to touch



Air Conditioning is pleasant yet may be drastic difference from outside



- This experience involves a large elevator/Lift
- There is a gentle circular ramp you walk down
- There are interactive things you can touch



SENSORY ACCESS  
ACCESS FOR ALL