

Phenix EZStairs™ Stair Tread | FAQs

Q Can the Top Step be flush mount instead of overlap?

A: No, because of the expansion spaced needed with floating floors, the Top Step must be installed overlapping. More information about Top Step installation can be found in the EZStairs™ Stair Tread Installation guidelines.

Q If the nose is already cut off, can this be used?

A: Yes, simply use the EZStairs™ Stair Nose filler.

Q Will this fit a thicker stairnose?

A: No, our stair treads fit stairs up to 1 1/8" thick.

Q What adhesive is required?

A: We only recommend the use of a urethane adhesive

Q Can you install over existing flooring?

A: No, any existing flooring must be removed down to the bare tread prior to the installation of the EZStairs™ Stair Tread system.

Q Can you install over painted stairs?

A: No, first the paint must be scraped down to the bare tread to ensure the best possible bond between the adhesive and the stair tread.

Q What should be used as a riser?

A: If the riser is 7 1/4" or less, the actual Microban® Collection SPC flooring can be used as a riser. Phenix also offers a white riser option.

Q Are the stair treads available in wider lengths?

A: EZStairs™ Stair Treads are only available in 48" widths, but multiple treads can be installed side by side using the Mannington MSS 20 Seam sealer to seam between the treads. To order MSS 20 please call Mannington Customer Service at 877-845-9884 and use order code 186869.

Q Can EZStairs™ Stair Treads be customized to fit an open ended right or left stair tread?

A: Yes, EZStairs™ Stair Treads can be customized to fit open ended stairs. Use the Mannington MSS 20 seam sealer to seal between the tread and customized end.

Q What is the coverage area for the MSS 20 Seam Seal?

A: A single pint will cover 400-600LF of seams.

Q Do the stair treads need to be acclimated to the job site?

A: No, there is no need to acclimate as long as there are not extreme variations in temperature.

Q Can a carpet tread or runner be attached to the top of the treads?

A: Yes if it is attached through to the existing step.

Q Can small landings be full glued to achieve a flush installation?

A: Yes, a landing can be full glued using a stair tread cut down to just the nosing.

Q Do I have to remove my existing spindles to install the new treads?

A: Yes, it is best to remove the spindles and reinstall them after the stair treads have been installed.

Q What do I do with a rounded bottom step?

A: A rounded step would need to be squared to accommodate the nose profile.

Q How can I order sundry and accessory items for the EZStairs™ Stair Tread system?

A: Order Codes for sundry and accessory items are as follows:

- Stair Nose Fill: MR105-M000
- White Riser: MR104-M100
- Mannington MSS 20 Seam Sealer: Mannington Order Code 186869, to order call 877-845-9884

Phenix EZStairs™ Stair Tread Specification

DESCRIPTION

Phenix EZStairs™ Stair Treads are manufactured in a heterogeneous product structure. The products meet the performance requirements of ASTM F-2169 Standard Specification for Resilient Stair Treads, Type TV, Class 2, Group - (NA), Grade 1 product. Product is certified as a low VOC emitting product under FloorScore. All Phenix EZStairs™ Stair Treads are available in a single construction format. **Refer to Figure 1 for full details regarding Stair Tread dimensions.** Standard formulation meets ASTM E 648 requirements with Class 1 Flammability requirements. Phenix EZStairs™ Stair Treads are designed for interior applications only and not recommended for environments where the product will be exposed to animal fats, vegetable oils, or petroleum-based materials (e.g.: commercial kitchens).

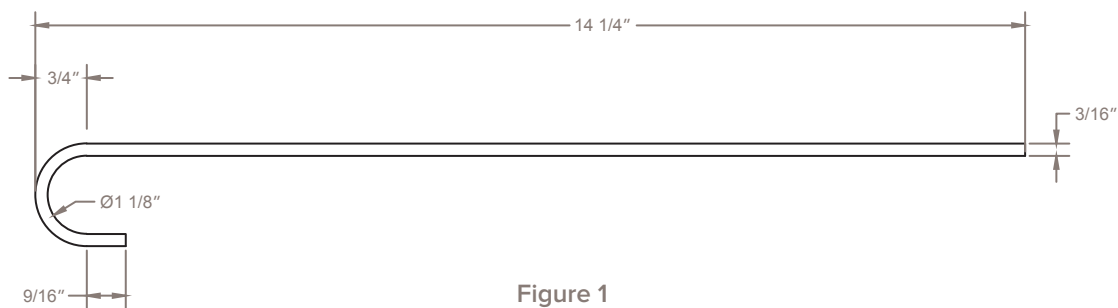


Figure 1

PRODUCT PERFORMANCE AND TECHNICAL DATA

Hardness: ASTM D 2240: ≥ 85 Shore A

Abrasion Resistance: ASTM D 3389: < 1.0 gm loss

Slip Resistance: UL410(ASTM D2047): COF ≥ 0.5

Color Heat Stability: ASTM F 1514: < 8.0 E

Static Load Limit: ASTM F 970: 250 PSI

Fire Resistance:

ASTM E 648/NFPA 253: Class 1 Critical Radiant Flux)

ASTM E 662/NFPA 258: less than 450 (Smoke Density)

Chemical Resistance: ASTM F 925: Passed - 5% Acetic acid, 70% Isopropyl alcohol, Sodium hydroxide solution (5% NaOH), Hydrochloric acid solution (5% HCl), Sulfuric acid solution (5% H₂SO₄), Household ammonia solution (5% NH₄OH), Household bleach (5.25% NaOCl), Disinfectant cleaner (5% active phenol)

INSTALLATION PREPARATION

FOR FULL INSTALLATION INSTRUCTIONS, refer to the Phenix EZStairs™ Stair Tread Installation Guidelines. The installation of Phenix EZStairs™ Stair Treads should not begin until the work of all other trades has been completed, especially overhead trades. Areas to receive stair treads shall be clean, fully enclosed, weather-tight, and maintained at a uniform temperature of at least 70°F for 24 hours before, during, and after the installation is completed. The stair treads and adhesives shall be conditioned in the same manner. Stair steps shall be smooth, flat, permanently dry, clean and free of all foreign material, such as dust, paint, grease, oils, solvents, curing and hardening compounds, sealers, asphalt, and old adhesive residue. Stair Treads may be installed on any smooth, dry interior step. Do not install on exterior steps subject to weather. Stair shape shall conform closely to stair tread contour, especially where the flat part of the tread joins the nosing. Stair treads shall be trimmed to within 1/16" of the riser and stringer to allow for expansion. Adhesives shall be applied per Phenix's instructions. The stair tread and nosing portion of the stair tread shall be bonded directly to the step surface. Do not overlap the nosing over resilient riser material. Stair treads shall be rolled, with a J- hand roller, after installation, to ensure proper bonding.

ADHESIVE/COVERAGE

A urethane adhesive is recommended. Recommended bead size is 1/4".

WARRANTY

Phenix EZStairs™ Stair Treads have a limited 10-year residential wear warranty. For complete details, contact Phenix or an authorized Phenix dealer.

MAINTENANCE

Refer to the Phenix EZStairs™ Stair Treads Installation Guide for complete maintenance details.

THIS PRODUCT IS FINISHED IN THE USA.

Phenix EZStairs™ Stair Tread Warranty & Floor Care

Immediately after installation:

- Keep traffic light during the first 24 hours
- Avoid scrubbing or washing the EZStairs™ Stair Tread for 48 hours after installation

Limited Warranty for Residential Use:

Phenix warrants that EZStairs™ Stair Tread will be free from manufacturing defects for 10 years following the date of the purchase under normal household conditions*.

* Normal household conditions mean the daily activities commonly associated with residential use and includes but not limited to that the floor will not stain from human or animal urine, vomit or feces.

Remedies Available to You

If your EZStairs™ Stair Tread fails to perform as stated in the applicable Limited Warranty, Phenix will, at its option, (i) repair without charge the affected area to conform to the warranty; or (ii) replace the EZStairs™ Stair Tread without charge with another EZStairs™ Stair Tread of equal value and/or quality. If your EZStairs™ Stair Tread was installed by a professional flooring contractor hired by you, Phenix will also pay for the professional labor cost to install your replacement EZStairs™ Stair Tread.

Warranty coverage for a replacement panel will be limited to the remaining time of the original warranty.

THESE ARE YOUR EXCLUSIVE REMEDIES UNDER THE LIMITED WARRANTIES SET FORTH ABOVE.

If You Have a Warranty Claim

Contact the store or retailer where you purchased the EZStairs™ Stair Tread and describe the problem. In many cases, your retailer can provide you with a solution to correct the situation. If you need additional assistance or wish to file a complaint, simply call our Customer Care Team at 1-800-609-9557.

Proof of purchase (store receipt) is required to verify all warranty claims. Our representatives will provide you with helpful information to address your concerns and walk you through the easy steps necessary to file a claim. We will make every effort to ensure your claim is processed quickly and efficiently.

For easy reference for your records, fill in the following information and keep this sheet handy with your store receipt.

EZStairs™ Stair Tread Color: _____

Date when purchased: _____

Store Name & Location: _____

EZStairs™ Stair Treads Warranty Exclusions and Conditions:

- Phenix limited warranty protection applies to floors purchased on or after July 1, 2019. Proof of purchase is necessary to verify all warranty claims.
- Limited Warranties:
 - Do not apply to “seconds” or “off-goods” grade products.
 - Apply only to the original purchaser and the original installation site and not transferable.
 - Do not cover conditions or defects caused by improper installation, the use of improper and non-recommended adhesives.
 - Do not cover construction-related damage
 - Do not cover conditions caused by improper use or maintenance, including but not limited to:
 - Loss of gloss or build-up of dulling film due to lack of maintenance or improper maintenance
 - Damage resulting from the failure to follow EZStairs™ Stair Tread care instructions as outlined in this warranty
 - Scuffs, scratches or cuts
 - Damage or discoloration from carpet dyes, fertilizers or other chemicals
 - Staining from use of mats not labeled non-staining
 - Damage caused by burns, flooding, fires and other accidents

- Damaged caused by abuse (i.e. dragging heavy or sharp objects across the floor without proper protection)
- Damage caused by caster wheels or vacuum cleaner beater bars
- **The Limited Warranties do not cover discoloration from heat or sunlight. A combination of heat and sunlight can cause most home furnishings to fade or discolor. For further information, please see the Phenix floor care instructions in this warranty.**
- Do not cover variations of color, shade or texture of the floor you purchase from those shown on samples, photographs or literature
- For purposes of the Limited Warranty for Residential use, “wear out” means complete loss of the Phenix wear layer so that the printed pattern or design of the floor is altered.
- Although EZStairs™ Stair Tread is not susceptible to damage from moisture, excessive subfloor damage is an ideal breeding ground for mold, mildew and fungus. The Limited Warranties do not cover discoloration from mold or from flooding, leaking plumbing or appliances, water entering through sliding glass doors or similar conditions.
- UNDER THE TERMS OF THESE LIMITED WARRANTIES, PHENIX WILL NOT BE LIABLE FOR AND SPECIFICALLY DISCLAIMS ANY INDIRECT, SPECIAL, INCIDENTAL, CONSEQUENTIAL, OR OTHER DAMAGES OF ANY KIND, NO MATTER WHAT THE CAUSE.
- Note: Some states or provinces do not allow the exclusion or limitation, or exclusion may not apply to you.
- THERE ARE NO IMPLIED WARRANTIES, INCLUDING THE IMPLIED WARRANTIES OF MERCHANTABILITY AND FITNESS FOR A PARTICULAR PURPOSE, EXTENDING BEYOND THE TERMS OF THESE LIMITED WARRANTIES.
- Note: Some state and provinces do not allow limited on how long an implied warranty lasts, so the above limited may not apply to you.
- EXCEPT AS SET FORTH HEREIN, THERE ARE NO EXPRESS WARRANTIES MADE BY PHENIX COVERING THIS PRODUCT.
- This warranty gives you specific legal rights, and you may have other rights which vary from state to state in the U.S. or province to province in Canada.

Phenix EZStairs™ Stair Treads

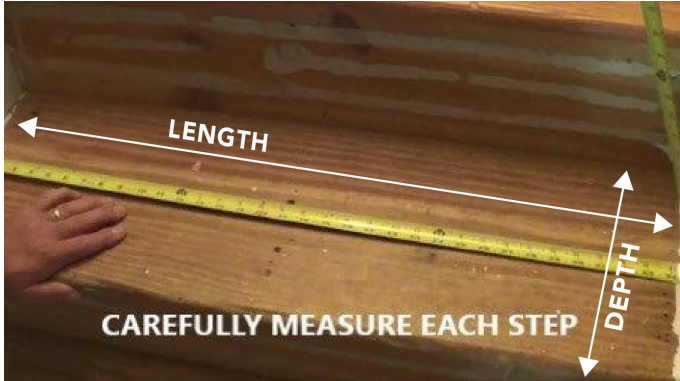
1. Prepare Existing Steps

Step must be clean, remove all existing carpet, remove any remaining staples, adhesives, paint, sealer, etc. Step must be sound, dry and free from any uneven surface. This is critical to ensure a proper bond between the step, adhesive and EZStairs™ Stair Tread.

2. Measure

If your EZStairs™ Stair Tread fails to perform as stated in the applicable Limited Warranty, Phenix will, at its option, (i) repair without charge the affected area to conform to the warranty; or (ii) replace the EZStairs™ Stair Tread without charge with another EZStairs™ Stair Tread of equal value and/or quality. If your EZStairs™ Stair Tread was installed by a professional flooring contractor hired by you, Phenix will also pay for the professional labor cost to install your replacement EZStairs™ Stair Tread.

FIGURE 2



3. Transfer Measurement

Contact the store or retailer where you purchased the EZStairs™ Stair Tread and describe the problem. In many cases, your retailer can provide you with a solution to correct the situation. If you need additional assistance or wish to file a complaint, simply call our Customer Care Team at 1-800-609-9557.

FIGURE 3A



Check fit of cut stair tread, new tread nose should fit against existing nose, verify by measurement for a precise fit. Be certain depth measurement is from inside new tread nose to riser.

Be certain to leave identifier for each step to assure accuracy on each step measurement (Fig. 3b).

FIGURE 3B



4. Install Tread

It is recommended to work from top step down to avoid working on newly installed tread.

Once new tread is cut, check for fit prior to permanent installation. Apply several beads of adhesive to the back of tread or to existing step, using a 1/4" leading edge of the nose. Install step in place and slide tight against existing nosing. A rubber mallet can be used to tap the tread in

place against existing nose, and new tread surface to assure proper bond to tread backing. It is more important to be tight to nose and net to the existing riser. Once installed we recommend no foot traffic for 8 hrs.

FIGURE 4

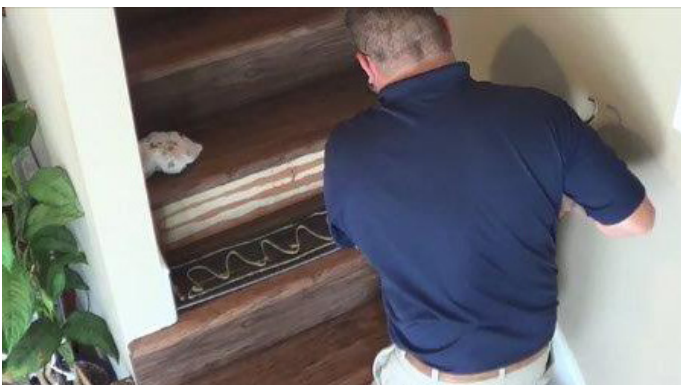


5. Riser

After treads are installed, carefully measure width and height of each riser. The riser height should be a net fit, not tight

(Fig. 5). Measure from the new tread surface to under new tread nosing. It is important for aesthetics and strength that the new riser is installed under new tread nose and on top of new step surface. Do not allow new tread to move while installing riser. If necessary, the riser can be installed as you go or next day.

FIGURE 5



6. Top landing step nose

If the second story floor is floating, use our special design EZStairs™ TopStep nosing which is designed to be a top set to allow for expansion (Fig. 6). This will be glued with adhesive. It may also require using the appropriate supplied shim to adjust the height for thicker flooring. If the second floor is a glued floor the step nose can be flush mounted. The top riser should not be so tight as to push up the step nose. It should fit net not tight. If top landing has been squared off, you will need to use our nose fill piece. MDF Nose Fill can be ordered separately. This should be adhered to landing prior to step install with adhesive and secured with a couple of brad or finish nails. Please review the EZStairs™ TopStep Instructions for more information.

FIGURE 6



7. Open Ended Step

If an open-ended step install is needed, no special parts are required other than Mannington MSS 20 Seam Seal (to order call 877-845-9884 and use order code 186869)

First a nose must be made from a new EZStair™ tread. It will require cutting the tread into a desired nose, suggested size is 4". Use this nosing to miter your step nose to fit open step. Use MSS 20 Seam Sealer to join the miter pieces together to form your new step nose (Fig. 7a). Use the remaining tread to install on the step. Step landing and nosing can then be installed using adhesive as directed (Fig. 7b). A bead of seam sealer at the seam between nose and step landing can be added for extra strength. Immediately wipe any excess seam sealer with Mineral spirits on a clean cloth.



FIGURE 7A



FIGURE 7B

8. General Information

Cuts should be made using a table saw or miter saw with a quality carbide blade fine cut.

installed under new tread nose and on top of new step surface. Do not allow new tread to move while installing riser. If necessary, the riser can be installed as you go or next day.

Tools Required

- Table saw/circular saw
- Carbide tip fine saw blade
- Urethane Adhesive
- Tape measures
- Jigsaw fine carbide blade
- Rubber mallet
- Stair tread template tool (recommended)
- MSS 20 Standard Gloss Seam Sealer (if needed for customizing a wide or open end stair or to accommodate thicker flooring when installing Top Step using shims)
- Coverage Area: 400-600LF of seams per pint



9. Warranty

Phenix EZStairs™ Stair Treads have a limited 10 year residential wear warranty. For complete details, contact Phenix or an authorized Phenix dealer.

10. Maintenance

Sweep your floor regularly (at least once per week).

Prevent stains by wiping up spills promptly.

Spotcleaning can be done using the instructions on the cleaners. Using more than the recommended amount of cleaning solutions may leave a dulling film. Do not use soap or detergent products as they will leave a dulling film.



Phenix EZStairs™ TopStep Nosing

Phenix technical team has developed a special TopStep Nosing to support our EZStairs™ installation. This step nosing is an over existing nose install. If there is no existing nosing, our MDF nose filler piece can be adhered to an existing step/landing. Our new molding will give your stairs a complete look that matches our EZStairs™ treads. Our TopStep Nosing is designed to allow floating floors to float freely. Note: EZStairs™ TopStep Nosing has an underslung that should be top set per instructions below. EZStairs™ TopStep Nosing packaging includes three plastic shims. EZStairs TopStep™ Nosing can be used with all Microban® LVT products. You will need Mannington MSS 20 seam sealer and urethane adhesive. MSS 20 seam sealer can be ordered by calling 877-845-9884 using order code 186869.

1. Prepare existing top nose, remove any flooring, nails, staples etc.
2. Check that exiting nose is secure to landing, add screws if needed
3. Installed floating floor should allow a ¼ inch expansion to new nose underslung
4. Measure and cut EZStairs™ TopStep Nosing to fit over existing nose
5. Use a generous amount of MSS 20 seam sealer install proper shim to step nose
6. Apply a generous bead of adhesive to the nose top curve
7. Apply a bead on the subfloor or Step Nose flat area to adhere to landing or existing step
8. Be certain that EZStairs™ TopStep nosing is level
9. Once glued and leveled EZStairs™ TopStep Nosing can be weighted and or pre-drilled/hand nailed.
We find its best to drill a counter sink to avoid any blemish. Fill hole with a matching filler
10. Avoid traffic for 8 hrs. to allow adhesive to set, normal traffic after 24hrs.

Recommended Tools / Sundries

- Chop saw/fine carbide blade
- Drill & Drill bits or weights
- Matching filler
- Mannington MSS 20 seam sealer
- Adhesive
- If needed (MDF Nose filler piece 1"x47" pre-drill and nail/glue with Triple Stick)
- Provided Shim use
(Use Mannington MSS 20 seam sealer to adhere shim to nose as needed)

- 2.5 mm - no shim
- 4.5 mm - 1 shim
- 5.5 mm - 2 shims
- 8 mm - 3 shims