

ZIMMER BIOMET®  
**Sports Medicine**



**TRICERA® SYSTEM**  
B R O C H U R E

# Introducing Zimmer Biomet's **TRICERA SYSTEM**

The Tricera System is an advanced arthroscopy system that combines ablation/hemostasis, tissue resection, bone cutting, and fluid management into one proprietary system. This allows for surgeon control and quality tools for efficient procedures. The system is simple and intuitive with a quick setup.

The Tricera System's all-in-one architecture allows for efficiency and optimization by having all modalities work in harmony through a single console.

## **TRICERA FOOTSWITCH**

The Tricera Footswitch is designed to allow the surgeon to activate all system modes, pump, and flush the joint, with the familiarity of the standard yellow activate and blue coag pedals.



# FLUID MANAGEMENT

Veriflow™, Tricera's self-loading integrated inflow/outflow fluid management system, results in optimized fluid pressure designed to minimize spikes and troughs. This intuitive system contains a proprietary algorithm that measures the backpressure and joint pressure and adapts to any sheath/scope manufacturer. This provides excellent visualization with consistent joint distension, even when using tapered sheaths.

Exoflow™ is an outflow-only fluid management offering that provides surgeons the flexibility to use their existing inflow fluid management setup while automating outflow through Tricera devices. The outflow activates automatically with device use as well as on-demand when the flush mode is activated.



**Veriflow**



**Exoflow**



# TRICERA HANDPIECE

The Tricera Handpiece is the first ever integrated bipolar RF shaver handpiece. With the quick push of a button, the surgeons can move between modes, giving them control of the procedure. Surgeons can also adjust settings, joint flush and suction.

The handpiece has a device recognition feature and will automatically adjust the available modes and settings for each device attached.



## The 3-in-1 SHAVER™ revolutionizes arthroscopic surgery by providing surgeons with an all-in-one multifunctional device: a combined shaver/bone cutter and RF probe.

The Tricera System's 3-in-1 SHAVER combines soft tissue resection, bone cutting, and ablation/coagulation into a single device. Similar in tip geometry to a standard shaver, the 3-in-1 SHAVER offers multiple modalities as well as on-demand coagulation, designed to minimize intraoperative instrument changes for procedural efficiency.

The device is available in 5.0 mm and 4.2 mm sizes for optimal access and versatility in knee and shoulder arthroscopic procedures.



Ablation Mode



Resection Mode



Bone Cutting Mode



## 3-in-1 SHAVER Features:

### Streamlined

---

Perform ablation/coagulation, soft tissue resection, and bone cutting with a single device

### Speed

---

Designed to allow for fast bone cutting and tissue resection combined into one device

### Optimization

---

All modalities controlled by a single console for performance and efficiency

### Access

---

5.0 mm and 4.2 mm available and fits through most 5.5 mm cannulas

### Efficient

---

All-in-one device designed to minimize intraoperative instrument exchanges for overall efficiency

### Versatility

---

Change between modes at the touch of a button or footpedal

### Coagulation

---

On-demand coagulation from any mode for optimal visualization

### Visualization

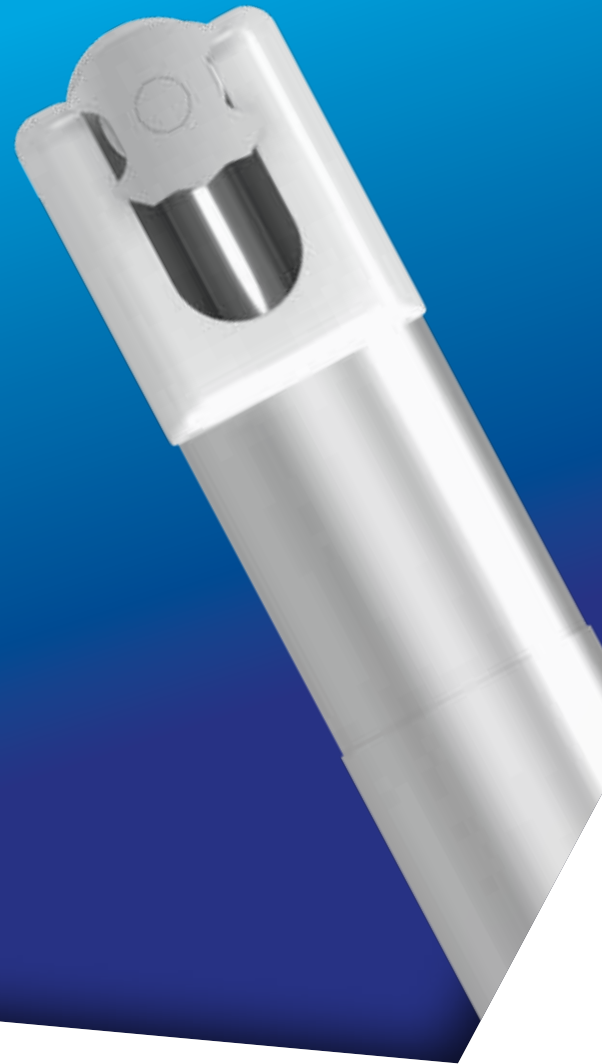
---

Veriflow self-monitoring fluid management system maintains accurate pressure and automatic flow

# The Tricera Dynablator<sup>®</sup> is an innovative device that combines a reciprocating electrode with plasma resection and suction for efficient tissue removal.

Dynablator removes tissue via Dynamic Ablation™, a unique and proprietary feature of the device. Dynamic Ablation involves reciprocating a smaller focused electrode 50 times per second, generating a large, dense plasma field. The Dynamic Ablation combination of the reciprocating electrode and a large suction channel provides aggressive bulk tissue removal with increased visibility and low joint fluid temperatures.

The Dynablator can be used in static mode if a more conservative treatment is required.



## Dynablator Features:

### Innovation

Reciprocating electrode ablates/coagulates and simultaneously resects soft tissue

### Resection

Aggressive bulk tissue resection removes tissue with efficiency and speed.

### Efficiency

Dynamic Ablation, combined with a large suction channel, provides efficient tissue removal designed to minimize clogs and maximize visualization of the surgical field

### Integration

Integrated Veriflow fluid management, combined with large suction channel, provides excellent visualization and is designed for low joint fluid temperatures

### Functionality

Can be used in reciprocating mode or changed to static mode for a more customized treatment

### Compatibility

4.4 mm Dynablator shaft diameter is compatible with 5.5 mm cannulas

## Ordering Information:

### Tricera System

Product	Component's Name	Part Number
	Tricera Controller, including controller, foot switch and power cord	R-10001
	Tricera Handpiece, autoclavable	R-10023

### Fluid Management System

All systems are sterile packed, single use and are coming in a box of 6.

Product	Component's Name	Part Number
	Veriflow	R-10003
	Exoflow	R-10017

### Shaver, Burrs, and RF

All shaver, burrs and RFs are sterile packed, single use and are coming in a box of 4.

Product	Component's Name	Part Number
	Dynablator	R-10005
	3-in-1 Shaver 4.2 mm	R-10008
	3-in-1 Shaver 5.0 mm	R-10014
	Standard Burr 5.0 mm	R-10021
	Standard Shaver 3.4 mm	R-10012
	Curved Standard Shaver 3.4 mm	R-10024

All content herein is protected by copyright, trademarks and other intellectual property rights, as applicable, owned by or licensed to Zimmer Biomet or its affiliates unless otherwise indicated, and must not be redistributed, duplicated or disclosed, in whole or in part, without the express written consent of Zimmer Biomet.

This material is intended for health care professionals. Distribution to any other recipient is prohibited.

For indications, contraindications, warnings, precautions, potential adverse effects and patient counseling information, see the package insert or contact your local representative; visit [www.zimmerbiomet.com](http://www.zimmerbiomet.com) for additional product information.

Not for distribution in France.

Check for country product clearances and reference product specific instructions for use.

Relign, Dynablator, Veriflow, Exoflow, and Tricera are trademarks of RELIGN Corporation; some trademarks are registered in the US.

©2021 Zimmer Biomet.

