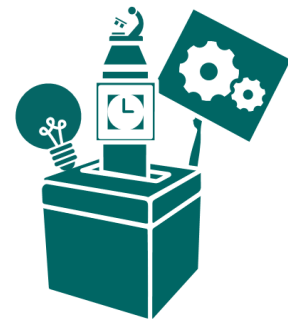


Methodology

This 16th Audit report is based on a public opinion survey conducted by Ipsos MORI with a representative quota sample of 1,198 adults aged 18+ across Great Britain. The research was carried out face-to-face in people's homes as part of Ipsos MORI's omnibus survey between 30 November and 12 December 2018.

- Booster samples were included to make comparisons between England, Scotland and Wales, and between the white and BME populations, more statistically reliable. A total of 180 BME, 189 Scottish and 86 Welsh interviews were held.
- All results are subject to sampling tolerances. This means that not all differences are statistically significant. The people in the survey are only samples of the 'total' population of Great Britain, so we cannot be certain that the figures obtained are exactly those we would have if everybody in Britain had been interviewed (the 'true' values). However, the variation between the sample results and the true values can be predicted from the knowledge of the size of the samples on which the results are based and the number of times that a particular answer is given. The confidence with which this prediction can be made is usually 95% - that is, the chances are 95 in 100 that the 'true' value will fall within a specified range. The Audit sample size has a margin of up to +/- 3.6% at the 95% confidence level. (This allows for the 'design effect': because the data is weighted, the effective sample size is smaller than the real sample size.) So if 50% of people give a particular response we can be sure (19 times out of 20) that the actual figure would be between 46.4% and 53.6%.
- Where percentages do not add up to exactly 100% this may be due to computer rounding or because multiple answers were permitted for a question. Some graphs and tables may also not add up to 100% if 'don't knows' or refused responses have not been included. Data have been analysed by rounding weighted counts of responses to the nearest whole number before calculating percentages. As a result there may in some cases be a difference of one percentage point between findings reported here and those in previous Audit studies.



Weighting

As in previous Audit waves, the data has been weighted to match the population profile by Ipsos MORI. These weights are regularly updated to incorporate the most recent national data. We used similar weights to those used last year in APE 15, but with updated figures where available.

As the Audit is a tracking study, targets are updated to reflect population change where necessary but the changes in the weighting scheme are kept to a minimum to allow for longitudinal comparability. However, elements of the sample design (the inclusion of boosters) and other factors sometimes necessitate adding extra controls to prevent biases arising in the figures.

| Weight | Source |
|--------------------------|---|
| (1) Age by sex | Office of National Statistics Mid-Year Estimates 2015 |
| (2) Work status by sex | Labour Force Survey Quarterly Supplement, Dec 2016- February 2017 |
| (3) Social grade | National Readership Survey January 2016-December 2016 |
| (4) Region | Office of National Statistics Mid-Year Estimates 2015 |
| (5) Car in household | Census 2011 |
| (6) Ethnic group | Census 2011 |
| (7) Tenure | National Readership Survey January 2016-December 2016 |
| (8) Education attainment | Census 2011 |

Topline findings

- An asterisk (*) indicates a finding of less than 0.5% but greater than zero.
- A dash (-) indicates that nobody chose a response.
- N/A indicates that the question was asked but the particular response option was not included that year.

| Q1 | | How likely would you be to vote in an immediate General Election, on a scale of 1 to 10, where 10 means you would be absolutely certain to vote, and 1 means that you would be absolutely certain not to vote? | | | | | | | | | | | | | | | |
|------------|--|--|-----|-----|-----|-----|-----|-----|-----|-----|-----|-----|-----|-----|-----|-----|-----|
| | | APE | APE | APE | APE | APE | APE | APE | APE | APE | APE | APE | APE | APE | APE | APE | APE |
| | | 1 | 2 | 3 | 4 | 5 | 6 | 7 | 8 | 9 | 10 | 11 | 12 | 13 | 14 | 15 | 16 |
| | | % | % | % | % | % | % | % | % | % | % | % | % | % | % | % | % |
| 10 | | 51 | 52 | 55 | 55 | 53 | 53 | 54 | 58 | 48 | 41 | 49 | 49 | 59 | 59 | 62 | 61 |
| 9 | | 6 | 6 | 7 | 6 | 4 | 5 | 6 | 4 | 4 | 4 | 6 | 4 | 4 | 4 | 5 | 6 |
| 8 | | 8 | 8 | 7 | 7 | 7 | 8 | 7 | 7 | 5 | 7 | 7 | 6 | 7 | 6 | 6 | 4 |
| 7 | | 5 | 5 | 7 | 6 | 5 | 6 | 4 | 4 | 4 | 4 | 5 | 5 | 5 | 4 | 3 | 4 |
| 6 | | 3 | 3 | 2 | 3 | 3 | 2 | 3 | 3 | 3 | 5 | 4 | 5 | 4 | 2 | 3 | 2 |
| 5 | | 7 | 7 | 6 | 5 | 8 | 7 | 7 | 6 | 8 | 9 | 8 | 8 | 5 | 7 | 8 | 5 |
| 4 | | 2 | 2 | 1 | 1 | 1 | 2 | 2 | 1 | 2 | 2 | 2 | 2 | 1 | 1 | 1 | 1 |
| 3 | | 2 | 3 | 2 | 2 | 2 | 2 | 2 | 2 | 2 | 5 | 2 | 3 | 2 | 2 | 2 | 2 |
| 2 | | 2 | 2 | 1 | 2 | 2 | 1 | 2 | 1 | 3 | 3 | 3 | 2 | 1 | 1 | 1 | 1 |
| 1 | | 11 | 11 | 10 | 11 | 10 | 11 | 12 | 10 | 16 | 20 | 11 | 12 | 10 | 11 | 8 | 12 |
| Refused | | 0 | 0 | 0 | 1 | * | * | * | * | 2 | 1 | 0 | 1 | 0 | 0 | 0 | - |
| Don't know | | 2 | 1 | 1 | 0 | 3 | 2 | 2 | 2 | 3 | * | 2 | 3 | 2 | 1 | 2 | 2 |



| Q2 | In the last 12 months have you done any of the following to influence decisions, laws or policies? | | | | | | |
|---|--|-------------|-------------|-------------|-------------|-------------|-------------|
| | APE 10 % | APE 11 % | APE 12 % | APE 13 % | APE 14 % | APE 15 % | APE 16 % |
| Donated money or paid a membership fee to a charity or campaigning organisation | 20 | 20 | 13 | 24 | 19 | 23 | 17 |
| Voted in an election | 27 | 18 | 27 | 47 | 57 | 65 | 34 |
| Created or signed a paper petition | 8 | 16 | 9 | 8 | 11 | 10 | 8 |
| Created or signed an e-petition | 9 | 14 | 14 | 18 | 23 | 24 | 22 |
| Contacted a local councillor or MP/MSP/Welsh Assembly Member | 8 | 12 | 12 | 12 | 11 | 12 | 12 |
| Boycotted certain products for political, ethical or environmental reasons | 6 | 10 | 9 | 11 | 10 | 10 | 11 |
| Taken an active part in a campaign | 2 | 7 | 4 | 6 | 5 | 5 | 5 |
| Contributed to a discussion or campaign online or on social media | 3 | 6 | 7 | 10 | 9 | 10 | 10 |
| Taken part in a public consultation | 4 | 6 | 5 | 7 | 6 | 6 | 5 |
| Contacted the media | 2 | 3 | 3 | 4 | 3 | 4 | 3 |
| Attended political meetings | 2 | 3 | 3 | 5 | 3 | 3 | 3 |
| Donated money or paid a membership fee to a political party | 1 | 2 | 3 | 5 | 5 | 5 | 5 |
| Taken part in a demonstration, picket, or march | 1 | 2 | 3 | 4 | 3 | 4 | 4 |
| None of these | 50 | 52 | 55 | 39 | 31 | 25 | 39 |
| Don't know | 0 | * | 1 | 1 | * | * | * |

Which of the following would you be prepared to do if you felt strongly enough about an issue?

| | APE 10 % | APE 11 % | APE 12 % | APE 13 % | APE 14 % | APE 15 % | APE 16 % |
|---|----------------|----------------|----------------|----------------|----------------|----------------|----------------|
| Contact a local councillor or MP/MSP/Welsh Assembly Member | 41 | 51 | 33 | 52 | 42 | 43 | 37 |
| Vote in an election | 42 | 46 | 35 | 55 | 61 | 70 | 58 |
| Create or sign a paper petition | 34 | 43 | 29 | 35 | 34 | 37 | 29 |
| Create or sign an e-petition | 25 | 31 | 23 | 34 | 36 | 38 | 34 |
| Boycott certain products for political, ethical or environmental reasons | 14 | 25 | 15 | 24 | 25 | 27 | 23 |
| Contact the media | 16 | 22 | 17 | 20 | 17 | 19 | 15 |
| Take an active part in a campaign | 14 | 22 | 15 | 21 | 19 | 18 | 18 |
| Donate money or pay a membership fee to a charity or campaigning organisation | 17 | 21 | 14 | 22 | 22 | 26 | 20 |
| Take part in a public consultation | 14 | 21 | 16 | 22 | 22 | 25 | 22 |
| Take part in a demonstration, picket, or march | 10 | 16 | 14 | 16 | 17 | 19 | 18 |
| Attend political meetings | 10 | 15 | 15 | 15 | 17 | 17 | 17 |
| Contribute to a discussion or campaign online or on social media | 8 | 14 | 14 | 19 | 19 | 21 | 16 |
| Donate money or pay a membership fee to a political party | 5 | 7 | 8 | 10 | 11 | 11 | 11 |
| None of these | 22 | 20 | 29 | 19 | 18 | 12 | 22 |
| Don't know | N/A | 1 | 3 | 1 | 1 | 1 | * |

Q4 How interested would you say you are in politics?

| | | Very interested | Fairly interested | Not very interested | Not at all interested | Don't know | Very /fairly interested | Not very/not at all | Net interested |
|---------------|----------|-----------------|-------------------|---------------------|-----------------------|------------|-------------------------|---------------------|----------------|
| APE 1 | % | 11 | 39 | 32 | 18 | * | 50 | 50 | 0 |
| APE 2 | % | 13 | 40 | 28 | 19 | * | 53 | 47 | +6 |
| APE 3 | % | 13 | 43 | 30 | 14 | * | 56 | 43 | +13 |
| APE 4 | % | 13 | 41 | 27 | 19 | * | 54 | 46 | +8 |
| APE 5 | % | 13 | 38 | 28 | 19 | 1 | 51 | 47 | +4 |
| APE 6 | % | 12 | 40 | 30 | 17 | * | 52 | 47 | +5 |
| APE 7 | % | 14 | 39 | 29 | 18 | 1 | 53 | 47 | +6 |
| APE 8 | % | 16 | 42 | 26 | 17 | * | 58 | 43 | +15 |
| APE 9 | % | 8 | 34 | 33 | 24 | 1 | 42 | 57 | -15 |
| APE 10 | % | 10 | 32 | 32 | 26 | * | 42 | 58 | -16 |
| APE 11 | % | 11 | 39 | 31 | 20 | * | 50 | 51 | -1 |
| APE 12 | % | 12 | 36 | 33 | 18 | 1 | 49 | 51 | -2 |
| APE 13 | % | 18 | 39 | 25 | 18 | * | 57 | 43 | +14 |
| APE 14 | % | 17 | 36 | 27 | 19 | 0 | 53 | 47 | +7 |
| APE 15 | % | 16 | 41 | 25 | 18 | 0 | 57 | 43 | +14 |
| APE 16 | % | 18 | 35 | 21 | 26 | - | 53 | 47 | +6 |



Q5 How much, if anything, do you feel you know about...

| | | A great deal | A fair amount | Not very much | Nothing at all | Don't know | A great deal/fair amount | Not very much/not at all |
|------------------------------|---|--------------|---------------|---------------|----------------|------------|--------------------------|--------------------------|
| ...Politics? | | | | | | | | |
| APE 1 | % | 3 | 39 | 45 | 12 | 1 | 42 | 57 |
| APE 2 | % | 4 | 41 | 44 | 10 | * | 45 | 54 |
| APE 3 | % | 4 | 35 | 51 | 9 | * | 39 | 60 |
| APE 4 | % | 6 | 43 | 40 | 11 | * | 49 | 51 |
| APE 5 | % | 4 | 40 | 43 | 12 | * | 44 | 55 |
| APE 6 | % | 5 | 43 | 42 | 9 | 1 | 48 | 51 |
| APE 7 | % | 6 | 45 | 40 | 9 | * | 51 | 49 |
| APE 8 | % | 7 | 46 | 36 | 11 | * | 53 | 47 |
| APE 9 | % | 4 | 40 | 41 | 15 | 1 | 44 | 56 |
| APE 10 | % | 4 | 38 | 42 | 16 | * | 42 | 58 |
| APE 11 | % | 6 | 44 | 38 | 12 | * | 50 | 50 |
| APE 12 | % | 5 | 42 | 39 | 14 | 1 | 47 | 53 |
| APE 13 | % | 8 | 47 | 32 | 12 | * | 55 | 44 |
| APE 14 | % | 8 | 41 | 38 | 13 | * | 49 | 50 |
| APE 15 | % | 9 | 43 | 37 | 11 | * | 52 | 48 |
| APE 16 | % | 9 | 42 | 32 | 18 | - | 51 | 49 |
| ...The UK Parliament? | | | | | | | | |
| APE 1* | % | 3 | 30 | 50 | 17 | 1 | 33 | 67 |
| APE 4* | % | 4 | 34 | 46 | 14 | 1 | 38 | 60 |
| APE 7* | % | 4 | 33 | 47 | 15 | 1 | 37 | 62 |
| APE 8 | % | 5 | 39 | 43 | 13 | * | 44 | 56 |
| APE 9 | % | 4 | 36 | 43 | 16 | 1 | 40 | 59 |
| APE 10 | % | 4 | 33 | 45 | 17 | * | 37 | 62 |
| APE 11 | % | 5 | 43 | 39 | 13 | * | 48 | 52 |
| APE 12 | % | 6 | 41 | 39 | 13 | 1 | 47 | 52 |
| APE 13 | % | 8 | 44 | 34 | 13 | * | 52 | 47 |
| APE 14 | % | 7 | 38 | 41 | 14 | * | 45 | 55 |
| APE 15 | % | 7 | 43 | 38 | 13 | * | 49 | 51 |
| APE 16 | % | 8 | 38 | 34 | 20 | - | 46 | 54 |

Core indicator:
knowledge of politics



Core indicator:
knowledge of Parliament



*Asked as 'The Westminster Parliament'; comparisons with later waves should therefore be seen as indicative.

Q6

Which of these statements best describes your opinion on the present system of governing Britain?

| | APE 1 % | APE 2 % | APE 3 % | APE 4 % | APE 5 % | APE 6 % | APE 7 % | APE 8 % | APE 9 % | APE 10 % | APE 11 % | APE 12 % | APE 13 % | APE 14 % | APE 15 % | APE 16 % |
|---|---------|---------|---------|---------|---------|---------|---------|---------|---------|----------|----------|----------|----------|----------|----------|----------|
| Works extremely well and could not be improved | 2 | 2 | 1 | 2 | 2 | 2 | 1 | 1 | 2 | 2 | 3 | 1 | 2 | 3 | 2 | 2 |
| Could be improved in small ways but mainly works well | 34 | 32 | 33 | 31 | 30 | 31 | 27 | 30 | 22 | 25 | 30 | 25 | 31 | 29 | 27 | 23 |
| Could be improved quite a lot | 42 | 45 | 41 | 40 | 38 | 40 | 42 | 39 | 41 | 41 | 41 | 41 | 40 | 41 | 38 | 35 |
| Needs a great deal of improvement | 18 | 18 | 21 | 21 | 24 | 24 | 27 | 25 | 26 | 27 | 23 | 27 | 23 | 24 | 29 | 37 |
| Don't know | 4 | 3 | 4 | 6 | 6 | 3 | 4 | 5 | 10 | 6 | 3 | 6 | 4 | 3 | 4 | 3 |
| <i>Could not be improved / improved in small ways</i> | 36 | 34 | 34 | 33 | 32 | 33 | 28 | 31 | 24 | 27 | 33 | 26 | 33 | 31 | 29 | 25 |
| <i>Could be improved quite a lot / a great deal</i> | 60 | 63 | 61 | 61 | 62 | 64 | 69 | 64 | 67 | 68 | 64 | 68 | 63 | 65 | 67 | 72 |



Q7

To what extent do you agree or disagree with the following statement: When people like me get involved in politics, they really can change the way that the UK is run.

| | | Strongly agree | Tend to agree | Neither | Tend to disagree | Strongly disagree | Don't know | Agree | Disagree |
|---------------|----------|----------------|---------------|-----------|------------------|-------------------|------------|-----------|-----------|
| APE 1 | % | 6 | 31 | 20 | 30 | 10 | 4 | 37 | 40 |
| APE 2 | % | 7 | 30 | 20 | 31 | 10 | 2 | 37 | 41 |
| APE 3 | % | 6 | 27 | 20 | 31 | 13 | 3 | 33 | 44 |
| APE 4 | % | 5 | 28 | 24 | 31 | 8 | 4 | 33 | 39 |
| APE 5 | % | 4 | 27 | 23 | 29 | 13 | 3 | 31 | 42 |
| APE 6 | % | 3 | 28 | 22 | 32 | 13 | 2 | 31 | 45 |
| APE 7 | % | 5 | 32 | 19 | 30 | 11 | 4 | 37 | 41 |
| APE 8 | % | 4 | 26 | 23 | 31 | 13 | 3 | 30 | 44 |
| APE 9 | % | 7 | 25 | 28 | 22 | 14 | 5 | 32 | 36 |
| APE 10 | % | 7 | 25 | 29 | 24 | 13 | 2 | 32 | 37 |
| APE 11 | % | 5 | 26 | 27 | 27 | 15 | 2 | 31 | 42 |
| APE 12 | % | 4 | 27 | 29 | 23 | 12 | 5 | 32 | 35 |
| APE 13 | % | 6 | 29 | 24 | 27 | 12 | 2 | 35 | 39 |
| APE 14 | % | 5 | 27 | 28 | 27 | 11 | 1 | 32 | 38 |
| APE 15 | % | 6 | 28 | 29 | 24 | 12 | 1 | 34 | 36 |
| APE 16 | % | 7 | 24 | 25 | 23 | 18 | 1 | 32 | 42 |



Q8

To what extent do you agree or disagree that: Important questions should be determined by referendums more often than today?

| | APE 9 | APE 13 | APE 14 | APE 15 | APE 16 |
|--|-------|--------|--------|--------|--------|
| | % | % | % | % | % |
| Strongly agree | 33 | 33 | 25 | 20 | 23 |
| Partly agree | 39 | 42 | 36 | 38 | 33 |
| Partly disagree | 7 | 11 | 20 | 20 | 17 |
| Strongly disagree | 3 | 6 | 14 | 16 | 22 |
| Not sure what a referendum is (spontaneous response) | 7 | 2 | 1 | 1 | 2 |
| Don't know | 10 | 6 | 4 | 5 | 4 |
| Agree | 72 | 76 | 61 | 58 | 55 |
| Disagree | 11 | 17 | 35 | 36 | 39 |

Q9

Would you call yourself a very strong, fairly strong, not very strong, or not a supporter at all of any political party?

| | Very strong | Fairly strong | Not very strong | Not a supporter | Don't know | Refused | Strong supporter | Weak supporter |
|----------|-------------|---------------|-----------------|-----------------|------------|---------|------------------|----------------|
| APE 4 % | 6 | 30 | 38 | 24 | 1 | * | 36 | 62 |
| APE 11 % | 7 | 23 | 36 | 33 | * | * | 30 | 69 |
| APE 12 % | 8 | 22 | 35 | 32 | 2 | 1 | 30 | 67 |
| APE 13 % | 8 | 33 | 33 | 25 | 1 | 0 | 41 | 58 |
| APE 14 % | 7 | 24 | 37 | 31 | * | 0 | 31 | 68 |
| APE 15 % | 8 | 30 | 34 | 28 | 1 | 0 | 37 | 62 |
| APE 16 % | 9 | 25 | 32 | 33 | 1 | - | 34 | 65 |

Q10 How much influence, if any, do you feel you have over decision making in...

| | | | A great deal | Some | Not very much | None at all | Don't know | A great deal/some | Not very much/not at all |
|----------------------------|---------------|----------|--------------|-----------|---------------|-------------|------------|-------------------|--------------------------|
| ...your local area? | APE 6 | % | 1 | 24 | 41 | 32 | 2 | 25 | 73 |
| | APE 9 | % | 2 | 22 | 39 | 32 | 5 | 24 | 72 |
| | APE 10 | % | 2 | 24 | 40 | 33 | 2 | 25 | 73 |
| | APE 11 | % | 2 | 24 | 44 | 29 | 1 | 26 | 73 |
| | APE 12 | % | 1 | 19 | 44 | 33 | 4 | 20 | 76 |
| | APE 13 | % | 2 | 23 | 39 | 34 | 2 | 25 | 73 |
| | APE 14 | % | 1 | 22 | 40 | 37 | 1 | 23 | 76 |
| | APE 15 | % | 1 | 26 | 39 | 33 | 1 | 27 | 72 |
| | APE 16 | % | 2 | 23 | 33 | 42 | 1 | 25 | 74 |
| ...the country as a whole? | APE 6 | % | * | 14 | 44 | 41 | 1 | 14 | 85 |
| | APE 9 | % | * | 12 | 40 | 43 | 5 | 13 | 82 |
| | APE 10 | % | 1 | 15 | 43 | 40 | 2 | 16 | 82 |
| | APE 11 | % | 1 | 13 | 46 | 40 | 1 | 14 | 85 |
| | APE 12 | % | 1 | 16 | 38 | 41 | 4 | 17 | 79 |
| | APE 13 | % | 1 | 12 | 42 | 43 | 1 | 13 | 86 |
| | APE 14 | % | 1 | 15 | 41 | 42 | * | 16 | 83 |
| | APE 15 | % | 1 | 16 | 42 | 40 | 1 | 16 | 82 |
| | APE 16 | % | 1 | 14 | 36 | 47 | 1 | 16 | 83 |

| Q11 | | To what extent, if at all, would you <u>like</u> to be involved in decision making in... | | | | | | |
|----------------------------|-----------------|--|-----------------|-------------------|---------------------|------------|----------------------|---|
| | | Very involved | Fairly involved | Not very involved | Not at all involved | Don't know | Very/fairly involved | Not very involved/ not involved at all |
| ...your local area? | APE 6 % | 5 | 43 | 32 | 18 | 2 | 48 | 50 |
| | APE 8 % | 5 | 38 | 38 | 17 | 2 | 43 | 55 |
| | APE 9 % | 5 | 33 | 33 | 25 | 4 | 38 | 58 |
| | APE 10 % | 8 | 39 | 29 | 22 | 1 | 48 | 51 |
| | APE 11 % | 6 | 37 | 35 | 21 | 1 | 42 | 57 |
| | APE 12 % | 7 | 31 | 36 | 22 | 4 | 38 | 58 |
| | APE 13 % | 11 | 35 | 29 | 23 | 1 | 46 | 53 |
| | APE 14 % | 9 | 37 | 30 | 24 | * | 46 | 53 |
| | APE 15 % | 7 | 41 | 30 | 22 | 1 | 48 | 51 |
| | APE 16 % | 9 | 32 | 26 | 32 | 1 | 41 | 58 |
| ...the country as a whole? | APE 6 % | 5 | 38 | 33 | 22 | 2 | 43 | 55 |
| | APE 8 % | 8 | 34 | 38 | 19 | 2 | 41 | 57 |
| | APE 9 % | 6 | 27 | 34 | 30 | 3 | 33 | 63 |
| | APE 10 % | 7 | 35 | 32 | 25 | 2 | 42 | 57 |
| | APE 11 % | 6 | 32 | 37 | 25 | 1 | 37 | 62 |
| | APE 12 % | 8 | 28 | 34 | 26 | 4 | 37 | 60 |
| | APE 13 % | 9 | 32 | 30 | 27 | 1 | 42 | 57 |
| | APE 14 % | 8 | 33 | 33 | 25 | * | 41 | 58 |
| | APE 15 % | 7 | 33 | 33 | 26 | 1 | 40 | 59 |
| | APE 16 % | 8 | 29 | 28 | 35 | 1 | 37 | 62 |

Q12 In the last 12 months have you done any of the following?

| | APE | APE |
|---|-----|-----|
| | 15 | 16 |
| | % | % |
| Visited the website or social media account of a politician or political party | 19 | 16 |
| Visited other politically related websites or social media accounts | 12 | 13 |
| Watched politically related video content online (e.g., Facebook Live, YouTube) | 29 | 28 |
| Contacted a politician or political party on social media | 5 | 8 |
| Followed a politician or political party on social media | 12 | 13 |
| Contributed to a political discussion on social media | 10 | 11 |
| Shared something politically related on social media, such as news story, article or your own political statement | 17 | 15 |
| Created or signed an e-petition | 28 | 28 |
| Actively taken part in a group on social media that shares an interest in an issue or cause | N/A | 10 |
| Changed your profile picture on a social media account to show your support for a political or social issue | N/A | 5 |
| Used hashtags related to a political or social issue | N/A | 6 |
| Encouraged others on social media to act on a political or social issue outside of social media itself e.g. in person/telephone campaigning, protest etc. | N/A | 8 |
| None of these | 48 | 53 |
| Don't know | * | * |

Q13

Now, thinking about the people you talk with, whether in person, over the phone or on social media, how often, if at all, do you discuss government and politics with others?

| | APE 16 |
|---------------------|---------------|
| | % |
| Nearly every day | 10 |
| A few times a week | 22 |
| A few times a month | 19 |
| Less often | 19 |
| Never | 30 |
| Don't know | * |
| Refused | - |

Q14

Which of the following best describes your opinion of the system of government and the people in decision-making positions in Britain these days?

| | APE 16 |
|---|---------------|
| | % |
| The system and the people work well | 7 |
| The system of government is good but the people making decisions are not up to the job | 29 |
| The people in power are good but the system prevents them from making the right decisions | 15 |
| Neither the system nor the people making the decisions are good enough | 38 |
| Other | 6 |
| Don't know | 4 |

Q15

How much confidence, if any, do you have in each of the following to act in the best interests of the public?

| | | Complete confidence | A fair amount of confidence | Not very much confidence | No confidence at all | Don't know | Refused | Complete/ fair amount of confidence | Not very much/no confidence |
|--|---|---------------------|-----------------------------|--------------------------|----------------------|------------|---------|-------------------------------------|-----------------------------|
| The military/ armed forces | % | 32 | 42 | 15 | 10 | 1 | - | 74 | 25 |
| Banks | % | 6 | 30 | 34 | 29 | 1 | - | 36 | 63 |
| Judges/ courts | % | 14 | 48 | 23 | 13 | 1 | - | 62 | 37 |
| Big business | % | 3 | 23 | 40 | 32 | 2 | - | 26 | 72 |
| Newspapers | % | 3 | 25 | 39 | 31 | 1 | - | 29 | 70 |
| Television broadcasters e.g. the BBC, ITV, etc | % | 6 | 40 | 33 | 19 | 1 | - | 47 | 52 |
| The Government | % | 4 | 29 | 35 | 31 | 1 | - | 33 | 66 |
| Political parties | % | 3 | 26 | 44 | 26 | 1 | - | 29 | 70 |
| Members of the House of Commons (MPs) | % | 4 | 30 | 38 | 28 | 1 | - | 34 | 66 |
| Members of the House of Lords (Peers) | % | 4 | 29 | 34 | 31 | 2 | - | 33 | 65 |
| Civil servants | % | 7 | 42 | 33 | 16 | 2 | - | 49 | 49 |
| Trade unions | % | 7 | 36 | 35 | 20 | 2 | - | 43 | 54 |
| Social media companies | % | 3 | 17 | 34 | 44 | 2 | - | 20 | 78 |
| Local government (councils) | % | 6 | 38 | 35 | 20 | 1 | - | 44 | 55 |
| Scottish Government | % | 17 | 32 | 19 | 31 | - | - | 50 | 50 |
| <i>Base: 189 Scottish 18+</i> | | | | | | | | | |
| Welsh Assembly | % | 2 | 26 | 35 | 28 | 8 | - | 28 | 64 |
| <i>Base: 86 Welsh 18+</i> | | | | | | | | | |

Q16a-d I am going to show you pairs of statements, even if neither is exactly right, please tell me where the **FIRST** statement or the **SECOND** statement comes closer to your own views.

| | | APE 16 % |
|------|--|-------------|
| Q16a | I prefer politicians who make compromises with people they disagree with | 48 |
| | I prefer politicians who stick to their positions | 45 |
| | Neither | 3 |
| | Don't know | 4 |
| Q16b | There are clear solutions to most big issues facing the country today | 29 |
| | Most big issues facing the country today don't have clear solutions | 66 |
| | Neither | 2 |
| | Don't know | 3 |
| Q16c | Many of the country's problems could be dealt with more effectively if the government didn't have to worry so much about votes in Parliament | 42 |
| | It would be risky to give the government more power to deal directly with many of the country's problems | 50 |
| | Neither | 3 |
| | Don't know | 5 |
| Q16d | We should consider electing parties or leaders with radical ideas for change who haven't been in power before | 43 |
| | At a time like the present, we should stick with political parties and leaders who have been in power before | 47 |
| | Neither | 5 |
| | Don't know | 4 |

| Q17 | | To what extent, if at all, do you agree or disagree with the following statements.... | | | | | | | | |
|--|---|---|----------------|----------------------------|-------------------|-------------------|------------|---------|-------|----------|
| | | Strongly agree | Somewhat agree | Neither agree nor disagree | Somewhat disagree | Strongly disagree | Don't know | Refused | Agree | Disagree |
| Britain is in decline | % | 24 | 32 | 23 | 14 | 7 | * | - | 56 | 21 |
| Britain's system of government is rigged to advantage the rich and powerful | % | 32 | 31 | 21 | 11 | 6 | * | - | 63 | 16 |
| The main parties and politicians don't care about people like me | % | 20 | 30 | 29 | 16 | 5 | * | - | 50 | 21 |
| Politicians should be able to say what's on their minds regardless of what anyone else thinks about their views | % | 30 | 37 | 20 | 8 | 5 | * | - | 66 | 13 |
| Britain needs a strong leader willing to break the rules | % | 27 | 27 | 23 | 15 | 7 | * | - | 54 | 23 |
| The main political parties are so divided within themselves that they cannot serve the best interests of the country | % | 41 | 35 | 16 | 5 | 3 | * | - | 75 | 8 |

Q18 How much confidence, if any, do you have in each of the following when handling the issue of Britain's exit from the European Union?

| | | Complete confidence | A fair amount of confidence | Not very much confidence | No confidence at all | Don't know | Refused | Complete/fair amount of confidence | Not very much/no confidence |
|--|---|---------------------|-----------------------------|--------------------------|----------------------|------------|---------|------------------------------------|-----------------------------|
| The Government | % | 3 | 23 | 37 | 36 | 1 | - | 26 | 73 |
| Political parties | % | 1 | 18 | 47 | 32 | 1 | - | 20 | 79 |
| Members of the House of Commons (MPs) | % | 2 | 23 | 44 | 30 | 1 | - | 25 | 73 |
| Members of the House of Lords (Peers) | % | 2 | 26 | 40 | 30 | 2 | - | 28 | 70 |
| Judges/ courts | % | 10 | 39 | 30 | 18 | 3 | - | 49 | 49 |
| Civil servants | % | 5 | 35 | 38 | 20 | 2 | - | 40 | 58 |
| Scottish Government <i>Base: 189 Scottish 18+</i> | % | 13 | 28 | 30 | 28 | 1 | - | 41 | 58 |
| Welsh Assembly <i>Base: 86 Welsh 18+</i> | % | 1 | 23 | 36 | 30 | 9 | - | 24 | 67 |

Q19

And when thinking about how each of the following has handled Britain's exit from the European Union, has this given you more or less confidence in them to act in the public's best interest more generally?

| | | Given me much more confidence | Given me a little more confidence | Makes no difference | Given me a little less confidence | Given me a lot less confidence | Don't know | Refused | Much more/ little more confidence | A lot less/ little less confidence |
|--|---|-------------------------------|-----------------------------------|---------------------|-----------------------------------|--------------------------------|------------|---------|-----------------------------------|------------------------------------|
| The Government | % | 2 | 10 | 27 | 26 | 34 | 1 | - | 13 | 60 |
| Political parties | % | 1 | 8 | 29 | 29 | 32 | 1 | - | 9 | 60 |
| Members of the House of Commons (MPs) | % | 1 | 10 | 30 | 26 | 31 | 1 | - | 11 | 57 |
| Members of the House of Lords (Peers) | % | 1 | 13 | 35 | 23 | 27 | 2 | - | 14 | 50 |
| Judges/ courts | % | 3 | 15 | 45 | 19 | 16 | 2 | - | 18 | 35 |
| Civil servants | % | 1 | 14 | 43 | 22 | 18 | 2 | - | 15 | 41 |
| Scottish Government <i>Base: 189 Scottish 18+</i> | % | 11 | 12 | 33 | 19 | 25 | 1 | - | 22 | 44 |
| Welsh Assembly <i>Base: 86 Welsh 18+</i> | % | - | 11 | 48 | 19 | 19 | 3 | - | 11 | 38 |