



Certificate of Conformity

T6tCertification Body:



SAI Global Certification Services Pty Limited

(ACN 108 716 669) Trading as "SAI Global"

JAS-ANZ Accreditation No. Z1440295AS

Address: 680 George St, Sydney, NSW 2000

Website: www.saiglobal.com

Certificate Holder:



James Hardie Australia Pty Ltd
10 Colquhoun St, Rosehill NSW 2142

Ph: 131 103

www.jameshardie.com

Certificate number: CM20135

THIS TO CERTIFY THAT

Hardie™ Smart Boundary Wall System

Type and/or use of product:

The Hardie™ Smart Boundary Wall System is intended for use as an external wall in Class 1 and Class 10a buildings. The system is designed for use in timber framed buildings with a fire resistance level (FRL) requirement of 60/60/60 or less (from external side), and also suitable for use where a BAL-FZ is required.

Description of product:

The Hardie™ Smart Boundary Wall System is comprised of single 90mm timber framed walls, insulated with 60mm Hardie™ Fire insulation to the external lining side of the frames within the stud bays. Walls to be lined with Hardie™ claddings to the external face & Hardie™ internal lining or standard plasterboard to the internal face (refer to section A3 below).

COMPLIES WITH THE FOLLOWING BCA PROVISIONS AND STATE OR TERRITORY VARIATION(S)

BCA 2019 Amdt.1

Performance Requirement(s)	Volume One		Volume Two	
	N/A	N/A	N/A	N/A
Deemed-to-Satisfy Provision(s):	N/A	N/A	3.5.4.3	Timber and composite wall cladding – Wall cladding boards
			3.5.4.4 (a)	Timber and composite wall cladding – Sheet wall cladding
			3.7.1.1 (d)	Fire properties for materials and construction General concession – non-combustible materials
			3.7.2.4 (a), (b)(i)	Fire separation of external walls – Construction of external walls
			3.10.5.0 (c)	Construction in bushfire prone areas
State or territory variation(s):	N/A	N/A	NSW 3.10.5.0	Construction in bushfire prone areas
			QLD 3.10.5.0	Construction in bushfire prone areas

SAI Global Certification Services

Frank Camasta
Global Head of Technical Services
SAI Global Assurance

Quintin Kleyn – Unrestricted Building Certifier

Date of issue: 13/09/2021

Date of expiry: 12/09/2024



Certificate of Conformity

SUBJECT TO THE FOLLOWING LIMITATIONS AND CONDITIONS AND THE PRODUCT TECHNICAL DATA IN APPENDIX A AND EVALUATION STATEMENTS IN APPENDIX B

Limitations and conditions:

1. Hardie™ Smart Boundary Wall System must be constructed in accordance with Design Guide “Hardie™ Smart Boundary Wall System Class 1 & 10a Timber Frame Building (dated September 2021).
2. External claddings (as listed under section A2 & A3 below) must be installed in accordance with relevant installation guides (as noted under section A3 below) and BCA 2019 Amdt.1, volume 2, clauses 3.5.4.3 or 3.5.4.4.
3. The timber framing must be in accordance with AS 1684 as applicable.
4. Stud spacing & fixings must be in accordance with BCA 2019 Amdt.1, volume 2, clauses 3.5.4.3 or 3.5.4.4.
5. Fire rating requirements of the subfloor, when required by the BCA, must be assessed by the authority having jurisdiction.
6. The footing and slab system is to comply with AS 2870:2011 or AS 3600:2018, as applicable.

Building classification/s:

Volume 2 – Class 1 and Class 10a buildings

Scope of certification: The CodeMark Scheme is a building product certification scheme. The rules of the Scheme are available at the ABCB website www.abcb.gov.au. This Certificate of Conformity is to confirm that the relevant requirements of the Building Code of Australia (BCA) as claimed against have been met. The responsibility for the product performance and its fitness for the intended use remain with the certificate holder. The certification is not transferrable to a manufacturer not listed on Appendix A of this certificate.

Disclaimer: The Scheme Owner, Scheme Administrator and Scheme Accreditation Body do not make any representations, warranties or guarantees, and accept no legal liability whatsoever arising from or connected to, the accuracy, reliability, currency or completeness of any material contained within this certificate; and the Scheme Owner, Scheme Administrator and Scheme Accreditation Body disclaim to the extent permitted by law, all liability (including negligence) for claims of losses, expenses, damages and costs arising as a result of the use of the product(s) referred to in this certificate.

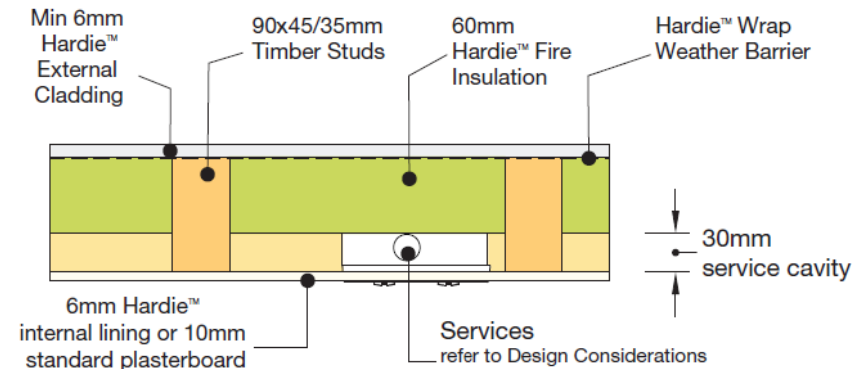
APPENDIX A – PRODUCT TECHNICAL DATA

A1 Type and intended use of product

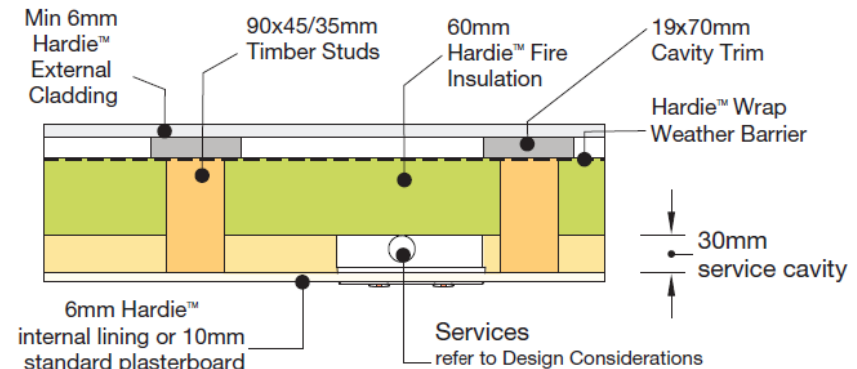
The Hardie™ Smart Boundary Wall System is intended for use as an external wall in Class 1 and Class 10a buildings. The system is designed for use in timber framed buildings with a fire resistance level (FRL) requirement of 60/60/60 or less (from external side), and also suitable for use where a bushfire Attack level (BAL) up to and including BAL-FZ is required in accordance with AS 3959:2018.

A2 Description of product

The Hardie™ Smart Boundary Wall System is comprised of single 90mm timber framed walls, insulated with 60mm Hardie™ Fire insulation to external lining side of the frames within the stud bays. Walls to be lined with Hardie™ claddings to the external face & Hardie™ internal lining or standard plasterboard to the internal face. Variations to system configurations are identified below, and alternate components are identified under A3 product specification section below.



Hardie™ Smart Boundary Wall System



Hardie™ Smart Boundary Wall System with cavity trim

Hardie™ Smart Boundary Wall System Components:

External Cladding	minimum 6mm thick Hardie™ Sheets or minimum 7.5mm thick Hardie™ boards <i>refer to description below in section A3 for suitable variations</i>
Weather Barrier	Hardie™ Wrap weather barrier
Insulation	60mm Hardie™ Fire insulation
Internal Lining	minimum 6mm thick Hardie™ internal lining or 10mm standard plasterboard <i>refer to description below in section A3 for suitable variations</i>

A3 Product specification

Hardie™ Smart Boundary Wall System - Performance	
Fire-resistance level (FRL)	60/60/60 (from external cladding side only)
Bushfire Attack level (BAL)	Up to and including BAL-FZ

Hardie™ External wall cladding boards					
Product	Thickness				Installation Guide
	7.5mm	9mm	14mm	16mm	
Hardie™ Plank Weatherboard Smooth - 230mm, 300mm	✓				Technical Specification – External Cladding – PrimeLine™ Weatherboard – Hardie™ Plank Weatherboard – Hardie™ Flex Sheet – Exteriors (dated July 2021)
Hardie™ Plank Weatherboard Woodgrain – 230mm, 300mm	✓				
PrimeLine™ Chamfer		✓			Technical Specification – External Cladding – PrimeLine™ Weatherboard – Hardie™ Plank Weatherboard – Hardie™ Flex Sheet – Exteriors (dated July 2021)
PrimeLine™ Heritage		✓			
PrimeLine™ Newport		✓			
Linea™ Weatherboard - 150mm, 180mm				✓	Installation Guide – Linea™ Weatherboard – Exteriors (dated August 2021)
Stria™ Cladding – 325mm, 405mm			✓		Installation Guide – Stria™ Cladding – Exteriors (dated August 2021)

Hardie™ External wall cladding sheets						
Product	Thickness					Installation Guide
	6mm	8mm	8.5mm	9mm	12mm	
EasyLap™ Panel			✓			Installation Guide – EasyLap™ Panel External Cladding – Exteriors (dated March 2021)
Hardie™ Fine Texture Cladding			✓			Installation Guide – Hardie™ Fine Texture Cladding – Exteriors (dated September 2021)
Hardie™ Flex Sheets	✓					Technical Specification – External Cladding – PrimeLine™ Weatherboard – Hardie™ Plank Weatherboard – Hardie™ Flex Sheet – Exteriors (dated July 2021)
ExoTec™ Façade Panel				✓		Installation Guide – ExoTec™ Façade Panel and Fixing System – Commercial (dated May 2021)
Matrix™ Cladding		✓				Installation Guide – Matrix™ Cladding – Exteriors (dated August 2021)
Axon™ Cladding 133 Smooth, 133 Grained, 400 Smooth				✓		Installation Guide – Axon™ Cladding – Exteriors (dated August 2021)

Internal linings					
Product	Thickness				Installation Guide
	6mm	7.5mm	9mm	10mm	
Villaboard™ Lining	✓		✓		Installation Guide – Villaboard™ Lining – Interiors (dated July 2021)
Hardie™ Groove Lining		✓			Installation Guide – Hardie™ Groove Lining – Interiors (dated May 2021)
Versilux™ Lining	✓		✓		Installation Guide – Versilux™ Lining – Interiors (dated July 2021)
Standard Plasterboard				✓	The product must comply to the requirements of AS/NZS 2588

A4 Manufacturer and manufacturing plant(s)

James Hardie Australia Pty Ltd
10 Colquhoun St, Rosehill, NSW, 2142 and 1-35 Cobalt St, Carole Park, QLD, 4300

A5 Installation requirements

Refer to Page 2 of this certificate and the following;

- Design Guide – Hardie™ Smart Boundary Wall System Class 1 & 10a Timber Framed Building (dated September 2021).
- For Hardie™ External Cladding Material, Technical specifications or design guides, refer to table in A3 above for relevant guide/s.
- For Hardie™ Internal Lining specifications or design guides, refer to table in A3 above for relevant guide/s.
- Hardie™ Fire insulation – technical data sheet (dated February 2017)
- Hardie™ Wrap Weather Barrier – technical data sheet (dated May 2020)

A6 Other relevant technical data

- None

APPENDIX B – EVALUATION STATEMENTS

B1 Evaluation methods

The system has been assessed as complying with the identified Performance Requirements of the BCA 2019 Amdt.1. This involved a review of product specifications, test reports, installation manuals, and associated documentation.

1. Structural Assessment

- A2.3(2)(a) / A5.2(1)(c) – A current certificate, issued by a certification body – SAI Global

2. Weatherproofing Assessment

- A2.3(2)(a) / A5.2(1)(c) – A current certificate, issued by a certification body – SAI Global

3. Non-combustibility Assessment

- A2.3(2)(a) / A5.2(1)(c) – A current certificate, issued by a certification body – SAI Global

4. Fire Resistance Assessment

- A2.3(2)(a) / A5.2(1)(d) – A report issued by an Accredited testing Laboratory – CSIRO (NATA accreditation No. 165)

5. Bushfire Resistance Assessment

- A2.3(2)(a) / A5.2(1)(d) – A report issued by an Accredited testing Laboratory – CSIRO (NATA accreditation No. 165)

B2 Reports

Evaluation methods	Related Reports
Structural Assessment	1, 2
Weatherproofing Assessment	1, 2
Non-combustibility Assessment	1, 2
Fire Resistance Assessment	3
Bushfire resistance Assessment	3

1. **SAI Global – StandardsMark Licence – Certificate No. SMK02107/1 (issued 26 March 2020).** *This Licence identifies that noted products are manufactured to the requirements of AS/NZS 2908.2:2000 – Cellulose-cement products – Flat sheet.*
2. **SAI Global – StandardsMark Licence – Certificate No. SMK02107/2 (issued 26 March 2020).** *This Licence identifies that noted products are manufactured to the requirements of AS/NZS 2908.2:2000 – Cellulose-cement products – Flat sheet.*
3. **CSIRO – Fire resistance performance of various load-bearing timber framed walls lined with various James Hardie fibre cement products, Assessment report, Report No. FCO-3222 Rev L (dated 25/05/2021) Nata accreditation no. 165.** *This document contains the review of the performance of James Hardie wall systems based on a summary of other tests by CSIRO and BRANZ to AS1530.4 and concludes an FRL of 60/60/60 can be achieved. The opinion refers to variations in framing, inclusion of GPOs and drilling of holes in studs for conduits of 25mm maximum diameter not closer than 10mm to non-fireside.*