



# Certificate of Conformity

**Certification Body:**



SAI Global Certification Services Pty Limited

(ACN 108 716 669) Trading as "SAI Global"

JAS-ANZ Accreditation No. Z1440295AS

Address: 680 George St, Sydney, NSW 2000

Website: [www.saiglobal.com](http://www.saiglobal.com)

**Certificate Holder:**



James Hardie Australia Pty Ltd  
10 Colquhoun St, Rosehill NSW 2142

Ph: 131 103

[www.jameshardie.com](http://www.jameshardie.com)

**Certificate number: CM20136**

**THIS TO CERTIFY THAT**

## Hardie™ Smart ZeroLot™ Wall System

**Type and/or use of product:**

The Hardie™ Smart ZeroLot™ Wall System is intended for use as an external wall in Class 1 and Class 10a timber framed buildings with dual or single zero lot boundaries. The system is designed for use in timber framed buildings with a fire resistance level (FRL) requirement of 60/60/60 or less (from external side), and also suitable for use where a BAL-FZ is required.

**Description of product:**

The Hardie™ Smart ZeroLot™ Wall System is comprised of single 90mm timber framed walls, insulated with 60mm Hardie™ Fire insulation to external lining side of the frames within the stud bays. Walls are lined with Hardie™ ZeroLot™ panels to the external face & Hardie™ internal lining or standard plasterboard to the internal face (refer to section A3 below).

**COMPLIES WITH THE FOLLOWING BCA PROVISIONS AND STATE OR TERRITORY VARIATION(S)**

**BCA 2019 Amdt.1**

	Volume One		Volume Two	
Performance Requirement(s)	N/A	N/A	N/A	N/A
Deemed-to-Satisfy Provision(s):	N/A	N/A	3.5.4.4 (a)	Timber and composite wall cladding – Sheet wall cladding
			3.7.1.1 (d)	Fire properties for materials and construction General concession – non-combustible materials
			3.7.2.4 (a), (b)(i)	Fire separation of external walls – Construction of external walls
			3.10.5.0 (c)	Construction in bushfire prone areas
State or territory variation(s):	N/A	N/A	NSW 3.10.5.0	Construction in bushfire prone areas
			QLD 3.10.5.0	Construction in bushfire prone areas

SAI Global Certification Services

Frank Camasta  
Global Head of Technical Services  
SAI Global Assurance

Quintin Kleyn – Unrestricted Building Certifier

**Date of issue: 13/09/2021**

**Date of expiry: 12/09/2024**



# Certificate of Conformity

**SUBJECT TO THE FOLLOWING LIMITATIONS AND CONDITIONS AND THE PRODUCT TECHNICAL DATA IN APPENDIX A AND EVALUATION STATEMENTS IN APPENDIX B**

**Limitations and conditions:**

1. The Hardie™ Smart ZeroLot™ Wall System is to be constructed in accordance with Design Guide – Hardie™ Smart ZeroLot™ Wall System Class 1 & 10a Timber Framed Buildings (dated September 2021)
2. The timber framing must be in accordance with AS 1684 as applicable.
3. Fire rating requirements of the subfloor, when required by the BCA, must be assessed by the authority having jurisdiction.
4. The footing and slab system is to comply with AS 2870:2011 or AS 3600:2018, as applicable.

**Building classification/s:**

Volume 2 – Class 1 and Class 10a buildings

**Scope of certification:** The CodeMark Scheme is a building product certification scheme. The rules of the Scheme are available at the ABCB website [www.abcb.gov.au](http://www.abcb.gov.au). This Certificate of Conformity is to confirm that the relevant requirements of the Building Code of Australia (BCA) as claimed against have been met. The responsibility for the product performance and its fitness for the intended use remain with the certificate holder. The certification is not transferrable to a manufacturer not listed on Appendix A of this certificate.

**Disclaimer:** The Scheme Owner, Scheme Administrator and Scheme Accreditation Body do not make any representations, warranties or guarantees, and accept no legal liability whatsoever arising from or connected to, the accuracy, reliability, currency or completeness of any material contained within this certificate; and the Scheme Owner, Scheme Administrator and Scheme Accreditation Body disclaim to the extent permitted by law, all liability (including negligence) for claims of losses, expenses, damages and costs arising as a result of the use of the product(s) referred to in this certificate.

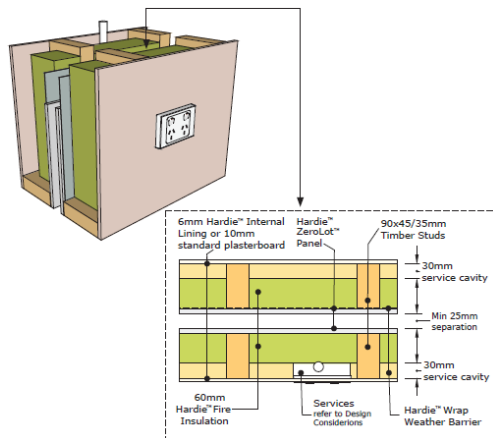
## APPENDIX A – PRODUCT TECHNICAL DATA

### A1 Type and intended use of product

The Hardie™ Smart ZeroLot™ Wall System is intended for use as an external wall in Class 1 and Class 10a timber framed buildings with dual and single zero lot boundaries. The system is designed for use in timber framed buildings with a fire resistance level (FRL) requirement of 60/60/60 or less (from external side), and also suitable for use where a bushfire attack level (BAL) up to and including BAL-FZ is required in accordance with AS 3959:2018

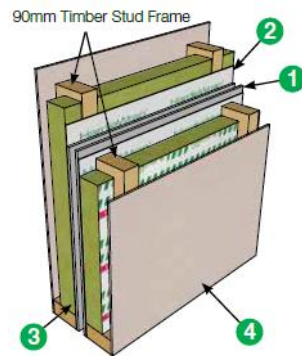
### A2 Description of product

The Hardie™ Smart ZeroLot™ Wall System is comprised of single 90mm timber framed walls, insulated with 60mm Hardie™ Fire insulation to external lining side of the frames within the stud bays. Walls are lined with Hardie™ ZeroLot™ panels to the external face & Hardie™ internal lining or standard plasterboard to the internal face.



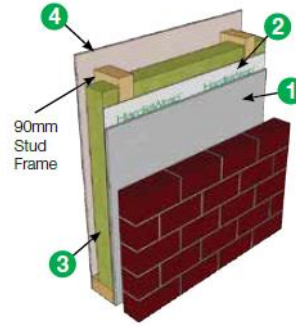
### DUAL ZERO LOT

For fully detached row housing.



### SINGLE ZERO LOT

For boundary walls built against existing walls



### Hardie™ Smart ZeroLot™ Wall System Components:

1. External Cladding	Hardie™ ZeroLot™ Panel – 8.5mm thick fibre cement panel with ship lap joints to long edges.
2. Weather Barrier	Hardie™ Wrap weather barrier
3. Insulation	60mm Hardie™ Fire insulation
4. Internal Lining	Minimum 6mm thick Hardie™ internal lining or 10mm standard plasterboard <i>refer to description below in section A3 for suitable variations</i>
5. ZeroLot™ Panel Accessories	Hardie™ 9mm Aluminium Horizontal Step Flashing Hardie™ 9mm Aluminium External Corner Hardie™ 50mm Wide Foam Back Sealing Tape

## A3 Product specification

Hardie™ Smart ZeroLot™ Wall System - Performance	
Fire-resistance level (FRL)	60/60/60 (from external cladding side only)
Bushfire attack level (BAL)	Up to and including BAL-FZ

Internal linings					
Product	Thickness				Installation Guide
	6mm	7.5mm	9mm	10mm	
Villaboard™ Lining	✓		✓		Installation Guide – Villaboard™ Lining – Interiors (dated July 2021)
Hardie™ Groove Lining		✓			Installation Guide – Hardie™ Groove Lining – Interiors (dated May 2021)
Versilux™ Lining	✓		✓		Installation Guide – Versilux™ Lining – Interiors (dated July 2021)
Standard Plasterboard				✓	The product must comply to the requirements of AS/NZS 2588

*System specifications are contained within the Design Guide – Hardie™ Smart ZeroLot™ Wall System Class 1 & 10a Timber Framed Buildings (dated September 2021)*

## A4 Manufacturer and manufacturing plant(s)

James Hardie Australia Pty Ltd  
10 Colquhoun St, Rosehill, NSW, 2142 and 1-35 Cobalt St, Carole Park, QLD, 4300

## A5 Installation requirements

Refer to Page 2 of this certificate and the following;

- Design Guide – Hardie™ Smart ZeroLot™ Wall System Class 1 & 10a Timber Framed Buildings (dated September 2021)
- For Hardie™ Internal Lining specifications or design guides, refer to table in A3 above for relevant guide/s.
- Hardie™ Fire insulation – technical data sheet (dated February 2017)
- Hardie™ Wrap Weather Barrier – technical data sheet (dated May 2020)

## A6 Other relevant technical data

- None

## APPENDIX B – EVALUATION STATEMENTS

### B1 Evaluation methods

The system has been assessed as complying with the identified Performance Requirements of the BCA 2019 Amdt.1. This involved a review of product specifications, test reports, installation manuals, and associated documentation.

1. **Structural Assessment**
  - a. A2.3(2)(a) / A5.2(1)(c) – A current certificate, issued by a certification body – SAI Global
2. **Weatherproofing Assessment**
  - a. A2.3(2)(a) / A5.2(1)(c) – A current certificate, issued by a certification body – SAI Global
3. **Non-combustibility Assessment**
  - a. A2.3(2)(a) / A5.2(1)(c) – A current certificate, issued by a certification body – SAI Global
4. **Fire Resistance Assessment**
  - a. A2.3(2)(a) / A5.2(1)(d) – A report issued by an Accredited testing Laboratory – CSIRO (NATA accreditation No. 165)
5. **Bushfire Resistance Assessment**
  - a. A2.3(2)(a) / A5.2(1)(d) – A report issued by an Accredited testing Laboratory – CSIRO (NATA accreditation No. 165)

### B2 Reports

Evaluation methods	Related Reports
Structural Assessment	1, 2
Weatherproofing Assessment	1, 2
Non-combustibility Assessment	1, 2
Fire Resistance Assessment	3
Bushfire resistance Assessment	3

1. **SAI Global – StandardsMark Licence – Certificate No. SMK02107/1 (issued 26 March 2020).** *This Licence identifies that noted products are manufactured to the requirements of AS/NZS 2908.2:2000 – Cellulose-cement products – Flat sheet.*
2. **SAI Global – StandardsMark Licence – Certificate No. SMK02107/2 (issued 26 March 2020).** *This Licence identifies that noted products are manufactured to the requirements of AS/NZS 2908.2:2000 – Cellulose-cement products – Flat sheet.*
3. **CSIRO – Fire resistance performance of various load-bearing timber framed walls lined with various James Hardie fibre cement products, Assessment report, Report No. FCO-3222 Rev L (dated 25/05/2021) Nata accreditation no. 165.** *This document contains the review of the performance of James Hardie wall systems based on a summary of other tests by CSIRO and BRANZ to AS1530.4 and concludes an FRL of 60/60/60 can be achieved. The opinion refers to variations in framing, inclusion of GPOs and drilling of holes in studs for conduits of 25mm maximum diameter not closer than 10mm to non-fireside.*