

ateljé Lyktan



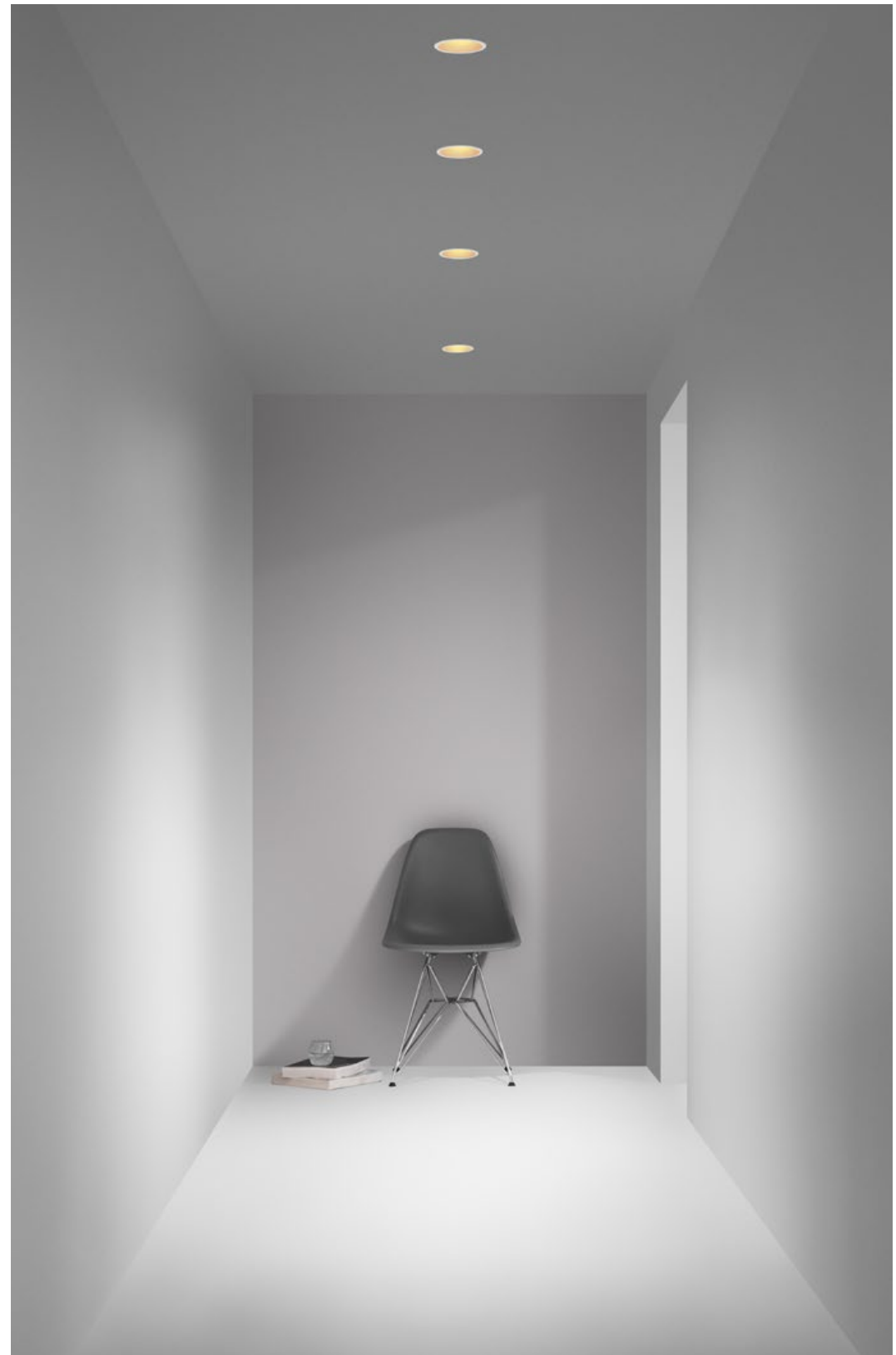
BLAZE

Design by Olle Lundberg

Spotlight with high performance

A newly developed line of recessed LED spotlights with a high colour rendering index and performance, serving as an ideal replacement for energy intensive lighting.

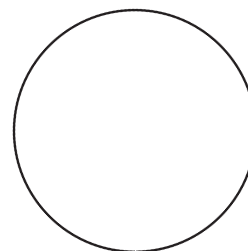
The light engine is available in three different beam angles and colour temperatures, and ten types of luminaire housings, providing lighting possibilities in all kinds of environments.



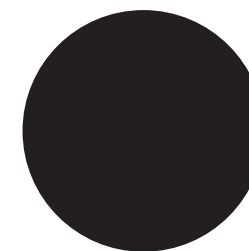




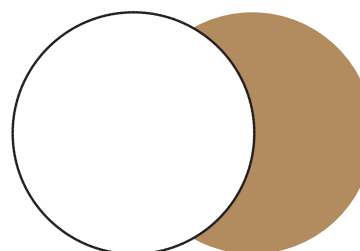
Standard finish



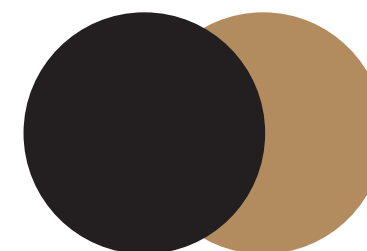
White
RAL 9003 G45



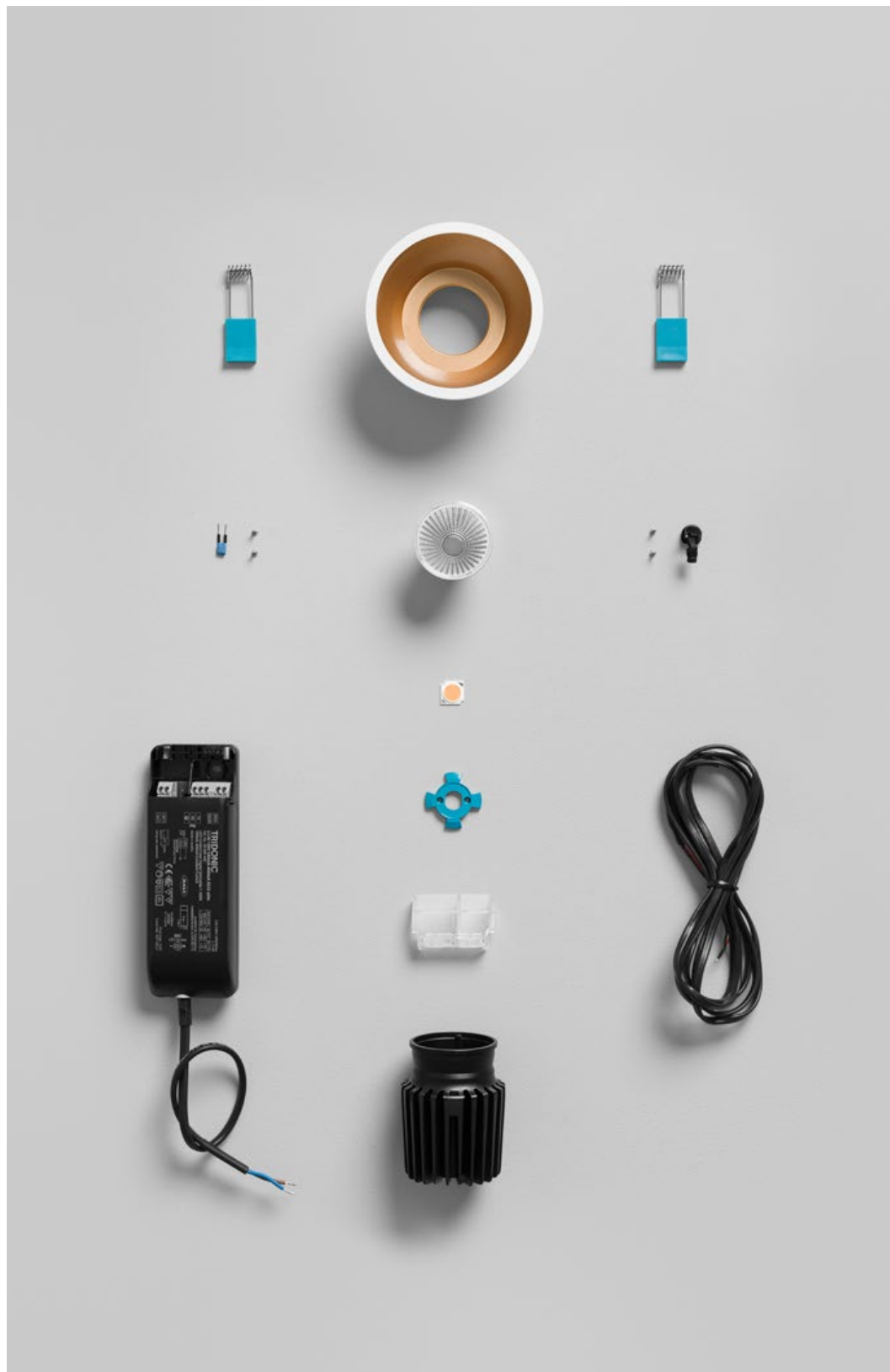
Black
RAL 9005 G45



White/Gold
RAL 9003 G45,
RAL 1036 G45

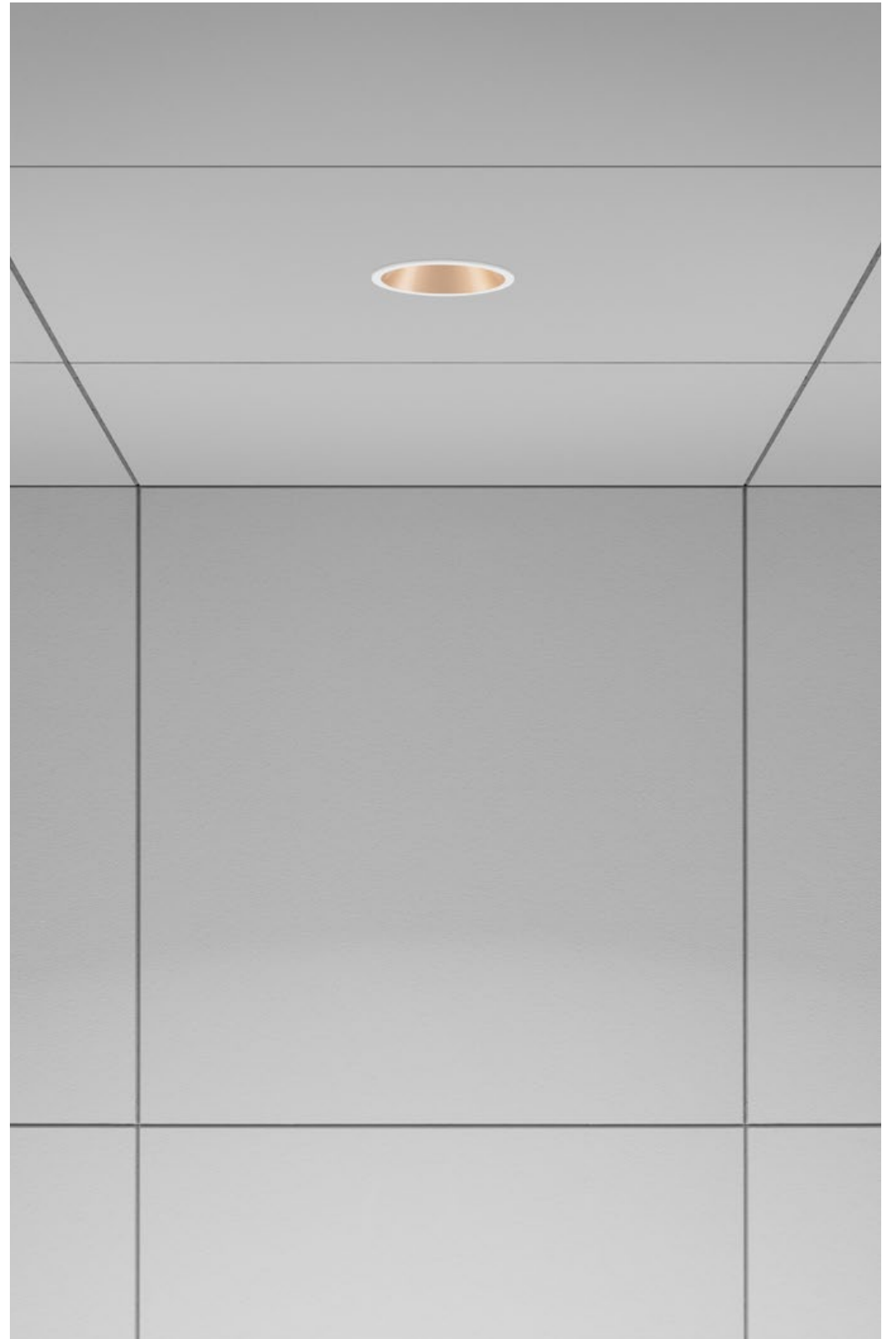


Black/Gold
RAL 9005 G45,
RAL 1036 G45



Product information

Material	Light engine in die-cast anodised aluminium. Reflectors in anodised spun aluminium. Luminaire housing in painted spun aluminium.
Installation	All light engines can be combined with a choice of luminaire housing. The luminaire housing is easily assembled and requires no tools. Luminaire housing suitable for ceiling tickness 3-25 mm.
Connection	The light engine comes with a 2 metre cable and fast connector for easy connection to the driver. The connector cable to the primary winding can be ordered separately, with optional fast connector or separate connector. Up to three luminaires are connected in parallel to the driver.
Light source	Incl. LED light source, colour temperature 2700K, 3000K or 4000K. Colour rendering CRI >97. Chromaticity tolerance max 3 SDCM. Lifespan: L90B10 50 000h.
Light regulation	DALI, DSI, SwitchDIM, CorridorFUNCTION and Phase dim via dimmer switch or remote dimmer switch. Recommended dimmer switch from Eltako EUD61NPL-230V and LED Universal dimmer 400W from Schneider Exxact. Please note that the luminaire is only sold together with the recommended driver from Tridonic, otherwise the warantee is not valid.
Other	Not for outdoor use.
Measure (mm)	Light engine: Ø50xH80. Luminaire housing: Adjustable (max. tilt 15°): Ø90xH33. Luminaire housing: Adjustable Large (max. tilt 20°): Ø105xH36. Luminaire housing: Adjustable Deep (max. tilt 15°): Ø90xH60. Luminaire housing: Deep: Ø102xH47. Luminaire housing: IP44: Ø90xH22. Luminaire housing: Square: Ø100xH50.
Article no. (etc.)	www.atelje-lyktan.com



ateljé Lyktan

HEAD OFFICE

Fyrvaktaregatan 7, SE-296 81 Åhus
+46 (0)44 28 98 00, info@ateljelyktan.se

OFFICES

- > Hesselmans Torg 9, 131 54 Nacka
- > Fabriksgatan 7, 412 50 Göteborg
- > Slussgatan 10, 211 30 Malmö
- > Västra Varvgatan 3, 972 36 Luleå
- > 33-34 Dolben Street, GB-SE1 0UQ London
- > Strandveien 30, Pb 471, N-1327 Lysaker
- > Mannerheimintie 113, FI-00280 Helsinki
- > Leninskaya Sloboda str. 26, bld. C, office 418, RU-115280 Moscow
- > Axelsestraat 49, NL-4543 CD Zaamslag
- > 25 Tagore Lane #03-10, Singapore G Building, Singapore 787602

www.ateljelyktan.com