

ateljé Lyktan



# BUMLING MINI

Design by Anders Pehrson

## A design classic

"It's like a big boulder, Anders!" a friend of designer Anders Pehrson is believed to have said, when he saw the new pendant lamp at the lighting exhibition in Gothenburg in 1968. The lamp was bulky, British racing green and 60 cm in diameter.

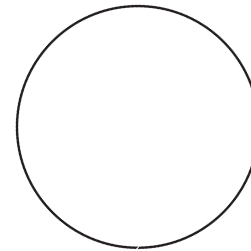
During the 1970s, a whole range of Bumling lamps was launched. The popularity of table, floor and wall versions, alongside many variations on the original pendular Bumling. Despite earning its iconic status in the 1970s, Bumling still looks modern in today's homes, and represents great Swedish quality and design now as then.





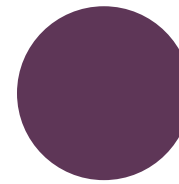


## Standard finish

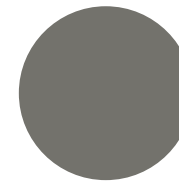


White  
NCS 0500-N G90

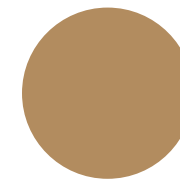
## Optional colours



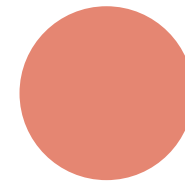
Dusty purple  
NCS S5040-R30B



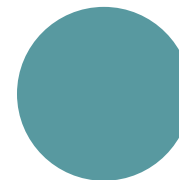
Grey  
NCS S5502-Y



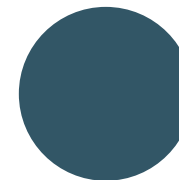
Champagne  
NCS S 3030-Y20R



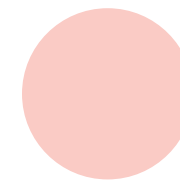
Salmon pink  
NCS S2040-Y80R



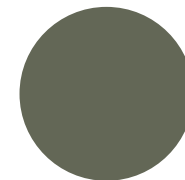
Turquoise  
NCS S3030-B30G



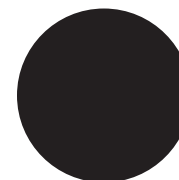
Dusty blue  
NCS S6020-B



Dusty pink  
NCS S1515-R



Dusty green  
NCS S6010-G70Y



Black  
RAL9005

Material	Shade in spun aluminium.
Installation	Pendant: Suspended in 2.5 m cable. Wall: Wall mounted.
Connection	Pendel: Supplied with 2.5 m halogen-free white cable 2G0.75 mm <sup>2</sup> . Ceiling cup with terminal block 2x2.5 mm <sup>2</sup> . Wall: Supplied with terminal block in junction box 3x2.5 mm <sup>2</sup> . Table: Supplied with 2.5 m halogen free white cable 2G0.75 mm <sup>2</sup> . Floor: Supplied with 3 m halogen free white cable 2G0.75 mm <sup>2</sup> .
Diffuser	Circular grid in opal acrylic combined with diffuser film.
Light source	Includes 230V LED light source, colour temperature 2700K. Colour rendering: CRI 80. Chromaticity tolerance: max 3 SDCM. Lifespan: L70B10 50 000h. Or selectable GU10 light source.
Light regulation	Wall: Luminaire with GU10 light source is dimmable via rotary dimmer on wall bracket. Table/Floor: Luminaire with GU10 light source is dimmable via dimmer on cord.
Measure (mm)	Pendant: Ø190xH125 or Ø250xH165. Wall: Ø190xH350. Table: Ø190xH540. Floor: Ø190xH1470.
Article no. (etc.)	<a href="http://www.atelje-lyktan.com">www.atelje-lyktan.com</a>





# ateljé Lyktan

## HEAD OFFICE

Fyrvaktaregatan 7, SE-296 81 Åhus  
+46 (0)44 28 98 00, [info@ateljelyktan.se](mailto:info@ateljelyktan.se)

## OFFICES

- > Hesselmanns Torg 9, 131 54 Nacka
- > Fabriksgatan 7, 412 50 Göteborg
- > Slussgatan 10, 211 30 Malmö
- > Västra Varvgatan 3, 972 36 Luleå
- > 33-34 Dolben Street, GB-SE1 0UQ London
- > Strandveien 30, Pb 471, N-1327 Lysaker
- > Mannerheimintie 113, FI-00280 Helsinki
- > Leninskaya Sloboda str. 26, bld. C, office 418, RU-115280 Moscow
- > Axelsestraat 49, NL-4543 CD Zaamslag
- > 25 Tagore Lane #03-10, Singapore G Building, Singapore 787602

[www.ateljelyktan.com](http://www.ateljelyktan.com)