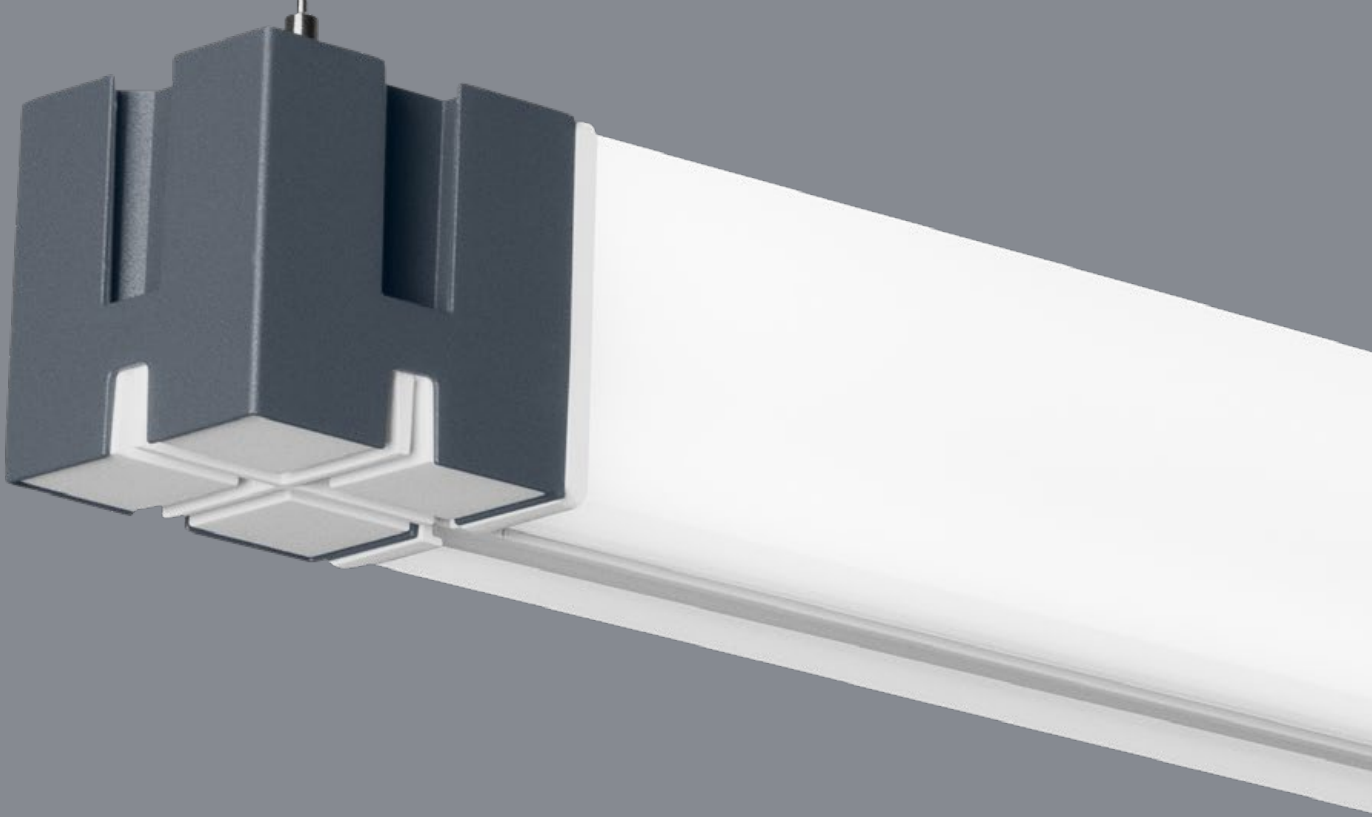


atelier Lyktan



VAULT

Design by Fourmation

Great design starts and ends with the customer

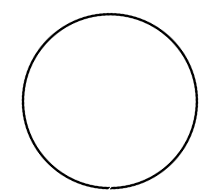
"Vault is a culmination of our experience designing interior spaces, and addresses the need for a flexible easily installed lighting system. We are not lighting designers, but as retail interior designers are well placed to see when there is a need, or a potential gap in the market", says John from the creative agency Fourmation.





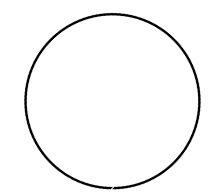


Standard finish profile

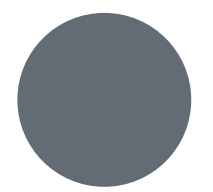


White
NCS S0500-N fine texture

Standard finish block

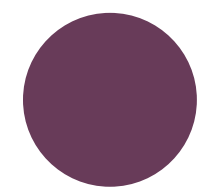


White
NCS S0500-N fine texture

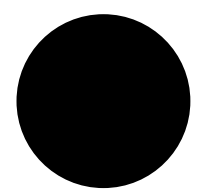


Graphite grey
RAL7024 fine texture
Note! The bottom of the
block is always white NCS
S0500-N fine texture

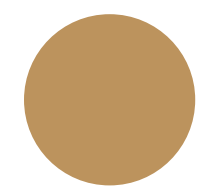
Optional colours



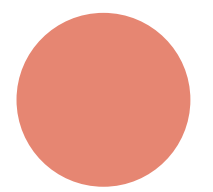
Dusty purple
NCS S5040-R30B



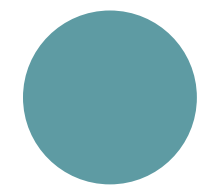
Black
RAL9005



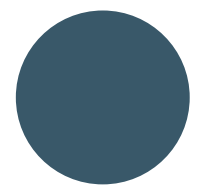
Champagne
NCS S 3030-Y20R



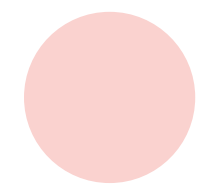
Salmon pink
NCS S2040-Y80R



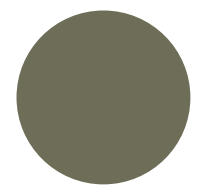
Turquoise
NCS S3030-B30G



Dusty blue
NCS S6020-B



Dusty pink
NCS S1515-R



Dusty green
NCS S6010-G70Y



Product information

Material	Profile in extruded aluminium. Diffuser in opal acrylic glass. Block in die-cast solid metal.
Light bars	There are two different kinds of light bars: Light bar: Enables electrical through wiring. Light bar End: Only for mechanical connection on one side.
Diffuser	Opal acrylic glass.
Light source	Inc. LED light source. Colour temperature: 3000K or 4000K. Colour rendering: CRI 80. Chromaticity tolerance: max 3 SDCM. Life span: L90B10 60 000hrs.
Light scattering	Symmetrical omnidirectional. Profile can be mounted in two directions, main direction of the light can be up and down or to the sides.
Driver	Equipped with 24V DALI driver from Tridonic. Light regulation 1-100%. Life span: 50 000hrs.
Block	There are three different kinds of blocks delivered with a 4 m height adjustable wire. Power block: Delivered with connection cable and driver. Link block: Enables electrical through wiring. Block: Only for mechanical connection.
Installation	Vault single and system luminaires consists of two types of components - blocks (suspension units) and light bars (light units). From each Power block up to four light bars can be connected horizontally. Each Power block can power 6.2m light bar.
Connection	Delivered with 1,8 m transparent cable on the secondary side and with 2,5 m white 5-cord connection cable with flying leads on the primary side. The driver is placed above the ceiling. For installation with fixed ceiling or if the luminaire is suspended further down than 1,8 m so that the driver is visible a driver box is available as an accessory.
Measure (mm)	L64 / 1144 / 1564 / 1984xW64xH63
Article no. (etc.)	www.atelje-lyktan.com



ateljé Lyktan

HEAD OFFICE

Fyrvaktaregatan 7, SE-296 81 Åhus
+46 (0)44 28 98 00, info@ateljelyktan.se

OFFICES

- > Hesselmans Torg 9, 131 54 Nacka
- > Fabriksgatan 7, 412 50 Göteborg
- > Slussgatan 10, 211 30 Malmö
- > Västra Varvgatan 3, 972 36 Luleå
- > 33-34 Dolben Street, GB-SE1 0UQ London
- > Strandveien 30, Pb 471, N-1327 Lysaker
- > Mannerheimintie 113, FI-00280 Helsinki
- > Leninskaya Sloboda str. 26, bld. C, office 418, RU-115280 Moscow
- > Axelsestraat 49, NL-4543 CD Zaamslag
- > 25 Tagore Lane #03-10, Singapore G Building, Singapore 787602

www.ateljelyktan.com