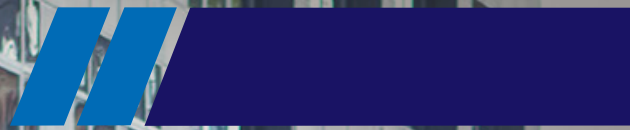


///CODE 3®



**FIRE
SOLUTIONS**

KEEPING YOU SAFE IN THE WORKPLACE

At ECCO Safety Group 'Your safety is our passion', Our Mission is to provide our customers with superior product value, innovation, unmatched delivery and service excellence.

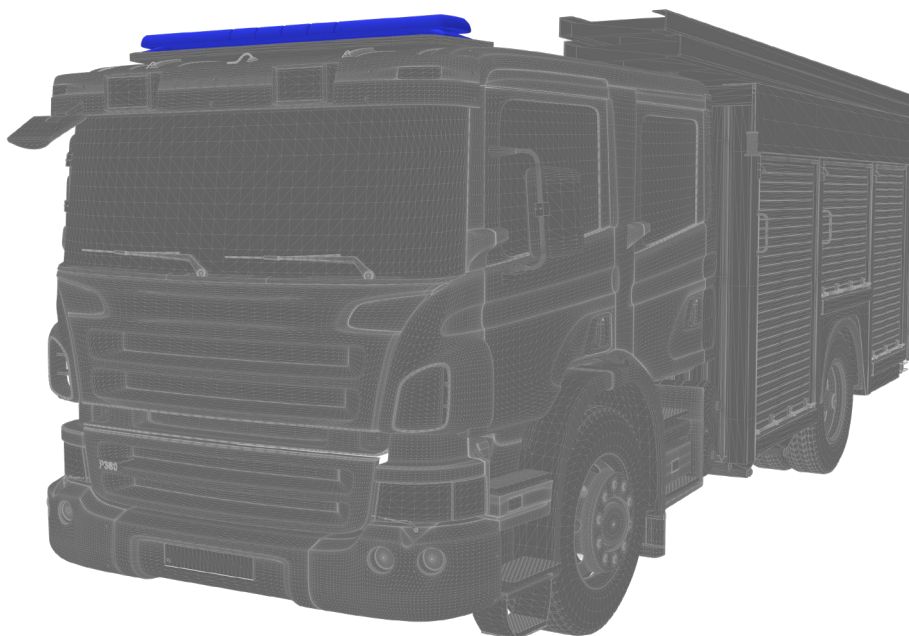
At ECCO Safety Group we pride ourselves in taking a consultative approach to understand, develop and support your Emergency Lighting requirements. Utilising innovation and customer service excellence we design, test and manufacture Emergency Lighting of the highest quality, specification and durability. Moreover, our new purpose built manufacturing facility in Leeds stock a large and varied range of exterior lighting, interior lighting and camera systems which complement our Emergency portfolio, similarly manufactured and tested to our rigorous standards.

Suitable for fire, police and ambulance services, local authorities, Government agencies, airports and highways to your precise specification.



A typical range of products available from Code 3 for Fire Vehicles. For our full comprehensive range, please refer to our websites and catalogues.

Recommended installation location option



12+ Series - Vantage™

R65 Class II LED Lightbar



AVAILABLE COLOURS



- C** Single Colour & Dual Colour
- T** Spot/Flood, Alley Lights, STI lights, Take down lights
- L** 1212mm, 1372mm, 1524mm, 1828mm
- V** 12-24
- ✓ R65 Class II, R10, CISPR 25
- 🕒 5 Years Lightbar

- ICE Optic LED technology for superior light output
- Performance and durability in a low profile housing
- Configurable modular technology to custom specification
- Exceptional EMC performance (CISPR 25)
- Aluminium chassis, polycarbonate base and lens
- Clear & blue high impact polycarbonate lens options available

Additional options:

Spot / flood lighting
Stop tail / indicator
Alley lights
Take down lights
Centre Illumination

SPECIFY TO YOUR REQUIREMENTS

LIGHTBARS

21 Series

R65 LED Lightbar



AVAILABLE COLOURS



- C** Single Colour and Dual Colour
- T** Alley Lights, Takedowns, Traffic Director, STI's
Cruise Lights, Dimming functionality, Solar panels
- L** 559mm, 914mm, 1066mm, 1193mm
- V** 12-24
- ⊗** R65, R10, NPIA
- ⌚** 5 Years LED Modules
2 Years Lightbar

- Long life LED technology
- Provides 360° visibility
- Performance and durability
- Black, blue and clear covers available
- Dimmable for optimum night time use
- Configurable modular technology to custom specification
- Various mounting options available

Additional options:

Spot / flood lighting
Alley lights
Take down lights

Solex™ Series

R65 LED Lightbar



- C** Single Colour & Dual Colour
- T** Alley Lights, Takedowns, STI's, Cruise Lights, Steady burn
warning lights & 100w Speaker
- L** 1194mm & 1346mm
- V** 12
- ⊗** R65, R10
- ⌚** 5 Years

AVAILABLE COLOURS



- Second level that allows for additional options
- Modern & aerodynamic in appearance and performance
- Two full signals out of one light head
- One touch setting/changing of flash patterns
- Configurable custom specification
- CANBUS enabled
- Built-in Narrowstik function

Additional options:

Alley lights
Take down lights
Cruise lights
Steady burn warning lights
100w Speaker

SPECIFY TO YOUR REQUIREMENTS

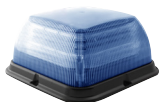
EB7181 Series

R65 Class I & II LED Square Beacon



EB7181CB

C Blue
V 12-24
A 6.2
X 4 Bolt
⊗ R65, R10, IP55
⌚ 3 Year



EB7186BBB

C Blue
V 12-24
A 8.6
X 4 Bolt
⊗ R65, R10, IP55
⌚ 3 Year

CL299 Series

R65 Class I & II LED Beacon



CL299B-R65-2

C Blue
V 12-24
A 1.2
X 3 Bolt
⊗ R65, R10
⌚ 5 Year



CL299BM-R65-2

C Blue
V 12-24
A 1.2
X Magnetic
⊗ R65, R10
⌚ 5 Year

LB111 Series

R65 LED Minibar



LB111-02B-DV

C Blue
V 12-24
A 2.3
X 1 Bolt
⊗ R65, R10
⌚ 2 Year
5 Year LEDs



LB111-02BM-DV

C Blue
V 12-24
A 2.3
X Magnetic
⊗ R65, R10
⌚ 2 Year
5 Year LEDs



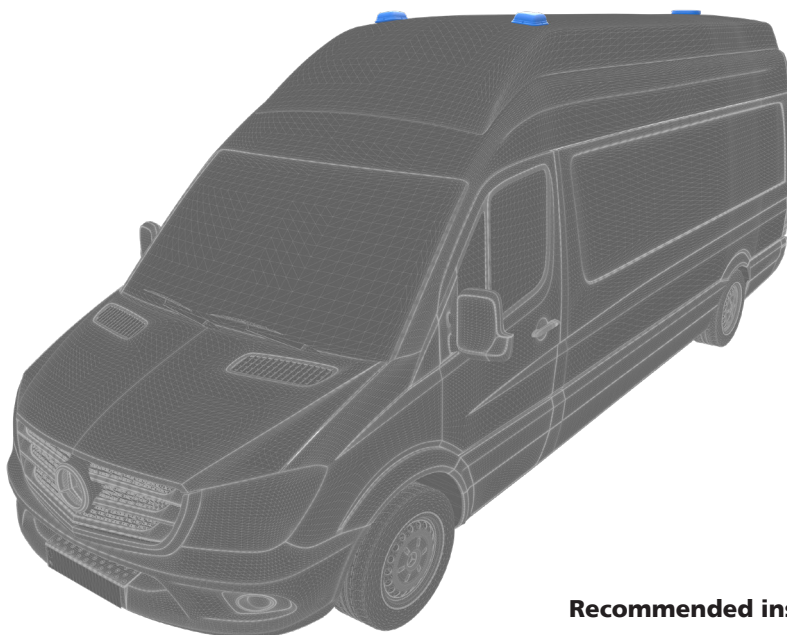
LB111-100B-DV

C Blue
V 12-24
A 3.1
X 1 Bolt
⊗ R65, R10
⌚ 2 Year
5 Year LEDs



LB111-100BM-DV

C Blue
V 12-24
A 3.1
X Magnetic
⊗ R65, R10
⌚ 2 Year
5 Year LEDs



Recommended installation location options

SPECIFY TO YOUR REQUIREMENTS

WHITE LIGHTING

Recommended installation location options



EW2019
V 12-24
A 0.4
L 600 Raw, 550 Effective
Flood
✓ CE, IP67, RoHS
⌚ 3 Year



EW2471
V 12-24
A 1.2
L 550 Raw, 500 Effective
Flood
✓ CE, R10, IP67
⌚ 3 Year



EW2481
V 12-24
A 1.2
L 600 Raw, 600 Effective
Flood
✓ CE, R10, IP67
⌚ 3 Year



EW2491
V 12-24
A 1.2
L 550 Raw, 450 Effective
Flood
✓ CE, R10, IP67
⌚ 3 Year



EW2411
V 12-24
A 1.3
L 1000 Raw, 900 Effective
Flood
✓ IP67, CE, R10
⌚ 3 Year



EW2451
V 12-24
A 2.2
L 1300 Raw, 1100 Effective
Flood
✓ CE
⌚ 3 Year



EW2461
V 12-24
A 3.2
L 650 Raw, 600 Effective
Flood
✓ CE, IP68
⌚ 1 Year



EW5430
V 10-30
A 2.4
L 2400 Effective
Main Beam Headlamp
✓ R10, R112, IP68
⌚ 2 Year

SPECIFY TO YOUR REQUIREMENTS

Interior Lighting



12"

EW0116

T 18 LED
V 12
A 0.4
L 350 Raw, 350 Effective
 Flood
 CE, RoHS, IP65
 3 Year



24"

EW0127

T 36 LED
V 24
A 0.4
L 700 Raw, 700 Effective
 Flood
 CE, RoHS, IP65
 3 Year



4.5" CLEAR

EW0310

T 4 LED
V 12-24
A 0.1
L 100 Raw, 100 Effective
 Flood
 CE, RoHS
 3 Year



7" CLEAR

EW0320

T 8 LED
V 12-24
A 0.1
L 200 Raw, 200 Effective
 Flood
 CE, RoHS
 3 Year



14" MODULAR FROST

EW0351

T 16 LED
V 12
A 0.5
L 300 Raw, 250 Effective
 Flood
 CE, RoHS
 3 Year



CONNECT
MULTIPLE UNITS
TOGETHER



Multiple lengths available



13"

EW0700

T 6 LED
V 12-24
A 0.5
L 400 Raw, 350 Effective
 Flood
 CE, RoHS
 3 Year



22"

EW0701

T 12 LED
V 12-24
A 0.9
L 1250 Raw, 1200 Effective
 Flood
 CE, RoHS
 3 Year



5.5"

CW0400-WR

C White/Red
T 10 LED
V 12-24
A 0.3
L 744 White / 90 Red
 Flood
 IP5K5, R10
 3 Year



12"

CW0401-WR

C White/Red
T 22 LED
V 12-24
A 0.5
L 1364 White / 165 Red
 Flood
 IP5K5, R10
 3 Year



Recommended installation location options

SPECIFY TO YOUR REQUIREMENTS

CODE 3

DIRECTIONAL LEDS



M180S-B

- C Blue
- V 12-24
- A 1.8
- X Multi Mount
- ✓ R65, R10, CE, IP67
- ⌚ 3 Year

32mm x 131mm x 37mm

AVAILABLE COLOURS



M18DL-B

- C Blue
- V 12-24
- A 1.7
- X Multi Mount
- ✓ R65, R10, CE, IP67
- ⌚ 5 Year

86mm x 130mm x 33mm

AVAILABLE COLOURS



CD5110B

- C Blue
- V 12-24
- A 1.0
- X Surface
- ✓ R65, R10, IP69K
- ⌚ 3 Year

118mm x 130mm x 19.4mm

AVAILABLE COLOURS



ULT6-B

- C Blue
- V 12-24
- A 0.9
- X Surface
- ✓ R65, R10, IP67
- ⌚ 3 Year

31mm x 120mm x 13mm

AVAILABLE COLOURS



CD5050B

- C Blue
- V 10-30
- A 0.8
- X Grille
- ✓ R65, R10, IP67
- ⌚ 5 Year

136mm x 25mm x 15mm

AVAILABLE COLOURS



3812B

- C Blue
- V 12-48
- A 0.4
- X Surface/Bracket
- ✓ CE, R65, R10
- ⌚ 3 Year

53mm x 151mm x 30mm

AVAILABLE COLOURS



ED5100CB

- C Blue
- V 10-30
- A 1.2
- X Surface/Bracket
- ✓ R65, R10, IP67
- ⌚ 3 Year

33mm x 171mm x 75mm

AVAILABLE COLOURS



LL126-001

- C Blue
- V 12-24
- A 1.2
- X Flush Mount
- ✓ R65, R10
- ⌚ 2 Year

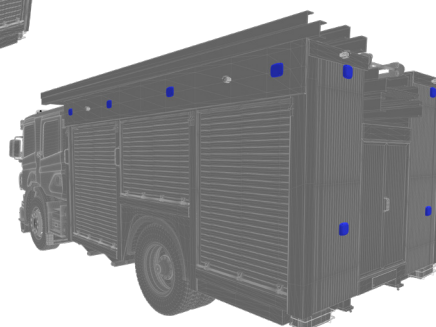
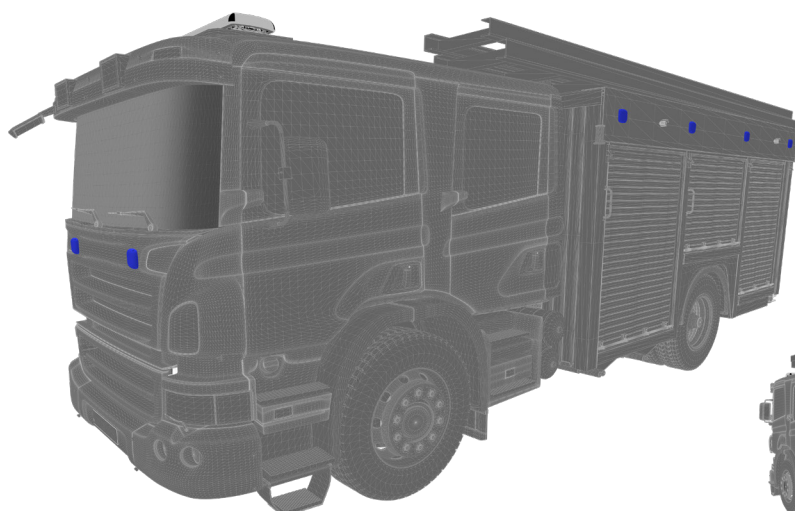
26mm x 26mm x 15mm

AVAILABLE COLOURS



Where applicable, change A in part number to available colour

Recommended installation location options



SPECIFY TO YOUR REQUIREMENTS

CONTROLLER, SIRENS & SPEAKERS

STC Series

Standard Touch Controller



STC

V 12-24

✓ R10, NP1A Approved

⌚ 2 Year

- Ultimate controller for any vehicle
- Provides total control over all lights, sirens & speakers
- Easy to operate panel with configurable membrane
- Available in a variety of mounting options
- Includes built-in microphone, high-visibility back lit keypad and automatic light sensors with optional audible warnings
- Fully customisable and lockable programming
- Each unit comes complete with handset, rear control box, connectors and extenders needed for installation

9000 Series

Shockwave Siren



9005

D 138 x 156 x 59

V 12 or 24

W 1.28kg

✓ R10, NP1A, KBA

⌚ 2 Year

7000 Series

Dash Mount Siren



7009-12-Series

D 149 x 140mm x 48mm

V 12

W 1.76kg

✓ R10, NP1A

⌚ 2 Year

CS200 Series

Sirens



CS202

D 159 x 192 x 59

V 12-24

W 1.78kg

✓ R10

⌚ 2 Year

Banshee Series

Siren



3450

D 215 x 145 x 71

V 10-16

W 1.45kg

✓ R10

⌚ 2 Year

PX100 Series

Speakers



PX100-A

F 300 to 10,000Hz

V 12

W 2.8kg

⌚ 2 Year



PX100-R

F 300 to 10,000Hz

V 12

W 2.8kg

⌚ 2 Year



PX100-C

F 300 TO 10,000Hz

V 12

W 2.8kg

⌚ 2 Year



PX100-LP

F 300 to 10,000Hz

V 12

W 5.0kg

⌚ 2 Year

SPECIFY TO YOUR REQUIREMENTS

MOBILE SURVEILLANCE SOLUTIONS

Fire Officers Car

- Compact system for officer's cars
- 2 cameras front / rear up to 3 additional cameras
- Built-in WiFi capability for auto transfer of data
- Uses same software as front line appliances
- 5-channel video recorder
- Supports high & standard definition cameras
- Flexible approach for small vehicles to 4x4's
- Logs activation of peripheral systems

Facility for centralised server storage enables safe, secure and effective data management.

System includes:



DVRM1-AH0401G4

- Digital recorder
- 2 x lockable SD card slots
- Built-in GPS and WiFi



CAMA05-000

- CMOS LED camera
- 1280 X 720 resolution
- Clear detailed images



CAMA03-000

- CMOS 18 LED infrared camera
- Horizontal resolution 800TVL
- Clear detailed images



MON703-000

- 5" colour monitor (Optional)

Front Line Appliances

Including airport crash tenders, aerial ladder platforms, and command units

- 12-channel video recorder
- High quality and flexible solution
- Supports HD and analog cameras
- Wireless camera options available
- Uses same back office operating system
- Logs activation of peripheral systems
- Built-in shock and G-force sensors
- 4G for live streaming
- Automatic WiFi data transfer

One of our most popular surveillance and logging solutions for front line appliances in the UK.

System includes:



DVR208

- Digital recorder
- Up to 2TB hard drive
- Built-in GPS and WiFi



CAMIN003-004BLK

- Black PON camera, infra-red
- 720p, 1280x720 resolution
- Clear detailed images



CAMI003-002

- PON dome camera
- 720p, 1280x720 resolution
- Clear detailed images



CAM094-000

- CMOS 20 LED camera
- Horizontal resolution 700TVL
- Reverse image camera



CAM163-001

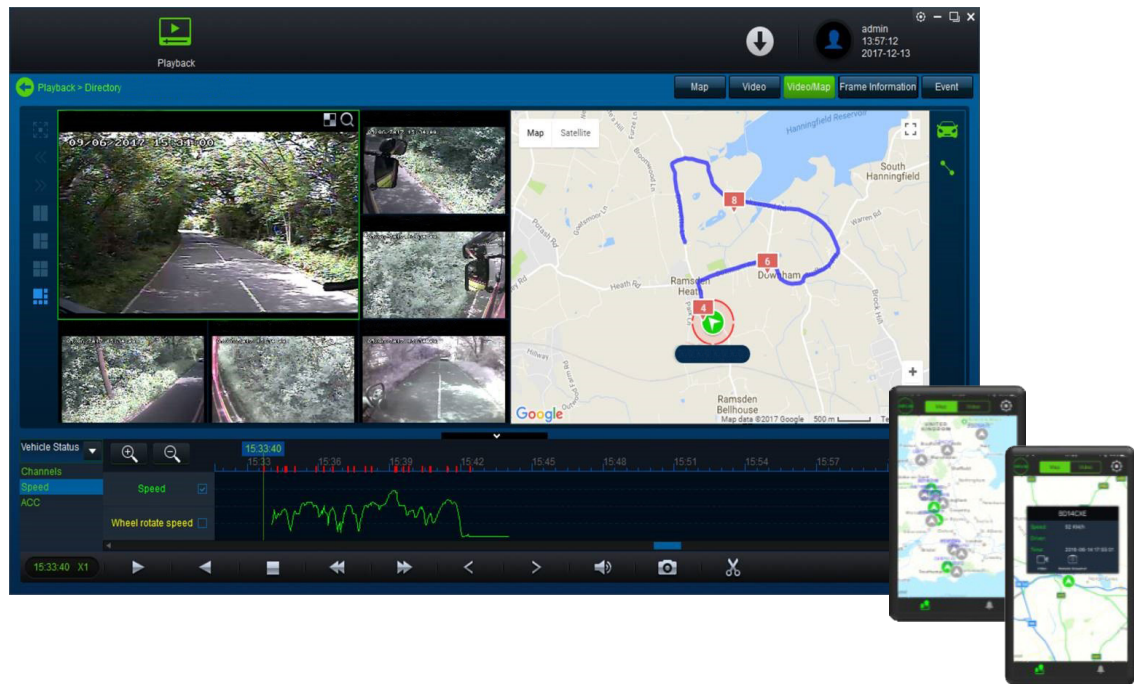
- Anti-vandal side camera
- Horizontal resolution 650TVL
- Ideal for side of vehicle



MON709-000

- 7" colour monitor (Optional)

Software



- Free of charge client viewing software is available for PC's with our surveillance systems
- Intuitive interface shows all relevant data on a single screen for the following:
 - Multi-channel video
 - Map with location and route
 - Chart of speed
 - Tabular / graphical indicator of special events (blues, siren, brakes etc).
- Search events by date, time, location and speed using the built-in Boolean operands function
- Video clips can be exported to memory sticks, external drives, packaged files or standard AVI video files

Our optional server software allows an entire fleet to be connected to a common data store to share records, and also provides a digital switch for live streaming, and download tasks for automatic transfer of vehicle data over WiFi. The system administrator can assign separate rights to each user, segregating by fleet, data types, etc. This ensures data is available only to those who need it, and helps to maintain a high level of data integrity and security on the system.

If the server solution is used, we also offer mobile apps for **iOS** and **Android** platforms to facilitate live views.



OFFICIAL FORS ASSOCIATE SUPPLIER

SPECIFY TO YOUR REQUIREMENTS

CODE 3®

ESG[®]

ECCO SAFETY GROUP



Distributed by:

///CODE 3

EMEA Headquarters: Unit 1, Green Park, Coal Road, Leeds, LS14 1FB
+44 (0)113 237 5340 | sales@eccogroup.com | www.eccosafetygroup.com

A Division of ESG

MKT011