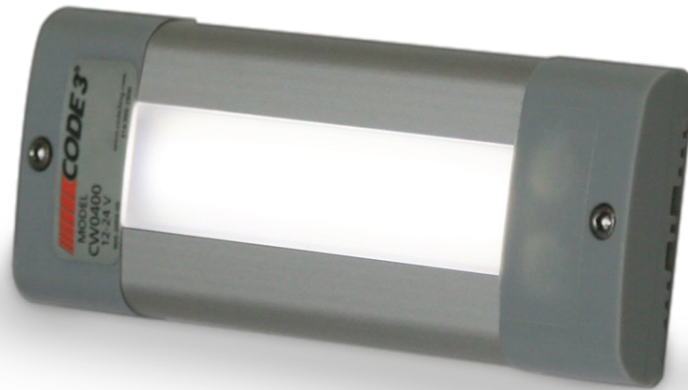
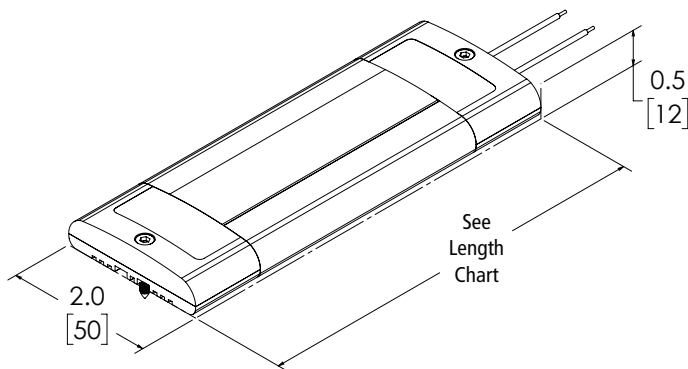


CW0400 SERIES

SURFACE MOUNT



The 400 Series compartment light delivers exceptional output and saves space with its low-profile design. Dual-colour models have an integrated switch to quickly alternate between red and white lighting. Three lengths are available, each with an integrated on/off switch.



VOLTS	12-24V
DIMS	2" H x 0.5" D 51mm H x 13mm D
CERTS	CE, R10, IP55, RoHS
DETAILS	<ul style="list-style-type: none"> Flood Compact and slim lights are only 0.5" (12mm) high when mounted

MODEL	LENGTH	TYPE	ILLUMINATION COLOURS
CW0410-WR	5.4" 137mm	10 LED	White, Red
CW0411-WR	11.8" 300mm	22 LED	White, Red
CW0412-WR	17.7" 450mm	32 LED	White, Red

+44 (0)113 237 5340 | sales@eccogroup.com