

Convene at Willis Tower is a column-free general session space for over 646 seated guests and plenty of break-out spaces, the venue is perfect for large-format summits, galas, conferences, product launches, fundraisers, town halls, and tradeshows. Featuring floor-to-ceiling windows and private outdoor terraces, both the meeting and common areas will leave a lasting impression on your attendees.

Additionally, Convene can enable all virtual and hybrid event types.

[Convene Studio](#) is a premium virtual and hybrid solution that delivers events for up to 10,000 attendees and is powered by our professional production teams and virtual event technology.

11

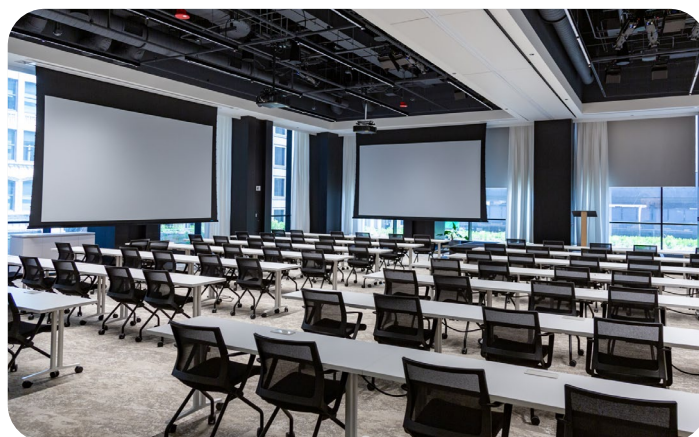
MEETING ROOMS

646

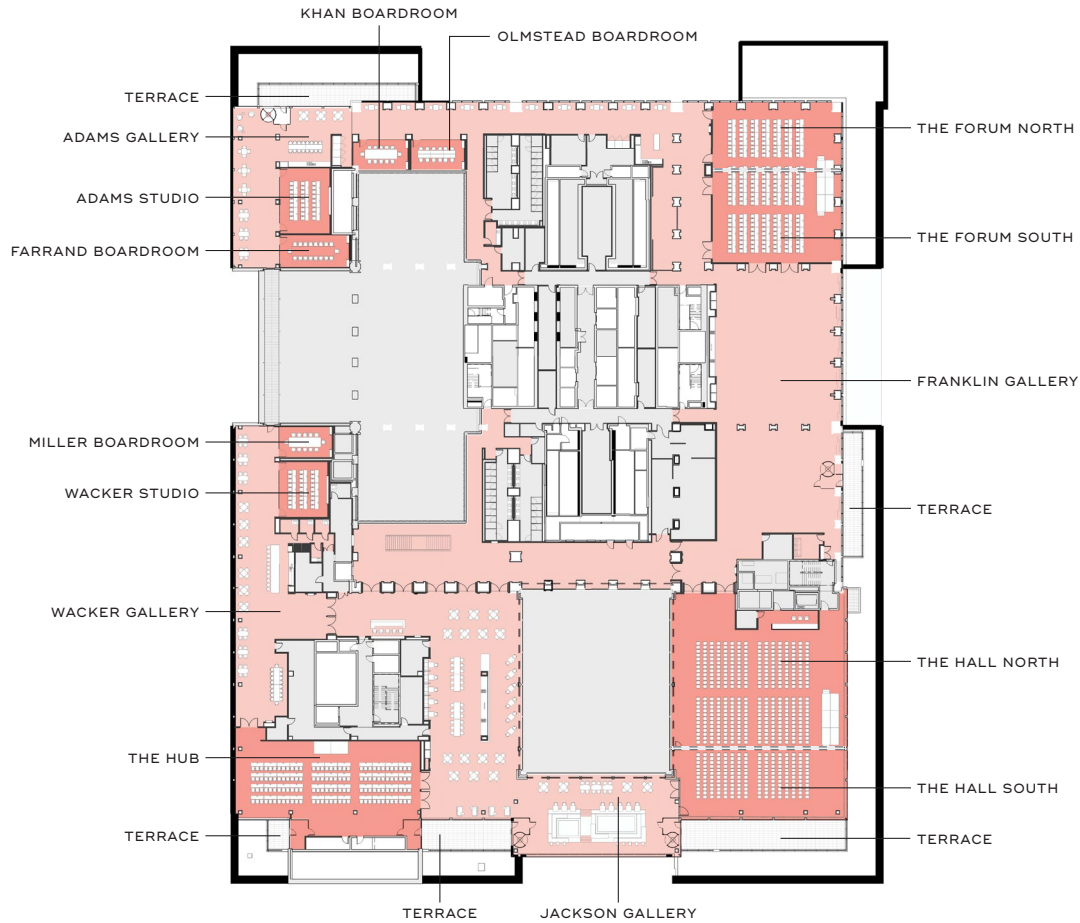
MAX ROOM CAPACITY

90,000

SQUARE FEET

HIGH-SPEED
WIFISTATE OF THE ART
TECHNOLOGYFLEXIBLE MEETING
& EVENT SPACEEVENT PLANNING
SERVICESON-SITE
GOURMET CHEFUNLIMITED ON-SITE
DRINKS & SNACKS

Floorplan & Capacities



	DIMENSION [FT]	AREA [SQ FT]	CEILING HT [FT]	RECEPTION	THEATER	CLASSROOM	CONFERENCE	ROUNDS	PODS
The Hall Combined	79' x 84'	8,019'	15'	n/a	646	351	n/a	400	336
The Hall North	79' x 54'	5,387'	15'	n/a	396	231	n/a	n/a	210
The Hall South	77' x 28'	2,632'	15'	n/a	128	90	n/a	n/a	84
The Forum Combined	56' x 71'	4,348'	15'	n/a	372	189	n/a	240	196
The Forum North	56' x 27'	1,809'	15'	n/a	143	63	n/a	n/a	56
The Forum South	56' x 42'	2,539'	15'	n/a	208	105	n/a	n/a	112
The Hub	85' x 36'	3,225'	16'	n/a	216	132	n/a	140	96
Adams Studio	23' x 30'	696'	11'	n/a	60	27	n/a	n/a	24
Wacker Studio	22' x 25'	575'	11'	n/a	50	27	n/a	n/a	24
Farrand Boardroom	23' x 14'	351'	11'	n/a	n/a	n/a	18	n/a	n/a
Miller Boardroom	30' x 14'	482'	11'	n/a	n/a	n/a	12	n/a	n/a
Khan Boardroom	21' x 14'	361'	11'	n/a	n/a	n/a	12	n/a	n/a
Olmstead Boardroom	24' x 14'	364'	11'	n/a	15	9	12	n/a	14
Jackson Gallery	n/a	7,605'	21'	n/a	n/a	n/a	n/a	n/a	n/a
Franklin Gallery	n/a	7,468'	24'	n/a	n/a	n/a	n/a	n/a	n/a
Adams Gallery	n/a	3,056'	21'	n/a	n/a	n/a	n/a	n/a	n/a
Wacker Gallery	n/a	3,374'	21'	n/a	n/a	n/a	n/a	n/a	n/a