

Willis Tower



Convene at Willis Tower is a column-free general session space for over 646 seated guests and plenty of break-out spaces, the venue is perfect for large-format summits, galas, conferences, product launches, fundraisers, town halls, and tradeshows. Featuring floor-to-ceiling windows and private outdoor terraces, both the meeting and common areas will leave a lasting impression on your attendees.

11
MEETING ROOMS

869
MAX ROOM CAPACITY

90,000
SQUARE FEET



HIGH SPEED
WIFI



STATE OF THE ART
TECHNOLOGY



FLEXIBLE MEETING
& EVENT SPACE



EVENT PLANNING
SERVICES



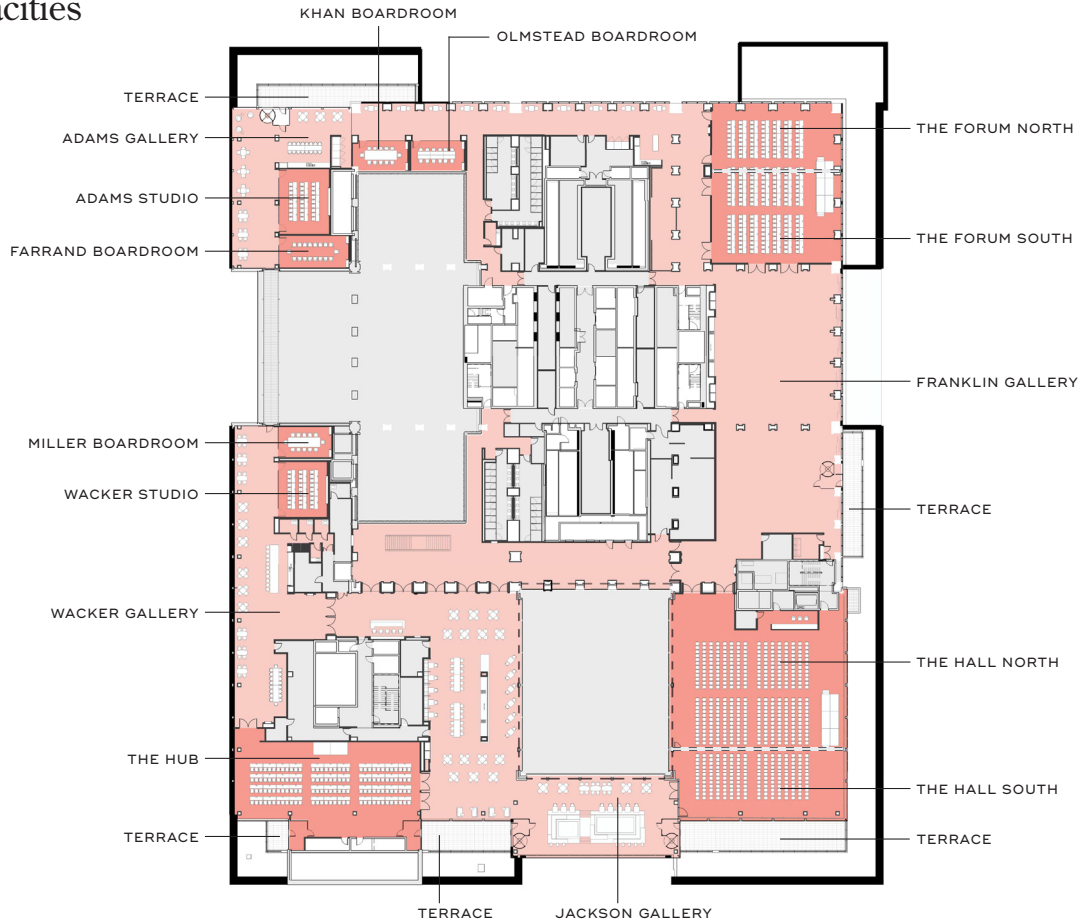
ON-SITE
GOURMET CHEF



UNLIMITED ON/SITE
DRINKS & SNACKS



Floorplan & capacities



	MAX OCCUPANCY	DIMENSION [FT]	AREA [SQ FT]	CEILING HT [FT]	RECEPTION (MAX OCCUPANCY)	THEATER	CLASSROOM	ROUNDS [8-TOP]	U-SHAPE	CONFERENCE	PODS [6-TOP]	CRESENT ROUNDS	HALF ROUNDS
The Hall	869	79' x 84'	8,019'	15'	869	646	363	420	-	-	378	280	350
Hall North	761	79' x 54'	5,387'	15'	761	432	231	260	-	-	252	210	200
Hall South	417	77' x 28'	2,632'	15'	417	204	99	120	-	-	96	98	100
Forum	661	56' x 71'	4,348'	15'	661	372	189	240	-	-	252	231	210
Forum North	281	56' x 27'	1,809'	15'	281	144	72	100	51	42	72	56	70
Forum South	380	56' x 42'	2,539'	15'	380	260	105	150	51	42	144	98	105
Hub	299	85' x 36'	3,225'	16'	299	216	132	160	54	72	132	140	140
Adam Studio	35	23' x 30'	696'	11'	60	60	27	30	21	18	35	-	-
Wacker Studio	27	22' x 25'	575'	11'	40	40	27	30	18	18	24	-	-
Miller Boardroom	17	23' x 14'	351'	11'	17	-	-	-	-	12	-	-	-
Farrand Boardroom	21	30' x 14'	482'	11'	21	-	-	-	-	18	-	-	-
Kahn Boardroom	17	21' x 14'	361'	11'	17	-	-	-	-	12	-	-	-
Olmstead Boardroom	17	24' x 14'	364'	11'	20	20	-	20	-	12	12	-	-