

# 237 Park Avenue



**Convene at 237 Park Avenue** is a modern event facility next to Grand Central Station, perfect for executive retreats, corporate off-sites, and private evening receptions. The easily accessible venue is custom-built with unique features for an elevated experience, such as a built-in fireplace, curated art, bronze beer taps, video walls, and plush lounge seating.

Experience our best in class amenities, hospitality-infused space, and seamless technology for your next meeting or event.

7  
MEETING ROOMS

---

272  
MAX ROOM CAPACITY

---

30,000  
SQUARE FEET



HIGH SPEED  
WIFI



STATE OF THE ART  
TECHNOLOGY



FLEXIBLE MEETING  
& EVENT SPACE



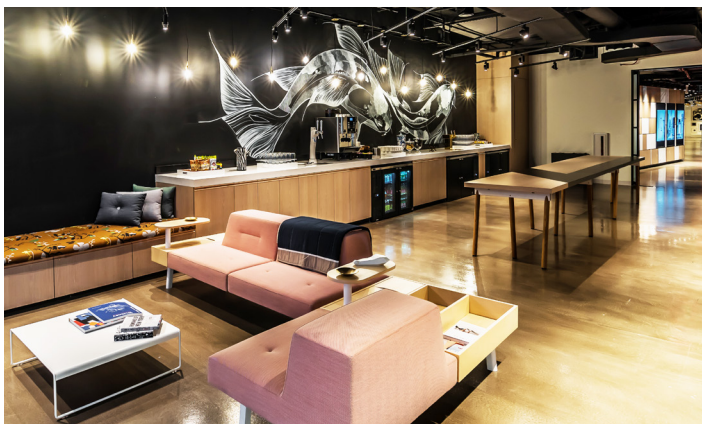
EVENT PLANNING  
SERVICES



ON-SITE  
GOURMET CHEF

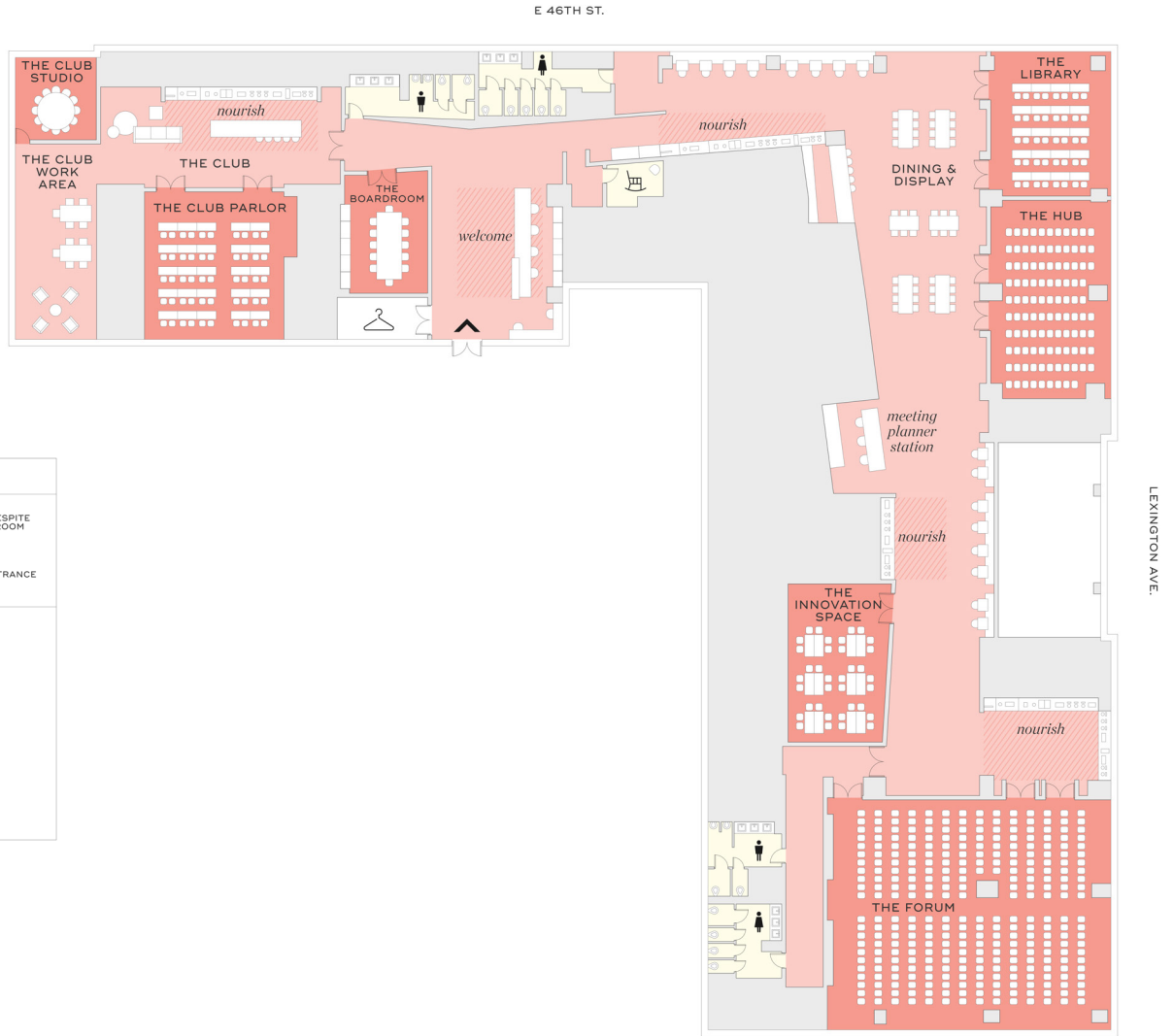


UNLIMITED ON/SITE  
DRINKS & SNACKS



## Floorplan & capacities

### 1ST FLOOR



	MAX OCCUPANCY	DIMENSION [FT]	AREA [SQ FT]	CEILING HT [FT]	RECEPTION (MAX OCCUPANCY)	THEATER	CLASSROOM	ROUNDS [8-TOP]	U-SHAPE	CONFERENCE	PODS [6-TOP]
The Forum	272	57' x 46'	2622'	14'	272	210	99	112	-	-	96
Innovation	74	28' x 25'	750'	14'	49	49	24	24	21	24	24
The Hub	74	38' x 25'	944'	14'	74	72	36	48	27	24	30
The Library	74	23' x 29'	691'	16'	74	54	24	32	21	18	36
The Boardroom	12	26' x 17'	427'	9'	12	-	-	-	-	12	-
Club Parlor	74	30' x 29'	908'	11'	84	84	48	40	27	18	54
Club Studio	10	16' x 17'	294'	23'	10	-	-	10	-	-	-
The Club Work Area	74	16' x 31'	520'	23'	74	-	-	-	-	-	-
Dining and Display	300	30' x 80'	1,850'	16'	300	-	-	-	-	-	-