

---

# THE FAMILY FOREST CARBON PROGRAM

Unlocking the carbon potential of America's family forests



American Forest Foundation



- **PROGRAM ELIGIBILITY AND GUIDELINES**



American Forest Foundation

---

# NORTHEAST REGION ELIGIBILITY

- Land is not or has not been enrolled in another forest carbon program
  - Exception for former NCX participants
- Timber harvesting restrictions must be examined for compatibility
  - Examples may include ordinances, conservation easements, and designated no harvest areas



# NORTHEAST REGION ELIGIBILITY

## GROWING OLDER FORESTS & ENHANCE YOUR WOODLAND

- Private landowners who own at least 30 contiguous forested acres
  - Exceptions to the minimum acreage must be approved
  - Contiguous is defined as an ownership block for a single deeded entity touching in at least one corner
    - Non-contiguous parcels containing greater than 30 acres eligible for FFCP are okay to enroll, so long as the deeded owner remains the same.
    - Exceptions to non-contiguous beyond this guidance must be approved.



# NORTHEAST REGION ELIGIBILITY

## GROWING OLDER FORESTS & ENHANCE YOUR WOODLAND

- Naturally occurring maple-beech-birch FIA forest type group with a minimum of 60 sqft/ac.
  - Forest Type Group Key can be located in the forester manual online.
  - Plantations and grazed woodlands are ineligible



---

# NORTHEAST REGION ELIGIBILITY

## Growing Older Forests and Enhance Your Woodland

- Quadratic mean diameter of 8" or higher
- 2,000 bdf/ac. or higher



# NORTHEAST REGION ELIGIBILITY

## Inclusions of ineligible forests in the FFCP Project Area

- Forested regions that are otherwise ineligible for FFCP may be incorporated into an eligible FFCP Project under the following circumstances:
  - **Ineligible FIA Forest type groups**, are forested areas within the eligible FFCP project boundary, that consist of less than 50% naturally occurring maple-beech-birch FIA forest type groups that meet the minimum requirements of 60 sqft/ac., 2,000 bdf/ac., and 8" QMD and are fewer than 25 acres total.
  - **Small area inclusions**, are forested areas within the eligible FFCP project area boundary, that are less than 5 acres in size and do not meet the minimum requirements.
- **The combination of Ineligible FIA forest type groups, and small area inclusions may not exceed 25 acres of a total FFCP Project Area.**









# — ELIGIBILITY EXAMPLE

## ACCEPTABLE FFCP PROJECT

- Appropriate use of including ineligible acreage on a contiguous parcel (touching in at least one corner)
  - Greater than 30ac. are eligible for FFCP
    - Naturally occurring maple-beech-birch with a minimum basal area per acre of 60, a QMD of at least 8", with at least 2,000 bdf/acre
  - Ineligible FTG + small understocked forested areas are less than 25 ac. total for the project
  - Small area inclusions are understocked recently harvested forested areas are less than 5ac. total and contained entirely within the eligible FFCP project area boundary.
  - Ineligible FTG meets volume requirement are less than 20ac. total and contained entirely within the eligible FFCP project area boundary.

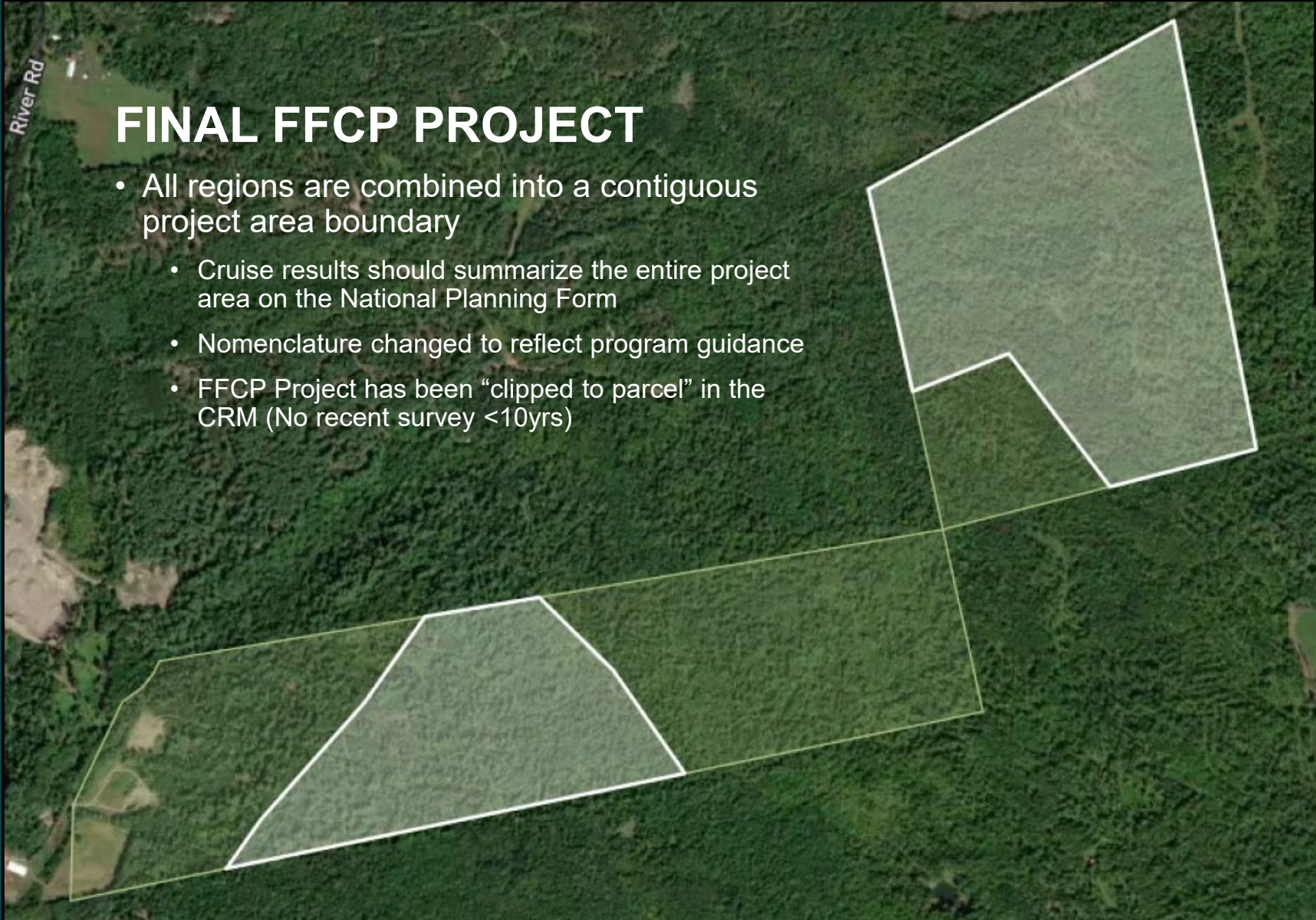


	Eligible FFCP	48.88 acres (Calculated using WGS 84 UTM 19N)
	Eligible FFCP	77.28 acres (Calculated using WGS 84 UTM 19N)
	Understocked - Recent Harvest	1.92 acres (Calculated using WGS 84 UTM 19N)
	Understocked - Recent Harvest	2.28 acres (Calculated using WGS 84 UTM 19N)
	Ineligible FTG - Meets Stocking	14.70 acres (Calculated using WGS 84 UTM 19N)
	Ineligible FTG - Meets Stocking	5.04 acres (Calculated using WGS 84 UTM 19N)







# FINAL PROJECT FROM EXAMPLE



## FINAL FFCP PROJECT

- All regions are combined into a contiguous project area boundary
  - Cruise results should summarize the entire project area on the National Planning Form
  - Nomenclature changed to reflect program guidance
  - FFCP Project has been “clipped to parcel” in the CRM (No recent survey <10yrs)

	FFCP Project: 31391 - 1	96.17 acres (Calculated using WGS 84 UTM 19N)
	FFCP Project: 31391 - 1	53.92 acres (Calculated using WGS 84 UTM 19N)



# GROWING OLDER FORESTS GUIDELINES

## Harvesting Activity

- Forest management activities that are applied to trees (living or dead) greater than 5” diameter in breast height in the contract area are not allowed, unless a waiver to improve forest health is obtained from the program.

Forest health concerns that the program may issue a waiver for include:

- storm damage, forest insect or pathogen outbreak, controlling a forest insect or pathogen outbreak, controlling invasive plants that inhibit the growth of native seedlings or sapling.
- Forest management activities that do not involve cutting trees greater than 5” diameter in breast height are allowed.  
Example: fencing to control deer or moose browse.



# GROWING OLDER FORESTS GUIDELINES

## Firewood for Personal Use

- Removal of cordwood from the contract area for personal use must follow guidance below

## Annual Allowance of Firewood in the Contract Area

- 5 cords for the first 200 acres
- Allowed an additional 5 cords for every additional 100 acres enrolled
- 25 cords maximum

## Guidance

- Removals must be evenly distributed throughout the contract area
- Any size deadwood may be removed for personal use
- Live trees under 12" diameter at breast height may be removed for personal use



# GROWING OLDER FORESTS GUIDELINES

## Future Development

- Any future plans for development should be disclosed during enrollment (ROWs, cabins, food plots)
- Development post enrollment may be subjected to a penalty or could result in a breach of contract

## Compatibility with Current Use

- Restrictions on harvesting activity may make this practice incompatible with current use programs.
- Foresters who participate should understand how this practice may be or may not be compatible with current use programs in their respective state and should advise landowners appropriately if they are interested in enrolling in both.



# ENHANCE YOUR WOODLAND GUIDELINES

## Harvesting Activity

- Sustainable harvesting and firewood cutting for personal use are allowed in the contract area, so long as they follow the guidelines below
- The guidelines below must be followed when forest management activities are applied to trees greater than 5" diameter in breast height in the contract area



# ENHANCE YOUR WOODLAND GUIDELINES

## Sustainable Harvesting

- Must hire a qualified 3rd party forester to conduct 90<sup>th</sup> percentile pre- and post-harvesting reports
- May not remove more than 25% of the total basal area within the harvest area (in an individual harvest or cumulatively over time)
- May not remove more than 15% of the total basal area in the entire area enrolled in this practice.
- May not reduce the quadratic mean diameter beyond 10%
- May not create canopy gaps larger than 5 ac. in size, or retain fewer than 4 large (as defined by being in the upper 20% of the basal area) trees per acre within harvested areas.
- May not harvest in a manner contradictory to state best management practices for water quality and/or protection of habitat



# ENHANCE YOUR WOODLAND GUIDELINES

## Firewood for Personal Use

- Removal of cordwood from the contract area for personal use must follow guidance below

## Annual Allowance of Firewood in the Contract Area

- 5 cords for the first 200 acres
- Allowed an additional 5 cords for every additional 100 acres enrolled
- 25 cords maximum

## Guidance

- Removals must be evenly distributed throughout the contract area
- Any size deadwood may be removed for personal use
- Live trees under 12" diameter at breast height may be removed for personal use



# ENHANCE YOUR WOODLAND GUIDELINES

## Future Development

- Any future plans for development should be disclosed during enrollment (ROWs, cabins, food plots)
- Development post enrollment may be subjected to a penalty or could result in a breach of contract

## Compatibility with Current Use

- Foresters who participate should understand how this practice may be or may not be compatible with current use programs in their respective state and should advise landowners appropriately if they are interested in enrolling in both.





---

# PRACTICE COMBINATION

## Growing Older Forests and Enhance Your Woodland

- Landowners may combine the two practices within a single project submitted by the consulting forester
- Work with the landowner to consider forest conditions, current use interest or enrollment, and apply the two practices where the forest would benefit the most.



---

# THE FAMILY FOREST CARBON PROGRAM

Unlocking the carbon potential of America's family forests



American Forest Foundation