
THE FAMILY FOREST CARBON PROGRAM

Unlocking the carbon potential of America's family forests



American Forest Foundation



- **PROGRAM ELIGIBILITY AND GUIDELINES**



American Forest Foundation

MIDWEST REGION ELIGIBILITY

- Land is not or has not been enrolled in another forest carbon program
 - Exception for former NCX participants
- Timber harvesting restrictions must be examined for compatibility
 - Examples may include ordinances, conservation easements, and designated no harvest areas



MIDWEST REGION ELIGIBILITY

- Private landowners who own at least 30 contiguous forested acres
 - Exceptions to minimum acreage must be approved
 - Contiguous is defined as an ownership block for a single deeded entity touching in at least 1 corner
- Naturally occurring maple-beech-birch and/or oak-hickory forest type groups with 90sqft/ac.
 - Forest Type Group Key can be located in the forester manual online.
 - Plantations and grazed woodlands are ineligible



MIDWEST REGION ELIGIBILITY

Inclusions of ineligible forests in the FFCP Project Area

- Forested regions that are otherwise ineligible for FFCP may be incorporated into an eligible FFCP Project under the following circumstances:
 - Ineligible FIA Forest type groups, are forested areas within the eligible FFCP project boundary, that consist of less than 50% naturally occurring maple-beech-birch or oak-hickory FIA forest type groups that meet the minimum basal area requirement of 90 sqft/ac. and are fewer than 25 acres total.
 - Small area inclusions, are forested areas within the eligible FFCP project area boundary, that are less than 5 acres in size and do not meet the minimum basal area requirement of 90 sqft/ac. and are fewer than 5 acres total.
- **The combination of Ineligible FIA forest type groups, and small area inclusions may not exceed 25 acres of a total FFCP Project Area.**









— ELIGIBILITY EXAMPLE

ACCEPTABLE FFCP PROJECT

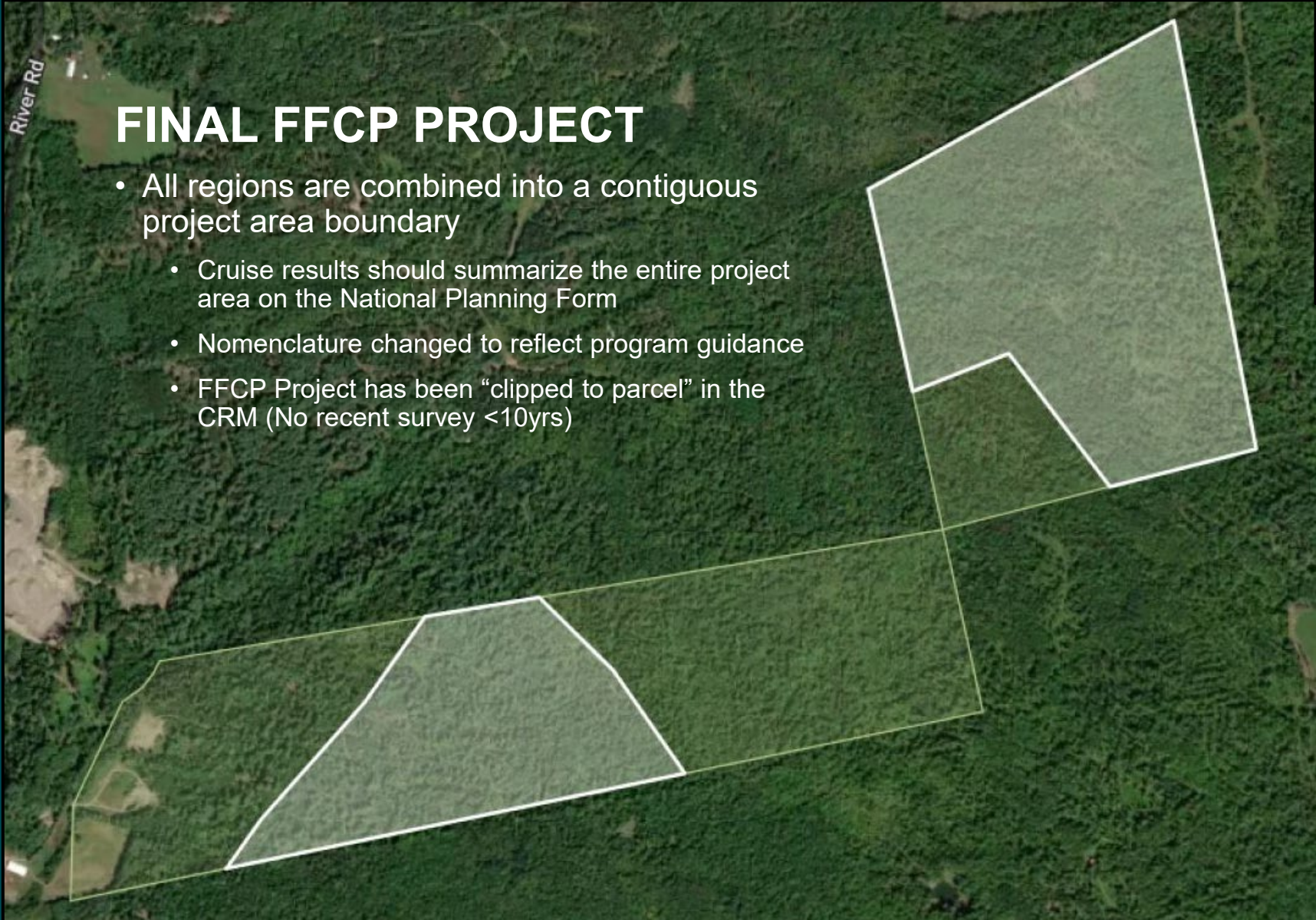
- Appropriate use of including ineligible acreage on a contiguous parcel (touching in at least one corner)
 - Greater than 30ac. are eligible for FFCP
 - Naturally occurring maple-beech-birch or oak-hickory FTG that is 90 sqft/ac.
 - Ineligible FTG + small understocked forested areas are less than 25 ac. total for the project
 - Small area inclusions are understocked recently harvested forested areas are less than 5ac. total and contained entirely within the eligible FFCP project area boundary.
 - Ineligible FTG meets volume requirement are less than 20ac. total and contained entirely within the eligible FFCP project area boundary.



	Eligible FFCP	48.88 acres (Calculated using WGS 84 UTM 19N)
	Eligible FFCP	77.28 acres (Calculated using WGS 84 UTM 19N)
	Understocked - Recent Harvest	1.92 acres (Calculated using WGS 84 UTM 19N)
	Understocked - Recent Harvest	2.28 acres (Calculated using WGS 84 UTM 19N)
	Ineligible FTG - Meets Stocking	14.70 acres (Calculated using WGS 84 UTM 19N)
	Ineligible FTG - Meets Stocking	5.04 acres (Calculated using WGS 84 UTM 19N)





— FINAL PROJECT FROM EXAMPLE



FINAL FFCP PROJECT

- All regions are combined into a contiguous project area boundary
 - Cruise results should summarize the entire project area on the National Planning Form
 - Nomenclature changed to reflect program guidance
 - FFCP Project has been “clipped to parcel” in the CRM (No recent survey <10yrs)

	FFCP Project: 31391 - 1	96.17 acres (Calculated using WGS 84 UTM 19N)
	FFCP Project: 31391 - 1	53.92 acres (Calculated using WGS 84 UTM 19N)



GUIDELINES

Harvesting Activity

- Sustainable harvesting and firewood cutting for personal use are allowed in the contract area, so long as they follow the guidelines below
- The guidelines below must be followed when forest management activities are applied to trees greater than 5" diameter in breast height in the contract area

Sustainable Harvesting

- Must hire a qualified 3rd party forester to conduct 90th percentile pre- and post-harvesting reports
- Must wait until the harvest unit reaches 130 sqft/ac
- May not remove more than 25% of the total basal area within the contract area (in an individual harvest or cumulatively over time)
- May not reduce the quadratic mean diameter beyond 10%
- May not harvest in a manner contradictory to state best management practices for water quality and/or protection of habitat



GUIDELINES

Firewood for Personal Use

- Removal of cordwood from the contract area for personal use must follow guidance below

Annual Allowance of Firewood in the Contract Area

- 5 cords for the first 200 acres
- Allowed an additional 5 cords for every additional 100 acres enrolled
- 25 cords maximum

Guidance

- Removals must be evenly distributed throughout the contract area
- Any size deadwood may be removed for personal use
- Live trees under 12" diameter at breast height may be removed for personal use



GUIDELINES

Future Development

- Any future plans for development should be disclosed during enrollment (ROWs, cabins, food plots)
- Development post enrollment may be subjected to a penalty or could result in a breach of contract

Compatibility with State Forest Tax Programs

- Foresters who participate should understand how this practice may be or may not be compatible with current use programs in their respective state and should advise landowners appropriately if they are interested in enrolling in both.



THE FAMILY FOREST CARBON PROGRAM

Unlocking the carbon potential of America's family forests



American Forest Foundation