

---

# THE FAMILY FOREST CARBON PROGRAM

Unlocking the carbon potential of America's family forests



American Forest Foundation



- **PROGRAM ELIGIBILITY AND GUIDELINES**



American Forest Foundation

---

# APPALACHIAN REGION ELIGIBILITY

- Land is not or has not been enrolled in another forest carbon program
  - Exception for former NCX participants
- Timber harvesting restrictions must be examined for compatibility
  - Examples may include ordinances, conservation easements, and designated no harvest areas



# APPALACHIAN REGION ELIGIBILITY

## GROWING MATURE FORESTS

- Private landowners who own at least 30 contiguous forested acres
  - Exceptions to the minimum acreage must be approved
  - Contiguous is defined as an ownership block for a single deeded entity touching in at least one corner
    - Non-contiguous parcels containing greater than 30 acres eligible for FFCP are okay to enroll, so long as the deeded owner remains the same.
    - Exceptions to non-contiguous beyond this guidance must be approved.
- Naturally occurring hardwood forest type groups with 4,000 bdf/ac.
  - Forest Type Group Key can be located in the forester manual online.
  - Plantations and grazed woodlands are ineligible.



# APPALACHIAN REGION ELIGIBILITY

## Inclusions of ineligible forests in the FFCP Project Area

- Forested regions that are otherwise ineligible for FFCP may be incorporated into an eligible FFCP Project under the following circumstances:
  - Ineligible FIA Forest type groups, are forested areas within the eligible FFCP project boundary, that consist of less than 50% naturally occurring hardwood(s) FIA forest type groups that meet the minimum boardfoot requirement of 4,000 bdft/ac. and are fewer than 25 acres total.
  - Small area inclusions, are forested areas within the eligible FFCP project area boundary, that are less than 5 acres in size and do not meet the minimum boardfoot requirement of 4,000 bdft/ac. and are fewer than 5 acres total.
  - **The combination of Ineligible FIA forest type groups, and small area inclusions may not exceed 25 acres of a total FFCP Project Area.**









# — ELIGIBILITY EXAMPLE

## ACCEPTABLE FFCP PROJECT

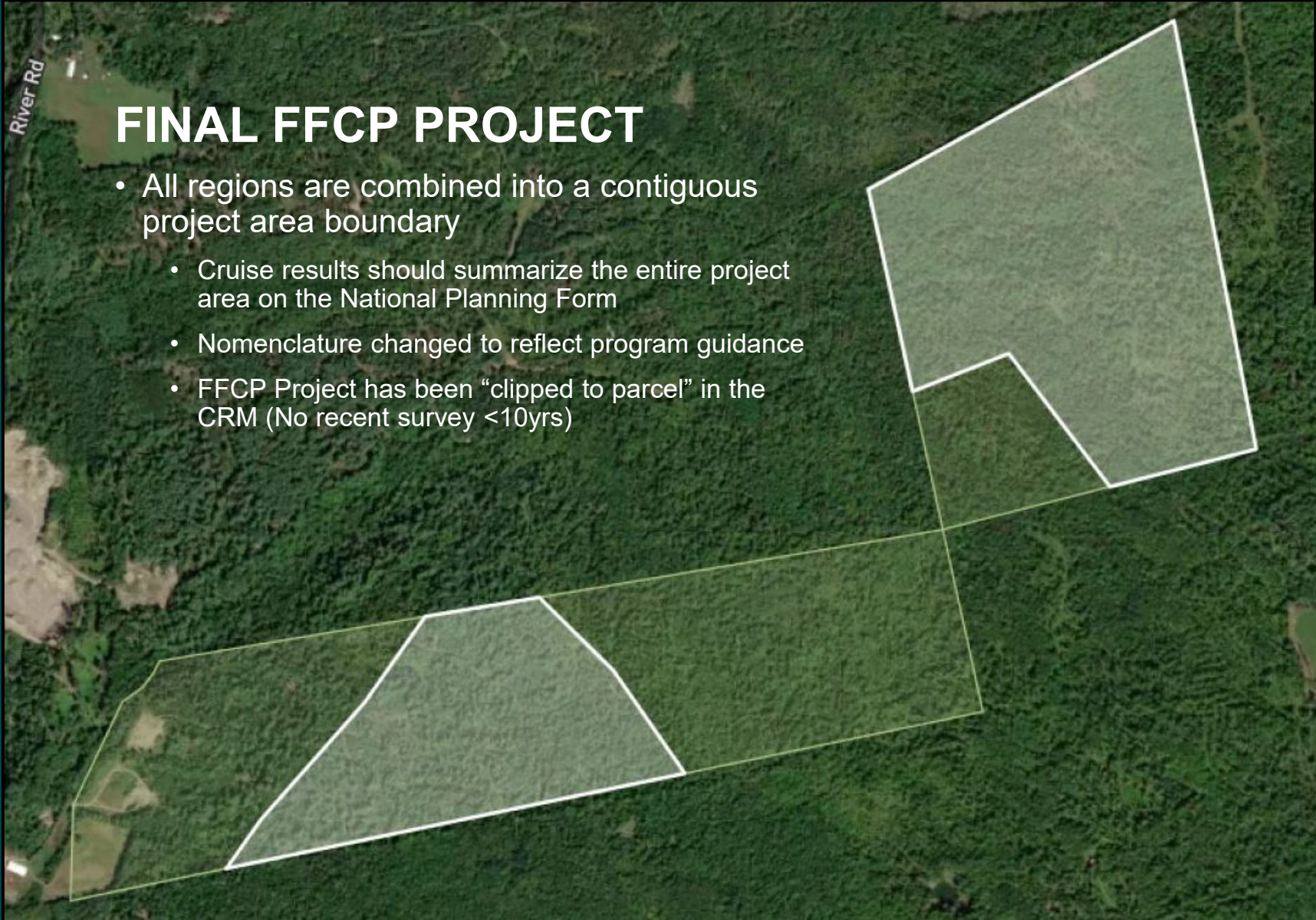
- Appropriate use of including ineligible acreage on a contiguous parcel (touching in at least one corner)
  - Greater than 30ac. are eligible for FFCP
    - Naturally occurring hardwoods with at least 4 MBF
  - Ineligible FTG + small understocked forested areas are less than 25 ac. total for the project
  - Small area inclusions are understocked recently harvested forested areas are less than 5ac. total and contained entirely within the eligible FFCP project area boundary.
  - Ineligible FTG meets volume requirement are less than 20ac. total and contained entirely within the eligible FFCP project area boundary.



	Eligible FFCP	48.88 acres (Calculated using WGS 84 UTM 19N)
	Eligible FFCP	77.28 acres (Calculated using WGS 84 UTM 19N)
	Understocked - Recent Harvest	1.92 acres (Calculated using WGS 84 UTM 19N)
	Understocked - Recent Harvest	2.28 acres (Calculated using WGS 84 UTM 19N)
	Ineligible FTG - Meets Stocking	14.70 acres (Calculated using WGS 84 UTM 19N)
	Ineligible FTG - Meets Stocking	5.04 acres (Calculated using WGS 84 UTM 19N)





# — FINAL PROJECT FROM EXAMPLE



## FINAL FFCP PROJECT

- All regions are combined into a contiguous project area boundary
  - Cruise results should summarize the entire project area on the National Planning Form
  - Nomenclature changed to reflect program guidance
  - FFCP Project has been “clipped to parcel” in the CRM (No recent survey <10yrs)

	FFCP Project: 31391 - 1	96.17 acres (Calculated using WGS 84 UTM 19N)
	FFCP Project: 31391 - 1	53.92 acres (Calculated using WGS 84 UTM 19N)



# GUIDELINES

## Harvesting Activity

- Sustainable harvesting and firewood cutting for personal use are allowed in the contract area, so long as they follow the guidelines below
- The guidelines below must be followed when forest management activities are applied to trees greater than 5" diameter in breast height in the contract area

## Sustainable Harvesting

- Must hire a qualified 3rd party forester to conduct 90<sup>th</sup> percentile pre- and post-harvesting reports
- May not remove more than 25% of the total basal area within the contract area (in an individual harvest or cumulatively over time)
- May not reduce the quadratic mean diameter beyond 10%
- May not harvest in a manner contradictory to state best management practices for water quality and/or protection of habitat





# GUIDELINES

## Firewood for Personal Use

- Removal of cordwood from the contract area for personal use must follow guidance below

## Annual Allowance of Firewood in the Contract Area

- 5 cords for the first 200 acres
- Allowed an additional 5 cords for every additional 100 acres enrolled
- 25 cords maximum

## Guidance

- Removals must be evenly distributed throughout the contract area
- Any size deadwood may be removed for personal use
- Live trees under 12" diameter at breast height may be removed for personal use



---

# GUIDELINES

## Future Development

- Any future plans for development should be disclosed during enrollment (ROWs, cabins, food plots)
- Development post enrollment may be subjected to a penalty or could result in a breach of contract

## Compatibility with Current Use

- Foresters who participate should understand how this practice may be or may not be compatible with current use programs in their respective state and should advise landowners appropriately if they are interested in enrolling in both.



---

# THE FAMILY FOREST CARBON PROGRAM

Unlocking the carbon potential of America's family forests



American Forest Foundation