

## WHAT IS INTERNAL MEDICINE?

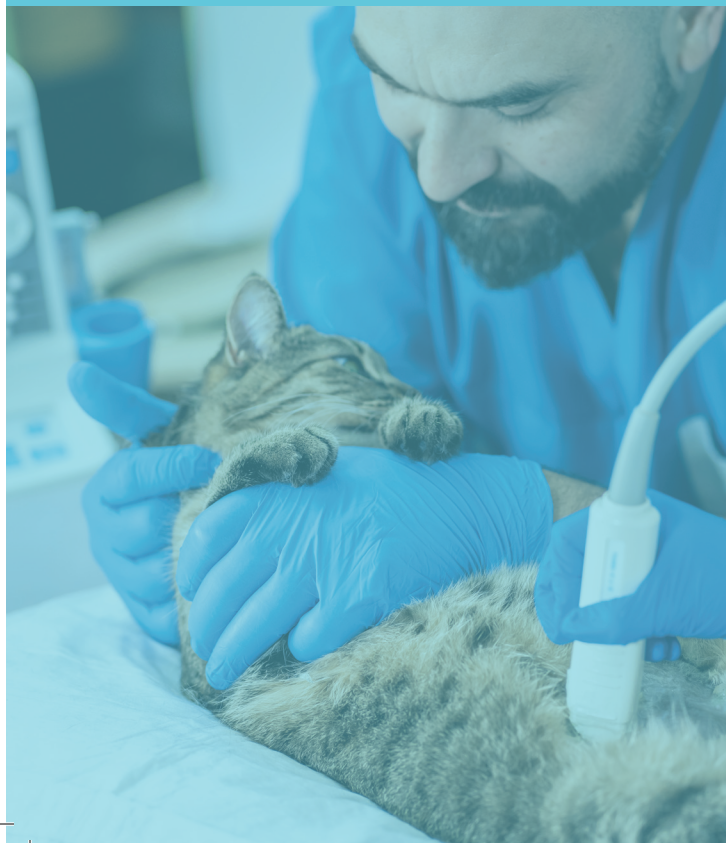


Internal Medicine focuses on the diagnosis and treatment of non-surgical conditions.

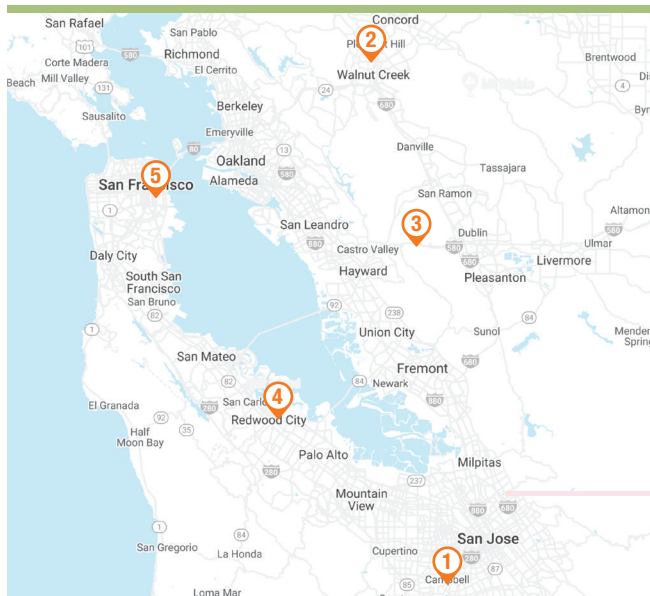
SAGE internists work on a daily basis with gastrointestinal, renal, respiratory, immune, hepatic, and endocrine systems. Internists care for patients with acute, sometimes life-threatening illnesses, or with complicated and chronic issues.

Endoscopy, rhinoscopy, bronchoscopy and thoracic and abdominal sonogram are a few examples of the procedures our internists regularly perform to examine internal structures of the body.

Internists help coordinate the care of the patient, many times working with other specialties such as surgery, oncology, and neurology for total patient care.



## SAGE LOCATIONS



**1 SAGE CAMPBELL**  
907 Dell Ave  
Campbell, CA 95008  
408-343-7243



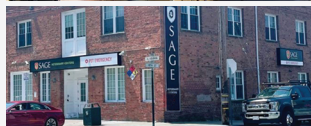
**2 SAGE CONCORD**  
2055 Meridian Park Blvd  
Concord, CA 94520  
925-627-7243



**3 SAGE DUBLIN**  
7121 Amador Plaza Rd  
Dublin, CA 94568  
925-574-7243



**4 SAGE REDWOOD CITY**  
934 Charter St  
Redwood City, CA 94063  
650-417-7243



**5 SAGE SAN FRANCISCO**  
600 Alabama St  
San Francisco, CA 94110  
415-566-0540

Visit our website at [sagecenters.com](http://sagecenters.com) for more information.



**SAGECENTERS.com**

# INTERNAL MEDICINE



COMMITTED TO ADVANCING VETERINARY MEDICINE AND IMPROVING PET CARE



**SAGE**  
VETERINARY CENTERS

## WHAT IS SPECIALTY CARE?

Veterinary medicine has become specialized, just as human care has. Specialty care is the practice of providing advanced services and procedures to diagnose, treat and manage a pet's health issues.

Clients bring their pets to our Internal Medicine specialists for many reasons. In some cases, their pet is sick and they don't know why—they are seeking a diagnosis and next steps. In other cases, a primary care veterinarian has found issues that need specialized care and they refer pets to SAGE.



**SAGE internists are well-known in the community for providing top-quality, advanced care.**

These board-certified specialists bring the highest level of training to their work, and have completed focused coursework, an internship, and a 2-3 year residency program, in addition to their veterinary degree requirements.



## OUR PARTNERSHIP WITH PRIMARY CARE VETS

**SAGE Internal Medicine specialists have worked side-by-side with Bay Area primary care veterinarians for decades.**

Communication is a big part of how we work with everyone involved in an animal's care. Our specialists send digital medical records and home-care instructions to a pet's primary care veterinarian after each visit or re-check appointment. And, our team of technicians and administrators ensures seamless communication and hand-off of information between medical staff, whether at SAGE or another practice.

## WHAT WE DO

Internists use their breadth of experience and a range of diagnostic techniques to determine the cause of a pet's illness.

### Common conditions treated by these vets include:

- + Gastrointestinal and digestive disorders (esophageal, stomach and intestines)
- + Liver and pancreatic diseases
- + Endocrine or hormone diseases, including thyroid disorders, Cushing's Syndrome, diabetes, and Addison's disease
- + Urinary tract diseases
- + Kidney disease
- + Autoimmune diseases
- + Respiratory diseases (nose, airway and lung)

## COMMON PROCEDURES

We provide advanced and therapeutic services using state-of-the-art equipment.

### The most common Internal Medicine procedures:

#### ULTRASOUND

Ultrasound uses sound waves to produce images of organs and structures in the body. This tool is very useful for evaluating the size and appearance of organs, as well as assessing the presence of masses or fluid. Specialists also use ultrasound to get samples for biopsies or fine-needle aspirations.

#### RHINOSCOPY & BRONCHOSCOPY

These procedures evaluate the nasal passages, mouth, and airway, and are commonly performed to remove foreign bodies or to obtain tissues samples to aid in the diagnosis of respiratory diseases.

#### UPPER & LOWER ENDOSCOPY

Endoscopy evaluates the stomach, small intestine and large intestine. Specialists use a flexible instrument called an endoscope with a lighted, miniature camera to evaluate the body's internal structures. This is a minimally invasive procedure that enables specialists to look closely at problem areas, obtain biopsies, or remove foreign bodies.

#### COMPUTED TOMOGRAPHY (CT) & MAGNETIC IMAGING (MRI)

CT and MRI technology help specialists get a clearer view of organs, soft tissue, and bone. CT tech is available at all of our hospitals. Our Campbell and Redwood City hospitals partner onsite with AnimalScan to provide MRI services.

