

WHAT IS AN EMERGENCY?



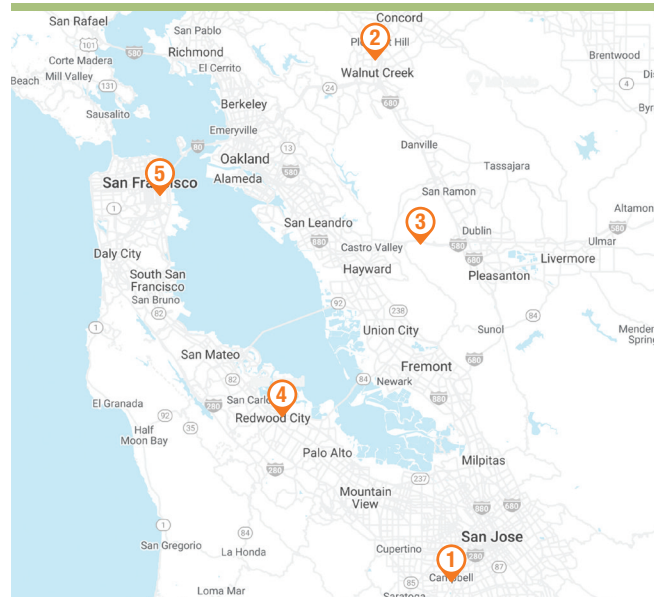
Any of the following are reasons to call or come in to see us:

- + Changes to oral gum color
- + Difficulty breathing
- + Allergic reaction (hives, facial swelling, severe itching or red eyes)
- + Exposure to any chemicals
- + Ingestion of toxins, poisonous plants, or household medications
- + Ingestion of foreign material
- + Weakness/changes in alertness
- + Seizures, loss of balance, and inability to walk
- + Trembling or shaking
- + Pain, discomfort, or lameness
- + Straining to urinate
- + Distended or bloated abdomen
- + Persistent vomiting, diarrhea, or non-productive retching
- + Difficulty delivering kittens or puppies
- + Exposure to high temperatures
- + Bleeding
- + Hit by car
- + Fall from height
- + Bite wounds from other animals
- + Broken bones
- + Behavior changes or actions that just don't feel right in your mind

Common causes for ER visits include vomiting or diarrhea, ingestion of chemicals or toxins, and trauma, such as being hit by a car. Don't hesitate to see a vet if you suspect your pet is in distress!



SAGE LOCATIONS



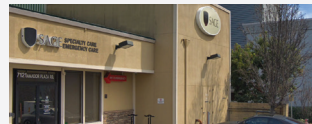
1 SAGE CAMPBELL
907 Dell Ave
Campbell, CA 95008
408-343-7243



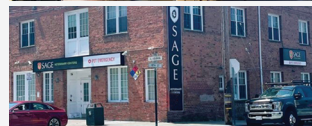
2 SAGE CONCORD
2055 Meridian Park Blvd
Concord, CA 94520
925-627-7243



3 SAGE DUBLIN
7121 Amador Plaza Rd
Dublin, CA 94568
925-574-7243



4 SAGE REDWOOD CITY
934 Charter St
Redwood City, CA 94063
650-417-7243



5 SAGE SAN FRANCISCO
600 Alabama St
San Francisco, CA 94110
415-566-0540

Visit our website at sagecenters.com for more information.



SAGECENTERS.com

URGENT CARE & EMERGENCY SERVICES



THE BEST CARE
FOR YOUR BEST FRIEND



SAGE
VETERINARY CENTERS

WHY SAGE IN AN EMERGENCY?

SAGE Veterinary Centers is a multi-location practice dedicated to providing the highest level of care. Our hospitals include more than 80 highly-trained veterinarians and a team of knowledgeable, compassionate support staff. Our emergency team is comprised of seasoned doctors who are dedicated to the field of emergency medicine. Most of our Emergency veterinarians have interned for an additional year after veterinary school, and several have completed three-year residencies and are board certified specialists in Emergency and Critical Care.



Our emergency services are available 24 hours a day, 365 days a year.

A trip to the ER can be routine or involved. Often times, problems can be solved in one visit and your pet can return home. We treat many illnesses that require routine testing and medications. With a good home care plan set in place by our team, you will be fine to leave with your pet and recheck with your primary veterinarian in a few days.

When the problem is more involved, and especially if it's life-threatening, our critical care equipment and expertise come into play. Critical care is the continuous support and monitoring of the animal's needs. Those needs can include oxygen delivery, IV fluids, blood or plasma transfusions, surgery, nutritional delivery and, of course, TLC.

URGENT CARE FOR MINOR ILLNESSES

SAGE offers **same-day Urgent Care services at all of our hospitals for concerning, but not critical health issues.**

Our Urgent Care department helps us reduce wait times for patients, and provides our clients with added convenience.

In human medicine, urgent care provides a convenient way for patients to be seen for problems that may not warrant a trip to the ER. SAGE's Urgent Care department fills the same need for your pet.

URGENT CARE EXAMPLES

Here are some examples of non-emergency Urgent Care appointments:

- + Coughing or sneezing
- + Superficial cuts or wounds
- + Minor vomiting or diarrhea
- + Loss of appetite
- + Trembling or shaking
- + Discomfort or mild lameness
- + Tick removal
- + Ear and skin infections
- + Irritated or red eyes
- + Any signs that are troubling to you or your pet

FREQUENTLY ASKED QUESTIONS



What is the difference between Urgent Care and Emergency Care?

The difference between Urgent Care and the Emergency Room is the severity of the health problem. If the condition is life-threatening, go to the Emergency Room. If the condition is a minor illness or injury, take advantage of the same-day convenience of setting an appointment with our Urgent Care department.



How long will I have to wait to be seen if it is an emergency?

Upon arrival, a veterinary technician will triage your pet. The technician will assess the degree of urgency and take a brief history. They will evaluate your pet's breathing patterns and heart rhythm, and will check for obvious signs of trauma, fractures, or injuries.

The seriousness of your pet's medical condition will determine how quickly a doctor will meet with you. A patient that arrives after you may be seen first due to the nature of their condition. Our goal is to provide the best possible care and treatment for your pet as quickly as we can.



SAGE
VETERINARY CENTERS