



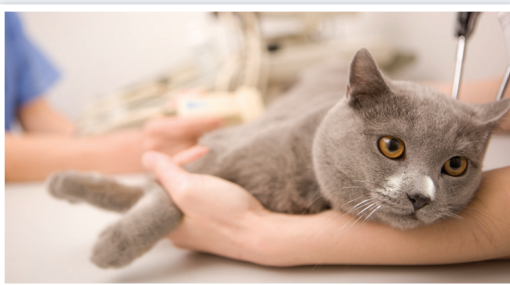
PET EMERGENCY?

Call us anytime, day or night, if you think your pet may be sick or injured. While we can't make recommendations or diagnoses over the phone, our experienced staff can help provide more information on our services.



(856) 429-4394

Our veterinarians and technicians are specially trained in emergency and critical care. Together, they handle a wide range of medical and surgical emergencies. **You can rest assured that your best friend will be treated with love and compassion.**



 **Red Bank**
VETERINARY HOSPITALS™
MOUNT LAUREL

2051 Briggs Road, Mount Laurel, NJ 08054
(856) 429-4394 • redbankvet.com

Identifying a Pet Emergency

The following signs and symptoms may mean your pet is experiencing a crisis and you should seek immediate veterinary care.

- Any difficulties breathing: short or shallow breaths, increased effort, gagging, choking
- Weakness, inability to walk, sudden collapse
- Seizures lasting more than 3 minutes, or multiple seizures in one day
- Non-productive retching/vomiting, swollen or distended abdomen
- Allergic reactions including swelling, rashes or itching
- Excessive or persistent bleeding
- Diabetic animals refusing food
- Inability to urinate, straining to urinate
- Pregnant dogs/cats that have gone more than 3-4 hours between deliveries
- Bumping into things, becoming disoriented
- Experienced some kind of trauma (i.e; being hit by a car, blunt object penetration, falling more than a few feet)
- Ingestion of toxins, such as antifreeze, rat poison, household cleaners, medication not prescribed
- Seeing symptoms of heatstroke such as heavy panting, lethargy, or vomiting



2051 Briggs Road, Mount Laurel, NJ 08054
(856) 429-4394 • redbankvet.com