

## CRITICAL CARE CASES WE SEE



Our veterinarians recommend admittance to the CCU for any of the following cases:

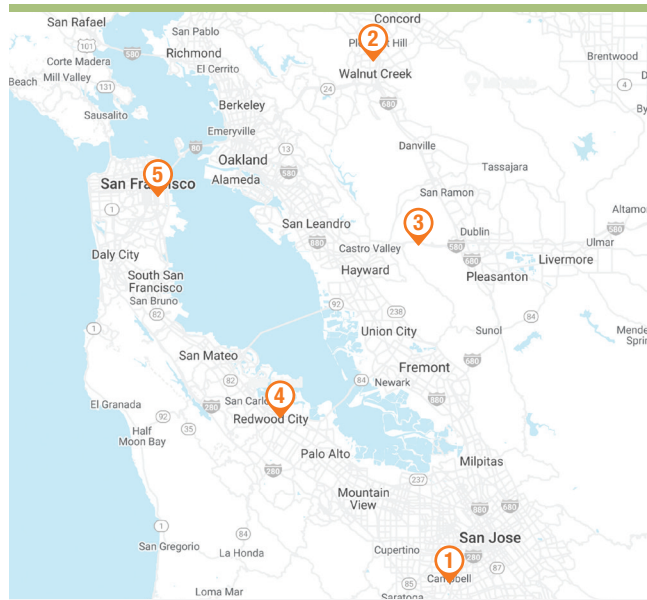
- ✦ Severe bite wounds
- ✦ Rattlesnake bites
- ✦ Hit by car
- ✦ Traumatic injuries such as a fall from height
- ✦ Paralysis
- ✦ Severe allergic reactions/anaphylaxis
- ✦ Extreme toxicities (ingesting mushrooms, rat bait, snail bait, medications, household poisons)
- ✦ Cluster seizures
- ✦ Parvovirus
- ✦ Sepsis (infection)
- ✦ Foreign body obstruction
- ✦ Severe gastroenteritis (vomiting and diarrhea)
- ✦ Pneumonia
- ✦ Heart failure
- ✦ Feline asthma
- ✦ Severe anemia or low platelets
- ✦ Kidney failure
- ✦ Shock
- ✦ Inability to urinate

## PAIN MANAGEMENT

SAGE maintains a strong focus on pain management to make sure your pets are comfortable and maintain lower stress levels during their treatment.

Our emergency and critical care doctors work closely with our board-certified veterinary anesthesiologist to ensure that patients receive multi-modal pain control.

## SAGE LOCATIONS



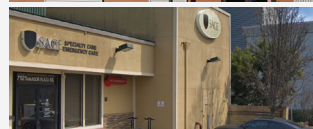
**1 SAGE CAMPBELL**  
907 Dell Ave  
Campbell, CA 95008  
408-343-7243



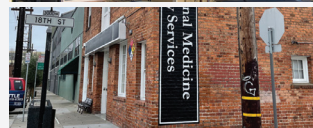
**2 SAGE CONCORD**  
1410 Monument Blvd  
Concord, CA 94520  
925-627-7243



**3 SAGE DUBLIN**  
7121 Amador Plaza Rd  
Dublin, CA 94568  
925-574-7243



**4 SAGE REDWOOD CITY**  
934 Charter St  
Redwood City, CA 94063  
650-417-7243



**5 SAGE SAN FRANCISCO**  
600 Alabama St  
San Francisco, CA 94110  
415-566-0540

Visit our website at [sagecenters.com](http://sagecenters.com) for more information.



**SAGECENTERS.com**

# CRITICAL CARE



THE BEST CARE  
FOR YOUR BEST FRIEND



**SAGE**  
VETERINARY CENTERS

## WHAT IS CRITICAL CARE?

Just like humans, pets can experience illnesses and injuries that go beyond an emergency and into the realm of critical care. And, just as we see in human medicine, addressing these illnesses and injuries requires advanced training, equipment and expertise.



**Critical care in veterinary medicine is the continuous support and monitoring of an animal's needs when they are very sick or injured.**

Those needs can include oxygen delivery, IV fluids of many types, blood or plasma transfusions, surgery, and, of course, TLC.

When pet owners are faced with a severe or complex illness or injury, they can turn to SAGE Veterinary Centers 24/7, 365 days a year. Each of our facilities contains a fully functioning, 24-hour emergency and critical care unit (CCU) with a veterinarian on duty at all times.



**Pets in the SAGE CCU are monitored 24 hours a day.**

Our Emergency and Critical Care teams are comprised of seasoned doctors who are dedicated to the field of emergency medicine. Several have completed residencies and are board certified specialists in Emergency and Critical Care. These specialists, or “Criticalists,” use specialized treatments in complex cases, and their training and expertise helps to ensure the best possible outcome.

## FOCUS ON COLLABORATION

SAGE is devoted to providing advanced, compassionate, and collaborative care. On the clinical floor, collaboration is seamless between our specialty departments.

Patients generally come in through the emergency department. A team of veterinarians and technicians dedicated to emergent and urgent care will quickly evaluate your pet. Our criticalists and emergency doctors work with our Internal Medicine, Cardiology, Surgery, Neurology, Dermatology, and other specialty veterinarians to provide a full spectrum of treatment.

The Critical Care team’s ability to work across specialties – all under one roof – is unique and can make a huge difference for pets with complex illnesses or injuries.



**SAGE staffs our CCU around the clock with seasoned vets and techs who specialize in meeting the unique needs of critical care patients.**

## FREQUENTLY ASKED QUESTIONS



**How long will I have to wait to be seen?**



Upon arrival, a veterinary technician will triage your pet. The technician will assess the degree of urgency and take a brief history. They will evaluate your pet’s breathing patterns and heart rhythm, and will check for obvious signs of trauma, fractures, or injuries.

The seriousness of your pet’s medical condition will determine how quickly a doctor will meet with you. A patient that arrives after you may be seen first due to the nature of their condition. Our goal is to provide the best possible care and treatment for your pet as quickly as we can.



**How much do critical care services cost?**

Costs for critical care services vary based on what treatment is needed. An initial examination fee covers the physical examination and doctor consultation.

You will then be given a written estimate for any additional costs and services. If your pet is admitted to the hospital, you will be asked to leave an initial payment. The total balance is due upon release. Should you require flexibility with your bill, we offer the option to apply for credit through a third-party company.



**SAGE**  
VETERINARY CENTERS