



Care's Pet Gazette

Bravecto Quantum

Bravecto Quantum is a new injection for dogs that protects against fleas and ticks for one full year. The active ingredient, Fluralaner, is the same medication that is in Bravecto but is timed released. Fluralaner is in a drug class called Isoxazoline. Other medications with this drug class include Simparica and Nexgard. Bravecto Quantum is the only once yearly injectable product on the market. Given the increase in Colorado's flea and tick populations, we at Care Animal Hospital believe this product is a good option to protect our dogs. When paired with ProHeart, a once yearly heartworm preventative, this allows us to provide protection without the need for monthly pills against fleas, ticks, and heartworms. Please ask your veterinarian if Bravecto Quantum is a good options for your dog.

1

Bravecto Quantum

2

FACT OR FICTION?

How does weight affect lifespan.

3

Condition of the Month

Mast Cell Tumor

4

Nutrition

Raw Corn



CONVENIENT

No need to remember monthly treatments as just one dose provides year-long protection.



EFFECTIVE

Just one dose kills fleas and helps control home flea infestations for a full year, thereby reducing the health threat fleas pose to both dogs and humans.!



VET ADMINISTERED

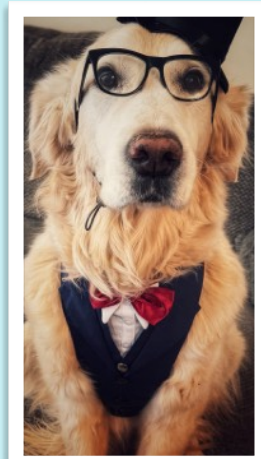
Administered once a year by your veterinarian for peace of mind.

FACT OR FICTION WITH PROFESSOR HAMBONE

Pets that are overweight have a shorter life expectancy.

Answer: Fact

A 14-year study performed by the Purina Institute found that when Labrador Retrievers were fed to maintain a lean body condition from puppyhood and throughout their life, they lived longer and better lives. On average, the lean-fed Labrador Retrievers lived 1.8 years longer. These leaner dogs also showed delayed onset and reduced severity of osteoarthritis as well as delayed onset of other chronic and age related diseases.



Condition of the Month: Mast Cell Tumors

Mast Cell Tumors are one of the most common types of cancers that affect our dog and less commonly our cat population. They are particularly common in our bully breeds which include Boxers, Bulldogs, Pit Bulls and French Bulldogs. The masses are most commonly hairless, round, red to pink growths on the skin (Fig 1), although there is a subset that grow below the skin. Mast cells are a round cell that is part of the allergic cascade. These growths can be itchy and change in size. They are generally all considered malignant meaning they have the capacity to spread. Early detection and aggressive surgical removal is key in managing these tumors. Mast cells are typically diagnosed using a test called an FNA or Fine Needle Aspiration. This test involves placing a small needle into the mass and collecting cells. These cells will then be placed on a slide and reviewed under a microscope. Mast cells are very easy to diagnose using this technique as the cells contain many small granules (Fig 2). If you notice any odd masses on your pet we would strongly encourage that you schedule an appointment.



Fig 1: Mast Cell Tumor physical appearance

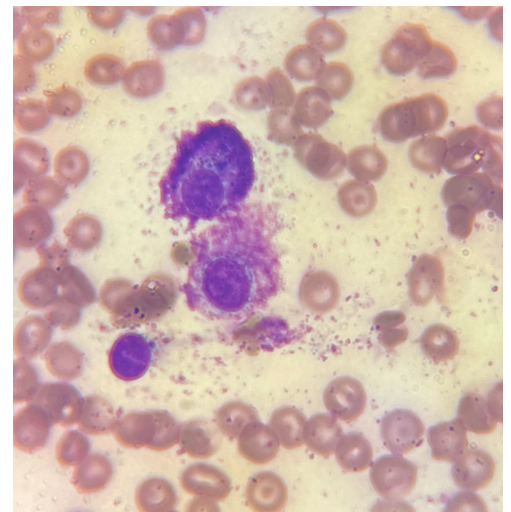


Fig 2: Mast Cell Tumor Cytology

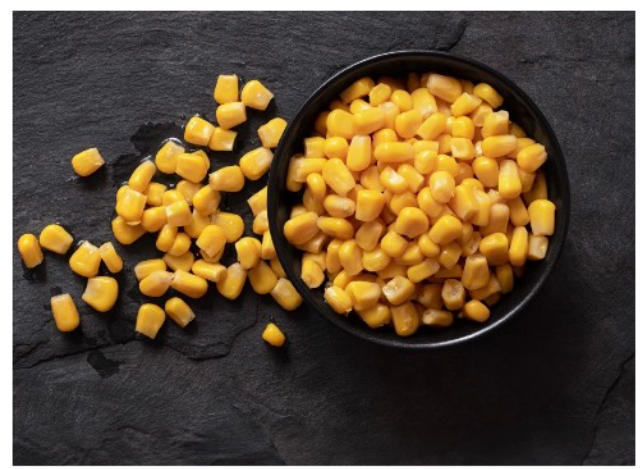
PICTURE OF THE MONTH

Do you have a an exceptionally photogenic pet? If so send us your best picture. If we feature your pet in the next newsletter you will received a \$25 credit on your account. This month we are featuring Haley. She is a 9 week old Australian Shepherd mix. Ruti loves her new family of dogs, cats and children and her favorite food is goose



Nutrition: Corn

Corn is a very common ingredient in many pet foods including high quality prescription foods. Unfortunately, there has been a significant amount of misinformation regarding this ingredient. It has been called a filler and a source of food allergies. These statements are false and misleading. Corn is a highly digestible carbohydrate that contains essential fatty acids, vitamins, natural antioxidants, fiber,



and even protein. Recent research has also shown that corn is less allergenic than many common ingredients (chicken, beef, soy, wheat, and eggs). Corn is plentiful and grown in the US, making it an excellent ingredient choice for pet food manufactures.