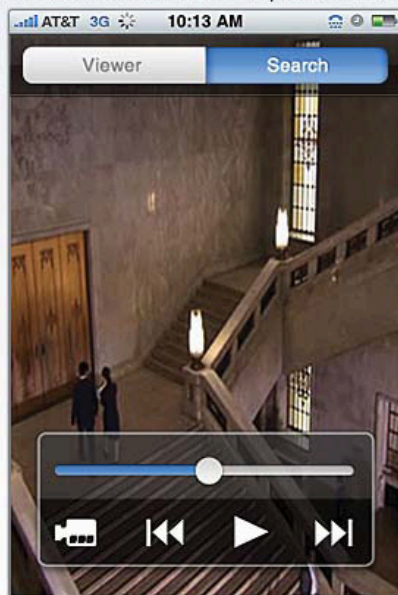
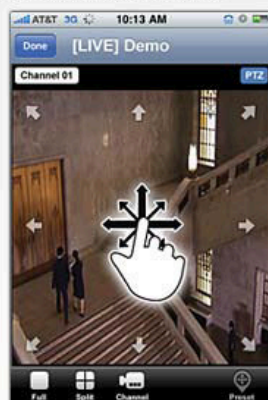


1 2 3 How to search and PTZ control.

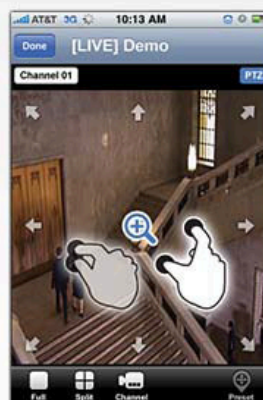
- 1 A single channel search is also available. In order to search data of a channel, touch the screen of live view and touch 'Search' tab located on top of the screen. Click channel icon to view another channel in search mode.



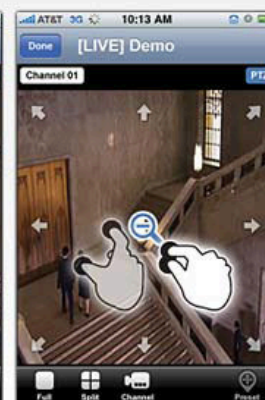
- 2 A single channel PTZ is simply controlled by using touch screen. First, select a channel, which is a PTZ control camera connected to, for one channel PTZ control in full screen mode.
To move PTZ camera, move your finger tip to the desired direction without losing contact on the screen surface.
In order to Zoom In, touch surface with two fingers and bring them closer together.
In order to zoom out, touch surface with two fingers and move them apart.
In order to move PTZ camera to a preset location, select 'PRESET' tab and select a preset channel no. to move.



PTZ



Zoom In



Zoom Out

7.2 Android Application Software

1 How to install DW VMAX 2 3

1 Press 'Market' icon



2 Press 'Search' icon

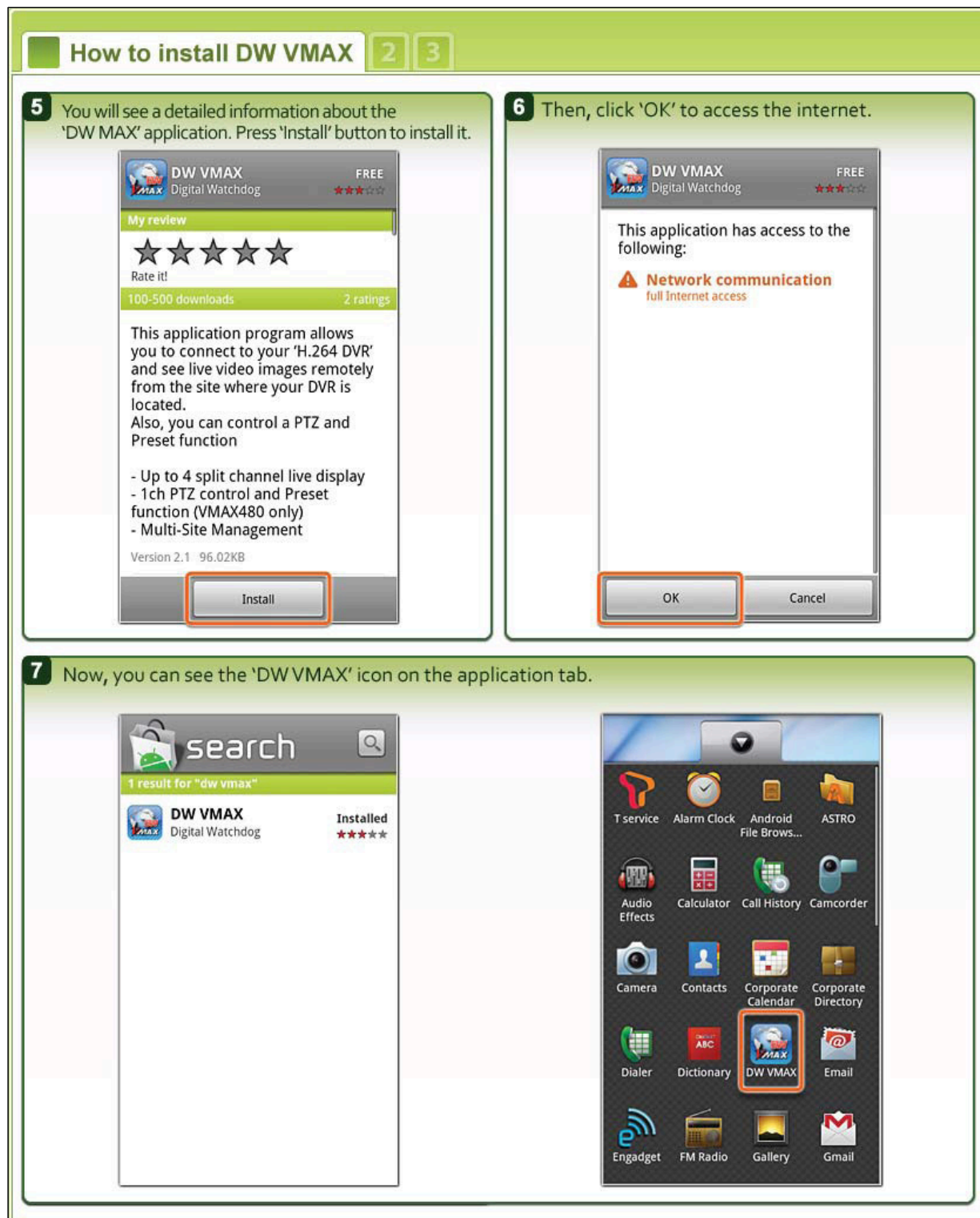


3 Type in 'DW MAX' and click 'Search' icon.



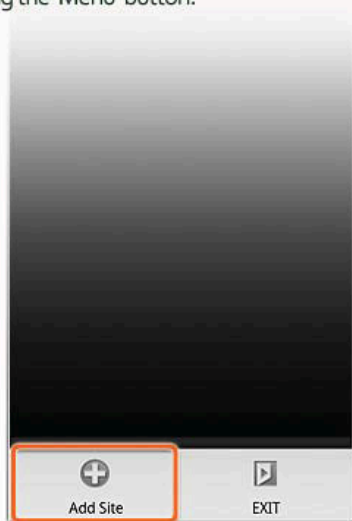
4 Then, you will see the 'DW VMAX' application icon on the screen as shown below. Select the application.



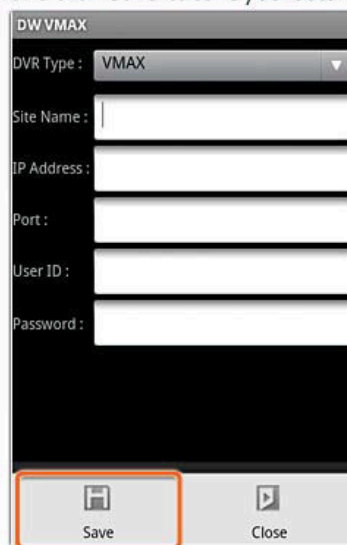


1 2 How to connect and view 3

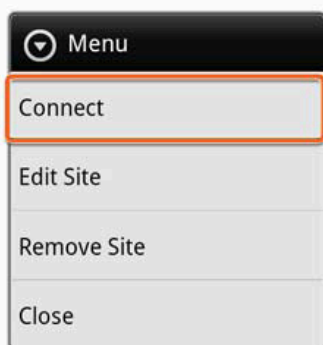
- 1** After running the application, press the 'Menu' button on your phone to bring up the 'Add Site' button. Then, press 'Add Site' button.
*Please view your phone manual, if you have trouble finding the 'Menu' button.



- 2** First, select DVR Type: VMAX or VMAX480. Input the new site information that you would like to connect to. Press 'Menu' button to bring 'Save' button and click 'Save' to save your settings.



- 3** Press and hold the desired site in the site list for the connection menu to appear. Press 'Connect' button to connect.



- 4** You will see a single channel live view or four split channel live view of the connected site. Press a desired channel button (Ch1~Ch16) or four-split channel mode to view another set of channels.



1 **2** How to connect and view **3**

5 Press a desired channel button (ch1~ch16) or four split channel mode to view another channels as shown below.

