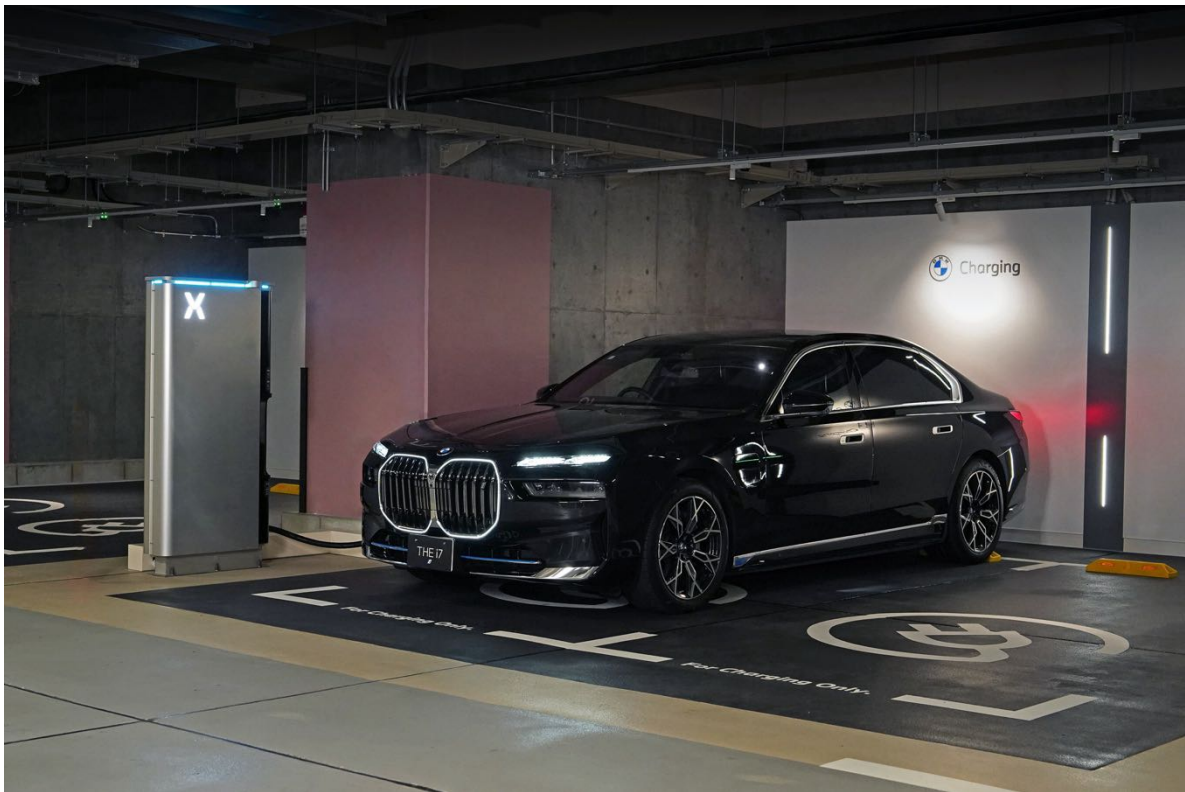


## PowerX Opens Ultrafast EV Charge Station at Azabudai Hills as Part of BMW Destination Charging

PowerX Inc. (Headquarters: Minato City, Tokyo; President and CEO: Masahiro Ito) will open an ultrafast EV charging station at Azabudai Hills (Minato City, Tokyo), which is operated by Mori Building Co., Ltd. (Headquarters: Minato City, Tokyo; President and CEO: Shingo Tsuji). This station is part of the BMW Destination Charging Project led by BMW Japan Corp. (Headquarters: Minato City, Tokyo; Representative Director, President and CEO: Masatoshi Hasegawa) and will commence operations on June 1, 2024, coinciding with the opening of the brand store "FREUDE by BMW" at Azabudai Hills.



This charging station will be accessible to all electric vehicle owners, not just BMW and MINI drivers. Users can reserve charging sessions via the PowerX App, ensuring a seamless and wait-free experience. The installed chargers support ultrafast charging with a maximum output of 150kW, making them among the fastest in Japan. Users can charge for up to 60 minutes, allowing them to enjoy the shops, restaurants, and cafes at Azabudai Hills while their vehicles charge.

Starting with this station, PowerX plans to expand the installation of ultrafast EV charging systems, including at BMW/MINI dealerships and other locations, to contribute to the development of a reliable infrastructure for EV users.

### Station Info: BMW Destination Charging - Azabudai Hills Station

Address	Azabudai Hills, P1 Basement 4th Floor Parking, Parking Space:E-95 1-3-1 Azabudai, Minato City, Tokyo 106-0041
Product	PowerX Hypercharger Compact
Charging Capacity	1 vehicle
Operation Hours	24 hours
Target Users	Owners of electric vehicles compatible with the CHAdeMO charging standard Some vehicle models may not be supported.
Pricing Information	Free during the "Try! PowerX" promotion After the promotion ends, usage will be charged per kWh. Details will be announced in the PowerX app.
Operational Start Date	June 1, 2024
Project Owner	BMW Japan Corp.
Operation and Maintenance	PowerX Inc.

### About PowerX Inc.

Company Name	PowerX, Inc.
Representative	Masahiro Ito, President and CEO
Headquarters	Midtown Tower 43F, Akasaka 9-7-1, Minato City, Tokyo, Japan
Main Business	R&D and Production of Energy Storage System Solutions and Power Transfer Vessels, EV Charging Station Service, Renewable Energy and Power Supply Business
Website	<a href="http://power-x.jp/">http://power-x.jp/</a>

### About BMW Japan Corp.

Company Name	BMW Japan Corp.
Representative	Masatoshi Hasegawa (Representative Director, President and CEO)
Headquarters	Tokyo Shiodome Building, 1-9-1 Higashi-Shimbashi, Minato City, Tokyo
URL	<a href="https://www.bmw.co.jp/">https://www.bmw.co.jp/</a>

### About Mori Building Co., Ltd.

Company Name	Mori Building Co., Ltd.
Representative	Shingo Tsuji (President and CEO)
Headquarters	Roppongi Hills Mori Tower, 6-10-1 Roppongi, Minato-ku, Tokyo, Japan
URL	<a href="https://www.mori.co.jp/">https://www.mori.co.jp/</a>

### For media inquiries regarding this release, please contact:

PowerX Inc. CEO Office Corporate Communications: Kotaro Otsu

Phone: 050-1754-0205

Email: [pr@power-x.jp](mailto:pr@power-x.jp)