




New Zealand
Tertiary College

Early Childhood Education

Prospectus





Empowering students to
care, educate and serve
meaningfully and effectively.

New Zealand Tertiary College (NZTC) is a private college specialising in early childhood teacher education.

The college was founded in 1982. Since then we have gained significant sector recognition for our graduates and New Zealand Qualifications Authority (NZQA) approval for our qualifications.

New Zealand Tertiary College continues to be a leader through our commitment to high quality early childhood professional and teacher education qualifications that reflect the ever evolving needs of the sector.



Welcome to **New Zealand Tertiary College**

A career in early childhood education is like no other – it contributes to the future through the care and education of our next generation.

Our mission is to empower you with the knowledge, beliefs, skills and attitude that will enable you to achieve your full potential as an effective early childhood educator. In choosing New Zealand Tertiary College as your place of study, you choose a college with a long history and tradition of commitment to outstanding early childhood teacher education.

We support our students to care, educate and serve meaningfully and effectively guided by our values of Vision, Competence, Partnership and Heart, that are at the core of our college and are a fundamental part of our identity.

Whether you are new to tertiary study or a graduate looking to upskill with an internationally recognised, professional early childhood qualification, we offer a program to support your learning style and lifestyle.

Welcome to New Zealand Tertiary College – we look forward to guiding you in your professional journey.

Contents

Welcome to NZTC	5
Why study with us?	8
Quality assurance & recognition	9
Our values	10
Career opportunities	11
Discover New Zealand	12
Student support	14
Study options	16
Our qualification pathways	17
Frequently asked questions	21
Postgraduate qualifications	22
Master of Teaching and Learning (Early Childhood Education)	24
Master of Education (Early Childhood Education)	26
Master of Early Childhood Education	28
Postgraduate Diploma in Education (Early Childhood Education)	30
Postgraduate Certificate in Education (Leadership and Management)	32
Undergraduate qualifications	34
Graduate Diploma in Teaching (Early Childhood Education)	36
Bachelor of Teaching (Early Childhood Education)	38
Bachelor of Education (Early Childhood Education)	40
New Zealand Diploma in Early Childhood Education and Care (Level 6)	42
New Zealand Diploma in Early Childhood Education and Care (Level 5)	44
Additional information	46
Frequently asked questions	48
How to become an NZTC student	50
Find out more	52



Quality assurance & recognition

External evaluations consistently speak to the outstanding quality of NZTC's programs. The New Zealand government body that reviews the quality of educational programs, the New Zealand Qualifications Authority (NZQA), continues to score NZTC with a Category One result of "Highly Confident" in educational performance and "Highly Confident" in self-assessment, the highest possible ranking.

The college's programs are also listed on the New Zealand Qualifications Framework, the definitive source for quality assured qualifications in New Zealand.

National

All NZTC qualifications are approved by the New Zealand Qualifications Authority (NZQA). NZQA has put in place systems to guarantee the consistency of training and assessment, ensuring New Zealand qualifications are valued as credible and robust nationally and internationally.

International

Our Bachelor of Teaching (Early Childhood Education) and Graduate Diploma in Teaching (Early Childhood Education) qualifications are approved by the Australian Children's Education and Care Quality Authority (ACECQA) – the body which oversees the national quality framework for the Australian early childhood sector, meaning NZTC graduates who wish to apply for early childhood teacher status in Australia can do so without having to apply for an assessment of their qualifications.

The college's programs are also accredited by a wide-range of international organisations and government bodies, including: the Chinese Ministry of Education, The University Grants Commission – Sri Lanka, Malaysian Qualifications Agency & Malaysia Ministry of Higher Education, and German higher education database Anabin.



“As a graduate living in Melbourne, having my qualification on Australia's list of approved qualifications is a great bonus... it had a positive impact on my salary and employability.”

Harpreet Singh | Bachelor of Teaching (Early Childhood Education)

Why study with us?

A leader in early childhood teacher education

NZTC has been specialising in early childhood teacher education for over 40 years, offering high quality, professional qualifications that reflect the evolving needs of the early childhood education sector.

Gain New Zealand teacher registration

Graduates of our Bachelor of Teaching (ECE), Graduate Diploma in Teaching (ECE), and Master of Teaching and Learning (ECE) qualifications are eligible to apply for New Zealand teacher registration with the Teaching Council of Aotearoa New Zealand (Teaching Council). Teacher registration improves your job prospects and your ability to apply for residency if you are not from New Zealand.

Flexible modes of learning

NZTC offers a choice of study options designed to suit different learning styles and lifestyles, ensuring you receive a quality and enjoyable learning experience.

Manage your commitments

Our online learning environment NZTC Online allows you to balance your work and family commitments so you can study your way, in your time, from anywhere you have internet access.

New Zealand Qualifications Authority (NZQA) approved

Our programs of study blend theoretical and real-world learning to ensure you get the very best learning experience to benefit the children and their families in your care. NZTC is accredited by NZQA to deliver NZQA approved qualifications that are internationally recognised.



Our values

Vision - Ngā Tumanako
We are committed to fostering innovation which empowers our learners and the community to thrive in an ever-changing world.

Competence - Matautau
We provide career focused education that builds skills and confidence, empowering learners to make a positive social impact through a commitment to excellence.

Partnership - Whakahoahoa
We value building strong and respectful relationships by appreciating each partner's unique needs, strengths and contributions.

Heart - Ngakau
We ensure every learner, their whānau, and community feel valued through authentic connections that nurture belonging, wellbeing, and success.



Career opportunities

More than ever before early childhood education is considered a profession, with specialist early childhood qualifications, research options, conferences and other professional development opportunities.

A career in early childhood education makes a real difference by helping to shape the future of our next generation.

Contributing to the lives of young children, families, and communities is rewarding and stimulating, and gives you the opportunity to work in diverse and multicultural environments.

NZTC graduates work in a range of early childhood related roles including:

- Early Childhood Teacher
- Nanny
- Kindergarten Teacher
- Social Worker
- Speech Language Therapist
- Lecturer
- Early Intervention Teacher
- Counsellor Centre Manager
- ECE Curriculum Advisor

Discover New Zealand

Famous for its abundant natural beauty and spectacular landscapes, New Zealand offers everything from sandy beaches and forests to volcanoes, ski fields and glaciers.

There is lots to see and do in New Zealand with popular pursuits including outdoor adventures ranging from skiing in Queenstown, to hiking and camping in our beautiful national and regional parks.

For those who prefer the indoors, major cities offer a variety of cafes, restaurants and shops.

Our Kiwi culture

New Zealand is home to people from all around the world, resulting in a diverse multicultural population of 5 million. Kiwi culture has been largely influenced by both European (Pākehā) principles and indigenous Māori culture.

Today, the rich Māori culture and language are an integral part of New Zealand life.

Student Profile

Christine Joy Remedio

Christine and her family moved to Aotearoa where Christine found herself in a new situation, becoming the main breadwinner for her family. She found a position in an ECE centre where she embraced a varied role doing everything from admin tasks to being an ECE reliever, and assisting in the kitchen.

This new career path ended up being more rewarding and fulfilling than any previous career aspiration she'd had. This realization solidified her commitment to ECE, and she enrolled in the **Graduate Diploma in Teaching (ECE)**.

Now a graduate and fully committed to her new career, Christine is passionate about nurturing young minds and guiding them toward becoming compassionate, responsible tamariki.



“Teaching is not just a job, but a journey of continuous discovery and impact. My goal is to continue growing professionally and personally, enriching my skills and knowledge to make lasting impacts on the lives of children and others.”

Christine Joy Remedio

Student support

Our students are at the heart of everything we do. We pride ourselves on our range of support services available to help you succeed in your studies.

A quality learning environment

You will feel at home studying with NZTC. We have great resources available online and passionate teaching staff to ensure you get the most from your study.

Our people

Over 100 staff deliver our high quality early childhood education qualifications, bringing strong experience in the early childhood sector as well as across adult education, administration, research, leadership, management, and information technology sectors.

Library

NZTC's online library is filled with valuable resources to support your learning, including eBooks, peer-reviewed e-journals and research databases.

The most up-to-date research can be found in our comprehensive academic databases and an extensive range of eBooks are available in our expanding eBook collection. Our friendly library support staff are on hand to help you get the most out of the library and its resources.

Māori and Pasifika support

To ensure we are hearing the voices and meeting the needs of our Māori and Pasifika students, a Māori and Pasifika Student Liaison is available alongside specific support tutorials.

Student support

Our Student Support Team is here to help you deal with any personal issues that may affect your performance as a student. Student Support regularly supports students through health and family issues, and can direct you to external support agencies should you require them.

IT Help

For any IT related challenges, help is at hand. Our team offer extended hours to resolve any technical issues you may have, giving clear guidance without the 'techy talk'.

Helping you settle in

If you are not from New Zealand, we appreciate that there will be things you want and need to know.

We have a wealth of information available for international students on our website, covering key areas such as accommodation, medical and travel insurance and eligibility for health services.

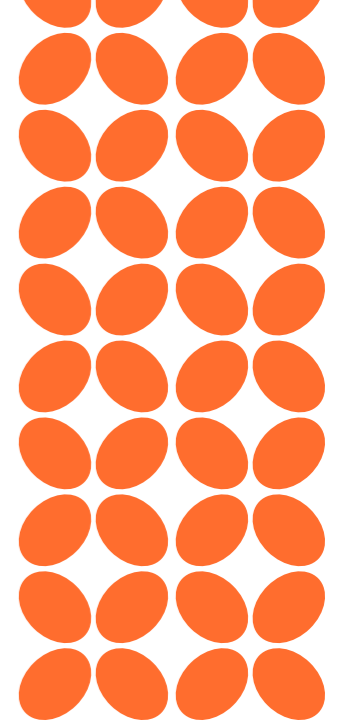
To find out more visit www.nztertiarycollege.ac.nz

We also have a dedicated International Team who are more than happy to assist you with any queries. They can be contacted on **+64 9 520 4000** or by emailing international@nztertiarycollege.ac.nz

International orientation

To help our international students familiarise themselves with the college and the New Zealand way of life, we offer a comprehensive orientation.

Students are given information about emergency services, safety advice, job opportunities, immigration issues and the early childhood sector in New Zealand, as well as online learning and the academic requirements of our qualifications.



Flexible study to suit you

NZTC offers a choice of study options designed to suit different learning styles and lifestyles, ensuring you receive a quality and enjoyable educational experience.

Whichever mode of learning you choose, you will need to:

- Have daily access to a computer or mobile learning device with broadband internet access
- Complete courses and programs within specified time frames and undertake self-directed study

Centre-based learning

Applicable to all study programs operating under the requirements of The Teaching Council, this mode blends the flexibility of online learning with workplace learning and practical experience in an ECE centre or school.

All students access the learning management system (NZTC Online) for course materials, research and support materials, and assessment submission and return, while learning in their workplace.

Online

Online is a flexible mode of learning without face-to-face attendance requirements. All study is conducted through our learning management system - NZTC Online. Courses are completed and assessed online, and you are part of an online learning community where you can interact with other students and lecturers through online discussion forums to assist your learning.



Undergraduate options tailored to your career path

New Zealand Tertiary College's diploma qualifications are offered to students both with and without practical requirements, depending on whether New Zealand teacher registration is sought.

New Zealand Diploma in Early Childhood Education and Care (Level 5)

New Zealand Diploma in Early Childhood Education and Care (Level 6)

The diploma options above, allow students to pursue a qualification that suits their lifestyle and learning needs. Students can select from two modes of learning – Centre-based Learning and Online.

Field Practice courses can be selected within the Level 5 and Level 6 qualifications. These practical components enable students to begin fulfilling the initial New Zealand teacher registration eligibility requirements to pursue a career as a practising early childhood teacher in New Zealand.

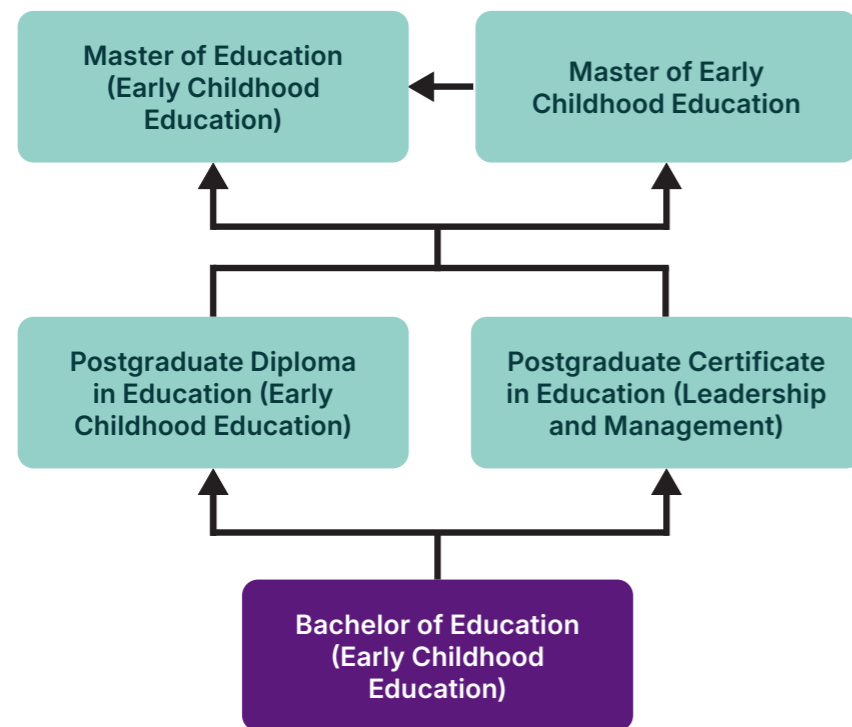
The online mode of learning has no practical requirements and is suited to those who wish to pursue a career in early childhood education without a teaching focus, or to those who wish to complete practical study at a later date.

Students can pathway into a Bachelor of Education (ECE) or a Bachelor of Teaching (ECE) after completing the Level 5 or Level 6 New Zealand Diploma in Early Childhood Education and Care. Graduates of the Bachelor of Teaching (ECE) are eligible to apply for New Zealand teacher registration.



Help shape the early childhood education landscape

The qualifications below are ideal for students who seek a career in early childhood education (researchers, scholars, lecturers or academics) without a teaching focus.



These qualifications are an ideal choice for students who need substantial flexibility whilst studying as there are no practical teaching requirements and all coursework is completed online, anywhere, anytime.

Our postgraduate qualifications (highlighted in teal) are designed to pathway into one another beginning with the six month Postgraduate Certificate in Education (Leadership and Management).

However, a student can apply to gain entry directly into any one of our postgraduate qualifications subject to entry criteria.

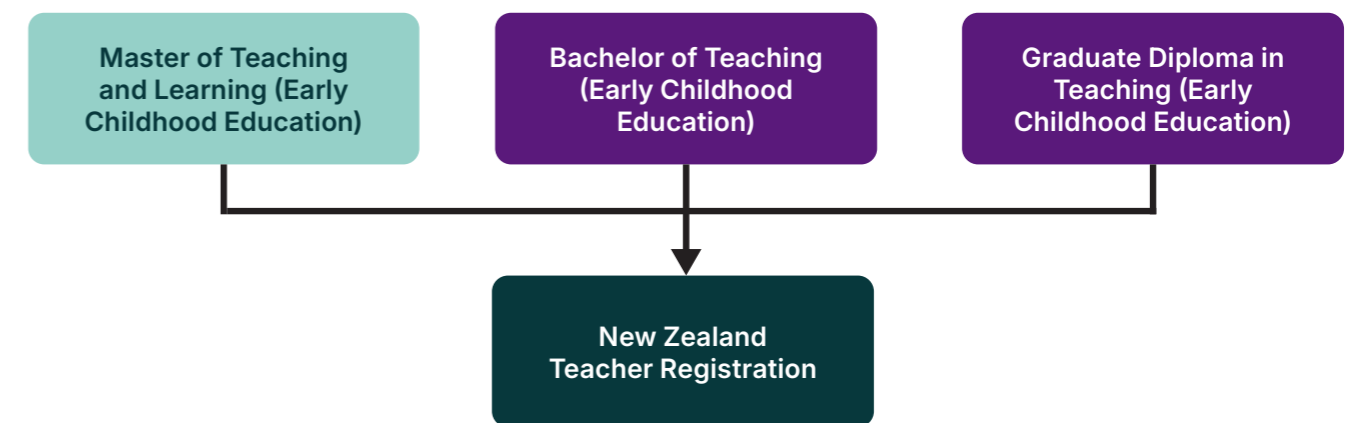


A career in early childhood teaching

If your goal is to become a qualified early childhood teacher in New Zealand, you will need to complete a teaching qualification.

Requirements for teaching qualifications are set by the Teaching Council of Aotearoa New Zealand (Teaching Council) - the New Zealand teacher licensing body. Teaching qualifications require you to complete Field Practice as well as theoretical learning throughout your stages of study.

Our teaching qualifications feature a strong practical component so you can put your new knowledge and learning into practice, giving you valuable hands-on experience in a range of early childhood settings.



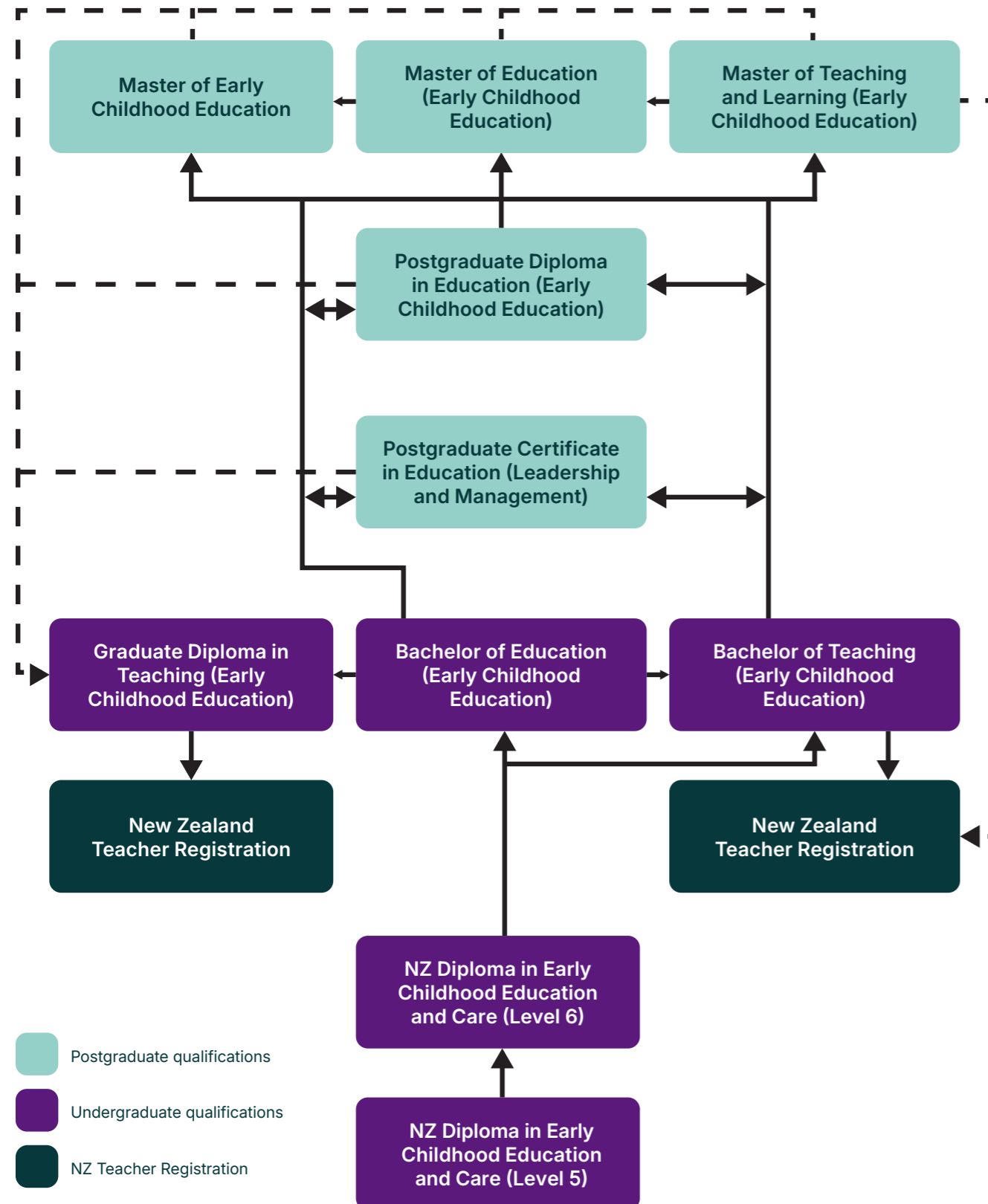
Students can directly enter the Bachelor of Teaching (ECE) or they can pathway into it after completing our Level 5 or Level 6 New Zealand Diploma in Early Childhood Education and Care.

The Graduate Diploma in Teaching (ECE) is for students who have completed a degree in any field and would like to move into the early childhood education sector and become a registered teacher.



Qualification study pathways

Use the diagram below to select the qualification that is right for you. Graduates of the Bachelor of Teaching (ECE), Graduate Diploma in Teaching (ECE), and the Master of Teaching and Learning (ECE) are eligible to apply for New Zealand teacher registration.



Frequently asked questions

I would like to complete the Bachelor of Teaching (ECE), but I don't have University Entrance and I'm not yet 20 years old. What are my options?

You can apply to study the one year New Zealand Diploma in Early Childhood Education and Care (Level 5). This qualification pathways into the Level 6 Diploma or the Bachelor of Teaching (ECE). Upon completion of the Level 5 and/or Level 6 qualification you can apply to have your credits recognised and transferred to the Bachelor of Teaching (ECE).

What is the difference between the Bachelor of Education (ECE) and the Bachelor of Teaching (ECE)?

The Bachelor of Teaching (ECE) has practical components and upon completion graduates are eligible to apply for New Zealand teacher registration.

The Bachelor of Education (ECE) does not have any practical requirements and does not lead to New Zealand teacher registration.

I want to become a registered ECE teacher but I'm not able to do the practical components at the moment. What are my study options?

All of our undergraduate qualifications apart from the Bachelor of Teaching (ECE) and Graduate Diploma in Teaching (ECE) can be studied without practical teaching requirements. Students have the opportunity to complete Field Practice components at a later date if they wish to pursue New Zealand teacher registration.

What is the difference between the Master of Education (ECE) and the Master of Early Childhood Education?

The Master of Education (ECE) is a two year research-based Master's whereas the Master of Early Childhood Education is an 18 month qualification completed through coursework.

I already have a Bachelor's degree but I want to become a registered ECE teacher. Should I choose the Graduate Diploma in Teaching (ECE) or the Postgraduate Diploma in Education (ECE)?

If you hold a Level 7 Bachelor's degree and want to become a registered teacher, you must complete the Graduate Diploma in Teaching (ECE) as graduates are eligible to apply for New Zealand teacher registration upon completion. The Postgraduate Diploma in Education (ECE) has no practical teaching requirements and therefore doesn't result in eligibility to become a registered ECE teacher.





Postgraduate Qualifications

Master of Teaching and Learning
(Early Childhood Education)

Master of Education
(Early Childhood Education)

Master of Early Childhood Education

Postgraduate Diploma in Education
(Early Childhood Education)

Postgraduate Certificate in Education
(Leadership and Management)

Master of Teaching and Learning (Early Childhood Education)

The Master of Teaching and Learning (ECE) combines advanced early childhood education research and pedagogical expertise with practical, hands-on experience. Blending academic excellence with real-world application, this program prepares graduates to excel as leaders in their field.

Upon completion, graduates are eligible to apply for New Zealand teacher registration.



Method:
Full-time



Mode:
Centre-based



Level:
9



Duration:
1.5 years (full-time)



Credits:
180

Program overview

- Cultivate meaningful play experiences that holistically nurture children's learning and development through engagement with *Te Whāriki*.
- Explore a range of pertinent leadership theories and styles tailored to early childhood settings.
- Develop essential knowledge and theories on child development through exploration of theoretical perspectives that shape ECE in NZ.

Entry requirements

All applicants must:

- Hold a Level 7 degree with a B+ average (75%) or higher.*
- Are subject to satisfactory police checks, professional referee reports and a visual interview. The required documents are listed on the conditional offer letter issued by the admissions team.

Note:

Special consideration is given to applicants with strong academic performance and relevant work experience.

Applicants with English as an additional language are required to provide proof of their English language competency.

*Applicants who have gained their qualification outside of New Zealand will have their qualification assessed by NZTC but may need to provide an NZQA International Qualifications Assessment confirming the level and credit value of the bachelor's degree.

Highlights / Opportunities

- Develop a strong foundation in research and pedagogy.
- Graduates well-prepared to take on industry leadership roles.
- Opportunities for employment alongside study commitments.



Postgraduate study that leads to New Zealand Teacher Registration

“I would recommend the Master of Teaching and Learning (Early Childhood Education) to teachers. It supports teachers to build and extend their current knowledge and refine practice. Course content encourages a reflective and improvement focused culture, a place they can unpack and critically analyse theory and research.”

Jane Burke | Regional Professional Practice Leader

“The NZTC Master of Teaching and Learning is an aspirational pathway degree for high performing and aspiring Curriculum Leaders and Head Teachers as part of Centre Management with a learning leadership focus.”

Fitu Ah-Young | Owner of Pasifika ECE Centres

Visit www.nztertiarycollege.ac.nz for more information about this program including the courses you will be studying and how to apply.

Master of Education (Early Childhood Education)

Designed to advance quality teaching, learning, research and scholarship skills in the early childhood sector, this research-based Master's is ideal for graduates who have a degree and want to take their educational and professional skills to a higher level.



Method:
Full-time/Part-time



Mode:
Online



Level:
9



Duration:
2 years (full-time)



Credits:
240

Program overview

- Authentic leadership in early childhood education.
- Communities of learning and engagement.
- Children and families in early childhood education.
- Infants', toddlers' and young children's learning through the arts in a multicultural society.

Highlights / Opportunities

- Equips you with higher level research, curriculum and leadership skills.
- If you are a manager or senior level staff, you can enhance your leadership and mentoring of the teachers in your preschool.
- Beneficial if you are seeking a career as a researcher, scholar, lecturer or academic in the early childhood field.

Entry requirements

All applicants must:

- Hold a Level 7 Bachelor's degree (360 credits), or higher qualification with an average grade deemed acceptable to the Academic Board* or Completed the requirements of the Postgraduate Diploma in Education from NZTC with a grade point average of merit or higher.
- Declare any physical or learning disabilities, or diverse needs that may impact on their performance as a student.
- Succeed in a personal interview.
- Domestic students with English as an additional language are required to provide proof of their English language competency.

Note:

Credit for prior formal learning may be awarded towards this qualification at the discretion of the College.

*Applicants who have gained their qualification outside of New Zealand will have their qualification assessed by NZTC but may need to provide an NZQA International Qualifications Assessment confirming the level and credit value of the bachelor's degree.



Student Profile Amrita Kaur

I wanted to enhance my pedagogical and theoretical knowledge, and postgraduate study through NZTC allowed me to grow in my career and live my dream as a researcher, contributing to children's learning in a more effective and meaningful way.

NZTC Online is flexible, interactive and dynamic, and allowed me to manage the different roles I play in both my professional and personal life, while having the pleasure of being a student at the same time.

Discussion Forums connected me with other learners, and enriched my knowledge, allowing me to hear other people's experiences and share my own.

Growing myself as an active researcher, I would like to support ECE facilitators in achieving the best outcomes for young children.

“...NZTC allowed me to grow in my career and live my dream as a researcher, contributing to children's learning in a more effective and meaningful way.”

Amrita Kaur

Master of Early Childhood Education

This Master's degree aims to advance scholarship in curriculum, leadership, advocacy and ethics at a postgraduate level through coursework. This Master's is advantageous for those who wish to develop expertise in a specific area of educational practice.



Method:
Full-time/Part-time



Mode:
Online



Level:
9



Duration:
1.5 years (full-time)



Credits:
180

Program overview

- Leadership and management in early childhood education.
- Adult teaching philosophies and techniques.
- Children and families in early childhood education.
- Infants', toddlers' and young children's learning through the arts in a multicultural society.

Entry requirements

All applicants must:

- Hold a Level 7 Bachelor's degree (360 credits), or higher qualification with an average grade deemed acceptable to the Academic Board' or Completed the requirements of the Postgraduate Diploma in Education from NZTC with a grade point average of merit or higher.
- Declare any physical or learning disabilities, or diverse needs that may impact on their performance as a student.
- Domestic students with English as an additional language are required to provide proof of their English language competency.

Note:

Credit for prior formal learning may be awarded towards this qualification at the discretion of the College.

Highlights / Opportunities

- Encourages critical reflection on practice as it relates to early childhood education.
- Develops your knowledge and skills through advanced level coursework.
- Beneficial if you are looking to advance your career as an early childhood professional.

**Applicants who have gained their qualification outside of New Zealand will have their qualification assessed by NZTC but may need to provide an NZQA International Qualifications Assessment confirming the level and credit value of the bachelor's degree.*



Student Profile Shuchita Jain

My educational journey with NZTC has been extremely beneficial in supporting my career as a teacher, and further, as a teacher-leader.

I was so pleased to find that both my Graduate Diploma in Teaching (ECE) and my Master of Early Childhood Education had a leadership component. These programs, and the lecturers, absolutely helped me to understand what exactly leadership looks like in the early childhood sector.

I firmly believe that if anyone wishes to pursue a career in ECE, NZTC is the obvious choice. The supportive faculty, coupled with relevant content that enriches learning, made me feel consistently supported and guided.

If you are aiming to become a Head Teacher, focus is the key to keep you alert and far-sighted. There will be ups and downs in your journey, but if you are determined and focused then you can be the light for your team, tamariki and whānau.

“I firmly believe that if anyone wishes to pursue a career in ECE, NZTC is the obvious choice. The supportive faculty, coupled with relevant content that enriches learning, made me feel consistently supported and guided.”

Shuchita Jain

Postgraduate Diploma in Education (Early Childhood Education)

Degree graduates with an interest in the early childhood sector have an opportunity to enhance their knowledge in research and leadership with this postgraduate diploma that also serves as a pathway to our Masters' qualifications.



Method:
Full-time/Part-time



Mode:
Online & Blended Learning



Level:
8



Duration:
1 years (full-time)



Credits:
120

Program overview

- Authentic leadership and approaches to leadership.
- Research methods in early childhood education.
- Communities of learning and engagement.
- Diverse perspectives on arts in early childhood education.

Highlights / Opportunities

- Builds on your undergraduate degree to expand your knowledge in early childhood education.
- Beneficial if you are seeking a career as a scholar, lecturer or academic in the early childhood field.
- Pathway to our Master's qualifications.

Entry requirements

All applicants must:

- Hold a Level 7 Bachelor's degree (360 credits), or higher qualification.*
- Declare any physical or learning disabilities, or diverse needs that may impact on their performance as a student.
- Domestic students with English as an additional language are required to provide proof of their English language competency.

Note:

Credit for prior formal learning may be awarded towards this qualification at the discretion of the College.

*Applicants who have gained their qualification outside of New Zealand will have their qualification assessed by NZTC but may need to provide an NZQA International Qualifications Assessment confirming the level and credit value of the bachelor's degree.



Student Profile

Sarah McKenzie

The postgraduate program has allowed me to consider the way I teach and lead through a lens that I had not looked through before. I've had the opportunity to unpack the concept of education and how goals and philosophies can influence the way that a student learns. This has been especially valuable for my role as a leader.

I'm now able to look at the big picture of education and how long term visions and goals can influence individual children and the way they learn as much as it influences the teachers and how they practice. The Postgraduate Diploma has given me the tools that I need to further my knowledge and qualifications in ECE in the future.

NZTC has great lecturers that are willing to support their students with their goals. The flexibility of online learning allowed me to work full time as well as study which is something that I would not have been able to do at all tertiary institutes.

"I'm now able to look at the big picture of education and how long term visions and goals can influence individual children and the way they learn as much as it influences the teachers and how they practice."

Sarah McKenzie

Postgraduate Certificate in Education (Leadership and Management)

Early childhood professionals' scholarship in the areas of leadership and management are enhanced through the study of this postgraduate certificate which focuses on expert knowledge through in-depth exploration of associated issues and trends.



Method:
Full-time/Part-time



Mode:
Online & Blended Learning



Level:
8



Duration:
0.5 year (full-time)



Credits:
80

Program overview

- Authentic leadership and approaches to leadership.
- The ethical basis of leadership.
- Managing early childhood settings.
- The teacher leader and manager in early childhood education.

Entry requirements

All applicants must:

- Hold a Level 7 Bachelor's degree (360 credits), or higher qualification.*
- Declare any physical or learning disabilities, or diverse needs that may impact on their performance as a student.
- Domestic students with English as an additional language are required to provide proof of their English language competency.

Note:

Credit for prior formal learning may be awarded towards this qualification at the discretion of the College.

Highlights / Opportunities

- You will gain higher level specific skills in leadership, management and mentoring.
- Encourages you to critically reflect on leadership and management as they relate to early childhood education.
- Complete an NZQA approved postgraduate qualification in just six months.

*Applicants who have gained their qualification outside of New Zealand will have their qualification assessed by NZTC but may need to provide an NZQA International Qualifications Assessment confirming the level and credit value of the bachelor's degree.



Student Profile Pip Deazley

After 'falling in love with learning' during her Bachelor of Teaching (ECE) and then being promoted to a centre leader, Pip decided to enrol in the Postgraduate Certificate in Education (Leadership and Management).

As I climbed in responsibility I wanted a good grounding of theory to build my leadership capacity. My postgraduate study has supported me by building my confidence in my ability to lead.

This qualification opened my eyes to different leadership styles so I am better able to recognise how different teachers work and think, and how I can support them. Their success leads to the success of the children."

Pip now utilises her new skills and knowledge every day, whether she's working on the floor alongside other teachers or in the wider management of the centre.

"As I climbed in responsibility I wanted a good grounding of theory to build my leadership capacity. My postgraduate study has supported me by building my confidence in my ability to lead."

Pip Deazley



Undergraduate Qualifications

Graduate Diploma in Teaching
(Early Childhood Education)

Bachelor of Teaching
(Early Childhood Education)

Bachelor of Education
(Early Childhood Education)

New Zealand Diploma in Early Childhood
Education and Care (Level 6)

New Zealand Diploma in Early Childhood
Education and Care (Level 5)

Graduate Diploma in Teaching (Early Childhood Education)

Degree graduates from any discipline are enabled to gain specialist knowledge in the area of early childhood education with this qualification. Featuring a strong practical component, students benefit from hands-on learning and working alongside study commitments.



Method:
Full-time



Mode:
Centre-based



Level:
7



Duration:
1.33 years (Full-time)



Credits:
160

Program overview

- Early childhood teachers as leaders influencing quality curriculum.
- Supporting children with diverse needs.
- Supporting cultural diversity through inclusive pedagogy.
- Modern approaches to child development.

Entry requirements

All applicants must:

- Hold a Level 7 Bachelor's degree (360 credits),* a Level 8 Bachelor's degree with Honours (480 credits),* a Level 9 Master's degree (240),* or a Level 7 New Zealand Diploma of Teaching (Primary).
- Demonstrate their ability to meet the Teaching Council of Aotearoa New Zealand's Good Character and Fit to be Teacher Policy (2007) criteria.
- Provide written referee report(s).
- Satisfy New Zealand Police clearance conditions.
- Declare any physical or learning disabilities, or diverse needs that may impact on their performance as a student.
- Provide evidence of their English language competency as required by the Teaching Council of Aotearoa New Zealand.

Note:

There is no special admission provision for this qualification. Credits for prior formal learning are not awarded towards this qualification.

*Applicants who have gained their qualification outside of New Zealand will have their qualification assessed by NZTC but may need to provide an NZQA International Qualifications Assessment confirming the level and credit value of the bachelor's degree.

Highlights / Opportunities

- Use your degree to fast-track eligibility for New Zealand teacher registration upon completion of this program.
- Benefit from hands-on learning with practical experience in early childhood settings.
- Enjoy the flexibility of learning while you work.



Student Profile

Karunya Ravikumar

Born to a teacher, my mother is my inspiration. It is through her, I realised that teaching is not just a career but a calling. It is a rewarding career, where I can make a difference in the lives of others and mine by constantly learning and teaching.

I chose NZTC because it's an NZQA Category 1 tertiary education provider with a reputation for providing high-quality early childhood education programs.

Also, working full-time in an early childcare centre in Wellington and with family commitments, I wanted a study program that was flexible and affordable.

My studies with NZTC are equipping me with the skills and knowledge necessary for working with young children. The courses cover all aspects of child development, helping me to understand how a child grows and the strategies to support the different needs of a child.



"I chose NZTC because it's an NZQA Category 1 tertiary education provider with a reputation for providing high-quality early childhood education programs."

Karunya Ravikumar

Bachelor of Teaching (Early Childhood Education)

This qualification prepares students for a rewarding career in early childhood teaching. NZTC students gain the skills and knowledge needed to practice with confidence in a diverse socio-cultural context, and upon completion, are eligible to apply for New Zealand teacher registration with the Teaching Council of Aotearoa New Zealand.



Method:
Full-time



Mode:
Centre-based



Level:
7



Duration:
3 years (Full-time)



Credits:
360

Program overview

- Modern approaches to child development.
- Early childhood assessment, planning and teaching grounded in play-based curriculum.
- Research, professional practice and leadership.
- Teaching in culturally diverse contexts.

Entry requirements

All applicants must:

- Have obtained a University Entrance (UE) via either NCEA or CIE, or achieved an equivalent overseas high school diploma.
- Demonstrate an ability to meet the expectations of the Teaching Council of Aotearoa New Zealand, based on the Code of Professional Responsibility and Standards for the Teaching Profession (2017), through an interview.
- Meet the literacy and numeracy requirement.
- Provide written referee reports.
- Satisfy New Zealand Police clearance conditions.
- Declare any physical or learning disabilities, or diverse needs that may impact on their performance as a student.
- Provide evidence of their English language competency as required by the Teaching Council of Aotearoa New Zealand.

Note: Any student who is 20 or older by the commencement of the program and who does not meet the requirement for admission to the program may be granted special admission. Applicants may need to demonstrate academic ability to study at the level required to complete the program successfully. Applicants not able to provide evidence of their English language competency may request an exemption from the Teaching Council. Please contact us for further information. Credit for prior formal learning may be awarded towards this qualification at the discretion of the College.

Highlights / Opportunities

- This program is developed specifically to meet the demands of the early childhood sector.
- You will be equipped with all the tools needed to become an effective early childhood teacher.
- You will become a confident and resourceful practitioner able to work in a diverse range of early childhood contexts.



Student Profile

Chloe Burgess

NZTC has been the perfect fit for studying around work hours and family commitments.

Being able to spend a large amount of time with the children at my centre has definitely assisted with applying my knowledge to practical situations, and learning in my own time has been great because I like to work at my own pace.

I understand better the way children behave and why we need to be more patient and understanding of their needs. As ECE teachers we are not babysitters, we are there to enhance their learning and help them to understand the world around them, building the foundations for skills they will need throughout their lives. I like to think we provide the best environment away from home for them to thrive in!



“As ECE teachers we are not babysitters, we are there to enhance their learning and help them to understand the world around them, building the foundations for skills they will need throughout their lives.”

Chloe Burgess

Bachelor of Education (Early Childhood Education)

The Bachelor of Education (ECE) focuses on the major aspects of early childhood education and explores current issues and trends without the requirement of practice. Students will gain essential expertise and skills for a successful career in early childhood education.



Method:
Full-time



Mode:
Online



Level:
7



Duration:
3 years (Full-time)



Credits:
360

Program overview

- Play as a framework for learning.
- Professional practice and leadership.
- Academic writing and research in early childhood education.
- Culturally diverse early childhood education.

Highlights / Opportunities

- Provides comprehensive, theoretical knowledge of early childhood education.
- Gives you a qualification relevant to work in areas such as education, teaching, research, health, policy, management, leadership, social work and curriculum development.

Entry requirements

All applicants must:

- Have obtained a University Entrance (UE) via either NCEA or CIE, or Achieved an equivalent overseas high school diploma, or Completed a recognised qualification of at least 120 credits at level 3 or above.
- Declare any physical or learning disabilities, or diverse needs that may impact on their performance as a student.
- Provide evidence of their English language competency as required by the Teaching Council of Aotearoa New Zealand.

Note: Any student who is 20 or older by the commencement of the program and who does not meet the requirement for admission to the program may be granted special admission. Applicants may need to demonstrate academic ability to study at the level required to complete the program successfully. Applicants not able to provide evidence of their English language competency may request an exemption from the Teaching Council. Please contact us for further information. Credit for prior formal learning may be awarded towards this qualification at the discretion of the College.



Student Profile

Kishanthi Pushparaja

I always knew I wanted to pursue my education, but it was never possible for me back in Sri Lanka because of family responsibilities. For years I pushed all my dreams aside, moving to Dubai with my husband and working in administration roles to support my family. But somehow my passion for education always stuck with me.

I have already learnt so much studying with NZTC.

New Zealand's curriculum supports children to see what they're capable of, to learn life lessons rather than just sitting in a classroom doing bookwork.

The support I have received from NZTC has been a huge source of motivation throughout my study. From day one we were given all the tools and materials we needed, and the online support is great.



“The support I have received from NZTC has been a huge source of motivation throughout my study. From day one we were given all the tools and materials we needed, and the online support is great.”

Kishanthi Pushparaja

New Zealand Diploma in Early Childhood Education and Care (Level 6)

This program equips students with an in-depth pedagogical knowledge of the major early childhood curriculum areas: language, literacy, the creative arts, mathematics, science and technology; family and community; and foundations for leadership in an early childhood context.



Method:
Full-time



Mode:
Centre-based/Online



Level:
6



Duration:
1 year (Full-time)



Credits:
120

Program overview

- Supporting curriculum areas in early childhood education.
- Working with infants and toddlers.
- Culturally diverse early childhood education.
- Leadership in early childhood context.

Highlights / Opportunities

- Develops an in-depth theoretical and subject-related knowledge in early childhood education.
- Enhances your leadership capabilities.
- Provides pathway options for further education and teaching qualifications.

Entry requirements

All applicants must:

- Have completed the New Zealand Diploma in Early Childhood Education and Care (Level 5) or equivalent.
- Demonstrate their ability to meet the Teaching Council of Aotearoa New Zealand's Good Character and Fit to be Teacher Policy (2007) criteria.
- Provide written referee report(s).
- Satisfy New Zealand Police Clearance conditions.
- Declare any physical or learning disabilities, or diverse needs that may impact on their performance as a student.
- Provide evidence of their English language competency as required by the Teaching Council of Aotearoa New Zealand.

Note:

Other special admission categories may be applied for and granted at the discretion of the College.

Credit for prior formal learning may be awarded towards this qualification at the discretion of the College.



Student Profile

Ashley Bong Jing Wen

I couldn't wait to finish high school and start planning my journey towards becoming a qualified teacher. A few years ago, one of my agents told me about her experience of studying in New Zealand and this really inspired me.

I ended up enrolling in the New Zealand Diploma in Early Childhood Education and Care (Level 6) with New Zealand Tertiary College (NZTC) so I could gain a solid introduction into the world of ECE.

I love the Field Practice component of my courses. It's a chance for me to put my learning into practice and receive feedback so I can keep improving my teaching abilities.

New Zealand's ECE curriculum also helps me a lot. If I am unsure about a concept I refer to Te Whāriki to help guide me in my responsibilities as an educator.



"I love the Field Practice component of my courses. It's a chance for me to put my learning into practice and receive feedback so I can keep improving my teaching abilities."

Ashley Bong Jing Wen

New Zealand Diploma in Early Childhood Education and Care (Level 5)

Laying a strong foundation of theoretical and practical knowledge in the field of early childhood education, this program equips students to become resourceful and reflective professionals, competent in the key areas of learning. These include professional studies, development and learning, and early years' pedagogy.



Method:
Full-time



Mode:
Centre-based/Online



Level:
5



Duration:
1 year (Full-time)



Credits:
120

Program overview

- Supporting curriculum areas in early childhood education.
- Working with infants and toddlers.
- Culturally diverse early childhood education.
- Leadership in early childhood context.

Highlights / Opportunities

- Develops an in-depth theoretical and subject-related knowledge in early childhood education.
- Enhances your leadership capabilities.
- Provides pathway options for further education and teaching qualifications.

Entry requirements

All applicants must:

- Have achieved a minimum of 48 NCEA credits at level 2 or higher, with the literacy credits required for University Entrance; or hold a recognised qualification of at least 120 credits at level 3 or above.
- Demonstrate their ability to meet the Teaching Council of Aotearoa New Zealand's Good Character and Fit to be Teacher Policy (2007) criteria.
- Provide written referee report(s).
- Satisfy New Zealand Police Clearance conditions.
- Declare any physical or learning disabilities, or diverse needs that may impact on their performance as a student.
- Succeed in a personal interview.
- Provide evidence of their English language competency as required by the Teaching Council of Aotearoa New Zealand.

Note: Any student who is 20 or older by the commencement of the program and who does not meet the requirement for admission to the program may be granted special admission. Applicants may need to demonstrate academic ability to study at the level required to complete the program successfully. Applicants not able to provide evidence of their English language competency may request an exemption from the Teaching Council. Please contact us for further information. Credit for prior formal learning may be awarded towards this qualification at the discretion of the College.



Student Profile Julie Mairs

I want to be that positive person in a child's life, doing my utmost to provide them with the best education and care possible.

It is amazing getting to see children develop important life skills they did not have before, knowing that I am a significant part of this. It could be something like watching them engage with one another and make new friends, express their feelings, or even just put their own shoes and jackets on themselves.

I chose NZTC because I wanted the freedom to work and study at the same time. The college is very flexible for those already in the work force or who have other commitments, as you can study online at any time of the day or night.

NZTC is also diligent in ensuring I am out in the field on a regular basis. This real-life experience in an early childhood centre is so crucial as you learn first-hand what the profession is really like and what is required of you.

"I chose NZTC because I wanted the freedom to work and study at the same time. The college is very flexible for those already in the work force or who have other commitments..."

Julie Mairs

Additional information

[Frequently asked questions](#)

[How to become an NZTC student](#)

[Find out more](#)

Frequently asked questions

Who studies at NZTC?

The majority of our students are New Zealanders; however, we welcome students from all around the world with various backgrounds and cultures. Some students begin their study with us straight out of school while others have previously worked in the early childhood sector or in a completely different industry. Whatever their background, our students are passionate about early childhood education and making a difference in the lives of families and young children.

I have studied previously. Is there a possibility of receiving credit towards a New Zealand Tertiary College program?

Yes. Credit towards your chosen program at NZTC for courses which you have already studied at other tertiary providers, is assessed by NZTC's Credit Recognition and Transfer (CRT) assessment.

Credit is assessed on a case-by-case basis. If you wish to apply for credit you will be required to pay a \$95.00 application fee. This fee covers the cost involved in the assessment process of CRT. Students will be required to pay the fee prior to their CRT assessment and interview with NZTC.

For New Zealand qualifications:

If you have a completed (or partially completed) qualification in early childhood education from a New Zealand education provider, you may be eligible to receive credit. CRT assessment is completed by our Curriculum Team. Whether you receive credit for your previously completed qualification depends on whether the learning outcomes of each course correspond with the learning outcomes in NZTC courses, and whether the level of your previous study equates to your intended NZTC program. To be assessed for credit, you must supply a verified copy of your transcripts and learning outcomes for each course or qualification (the education provider will be able to give these to you) you have completed.

For overseas qualifications:

You may be eligible for credit if you have completed an early childhood qualification at an overseas tertiary institution. Before NZTC begins the CRT process, you need to get your qualification assessed by NZQA. Please contact NZQA for more information about this process - www.nzqa.govt.nz

What is available in the way of financial support?

If you are a full-time New Zealand citizen or permanent resident studying in New Zealand, you may be eligible for a student loan or allowance through StudyLink to help with your compulsory fees, course related costs and living costs.

The student allowance is a weekly payment for full-time students to help with day-to-day living costs. For more information see the StudyLink website - www.studylink.govt.nz

Fees Free

If you are a New Zealand citizen or Permanent Resident and new to tertiary study then you might be eligible for Fees Free. To see if you are eligible, visit their website at - www.feesfree.govt.nz

How are the courses assessed?

All courses are internally assessed and include theory based assessments and practical components. There are no exams.

Are my tuition fees safe?

In the unlikely event that NZTC is unable to deliver the program you have enrolled in, NZTC has protected your fees with Public Trust. Fees deposited and protected by the Public Trust are held in the Common Fund which has an unsecured guarantee from the New Zealand Government. The student fee protection for NZTC is fully compliant with NZQA rules. Should access to your fees be necessary, you may contact Public Trust on **0800 494 733** or email feeprotect@publictrust.co.nz

This arrangement has been accepted by NZQA as meeting the requirements of the Education and Training Act 2020 and the Student Fee Protection Rules 2021.

Can I work overseas with my NZTC qualification?

Yes, NZTC's qualifications are internationally recognised and NZQA approved. They are also listed on the New Zealand Qualifications Framework, the definitive source for accurate and current information on quality assured qualifications in New Zealand.

Specific country recognitions include:

Australia

Our Bachelor of Teaching (Early Childhood Education) and Graduate Diploma in Teaching (Early Childhood Education) qualifications are approved by the Australian Children's Education and Care Quality Authority (ACECQA) – the body which oversees the national quality framework for the Australian early childhood sector. This means that NZTC graduates wishing to apply for Early Childhood Teacher (ECT) status in Australia can do so without having to apply for an assessment of their qualifications.

China

NZTC is recognised by the Chinese Ministry of Education as a trusted education provider and is listed on the Jiaoyu Shewai Jianguan Xinxiwang website for high quality education institutions outside China. Our qualifications are approved for Chinese students to attain public and private work in China by the Chinese Service Centre for Scholarly Exchange.

Sri Lanka

The University Grants Commission - Sri Lanka recognises New Zealand Tertiary College as an international higher educational institute of standing. The University Grants Commission – Sri Lanka is responsible for the quality of higher education in Sri Lanka.

Malaysia

The college's Bachelor of Education (Early Childhood Education) qualification is the first New Zealand degree to be accredited by the Malaysia Ministry of Education and the Malaysian Qualifications Agency – the entity responsible for quality assurance in higher education in Malaysia.

Do you offer reduced fees?

NZTC students may be eligible to apply for the following financial assistance:

Reduced Fees

We have a number of reduced-fee study programs available for domestic students. Please visit our website for current opportunities or contact our Admissions Team for further information.

Māori and Pasifika Scholarships

If you are of Māori or Pasifika descent you may be eligible for a scholarship that provides you with significant savings towards your study.

TeachNZ Teacher Recruitment Scholarships

TeachNZ Teacher Recruitment Scholarships (Early Childhood Education) have been introduced for qualifications leading to New Zealand teacher registration to increase the number of teachers in the early childhood sector. An early childhood education scholarship pays course fees and, for full-time students only, the scholarship pays an allowance of up to \$10,000 over the period of study. For more information see the TeachNZ website - www.teachnz.govt.nz

Ministry of Education:

ECE Service Teacher Education Grants (ECESTEG) are intended to support teacher-led services to assist staff members to gain their first Teaching Council of Aotearoa New Zealand (Teaching Council) approved early childhood teacher qualification that leads to teacher registration. Application forms are sent to all teacher-led services and will also be available on the Ministry of Education website - www.education.govt.nz

Should you have any questions not covered in this section, please email our Admissions Team or visit our website for more information.



How to become a NZTC student

By choosing to study with NZTC, you are choosing to begin or progress your career with a college who has been specialising in early childhood education for over 40 years.

Steps for domestic student enrolment:

1. Choose your program of study

New Zealand Tertiary College programs are delivered with various modes of learning. Please note that we have specific entry criteria for each program.

2. Apply

The fastest and most convenient way to apply to study with NZTC is by submitting your application online.

The application process varies depending on the mode of learning selected and your NZ Residency Status. Some programs have additional admission requirements, for example, you may need to complete additional forms, or be interviewed.

Students living in New Zealand are generally interviewed face-to-face. For applicants living overseas, your interview will be carried out via video conference.

3. Acceptance

If your application is successful you will receive an offer letter and invoice. This may be on the condition that you meet specific requirements.

To accept the offer of placement, you will need to return your signed offer letter to New Zealand Tertiary College and pay the tuition fees.

4. Enrolment

Once you have accepted your place and paid your fees, you will be issued with a Student Acknowledgement Form which you will have to sign and send back.

Once we receive your signed Student Acknowledgement Form, you will be enrolled as a current student and issued with your student details and course start date in order to begin your early childhood studies.

Steps for international student enrolment:

1. Choose your program of study

New Zealand Tertiary College programs are delivered with various modes of learning. Please note that we have specific entry criteria for each program.

2. Apply

The fastest and most convenient way to apply to study with NZTC is by submitting your application online.

The application process varies depending on the mode of learning selected and your NZ Residency Status. Some programs have additional admission requirements, for example, you may need to complete additional forms, or be interviewed.

Students living in New Zealand are generally interviewed face-to-face. For applicants living overseas, your interview will be carried out via video conference.

3. Offer of place and acceptance

If your application is successful you will receive an offer letter and invoice. This may be on the condition that you meet specific requirements. To accept the offer of place, you will need to return your signed offer letter to New Zealand Tertiary College.

4. Student visa and fee payment

When you have met the conditions stated in the offer letter, you may be eligible to apply for Approval in Principle from Immigration NZ for your visa. You can make fee payment once AIP has been approved. Upon payment of your full fees, receipt of fees is sent to you to enable you to get your student visa.

5. Obtain your visa

Once you have received your student visa and submitted a copy to New Zealand Tertiary College, you will be invited to attend an orientation program and issued with a Student Acknowledgement Form.

6. Enrolment

Once we receive your signed Student Acknowledgement Form, you will be enrolled as a current student to begin your early childhood studies.



Find out more

Visit our website

For the latest information on our programs and to keep up-to-date with what is happening at NZTC visit www.nztertiarycollege.ac.nz

Call or email us

If you would like to speak with our Admissions Team call **(09) 520 4000**

If you prefer to email our team:

Domestic students - admissions@nztertiarycollege.ac.nz

International students - international@nztertiarycollege.ac.nz

Note: Every effort has been made to ensure the accuracy of the information in this prospectus at the time of going to print. However, changes and developments are part of the life of the college and alterations may occur to programs, staff and services described in this prospectus.

Please refer to our website - www.nztertiarycollege.ac.nz for the most up-to-date information.

New Zealand Tertiary College reserve the right, without notice, to withdraw courses, amend fees, vary the content and delivery of programs etc. at any time before or after the applicant's admission. The college is responsible for all admissions decisions.

Connect with us on social media





**New Zealand
Tertiary College**

admissions@nztertiarycollege.ac.nz
www.nztertiarycollege.ac.nz