



# Investing in a world of good.





2022 impact report

## Our purpose

Launched with an initial \$100 million commitment, the TELUS Pollinator Fund for Good is one of the world's largest corporate social impact funds. We deliver on TELUS' commitment to social capitalism by investing in early stage, for-profit companies that have the potential to change the world for the better.

## Our investment approach

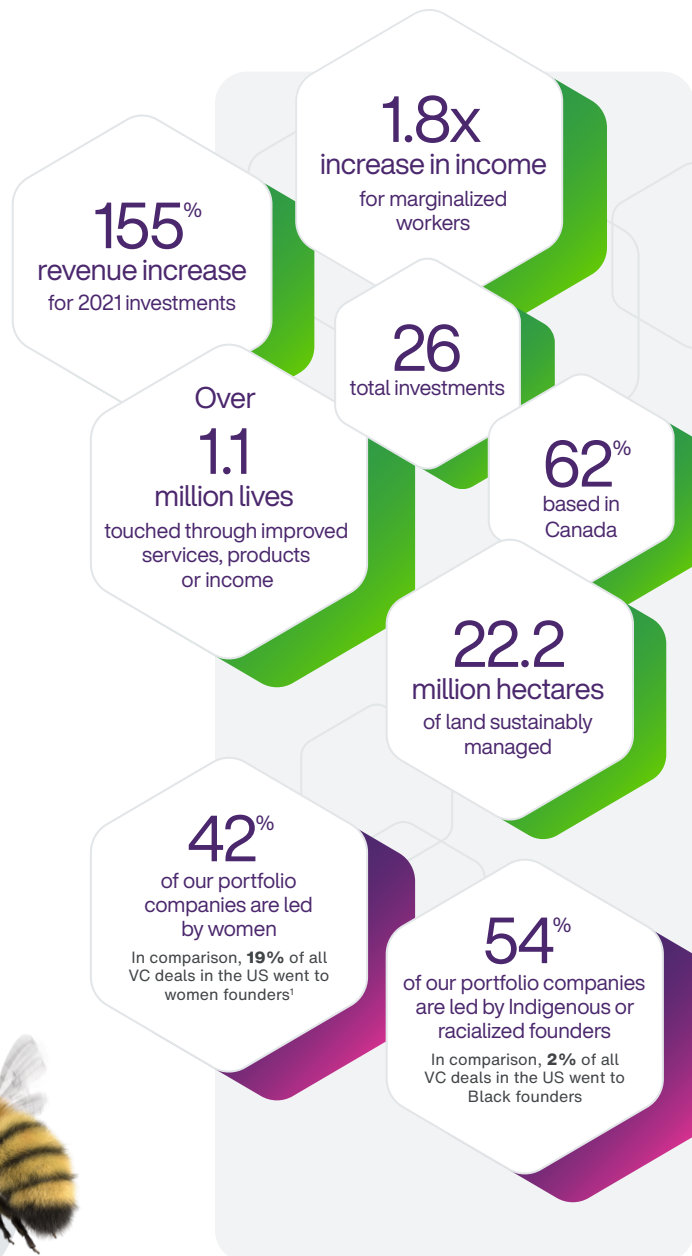
We provide early stage startups with the financing and expertise they need to grow and thrive. Leveraging TELUS' broad network, we make introductions, open doors, and guide our portfolio companies to maximize their impact in four key areas:

-  Supporting responsible agriculture
-  Transforming healthcare
-  Caring for our planet
-  Enabling inclusive communities

### LAUNCHING:

## Pollinator Impact Navigation Tool

We are excited to release the [Pollinator Impact Navigation Tool](#). Founders can use it to help adopt impact management practices, highlight impact as a unique differentiator in investor conversations, and ensure impact evolves as business scales.



To read our full report or to learn more about the TELUS Pollinator Fund, visit

[telus.com/pollinator](https://telus.com/pollinator)

1. PitchBook 'US VC female founders dashboard', May 2023.  
© 2023 TELUS. 22-2038.