



PRODUCT SPEC GUIDE

2023



The **New** Lightweight Champion!



Alcoa® Ultra ONE®
22.5" x 8.25" Wheel

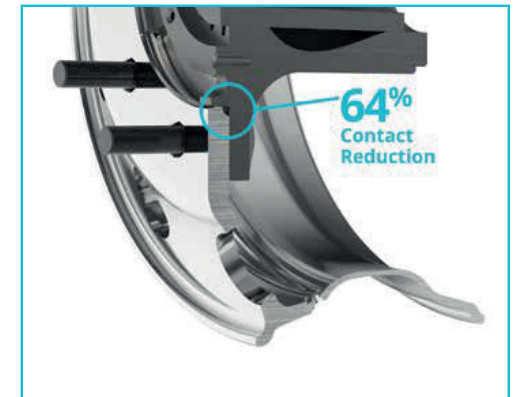
UNMATCHED STRENGTH
AT AN UNBEATABLE WEIGHT

THE LIGHTEST WHEEL IN THE MARKET
WITH THE LATEST INNOVATIVE TECHNOLOGIES

Hub Bore TECHNOLOGY

Our new Hub Bore Technology reduces the hub-to-wheel contact area by up to 64% versus other aluminium wheels on the market, leaving less surface area for corrosion to form.

Less corrosion means faster, easier and safer wheel maintenance that will keep your truck on the road.



Our Lightest Wheel In The Market

- Improved fuel efficiency
- Improved payload
- 10-285 standard fitment



Accessibility and Appearance

- Large hand holes offer easy access to the valve stem
- Classic style and look
- Superior wheel finishes: LVL ONE® and Mirror Polish

MAGNAFORCE®

Each Alcoa Ultra ONE® wheel is forged from our MagnaForce® alloy for a lighter wheel that's 17% stronger than the current industry standard 6061 alloy.

MagnaForce® is the first new alloy for forged aluminium wheels since 1968.

NO MORE POLISHING

Alcoa Dura-Bright® EVO Wheels

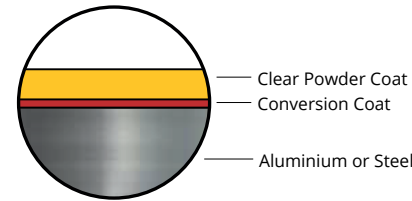


THE SURFACE TREATMENT YOU CAN COUNT ON TO KEEP YOUR WHEELS LOOKING GREAT FOR THE LONG RUN.

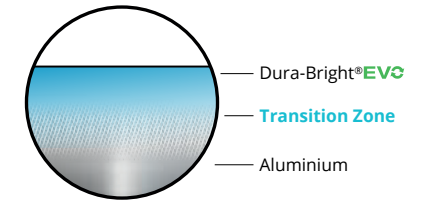
Dura-Bright® EVO Wheels feature a new and improved surface treatment that stands stronger against tough conditions – without the need to polish. And when it's time to clean, a simple soap and water wash gets you back on the road.

BREAKTHROUGH TECHNOLOGY

CONVENTIONAL COATING



DURA-BRIGHT® EVO



UNBEATABLE RESILIENCE

- 10x more resistant to corrosion caused by road salts and weather elements
- 3x more resistant to harsh chemicals

On ordinary wheels, a coating is typically applied as a layer that sits on top of the wheel surface. When scratched, water and salt can penetrate the coating, resulting in corrosion and further deterioration.

Patented Dura-Bright® EVO penetrates the aluminium, forming a molecular bond that becomes an integral part of the wheel. It prevents cracking, peeling and filiform corrosion often seen on coated wheels.

The benefits to you? Wheels that keep their shine and stay looking newer for longer, even after hundreds of washes* and thousands of miles.

ALL ALCOA ALUMINIUM WHEELS HAVE



Best-in-Class Warranty



Increase Payload. Improve Fuel Efficiency.



Easier, faster and safer maintenance.



Best-in-Class customer service and training



Lightest, Strongest and Largest Family of Aluminium Wheels



Stronger than Steel One-piece forged Aluminium



Increased Resale Value & 100% Recyclable

* Alcoa Dura-Bright® EVO Wheels should be cleaned in accordance with the Alcoa Dura-Bright® Cleaning Guide.

THE LIGHTEST 19.5"
TRAILER WHEEL IN THE
MARKET WITH THE LATEST
INNOVATIVE TECHNOLOGIES



19.5" x 7.5" Trailer Wheel

32mm bolt hole

UNMATCHED STRENGTH
AT AN UNBEATABLE WEIGHT

BRANCHES NZ-WIDE | 0508 677 704 | TWLNZ.CO.NZ

Proudly Playing a Part
in NZ Road Transport
since 1966



NO MORE POLISHING

Alcoa Dura-Bright® EVO Wheels



THE SURFACE TREATMENT YOU CAN COUNT ON TO KEEP YOUR WHEELS LOOKING GREAT FOR THE LONG RUN.

Dura-Bright® EVO Wheels feature a new and improved surface treatment that stands stronger against tough conditions – without the need to polish. And when it's time to clean, a simple soap and water wash gets you back on the road.

BRANCHES NZ-WIDE | 0508 677 704 | TWLNZ.CO.NZ

Proudly Playing a Part
in NZ Road Transport
since 1966



Alcoa® One-Piece Hub Cover System with Retention Nuts (for 10-Hole, 285.75mm, 22.5" and 24.5" Wheels)

New! Improved Retention. Fits More Applications.

This new one-piece design improves on our classic system to meet the needs of today's trucks. The improved retention nut system ensures proper fitment and the taller lug nut towers accommodate a wider variety of applications including wide base wheels, disc brakes, and other new truck trend variations. Offered in both front and rear applications, each system is designed to fit 10-hole hub piloted wheels (285.75mm, 22.5" and 24.5").



Part No.	Description	Wheel Type	Finish
088100S	Front Axle Kit includes: Two front covers, six retention nuts, and one removal tool. Use a short handle rubber mallet for installation. Requires a minimum of 3 threads per stud.	Hub Piloted	Chrome
089100S	Rear Axle Kit Includes: Two rear covers, six retention nuts, and one removal tool. Use a short handle rubber mallet for installation. Requires a minimum of 3 threads per stud.	Hub Piloted	Chrome
BALGRIP	Pliers for Stainless Steel Wheel Nut Covers		



Alcoa® Wheel Hub Cover Kit - suits Screw on Nut Cover

Part No.	Description	Wheel Type	Nut Cover
076185*	Hub Piloted Hub Covers - includes 1 Hub Cover, 10 Screw on Hug-A-Lugs, 1 Wrench Fitting: Cover is secured by screwing the 001851 directly onto stud threads.	Hub Piloted	33mm - 001851
077185*	Hub Piloted Hub Covers - includes 1 Hub Cover, 10 Screw on Hug-A-Lugs with Clamps, 1 Wrench Fitting: Cover is secured by screwing the 001881 onto the inner clamp. Inner clamp is placed on stud threads.	Hub Piloted	33mm - 001851

*Require a minimum of 4 threads per stud for fitting



Alcoa® Wheel Hub Cover Kit - suits Clamp type Cover

Part No.	Description	Wheel Type	Nut Cover
077188	Hub Piloted Hub Covers - includes 1 Hub Cover, 10 Screw on Hug-A-Lugs with Clamps, 1 Wrench Fitting: Cover is secured by screwing the 001881 onto the inner clamp. Inner clamp is placed on stud threads.	Hub Piloted	33mm - 001881
076188	Hub Piloted Hub Covers - includes 1 Hub Cover, 10 Screw on Hug-A-Lugs with Clamps, 1 Wrench Fitting: Cover is secured by screwing the 001881 onto the inner clamp. Inner clamp is placed on stud threads.	Hub Piloted	33mm - 001881



Alcoa® Hug-A-Lug Nut Covers 33mm Hex 2 Piece Flange Nuts (Hub Piloted Wheel) Heights 27-31mm (Supplied Each)

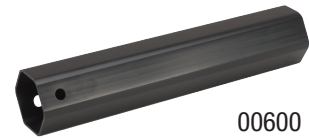
Part No.	Description	Finish
001851	For 33mm Wheel Nut - Screw Direct Onto 22mm	Chrome
000181	For 33mm Wheel Nut -Push-on Type	Chrome
001881	Off-White Interlocking Clip	Off White



001851

Alcoa® Hub Cover System Cap Nut Cover Wrench

Part No.	Description	Finish
000600	Cap Nut Cover Wrench for Hub Piloted Hug-A-Lugs	Chrome



00600

Alcoa® Stainless Steel Nut Covers

Part No.	Description	Finish
BALCOV32	Branded Nut Cover Suit Retro-Fit 32mm Nuts	S/S
BALCOV33	Branded Nut Cover Suit Retro-Fit 33mm Nuts	S/S
BALGRIP	Pliers for Stainless Steel Wheel Nut Covers	



BALGRIP

Alcoa® Hug-A-Lug Covers for 1.5" Hex Nut (Ball Seat, with clamps)

Part No.	Description	Finish
001551	For 1.5" Hex Ball Seat Nut, with clamps	Chrome



Alcoa® ISO Retro Fit Sleeve Nuts Steer Wheels ISO Retro Fit Sleeve Nuts - Dacromet Treated

Part No.	Description
B5780/32	M22 x 1.5mm - 32mm Dia/Hex Head Short Sleeve Nut - Single Wheel
B5780-32LH	M22 x 1.5mm Short Sleeve LH Thread Single Steel Wheels
B6142	M20 x 1.5mm Short Sleeve Nut for Single Steer Wheel
5784.32.00	7/8"-11 BSF Sleeved Nut for Single Mounting Scania with 32mm Bolt Holes



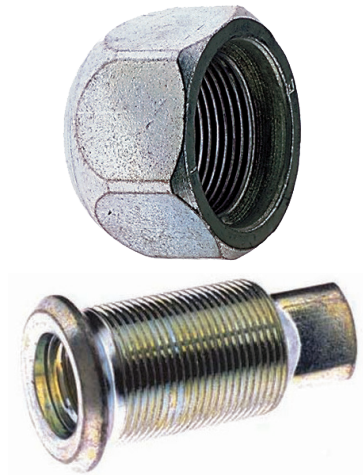
Alcoa® Rear Wheels ISO Retro Fit Sleeve Nuts - Dacromet Treated

Part No.	Description
B5781/32	M22 x 1.5mm Long Sleeve Nut for Dual Rear Wheels
5781-32LH	M22 x 1.5mm Short Sleeve LH Thread Single Steel Wheels
B6143/30	M20 x 1.5mm Long Sleeve Nut for Dual Rear Wheels
B5781/32USA	M22 x 1.5mm Long Shank Sleeve Nut Dual Rear Wheels
5785.32.00	7/8"-11 BSF Sleeved Nut for Dual Mounting Scania with 32mm Bolt Holes



Alcoa® Cap Nuts for Ball Seat Wheels Outside Front Wheel Nuts

Part No.	Description
NF24-R	24mm x 1.5mm - Front, Right Hand Thread Wheel Nut
NF24-L	24mm x 1.5mm - Front Left Hand Thread Wheel Nut
NF20-R	20mm x 1.5mm - Right Hand Wheel Nut
NF20-L	20mm x 1.5mm - Left Hand Wheel Nut



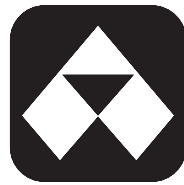
Alcoa® Inside Rear Wheel Nuts

Part No.	Description
NR20-R	20mm x 1.5mm & 30 x 1.5mm Right Hand Inner Cap Nut
NR20-L	20mm x 1.5mm & 30 x 1.5mm Left Hand Inner Cap Nut
407422	M22 x 1.5" 26mm E-Z Mount Sleeve





INNOVATION
IS IN OUR DNA



ALCOA
WHEELS

INNOVATING ALUMINIUM WHEELS
FOR OVER 70 YEARS

BRANCHES NZ-WIDE | 0508 677 704 | TWLNZ.CO.NZ

Proudly Playing a Part
in NZ Road Transport
since 1966

