

An aerial photograph showing a diver in a red and orange suit and yellow helmet on the red-painted deck of a ship. The diver is positioned near a yellow and black life vest. A rope extends from the diver down into the dark blue water. In the distance, another diver is visible in the water. The ship's hull is visible on the left side of the frame.

# VERTeST

## Capabilities Statement



# VERTEST



## NDT / Inspection

- NATA Accreditation
- Eddy Current Inspection
- Ultrasonic Inspection
- Phased Array Ultrasonic Inspection
- Dye Penetrant Inspection
- Magnetic Particle Inspection
- In-service Inspection - Pressure Equipment (AICIP)
- MFL Floor Scanning
- Welding Supervision
- NACE Coating Inspection
- Concrete Inspection
- Pipe Inspection
- Structural Inspection
- Overhead Crane Inspection
- Turn Key Tank Inspection (Inspection, Repair, Sign Off)
- Video Survey
- Still Photography



# VERTEST

## Project Examples

### Inspection & Maintenance - Liberdade Fso, Bayu Udan

Liberdade was the world's first constructed dual FSO (Floating, Storage and Offloading) ship for Bayu-Udan field for Conoco Phillips. Vertest's tasks included providing UT thickness, UT Weld Scanning, Magnetic Particle, Dye Penetrant and Visual NDT Methods to the FSO Hull by double Rope Access.

Other inspections carried out:

- The weld scanning inspection of the deck fairleads
- Magnetic particle Inspection of bevel edges on flanges for refridge maintenance work
- Magnetic particle Inspection of Lifting lugs
- UT thickness Inspection of the deck (areas of visible severe corrosion)



### Methanex Natural Gas Plant

CUI (Corrosion Under Insulation) inspections were undertaken to all pipe work. All work at Methanex was completed on pipe racks from ropes at height.

By utilising rope access the pressures of supplying large quantities of unavailable scaffolders and scaffolding was eliminated.

Our technicians moved through the pipe racks swiftly and caused no disruption to surrounding contractors.



### Wagon Yoke Inspection

At Pacific National's Dysart yard, Vertest were called upon to work alongside Pacific National in testing and creating a condition monitoring strategy to prevent failures leading to improved productivity by minimising down time and unexpected stoppages. This work needed to be conducted simultaneously with other works on the wagons, giving a seamless flow to their operation.

Pacific National utilise Vertest's professional knowledge to position drilled access holes in the wagons to allow access to the areas that require inspection. Vertest created calibration pieces and provide a Phased Array Ultrasonic testing technique that allows identification and sizing of any cracked areas.



### Chimney Stack Structural Survey

Vertest completed an integrity survey of the 60m high Double Brick lined Chimney Stack working with Geovert and GHD Consultants.

The Chimney stack was accessed by aide, ascending from the ground up using Hilti Mechanical Shear Set Bolts. Cover meters were used to map reinforcing and plot locations for core samples. Once core samples were taken holes were entered with a Bore Scope to survey strata and lead chimney lining seals. Schmitt Hammer and Impact Echo tests were used. On completion of testing holes were repaired.

As part of the work a structural integrity survey of the existing Access Ladders and Platforms was under taken.





# VERTEST

## Project Examples

### Queensland Alumina Limited - Service Contract

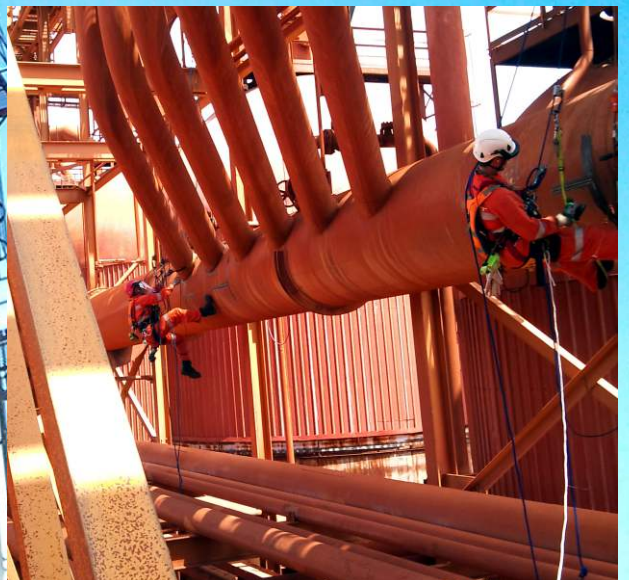
In Gladstone Vertest provide Rope Acces NDT and Coatings Inspection services at the QAL Refinery (one of the world's largest alumina refineries).

Vertest plays a crucial role in providing 3rd party NDT to Head contractor Geoverst who carry out Mechanical and Structural repairs by Rope Access. Vertest is part of a team that consists of a WTIA cert 10 welding supervisor, L3 NDT supervisor and techs, coded welders, fitters, riggers, Blasters, Painters and Tradesman all of whom work by Rope Access.

The methods used have created significant cost savings for the client by eliminating the use of cranes and man baskets to carry out inspections as well as eliminating the need to build and strip scaffold.

The following is a selection of areas of the Refinery where Vertest have worked carrying out inspections:

- Aux Tower Make Up Lines
- Bauxite Unloaders
- Boilers
- Bucket Elevator Shafts
- Caustic Tanks
- Chimney Stack Ladders
- Coal Silos
- Condensation Tanks
- Conveyors
- Cooler Tower Ball Mills
- Cranes
- Cyclones
- Day Bins
- Digesters
- Draft Tubes
- Fan Shaft Vent Valves
- Flash Tanks
- Flumes
- Liquor Relay Tanks
- Mill Retention Tanks
- Mud Tanks
- Oil Tanks
- Precipitation Tanks
- Pump Off Pipes
- Relief Lines
- Settler Tanks
- Slurry Density Control Tanks
- Test Tanks
- Train Loader Bins
- Washer Tanks
- Washer Feed Lines
- Wharf Pipe work





# VERTEST

## Project Examples

### Red Mud Dam

QAL Refinery's Red Mud Dam pipeline crosses the South Trees tidal inlet where Vertest were contracted to perform structural inspections over water.

Tasks included various surface coating inspections including overseeing the quality of preparation and coating application to structural steel, removal and replacement of Denso corrosion systems, sea pile cap and structural fastener inspections.

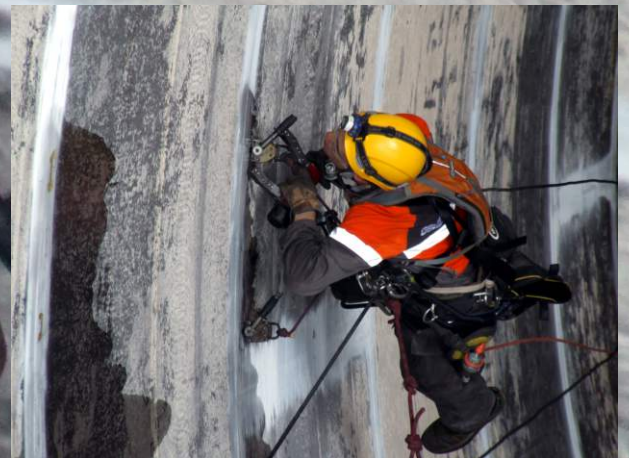


### Gove Agglomerator Tank

Vertest completed a full turnaround of the tank which included MT & UT to the Tank Shell, Launder Chutes, internal and External Tank Nozzles, Draft Tube Hangers & Support Stays as well as visual inspection of the Draft Tube Assembly, Agitator Steady Bearing and Propeller Housing and Agitator Assembly.

All works were completed by Rope Access.

As part of the scope Vertest completed Magnetic Flux Leakage Floor Scanning.



### Cement Australia, Cement Ball Mill 1

Vertest have been contracted by Cement Australia to carry out Ultrasonic Thickness testing and MPI to various plant including Cooling Towers and Ball Mills. Rope Access has decreased the downtime of plant and eliminated scaffolding leading to increased cost savings.



## GEOVERT

**Geovert** is an engineering and construction company that provides innovative difficult access solutions for industry clients in the Mining and Oil & Gas sectors. **Geovert** operate through-out the Asia Pacific region with offices across Australia, New Zealand, Singapore and Indonesia. The company operates two divisions; Ground Support and Asset Integrity Maintenance, which is strengthened by the wholly owned subsidiary NDT company, **Vertest**.

### Asset Integrity Maintenance

The division provides the following comprehensive range of inspection, construction & maintenance services:

- Inspections: Visual, CUI & NDT
- Fabric Maintenance: Blasting, Painting, Coatings & Insulation
- Mechanical & Structural Maintenance: Fabrication, Installation, & Welding
- Installation of non-scaffold access platforms
- Rope Access, Rigging & Heavy Lifting



# VERTEST

## Accredited Quality Assurance

Vertest is accredited by **NATA** to perform:

- 6.50 Ultrasonic examination of materials
- .10 Welded ferritic steel joints
- .41 Rolled or wrought steel product
- 6.51 Ultrasonic thickness testing
- .01 Material thickness - spot or grid measurements only
- Magnetic particle testing
- .01 Magnetic flow method – AC magnetization
- 6.71 Penetrant testing
- .01 Water washable method
- .02 Solvent removable method

We fully comply to ISO 9001:2008 and OSHAS 18001





# VERTEST



## Benefits of Rope Access

Comparisons between different industries working at height show conclusively a considerably lower accident rate than more traditional access methods. Several factors account for the move towards rope access.

- Rope Access requires minimal setup time to complete the respective work scope, for example a scaffold may take longer to erect than the actual time taken to complete the job
- Vertest utilises skilled tradespersons including inspectors, coded welders, mechanical fitters, riggers, electricians, etc. qualified in rope access to undertake various tasks on the worksite
- All Vertest rope personnel are trained and certified to international standards.





**Conventional method for mag  
particle inspection inside tank**

Erect scaffold  
4 men x 120 hours



Blast, buff & surface  
preparation  
1 man x 6 hours



Inspection of works  
1 man x 3 hours



Dismantle scaffolding  
4 men x 120 hours

**Total Man Hours = 249**

**Technical access method for  
mag particle inspection inside tank**

**VERTEST**

Abseil to worksite

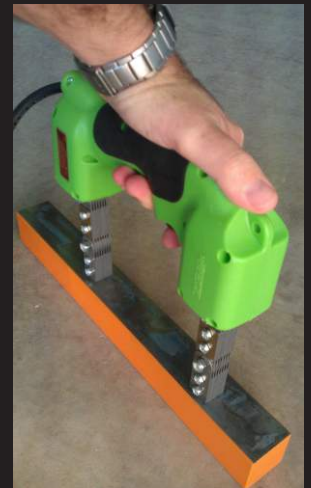
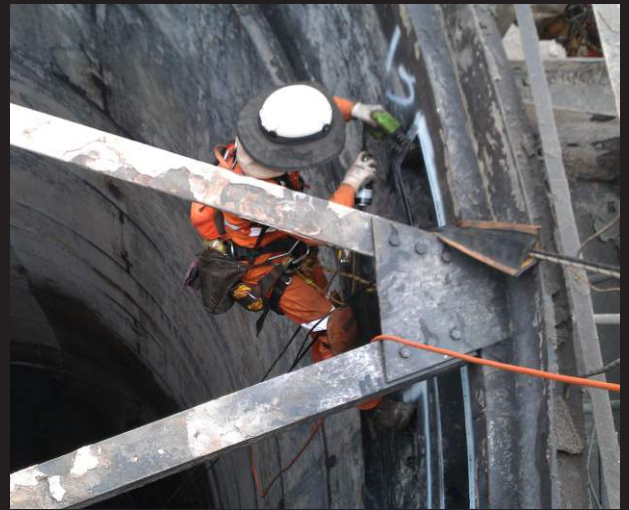
Blast, buff & surface  
preparation

Inspection of works

Derig worksite

3 men x 10 hours

**Total Man Hours = 30**



**Rope Access NDT Specialists**

**VERTEST**

**[www.vertest.com.au](http://www.vertest.com.au)**

**HEAD OFFICE**  
P +61 2 9700 7975  
F +61 2 8338 1550  
1 / 42 Church Ave  
Mascot  
NSW 2020  
AUSTRALIA

**GLADSTONE**  
P +61 7 4979 2870  
F +61 2 8338 1550  
1/24 South Trees Dr  
Gladstone  
QLD 4680  
AUSTRALIA

**PERTH**  
P +61 8 9361 6215  
F +61 2 8338 1550  
6 Basinghall Street  
East Vic. Park  
WA 6101  
AUSTRALIA