

**Manufactured
for quality and
performance since 1906,
that's LONGEVITY.**

GALLANT

WALL MOUNT



439 Stainless Steel
Heat Exchanger



CTRLMAX Control System
with 60 EZ Second Setup



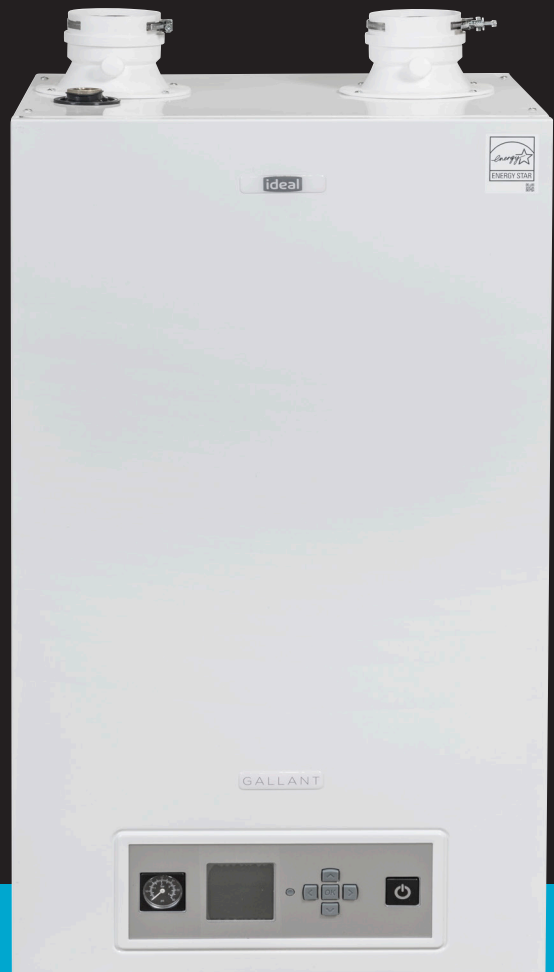
Extensive Venting Options



Inhibitor Included



NG and LP Specific Models



Install with confidence, a quality boiler that lasts.



Cascade Control
for up to
Six Boilers



Multi-Boiler
Cascade Piping
System Available



Quick-Dose
System Inhibitor /
Protector Included



Two Reset
Curves / Set Points



4" Vent
up to 100'



The Gallant is engineered with reliability in mind and each product is manufactured from our factory using the No-Fault Forward Production System where products receive over 200 quality checks before leaving the factory.



Cascade Control
for up to Six Boilers



Multi-Boiler Cascade
Piping System Available



Quick-Dose System Inhibitor /
Protector Included



Two Reset
Curves / Set Points



4" Vent up to 100'



Ideal Advantage Warranty Program:
Up To 12 Years Heat Exchanger /
6 Yrs Parts / 3 Yrs Labor



Stainless Steel Fire Tube
Heat Exchanger



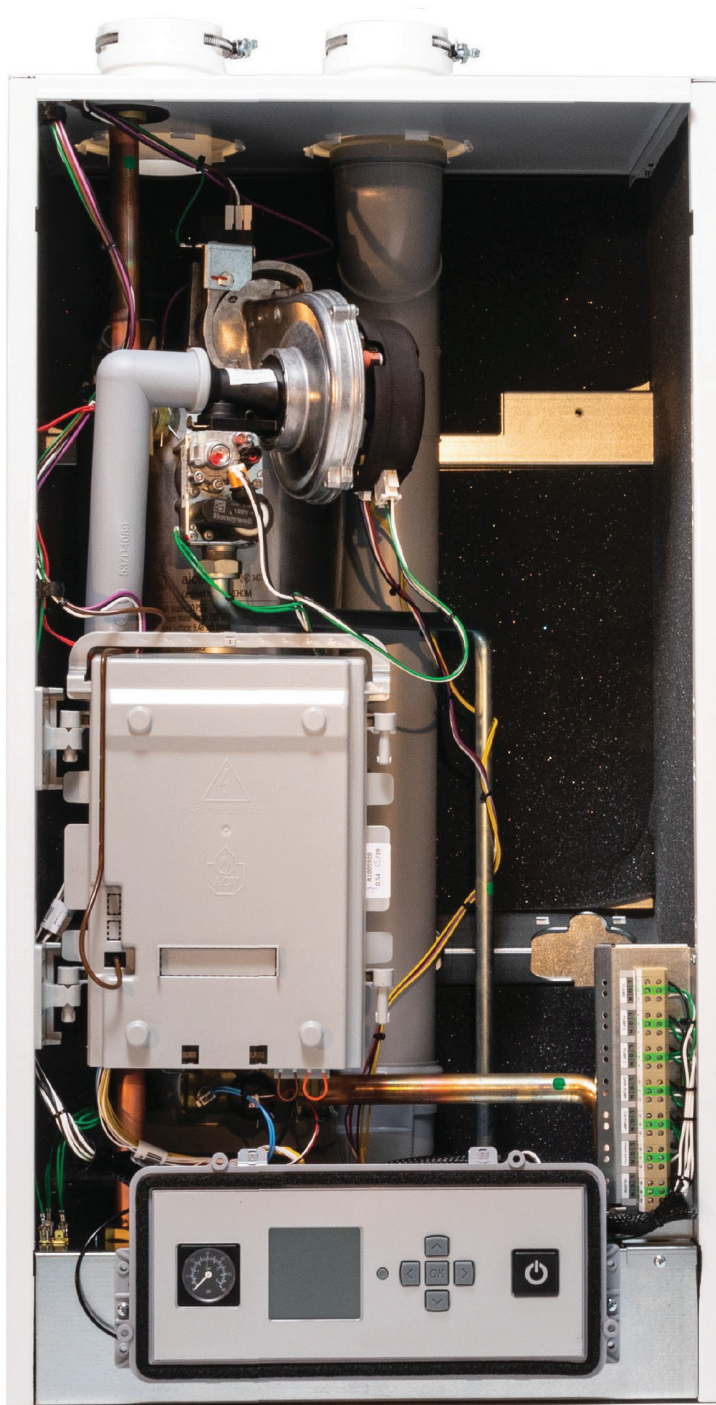
Ctrmax Control System:
Fast And Easy 60 Sec Set Up



Extensive Venting Options



No Fault Forward
Production System



NO FAULT FORWARD
MEANS QUALITY

GALLANT MODELS

Wall Model (NG)	IDGA250	IDGA299	IDGA399
Wall Model (LP)	IDGA250LP	IDGA299LP	IDGA399LP

PERFORMANCE SPECIFICATIONS

FUEL	NG & LP	NG & LP	NG & LP
Input Modulation (MBH)	53.6 to 240	72.5 to 299	72.5 to 399
AHRI Net Rating (MBH)	192	242	330
DOE Heating Capacity (MBH)	222	278	379
AFUE	95%	95%	95.1%**
Water Volume Gal.	4.5	7.4	7.4
Turndown Ratio	5.5:1	4.1:1	5.5:1

TECHNICAL DATA

Vent/Air Diameter	3"	4"	4"
Gas Connection	3/4"	1"	1"
Supply / Return Connections	1-1/4"	1-1/2"	1-1/2"
Weight (lbs.)	140	210	216
Cabinet Depth	17-5/16"	23-5/8"	23-5/8"
Cabinet Width	19-3/4"	24-7/8"	24-7/8"
Cabinet Height	36-9/16"	39-3/8"	39-3/8"

Domestic performance based on average water temperature of 108° at mixing valve outlet and 50° inlet.

**Thermal Efficiency

IDEAL ADVANTAGE

A warranty program that rewards both the contractor and homeowner.

WARRANTY TYPE	LABOR ALLOWANCE	PARTS	HEAT EXCHANGER
ELITE*	3 YEAR WARRANTY	6 YEAR WARRANTY	12 YEAR WARRANTY
PLUS**	2 YEAR WARRANTY	5 YEAR WARRANTY	10 YEAR WARRANTY
STANDARD	0 YEAR WARRANTY	2 YEAR WARRANTY	10 YEAR WARRANTY

*Register Boiler (providing customer and contractor information); Upload a photo of readings from your combustion analyzer

**Register Boiler (providing customer and contractor information)

