
Flue Sensor Repair Kit for Prestige Solo 175, 250 and 399



Kit Part Number: PSRKIT77

Parts List

1. Flue Sensor Mounting Plug (PSPLG06)

Recommended tools:

- A. Vise grip
- B. 10 mm or adjustable wrench
- C. Can of WD-40
- D. Clean dry cloth
- E. Steel wool or fine metal sand paper
- F. Fine metal file
- G. Soap & water solution

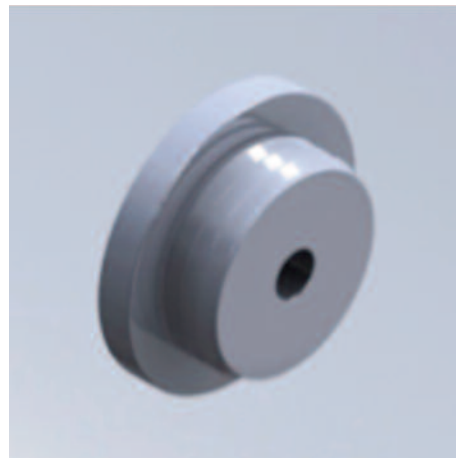


Fig. 1: Flue Sensor Mounting Plug

⚠ WARNING

Indicates a potentially hazardous situation which, if ignored, can result in serious injury or substantial property damage.

NOTICE

Indicates special instructions on installation, operation or maintenance, which are important to equipment but not related to personal injury hazards.

⚠ WARNING

For your safety, turn off electrical power supply at service panel and allow unit to cool before proceeding to avoid possible electrical shock and scald hazard. Failure to do so can cause severe personal injury or death.

⚠ WARNING

Failure to follow instructions below can result in severe personal injury or damage if ignored.

- Instructions are for a qualified installer/service technician.
- Read all instructions before proceeding.
- Follow instructions in proper order.

Flue Sensor Repair Kit for Prestige Solo 175, 250 and 399

NOTICE

This flue sensor mounting repair kit **CAN ONLY BE USED IN CASES WHERE THE STAINLESS STEEL FLUE SENSOR MOUNTING PORT BODY IS NO LONGER ATTACHED TO THE STAINLESS STEEL FLUE PIPE** and where the replacement of the flue pipe is hindered due to limited installation clearance.

NOTICE

For Solo 175 and 250 boilers, this flue sensor mounting plug can be used directly on flue pipes equipped with a light grey colored combustion test port cap. **DO NOT ATTEMPT TO USE THIS PLUG ON Solo 175 and 250 BOILERS EQUIPPED WITH A WHITE COLORED COMBUSTION TEST PORT CAP unless a step bit or self centering bit is used to drill the sensor port opening to 5/8"**.

Instructions

1. Turn power to unit "OFF" and allow it to cool.
2. Shut off main gas supply to the inlet of the unit at the main manual gas shutoff valve to the unit.
3. Remove the front door and padlock the electrical shut-off to the unit to prevent accidental activation. For residential systems, shut off breaker in electrical panel.
4. Remove sensor wiring from the flue sensor.
5. Using a vise grip, hold the stainless steel flue sensor mounting port body and unscrew the flue sensor from the mounting port body with 10 mm or adjustable wrench. Clean off outside of flue sensor with a damp cloth.
6. Carefully spray a small amount of WD-40 only on discolored exterior of flue pipe to remove discoloration. **DO NOT EXPOSE BOTTOM OF HEAT EXCHANGER /FLUE PIPE GAS-**

KET TO OIL. Soak for 2 – 3 minutes, then wipe off with a dry cloth.

7. Lightly sand off the discoloration from the flue pipe. Repeat cleaning process if necessary.
8. Carefully check sensor mounting port for burrs. If necessary, debur rough internal edges of sensor mounting port with fine metal file. Make sure to remove all sharp edges from the flue pipe.
9. Rinse flue sensor mounting port with water and carefully wipe any oil residue off flue pipe and port with clean cloth.
10. Insert new flue sensor mounting plug into existing flue pipe sensor mounting port hole. Make sure plug is evenly inserted all the way into the hole until the larger diameter of the plug is flush with the flue pipe.



Fig. 2: Installation of Flue Sensor Mounting Plug

11. Moisten the shaft of the flue sensor with water and carefully slide flue sensor into the flue sensor mounting plug until threaded section is flush with the plug. The plug will expand slightly to ensure a tight fit with the flue pipe.
12. Slide sensor shaft into the mounting plug until it is fully inserted.

Flue Sensor Repair Kit for Prestige Solo 175, 250 and 399



Fig. 3: Installation of Flue Sensor in Mounting Plug

13. Install flue sensor wiring back to the spade connections on the flue sensor.
14. Open manual gas shut-off valve, remove electrical padlock and restore power to the unit.
15. Turn on the unit and verify proper boiler operation.
16. Ensure proper sealing of the flue sensor, plug and flue pipe using soap and water solution.