
Igniter/Sensor Replacement Kit for PRESTIGE



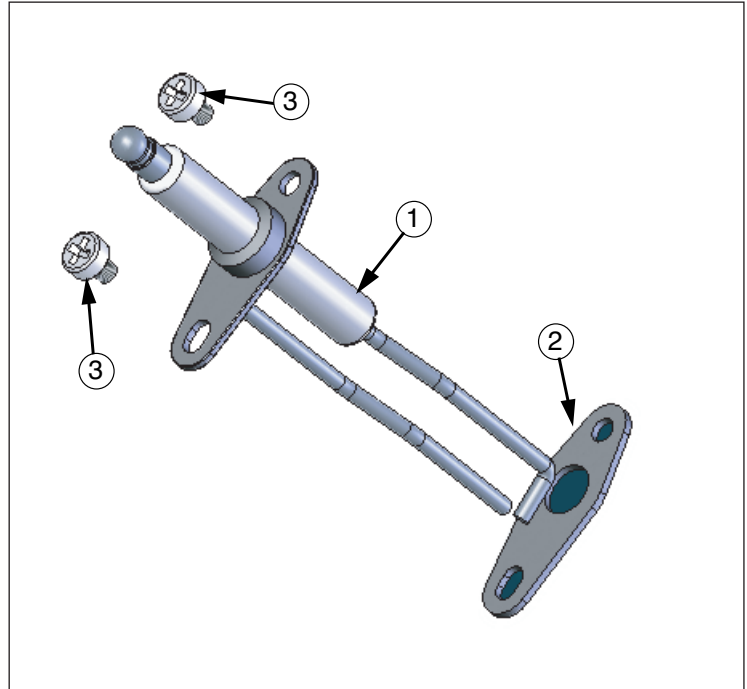
Kit Part Number: PSRKIT15

Parts List:

1. Igniter/Sensor
2. Igniter/Sensor Gasket
3. Philips Head Screws (2)

Recommended Tools:

- A. Phillips Screw Driver.
- B. Flat Blade Putty Knife.



WARNING

Indicates a potentially hazardous situation which, if ignored, can result in serious injury or substantial property damage.

NOTICE

Indicates special instructions on installation, operation or maintenance, which are important to equipment but not related to personal injury hazards.

WARNING

Failure to follow instructions below can result in severe personal injury or damage if ignored.

- Instructions are for a qualified installer/ service technician.
- Read all instructions before proceeding.
- Follow instructions in proper order.

WARNING

For your safety, turn off electrical power supply at service panel and allow unit to cool before proceeding. Failure to do so can cause severe personal injury or death.

Igniter/Sensor Replacement Kit for PRESTIGE

Instructions:

1. Turn power to the unit “OFF”.
2. Disconnect the ignition cable from the end of the Igniter/Sensor.
3. Unscrew the Phillips screws attaching the Igniter/Sensor to the burner mounting plate. Discard the old Igniter/Sensor.

4. With the Igniter/Sensor gasket in place reassemble the Igniter/Sensor to the burner mounting plate using the two new Phillips head screws from the kit.

NOTICE

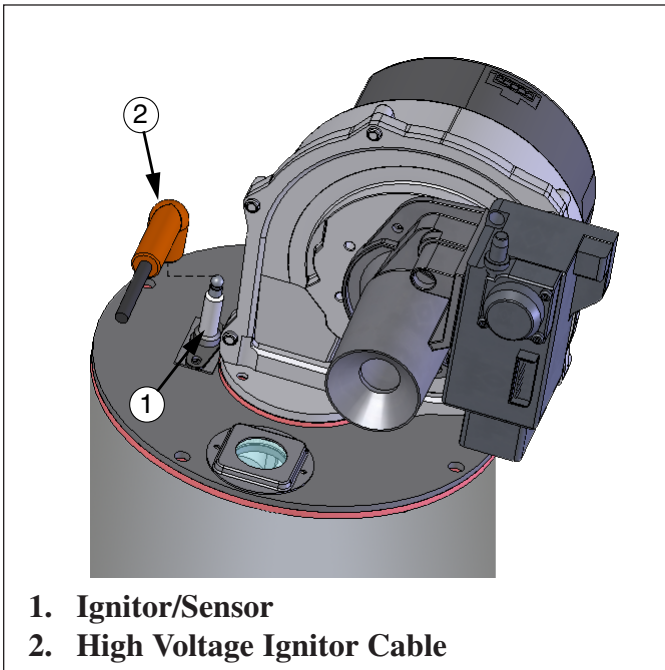
The mounting hole for the igniter/sensor is keyed and will only allow the igniter to be installed in the proper orientation.

NOTICE

Ensure ground wire is re-attached when inserting mounting screws.

5. Attach the ignition cable to the end of the Igniter/Sensor.

6. Turn power to the unit “ON”. The unit is now ready to be placed back into service.

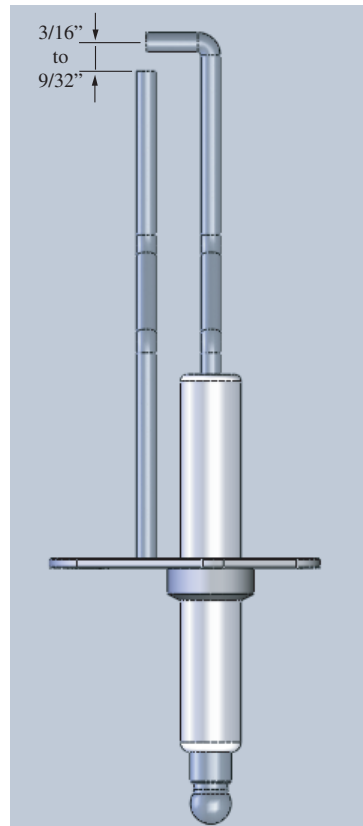


NOTICE

There is a gasket between the igniter/sensor and burner mounting plate. If the gasket “sticks” to the mounting plate use a flat blade putty knife to remove any gasket material. Make sure not to scratch or score the mating surface.

NOTICE

For the reassembly process do not use adhesives on ANY gasket surface.



Recommended Igniter Gap