

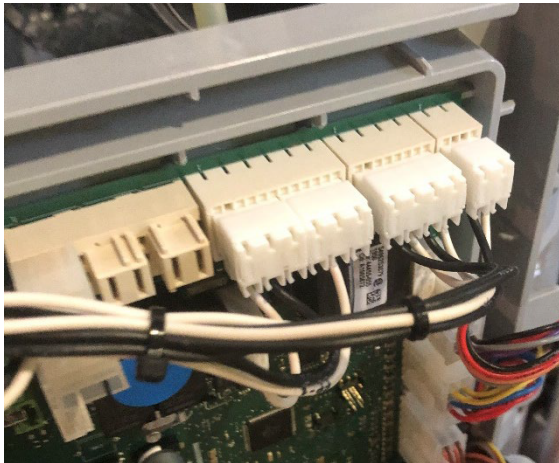
ENGINEERING BULLETIN

Subject: Exalt Gas Valve Plug

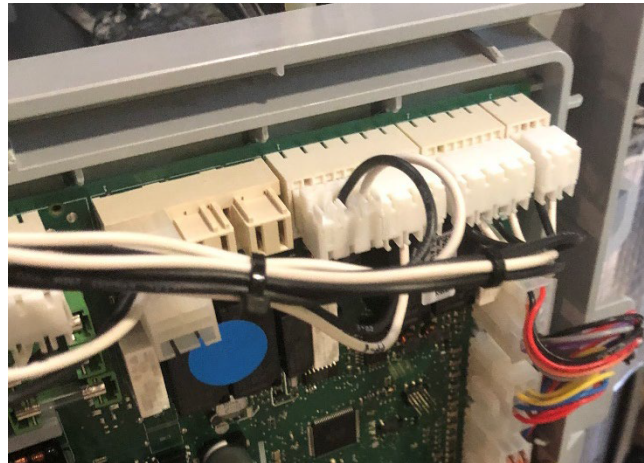
Date: 5/12/2021

The Exalt Gas Valve Plug (X9) is capable of being installed backwards. Do not operate the boiler with the plug in a backwards orientation as the boiler will not operate correctly and damage to the blower will occur requiring it to be replaced. See the photos below for the correct orientation of the plug and correct if it is plugged in the incorrect orientation.

Correct



Incorrect



Please contact technical support at techsupport@idealheatingna.com or 800-411-9999 x575 with any questions.