

# Prestige Burner Mounting Plate Replacement



Kit Part Number	Description	Model
PARKIT55	Burner Mounting Plate Replacement	Prestige 250
PARKIT75	Burner Mounting Plate Replacement	Prestige 299/399

### Each Kit Includes:

- Burner Mounting Plate
- Burner Mounting Plate Nuts
- Burner Head Gasket
- Burner Head Screws
- Igniter Gasket
- Igniter Screws
- Combustion Chamber Insulation
- Blower Gasket

### Recommended Tools:

- Adjustable Wrenches
- Phillips Head Screwdriver
- Torx Screwdrivers



**Indicates a potentially hazardous situation which, if ignored, can result in serious injury or substantial property damage.**



*Indicates special instructions on installation, operation or maintenance, which are important to equipment but not related to personal injury hazards.*



**For your safety, turn off electrical power supply at service panel and allow unit to cool before proceeding to avoid possible electrical shock and scald hazard. Failure to do so can cause severe personal injury or death.**



**Failure to follow instructions below can result in severe personal injury or damage if ignored.**

- **Instructions are for a qualified installer/ service technician only.**
- **Read all instructions before proceeding.**
- **Follow instructions in proper order.**

# Prestige Burner Mounting Plate Replacement



## 1. Preliminary Instructions:

1. Verify that the replacement kit is correct for the model of boiler. See table on page 1.
2. Carefully open and unpack the PARTS BOX from its shipping carton.
3. Carefully remove and check for any damage.

### NOTICE

*Do not proceed with installation and contact Triangle Tube right away if the Burner Mounting Plate is damaged in any way.*

4. Turn off the electrical power supply to the boiler.
5. Close the manual gas shut off valve to the unit.



Fig. 1: Prestige 250

## 2. Removal of the Burner Mounting Plate

1. Remove front jacket panel on the top of the boiler
2. Disconnect all the wires from the gas valve, blower and igniter.

### NOTICE

*Mark the proper location of all wires before removing them.*

3. Disconnect the gas supply piping to the gas valve. Unscrew the nut/screws on the gas piping at the bottom of the gas valve. Do not discard the gasket (299/399 only) as it will be reused.
4. Remove the bolt securing the blower clamp to the burner plate. Do not discard the bolt as it will be reused.
5. Pull off the blower clamp and transformer bracket.
6. Remove the blower/venturi/gas valve assembly from the unit.

### NOTICE

*Do not discard the metal ignition bracket, clamp or rubber flapper from the installation as they need to be reinstalled.*

7. Unscrew the two screws securing the igniter to the mounting plate.

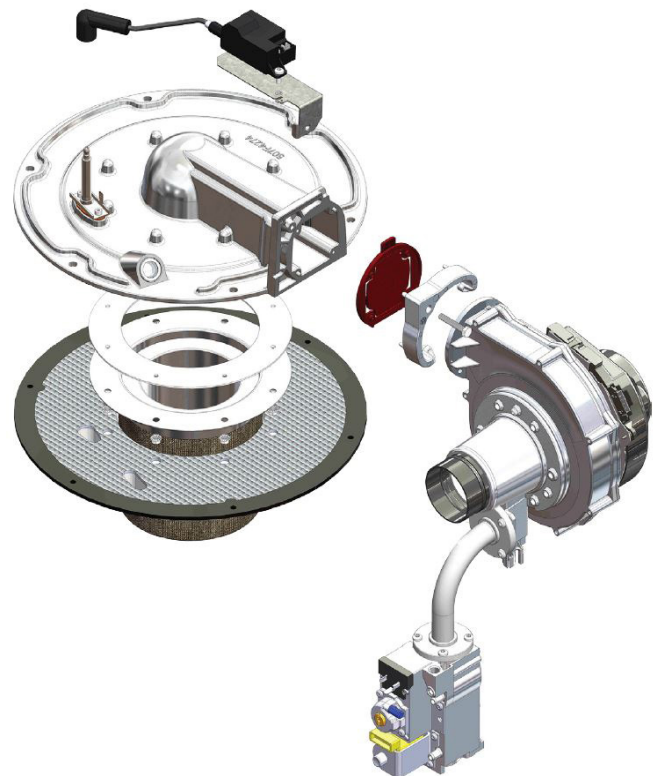


Fig. 2: Prestige 299-399

# Prestige Burner Mounting Plate Replacement



- Carefully remove the igniter from the burner mounting plate. Discard the igniter gasket as a replacement has been provided

## NOTICE

Ensure the igniter is not damaged when removing it from the heat exchanger. Contact Triangle Tube right away if they are damaged.

- Unbolt the nuts securing the burner mounting plate to the heat exchanger.
- Remove the burner mounting plate by lifting straight up until the burner clears the insulation. Note the orientation of the blower connection on the mounting plate as the replacement must match this alignment.

## NOTICE

Ensure the burner head is not damaged when removing from the heat exchanger. Contact Triangle Tube right away if they are damaged.

- Note the location of the igniter and sight glass cutouts in the old combustion chamber insulation as the replacement must match this alignment. Remove and discard the insulation as a replacement has been provided.
- Unscrew and remove the Burner Head from the bottom of the burner mounting plate. Discard the old burner gasket as a replacement has been provided

### 3. Installation of the new Burner Mounting Plate

- Screw the burner head with the new gasket to the bottom of the burner mounting plate to a torque of 27 - 31 in-lbs.

## NOTICE

For the Prestige 250, the burner head only fits with the flat portion of the burner head lip towards the igniter.

## NOTICE

For the reassembly process do not use adhesives on ANY gasket surface.

## WARNING

**Ensure the gasket is in place before reassembly. Failure to do so can result in death, serious injury or substantial property damage.**

- Install the new combustion chamber insulation into the heat exchanger with the igniter and sight glass cutouts matching the old insulation.

## NOTICE

If the insulation is not properly aligned, the igniter will be damaged on installation.

- Install the new burner mounting plate onto the heat exchanger. Ensure the blower connection is in the same orientation as the original. Ensure the igniter and sight glass cutouts match the insulation.
- Hand tighten the Burner Plate Mounting nuts. Then using a wrench tighten each nut to 44-53 in-lbs.

## WARNING

**Ensure the Burner Plate Mounting nuts are properly sealed in order to prevent a gas leak. Gas leaks can result in death, serious injury or substantial property damage.**

## WARNING

**Do not over tighten. Pinching or tearing of the burner plate gasket may occur causing the possible escape of combustion gases from the combustion chamber resulting in death, serious injury or substantial property damage.**

- Carefully install the old igniter with a new igniter gasket. Hand tighten the igniter screws. Once both screws are hand tight, torque each screw to 13-18 in-lbs.

# Prestige Burner Mounting Plate Replacement



**Ensure the igniter is properly sealed in order to prevent a gas leak. Gas leaks can result in death, serious injury or substantial property damage.**

6. Place the blower/venturi/gas valve assembly on top of the rubber flapper and on the mounting plate tabs to hold it in place.
7. Place the blower clamp and metal ignition bracket on top of the blower flange and install the blower bolt through the metal ignition bracket, blower, rubber flapper and into the burner mounting plate.
8. Ensure the blower is sitting on both mounting plate tabs. Ensure both sides of the clamp are properly seated on the blower. Hand tighten the blower bolt.
9. Tighten the bolt to secure the blower to the top plate to 62-71 in-lbs of torque.



**Ensure the blower is properly sealed in order to prevent a gas leak. Gas leaks can result in death, serious injury or substantial property damage.**

10. Re-connect the gas supply piping to the gas valve. Ensure the pipe gasket is properly seated before tightening the nut.



**Ensure the gasket is in place before reassembly. Failure to do so can result in death, serious injury or substantial property damage.**

11. Re-attach all the wires to the gas valve, blower and igniter.
12. Turn on gas supply to the inlet of the unit at the main manual shutoff valve to the unit. Check and test all gas connections for leaks. Repair leaks if found.



**Do not check for gas leaks with an open flame. Use a bubble test. Failure to check for gas leaks can cause severe personal injury, death or substantial property damage.**

13. Turn power to the unit "ON". The unit is now ready to be placed back into service.