

ENGINEERING BULLETIN

Subject: PRESTIGE Service Parts Kit

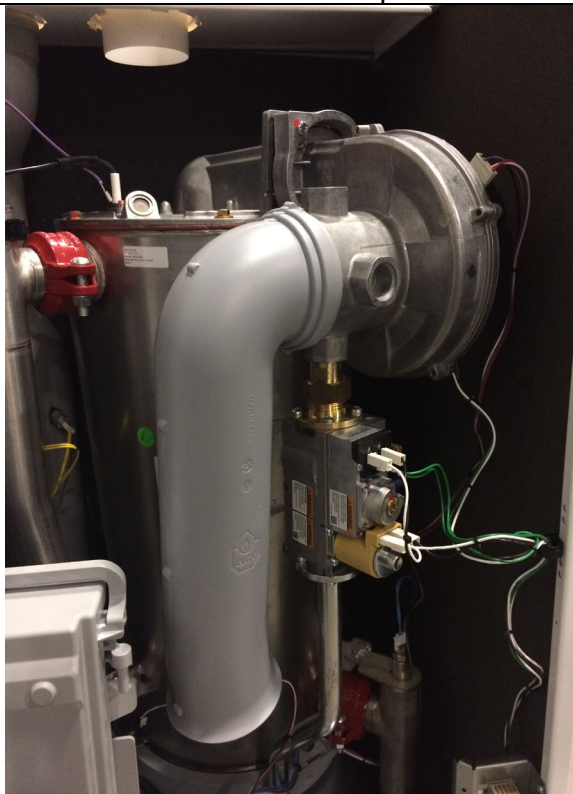
Date: 10/24/18

Prestige models PA299 & PA399 were equipped with a new gas train starting in March 2018. The new gas train configuration has different components which require a different service parts kit than the original. The original configuration requires service part kit PARKIT107. The new configuration requires service part kit PARKIT107A

The new gas train configuration applies to serial numbers after PA116181 (PA299 models) and PA116693 (PA399 models). Units with serial numbers below this may have been converted to the new configuration as well.

Refer to the pictures below to determine which Service Part Kit to use for your configuration.

Original Arrangement
Blower & Venturi 1 piece



New Arrangement
Blower & Venturi 2 pieces

