

Technical submittal

Products: **Halstock calorifier HS5002CO/HS500UV2CO**

Project:

Customer:

Date:

- ⊗ Indirect method of producing safe and hygienic domestic hot water
- ⊗ Fast recovery for constant hot water
- ⊗ Hot water cylinder and coil made out of corrosion resistant stainless steel for a long life backed up by a 5 year cylinder warranty
- ⊗ Twin coils for flexibility and high performance hot water
- ⊗ Can be integrated with solar thermal for a renewable energy option
- ⊗ Minimal heat loss for maximum economy thanks to layer of CFC-free polyurethane tank insulation under protective plastisol cladding
- ⊗ Highly efficient heat transfer from a corrugated coil design
- ⊗ Low maintenance as no sacrificial anodes or powered corrosion protection systems needed
- ⊗ Versatility in use – coupled to Hamworthy commercial boilers or backup via immersion heater
- ⊗ UK manufactured



	Halstock model	Units	HS5002CO / HS500UV2CO
Water	Capacity, nominal	litres	500
	Capacity with coil	litres	496
	Continuous output @44°CΔT	l/h	1843
	Continuous output @50°CΔT	l/h	1622
	Maximum working pressure, tank	bar	6
	Hydraulic test pressure	bar	9
Energy	Number of coils		2
	Lower coil output	kW	67.5
	Heat up time @50°CΔT, lower coil only	min	26
	Upper coil output	kW	27
	Heat up time @50°CΔT, top coil only	min	66
	Heat up time @50°CΔT, combined coils	min	19
	Recovery time 70% @50°CΔT, combined coils	min	13
	10 min peak output @50°CΔT	litres	770
	Coil max operating temperature	°C	100
	Coil max operating pressure	bar	3
	Upper coil tube diameter	DN	DN25
	Upper coil surface area	m ²	1
	Lower coil tube diameter	DN	DN25
	Lower coil surface area	m ²	2.5
Immersion	Reheat total delta T 50°C lower	mins	18
	Reheat total delta T 50°C both	mins	13
	Standby losses	kW/24hr	2.74
Misc.	ErP efficiency rating	-	C
	Immersion heater option, power	kW	6
	Immersion heater option, phase	ph	3ph/1ph
	Heat up time, Immersion only	hour	4.9
	Recovery time, Immersion only	hour	3.4
	Expansion vessel size	litres	35
	Weight empty	kg	115
	Weight full	kg	615

Every effort has been taken to ensure the details are accurate. Hamworthy Heating does not, however, guarantee the accuracy or completeness of any information nor does it accept liability for any errors or omissions in the information. Hamworthy Heating reserves the right to make changes and improvements which may necessitate alteration to product specification without prior notice.



Technical submittal

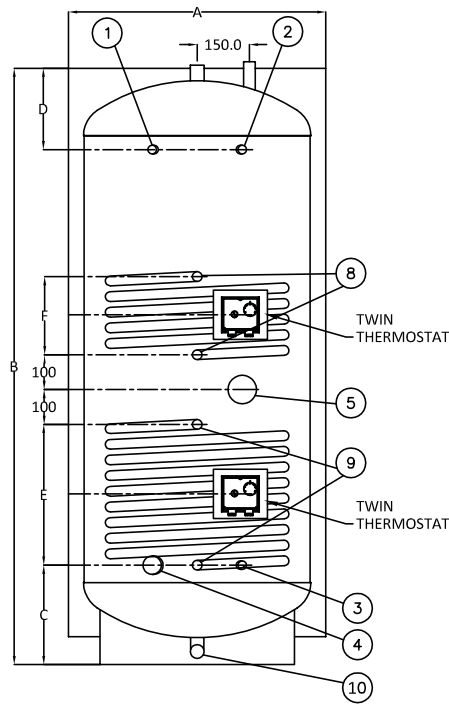
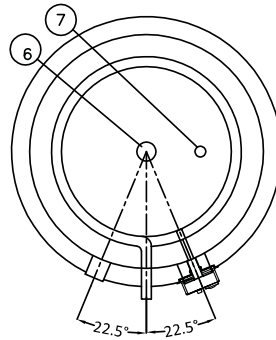
Products: **Halstock calorifier HS5002CO/HS500UV2CO**

Project:

Customer:

Date:

Dimensions



HS5002CO & HS500UV2CO

Note: All dimensions in mm unless otherwise stated.

Calorifiers																
Models	Dimensions (mm)							Connections (BSP Female)								
	A	B	C	D	E	F	G	1	2 & 3	4	5	6	7	8	9	10
	Dia.	Height	Inlet	2nd Return	Bottom coil centres	Top coil centres	Insulation	Aux port input	De Strat	Inlet	Immersion	Outlet	T&P	Top Coil Ø	Bottom Coil Ø	Drain
500	750	1715	286	234	495	225	50	½"	22mm Stub	1"	2¼"	1"	¾"	28mm Stub	28mm Stub	1"

Every effort has been taken to ensure the details are accurate. Hamworthy Heating does not, however, guarantee the accuracy or completeness of any information nor does it accept liability for any errors or omissions in the information. Hamworthy Heating reserves the right to make changes and improvements which may necessitate alteration to product specification without prior notice.