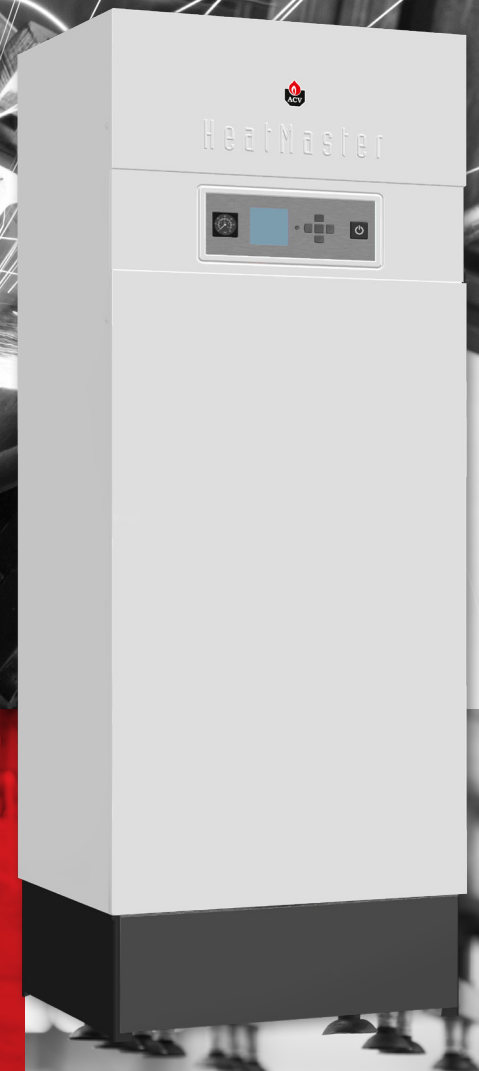




HEATMASTER TC SERIES

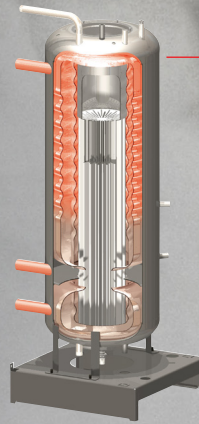
**HIGH EFFICIENCY CONDENSING
BOILER & DOMESTIC WATER HEATER**



HOW IT WORKS

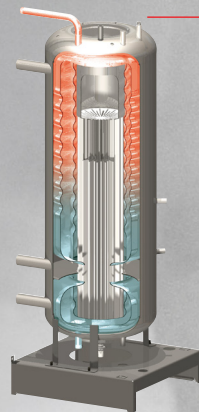
HEATMASTER TC

Did you know? The HeatMaster® TC is the only storage combination boiler in the world to fully condense during both hot water and space heating modes.



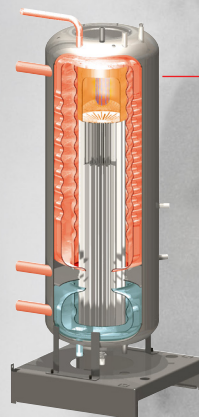
HEATING MODE

The cold boiler water enters the low temperature total condensing tank, which allows the HeatMaster® TC to fully condense. The upper tank of the HeatMaster TC is kept at a consistently high temperature to satisfy any heating demand.



HOT WATER MODE

The cold domestic water enters the lower domestic water tank and is pre-heated before entering the upper domestic water tank. Since the water entering the upper tank is preheated, it is maintained at high temperature. This makes the HeatMaster® TC always ready to supply hot water on demand.



HEATING & HOT WATER MODE

Once up to temperature, the HeatMaster® TC is capable of producing heat and hot water simultaneously.



EXCELLENCE IN HEATING
AND HOT WATER SYSTEMS

an ACV company



HEATMASTER TC

- 95% AFUE
- Exclusive "Tank-in-Tank" Technology
- Total Condensing in DHW & Space Heating
- Satisfies High Space Heating & DHW Demands
- 60 Second EZ Set-up
- Intelligent Troubleshooting
- Easy Serviceability

1. Universal Vent & Air Connections
2. Proven Modulating Premix Burner Assembly
3. Combustion Chamber
4. Stainless Steel Fire Tubes
5. Exclusive "Tank-in-Tank" Heat Exchanger
6. Low Temperature Total Condensing Tank
7. Polypropylene Flue & Condensate Pan
8. Internal Circulator to Equalize Internal Temperature
9. Easy Access Wire Terminal Strip
10. ACVMax Control
11. ACVMax Display
12. Polyurethane Foam Insulation

TYPICAL NON CONDENSING COMBINATION BOILER

HEATING HOT WATER

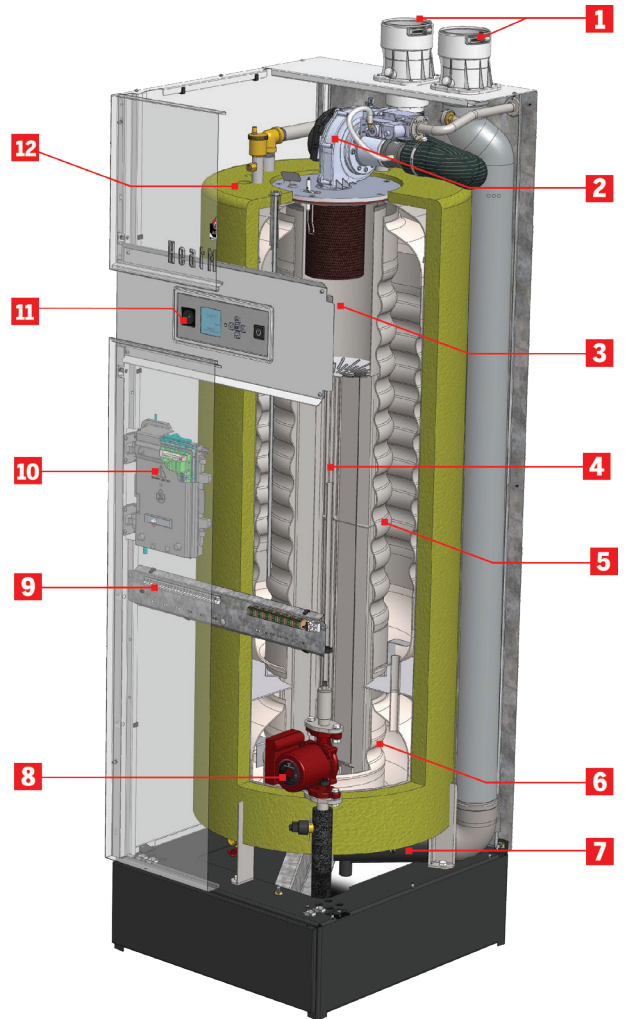
TYPICAL CONDENSING COMBINATION BOILER

HEATING HOT WATER

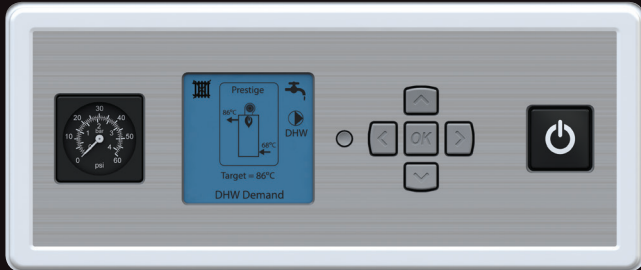
HEATMASTER TC TOTAL CONDENSING COMBINATION BOILER

HEATING HOT WATER

■ HIGH EFFICIENCY ■ LOW EFFICIENCY



SPECIFICATIONS & FEATURES



Choose from 6 standard heating applications to set up the boiler in 60 seconds or less.

- FINNED TUBE BASEBOARD
- CAST IRON BASEBOARD
- RADIATORS
- HIGH MASS RADIANT
- LOW MASS RADIANT
- FANCOIL

ACVMAX, USER-FRIENDLY CONTROL SYSTEM

Intelligent Troubleshooting

- Describes lockouts in plain english & suggests solutions
- Records sensor readings for 24 hours
- Stores last 8 errors

Multiple Zone Control

- Accepts 2 space heating calls with independent outdoor reset curves
- Simultaneously heat dual temperature heating systems with built-in mixing valve control
- Manage up to 2 space heating zones without an external zone control panel

Multiple Circulator Control

- Presets allow for quick configuration of 3 circulator outputs

Triangle Tube reserves the right to make product changes or improvements at any time without notice. [2017-7 HeatMaster Series Literature- 5/1/18 rev](#)

HeatMaster TC

MODEL	HM240TC	HM399TC
Input Modulation (MBH)	50 to 240	95 to 399
AFUE	95%	95%**
Turndown Ratio	4.8 : 1	4.2 : 1
Boiler Water Volume (Gal.)	33	33
Fuel	NG & LP	NG & LP
Continuous flow 70 F Temp. Rise* (GPM)	370	620
1st Hour Rating* (GPM)	410	660
Peak Flow (Gal/10 min)	110	155
Domestic Connections	1"	1"
DHW Volume (Gal.)	50	50
Supply/Return Connections	1-1/2"	1-1/2"
Gas Connections	3/4"	3/4"
Vent/Air Diameter	4"	4"
Cabinet Height (Inch)	85- 1/2"	85- 1/2"
Cabinet Width (Inch)	27- 1/4"	27- 1/4"
Cabinet Depth (Inch)	30"	30"
Weight (Lbs)	800	800

*Domestic performance based on average temperature of 120°F at mixing valve outlet and 50°F inlet.
 **Thermal Efficiency

CONTACT

If you have any questions or comments regarding our products and services, we'd love to hear from you! Please contact us through one of the options listed below.

Corporate office

T 1-856-228-8881

E info.na@acv.com

W triangletube.com

