



PRESTIGE Solo

Condensing High Efficiency Stainless Steel Wall Mounted Gas Boiler

Available in 5 Models from
60,000 to 399,000 Btu/Hr



- 96% AFUE - Energy Star Listed
- Fully Modulating
- Digital Display
- Direct Vent / Sealed Combustion
- Minimal Space Requirements

- Natural Gas or Propane
- Low NOx- SCAQMD Certified
- Higher Water Volume than Competitive Units
- Low Pressure Drop
- Quiet Operation

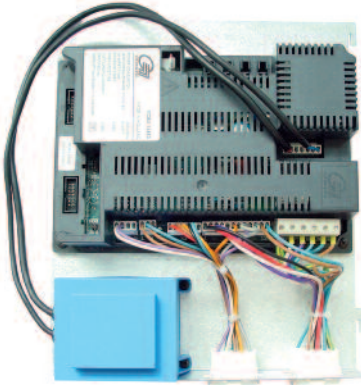


COMFORTABLE HEATING
AT THE LOWEST POSSIBLE
OPERATING COST



prestige

MCBA Control



The Prestige uses a microprocessor electronic control module that automatically adjusts blower speed and gas flow rate to modulate boiler firing rate to closely match boiler output to space heating or DHW heating demand. The module responds to signals from the room thermostat, supply and return water temperature sensors, flue temperature sensor, domestic hot water aquastat and outdoor temperature sensor.

- Digital display module
- Ignition control
- Operating control
- High temperature limit protection
- Modulating temperature control
- Low water protection
- Outdoor reset
- Domestic hot water priority
- Two pump controls (Heating and DHW)
- Boiler freeze protection

Stainless Steel Premix Burner Assembly

High grade stainless steel burner uses pre-mixed air and gas providing a 25% to 100% modulating firing rate. The Prestige burner features a long life, quiet operation, reliable spark ignition, and clean combustion for low NOx applications.

The blower, gas valve and venturi provide the proper gas and air mixture for precise combustion. The blower pulls in air and gas through the venturi. The air and gas mix inside the blower and are pushed into the burner for combustion. The gas valve senses suction from the blower and allows gas to flow only if combustion air is flowing.

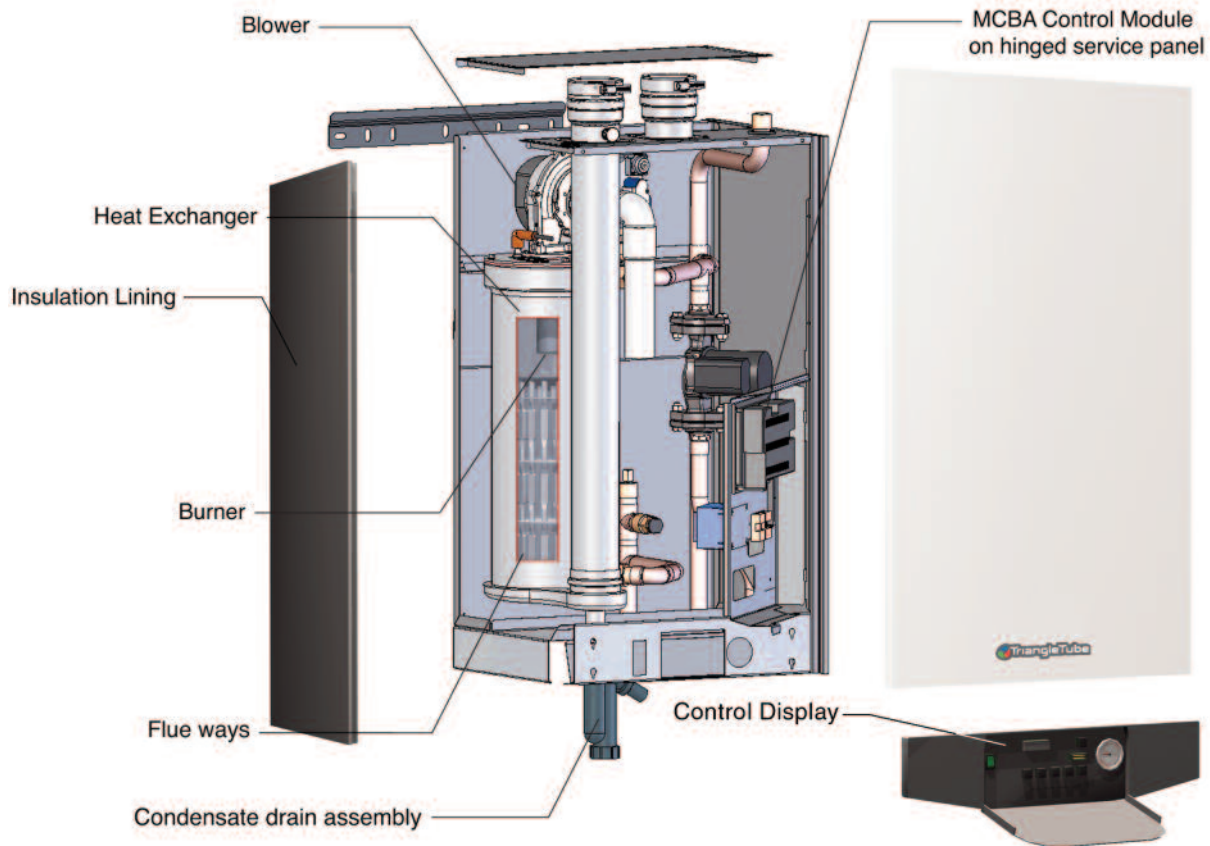


Control Panel with Digital Display



A 4-digit user's Interface Module is provided to display system operating status and fully adjustable parameter values as well as diagnostic codes for easy troubleshooting and optimum system performance.

Prestige Solo 110 Exploded View



The components of the Prestige are easily accessible for serviceability.
The Solo 60,175, 250 & 399 are shipped less the circulator.

Stainless Steel Heat Exchanger

A unique, highly efficient heat exchanger is at the heart of the Prestige.

- Unique geometry: 3 consecutive baffles direct water flow through the exchanger and around the combustion chamber for uniform heat transfer.
- Highest water content in the industry
 - Stable temperature control
 - Less sensitive to water flow
- 439 Grade Stainless Steel. Unparalleled resistance to corrosion
- Less sensitive to sludge
- Self cleaning: condensate washes combustion residue away resulting in a constant efficiency and reduced maintenance.
- Low pressure drop



prestige

Performance Specifications

| Model | Fuel | Input Modulation MBH | AFUE | DOE Heating Capacity MBH | NET I=B=R MBH | Water Volume Gal. |
|-------------|--------------------|----------------------|---------|--------------------------|---------------|-------------------|
| Solo 60 | Natural or Propane | 16 to 60 | 96% | 54 | 47 | 2.5 |
| Solo 110 | Natural Gas | 30 to 110 | 96% | 99 | 86 | 2.5 |
| Solo 110 LP | Propane Gas | 25 to 97 | 96% | 87 | 76 | 2.5 |
| Solo 175 | Natural or Propane | 50 to 170 | 96% | 154 | 134 | 4.6 |
| Solo 250 | Natural or Propane | 65 to 245 | 96% | 223 | 194 | 4.1 |
| Solo 399 | Natural or Propane | 112 to 399 | 95.1 %* | 379 | 330 | 7 |

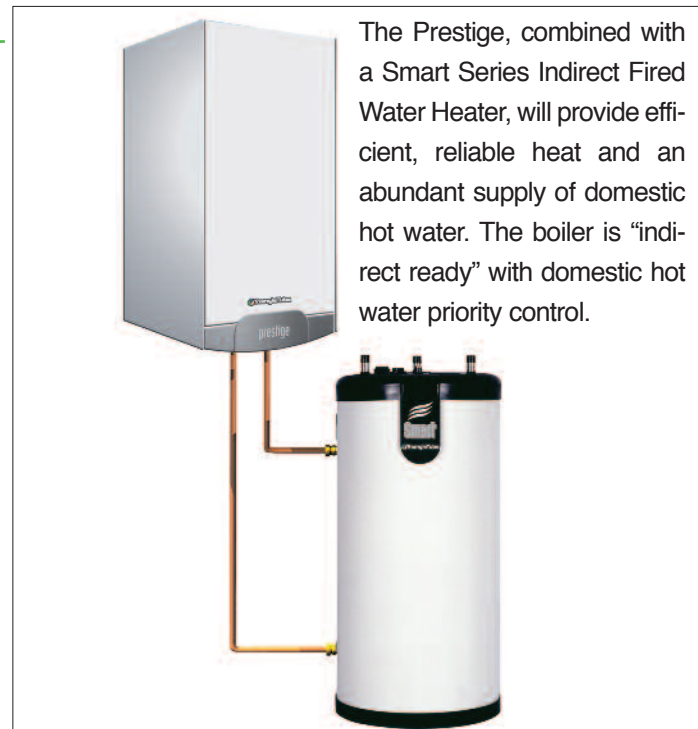
Connections / Dimensions / Data

*Thermal Efficiency

| Model | Supply / Return Connections | Gas Connection | Vent/Air Diameter | Dimensions D x W x H | Weight Lbs |
|----------|-----------------------------|----------------|-------------------|----------------------------|------------|
| Solo 60 | 1" | 1/2" | 3" | 16"x 20" x 35 1/2" | 95 |
| Solo 110 | 1" | 1/2" | 3" | 16"x 20" x 35 1/2" | 106 |
| Solo 175 | 1 1/4" | 3/4" | 3" | 16"x 20" x 35 1/2" | 131 |
| Solo 250 | 1 1/4" | 3/4" | 3" | 16"x 20" x 35 1/2" | 142 |
| Solo 399 | 1 1/2" | 1" | 4" | 20 3/4"x 24 3/4" x 37 1/2" | 200 |

Standard Features

- Factory tested
- Limited 10 year warranty
- Stainless steel heat exchanger
- Outdoor temperature sensor
- Stainless steel burner
- Negative pressure regulated gas valve
- 30 psi pressure relief valve
- Flanged Grundfos 3-speed UPS15-58 system circulator (110 only)
- Automatic air vent
- Pressure gauge
- Condensate drain assembly
- 24 V terminal strip with removable jumpers for manual reset or automatic reset of external controls
- NTC temperature sensors on the boiler supply/return and flue
- 120V Power switch



The Prestige, combined with a Smart Series Indirect Fired Water Heater, will provide efficient, reliable heat and an abundant supply of domestic hot water. The boiler is "indirect ready" with domestic hot water priority control.

Optional Equipment

- Floor Stand • Wall Kit (399) • Condensate Neutralizer Kit
- Concentric Vent Kit • Direct Vent Sidewall Kit
- 5 and 10 Year Parts and Labor Plans

Triangle Tube reserves the right to make product changes or improvements at any time without notice.



1 Triangle Lane Blackwood, NJ 08012

Tel: (856) 228 8881- Fax: (856) 228 3584

E-mail: info@triangletube.com - <http://www.triangletube.com>

